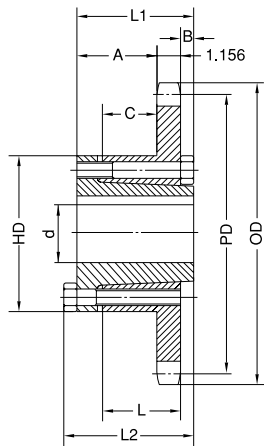
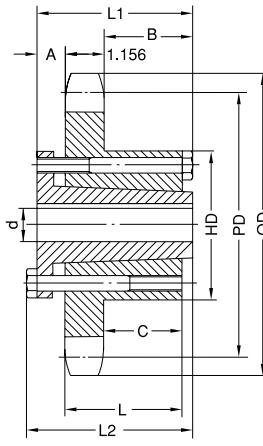


Q-BUSHED SPROCKETS No. 160

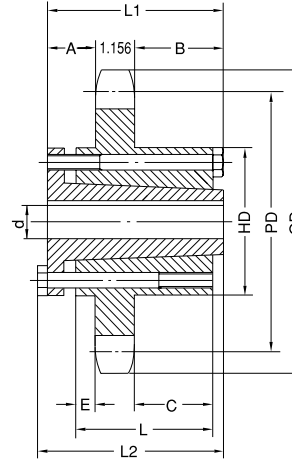
2" Pitch



Type B1



Type C



Type C1

Single Q-Bushed

No. of Teeth	Part No.	Type	Bushing	OD	PD	Max. Bore d	L1	L2	HD	A	B	C	E	L	App. Wt. (Lbs.)	
															With Hub	Sprocket
12	160E12H	B ₁	E	8.660	7.727	3-1/2	2-5/8	2-15/16	6	1-5/16	1/8	15/32		1-5/8	21.0	11.0
13	160E13H	B ₁	E	9.310	8.357	3-1/2	2-5/8	2-15/16	6	1-5/16	1/8	15/32		1-5/8	24.0	14.0
14	160E14H	B ₁	E	9.960	8.988	3-1/2	2-5/8	2-15/16	6	1-5/16	1/8	15/32		1-5/8	26.0	16.0
15	160F15H	B ₁	F	10.610	9.620	3-15/16	3-5/8	4	6-5/8	2-5/16	1/8	1-11/32		2-1/2	35.5	24.0
16	160F16H	B ₁	F	11.260	10.252	3-15/16	3-5/8	4	6-5/8	2-5/16	1/8	1-11/32		2-1/2	38.5	27.0
17	160F17H	B ₁	F	11.900	10.885	3-15/16	3-5/8	4	6-5/8	2-5/16	1/8	1-11/32		2-1/2	42.5	31.0
18	160F18H	B ₁	F	12.540	11.518	3-15/16	3-5/8	4	6-5/8	2-5/16	1/8	1-11/32		2-1/2	46.5	35.0
19	160F19H	B ₁	F	13.190	12.151	3-15/16	3-5/8	4	6-5/8	2-5/16	1/8	1-11/32		2-1/2	49.5	38.0
20	160F20H	B ₁	F	13.830	12.785	3-15/16	3-5/8	4	6-5/8	2-5/16	1/8	1-11/32		2-1/2	53.5	42.0
21	160F21	B ₁	F	14.740	13.419	3-15/16	3-5/8	4	6-5/8	2-5/16	1/8	1-11/32		2-1/2	56.5	45.0
22	160F22	B ₁	F	15.110	14.053	3-15/16	3-5/8	4	6-5/8	2-5/16	1/8	1-11/32		2-1/2	62.5	51.0
23	160F23	B ₁	F	15.750	14.688	3-15/16	3-5/8	4	6-5/8	2-5/16	1/8	1-11/32		2-1/2	66.5	55.0
24	160F24	B ₁	F	16.390	15.323	3-15/16	3-5/8	4	6-5/8	2-5/16	1/8	1-11/32		2-1/2	70.5	59.0
25	160F25	B ₁	F	17.030	15.958	3-15/16	3-5/8	4	6-5/8	2-5/16	1/8	1-11/32		2-1/2	75.5	64.0
26	160J26	C	J	17.670	16.593	4-7/16	4-1/2	5	7-1/4	1-3/16	2-1/8	2-1/32		3-3/16	92.5	74.0
28	160J28	C	J	18.950	17.863	4-7/16	4-1/2	5	7-1/4	1-3/16	2-1/8	2-1/32		3-3/16	103.0	84.0
30	160J30	C	J	20.230	19.134	4-7/16	4-1/2	5	7-1/4	1-3/16	2-1/8	2-1/32		3-3/16	115.0	96.0
35	160J35	C	J	23.420	22.312	4-7/16	4-1/2	5	7-1/4	1-3/16	2-1/8	2-1/32		3-3/16	135.0	116.0
40	160M40	C ₁	M	26.610	25.491	5-1/2	6-3/4	7-1/4	9	2-11/16	2-11/16	2-13/32	1-19/32	5-3/16	211.0	174.0
45	160M45	C ₁	M	29.800	28.671	5-1/2	6-3/4	7-1/4	9	2-11/16	2-11/16	2-13/32	1-19/32	5-3/16	245.0	208.0
54	160M54	C ₁	M	35.540	34.397	5-1/2	6-3/4	7-1/4	9	2-11/16	2-11/16	2-13/32	1-19/32	5-3/16	299.0	262.0
60	160M60	C ₁	M	39.360	38.215	5-1/2	6-3/4	7-1/4	9	2-11/16	2-11/16	2-13/32	1-19/32	5-3/16	347.0	310.0
70	160M70	C ₁	M	45.730	44.578	5-1/2	6-3/4	7-1/4	9	2-11/16	2-11/16	2-13/32	1-19/32	5-3/16	468.0	431.0
80	160M80	C ₁	M	52.100	50.943	5-1/2	6-3/4	7-1/4	9	2-11/16	2-11/16	2-13/32	1-19/32	5-3/16	567.0	530.0

H - Denotes hardened teeth.

For 160 Double, please refer to page 89.