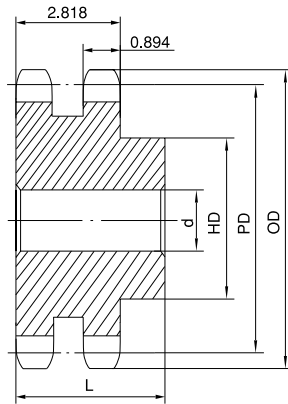
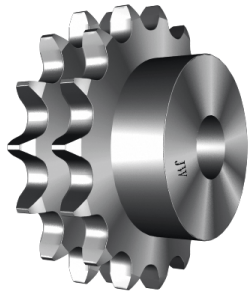
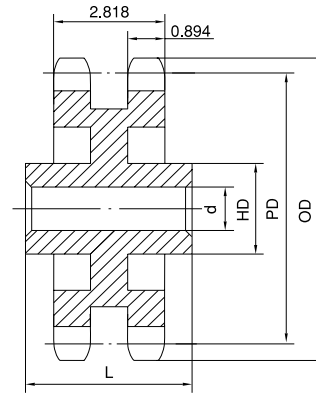


No. 140 STOCK SPROCKETS

1-3/4" Pitch



Type B



Type C

Double Type B & C

No. of Teeth	Part No.	OD	PD	Type	d		HD	L	App. Wt. (Lbs.)
					Min.	Max.			
13	D140B13H	8.150	7.313	B	1-5/8	3-5/16	5	3-3/4	29.0
14	D140B14H	8.720	7.865	B	1-5/8	3-3/4	5-1/2	3-3/4	34.8
15	D140B15H	9.280	8.418	B	1-5/8	4-1/2	6-1/2	3-3/4	42.5
16	D140B16H	9.850	8.971	B	1-5/8	5-1/4	7	4	48.1
17	D140B17H	10.410	9.524	B	1-5/8	5-1/4	7	4	57.5
18	D140B18H	10.980	10.078	B	1-3/4	5-1/4	7	4	65.6
19	D140B19H	11.540	10.633	B	1-3/4	5-1/4	7	4	72.0
20	D140B20H	12.100	11.186	B	1-3/4	5-1/4	7	4	76.0
21	D140B21H	12.660	11.743	B	1-3/4	5-1/4	7	4	82.0
22	D140B22	13.220	12.297	B	1-3/4	5-1/4	7	4	94.0
23	D140B23	13.780	12.852	B	1-3/4	5-1/4	7	4	100.0
24	D140B24	14.340	13.407	B	1-3/4	5-1/4	7	4	104.0
25	D140B25	14.900	13.963	B	1-3/4	5-1/4	7	4	120.0
26	D140B26	15.460	14.518	B	1-3/4	5-1/4	7	4	128.0
35	D140C35	20.490	19.523	C	1-1/2	5-3/8	7-1/2	6	180.0
45	D140C45	26.080	25.088	C	1-1/2	5-3/8	7-1/2	6	232.0
60	D140C60	34.440	33.437	C	1-1/2	6-3/8	9-1/2	6-1/4	372.0

H - Denotes hardened teeth.

Maximum bores shown, accommodate standard keyway with setscrew positioned over keyway.