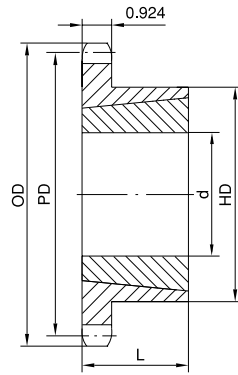
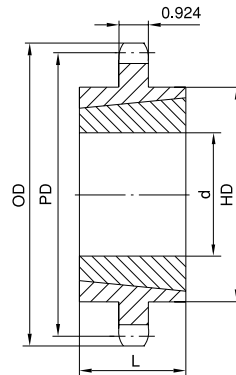


# No. 120 TAPER-BUSHED SPROCKETS

## 1-1/2" Pitch



Type B



Type C

### Single Taper-Bushed

No. of Teeth	Type	Part No.	Bushing	OD	PD	Max. Bore d	HD	L	App. Wt. (Lbs.)	
									Sprocket	Bushing
12	B	120BTB12H	2012	6.498	5.796	2	3-9/16	1-1/4	5.5	1.7
13	B	120BTB13H	2517	6.896	6.268	2-1/2	4-1/4	1-3/4	6.0	3.5
14	B	120BTB14H	2517	7.472	6.741	2-1/2	4-1/4	1-3/4	7.0	3.5
15	B	120BTB15H	2517	7.957	7.215	2-1/2	4-1/4	1-3/4	8.0	3.5
16	B	120BTB16H	3020	8.441	7.689	3	5-1/4	2	10.0	6.5
17	B	120BTB17H	3020	8.924	8.163	3	5-1/4	2	11.0	6.5
18	B	120BTB18H	3020	9.407	8.638	3	5-1/4	2	12.0	6.5
19	B	120BTB19H	3020	9.889	9.113	3	5-1/4	2	14.0	6.5
20	B	120BTB20H	3020	10.371	9.588	3	5-1/4	2	15.5	6.5
21	B	120BTB21H	3020	10.851	10.064	3	5-1/4	2	17.5	6.5
24	B	120BTB24H	3020	12.294	11.492	3	5-1/4	2	23.5	6.5
26	B	120BTB26H	3020	13.254	12.444	3	5-1/4	2	28.5	6.5
30	B	120BTB30	3020	15.171	14.351	3	5-1/4	2	33.5	6.5
35	C	120CTB35	3020	17.566	16.734	3	5-1/4	2	52.0	6.5
45	C	120CTB45	3030	22.351	21.503	3	5-7/8	3	82.0	9.2
60	C	120CTB60	3535	29.522	28.661	3-1/2	6-1/2	3-1/2	140.0	14.0
70	C	120CTB70	3535	34.301	33.434	3-1/2	6-1/2	3-1/2	175.0	14.0
80	C	120CTB80	3535	39.078	38.207	3-1/2	6-1/2	3-1/2	220.0	14.0

H - Denotes hardened teeth.