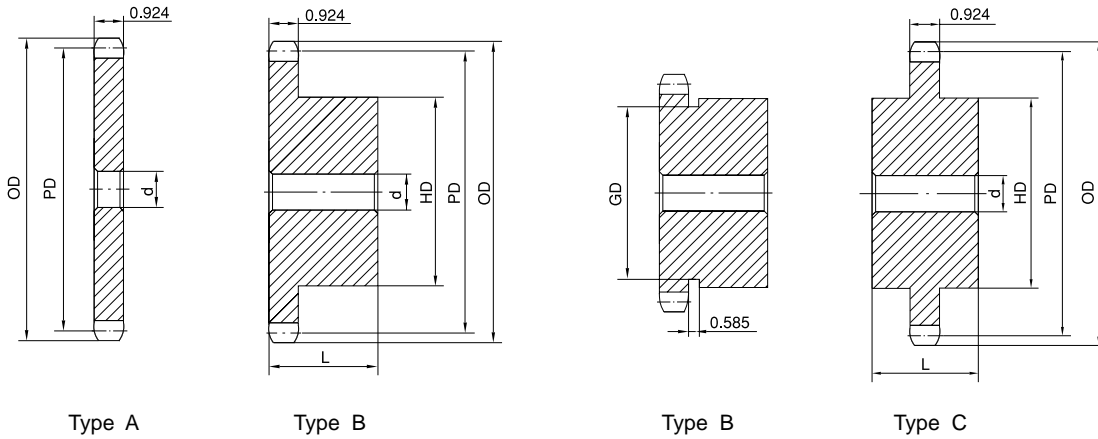


STOCK SPROCKETS No. 120

1-1/2" Pitch



Single Type A, B & C

No. of Teeth	OD	PD	Type A			Type B					Type C							
			Part No.	d	App. Wt. (Lbs.)	Part No.	d		HD	L	App. Wt. (Lbs.)	Part No.	d		HD	L	App. Wt. (Lbs.)	
							Min.	Max.					Min.	Max.				
8	4.520	3.920	120A8H	1-1/4	2.4													
9	5.020	4.386	120A9H	1-1/4	3.0	120B9H	1-3/8	1-13/16	3-3/8*	2-1/4	5.3							
10	5.520	4.854	120A10H	1-1/4	3.8	120B10H	1-3/8	2-1/4	3-3/4*	2-1/4	7.1							
11	6.010	5.325	120A11H	1-1/4	4.8	120B11H	1-3/8	2-3/8	3-9/16	2-1/8	7.6	120C11	1-3/8	2-3/8	3-9/16	3-3/8	12.5	
12	6.500	5.796	120A12H	1-1/4	5.8	120B12H	1-3/8	2-3/4	4-1/8	2-1/8	9.9	120C12	1-3/8	2-3/4	4-13/16	3-3/8	14.8	
13	6.990	6.269	120A13H	1-1/4	6.7	120B13H	1-3/8	3	4-9/16	2-1/4	12.4	120C13	1-3/8	3	4-5/8	3-3/8	17.2	
14	7.470	6.741	120A14H	1-1/4	8.0	120B14H	1-3/8	3-1/4	4-3/4	2-1/4	14.4	120C14	1-3/8	3-1/4	4-3/4	3-3/8	19.5	
15	7.960	7.215	120A15H	1-1/4	9.1	120B15H	1-1/4	3-1/4	4-3/4	2-3/8	16.7							
16	8.440	7.689	120A16H	1-1/4	10.6	120B16H	1-1/4	3-1/2	5-1/4	2-3/8	19.9							
17	8.920	8.163	120A17H	1-1/4	12.6	120B17H	1-1/4	3-1/2	5-1/4	2-3/8	20.8							
18	9.410	8.639	120A18H	1-1/4	13.6	120B18H	1-1/4	3-1/2	5-1/4	2-3/8	22.2							
19	9.890	9.114	120A19H	1-1/4	15.1	120B19H	1-1/4	3-1/2	5-1/4	2-3/8	24.8							
20	10.370	9.588	120A20H	1-1/4	16.9	120B20H	1-1/4	3-1/2	5-1/4	2-3/8	25.8							
21	10.850	10.065	120A21H	1-1/4	18.7	120B21H	1-1/4	3-1/2	5-1/4	2-3/8	26.7							
22	11.330	10.541	120A22H	1-1/4	20.0	120B22H	1-1/4	3-1/2	5-1/4	2-3/8	28.2							
23	11.810	11.016	120A23H	1-1/4	22.1	120B23H	1-1/4	3-1/2	5-1/4	2-3/8	30.3							
24	12.290	11.492	120A24H	1-1/4	24.8	120B24H	1-1/4	3-1/2	5-1/4	2-3/8	32.1							
25	12.770	11.969	120A25H	1-1/4	26.8	120B25H	1-1/4	3-1/2	5-1/4	2-3/8	34.6							
26	13.250	12.444	120A26H	1-1/2	28.3	120B26H	1-1/2	4	6	2-1/2	40.0							
27	13.730	12.921	120A27	1-1/2	30.9	120B27	1-1/2	4	6	2-1/2	42.2							
28	14.210	13.397	120A28	1-1/2	33.6	120B28	1-1/2	4	6	2-1/2	44.9							
30	15.170	14.351	120A30	1-1/2	39.0	120B30	1-1/2	4	6	2-1/2	50.2							
32	16.130	15.303	120A32	1-1/2	43.9	120B32	1-1/2	4	6	2-1/2	56.0							
33	16.610	15.780	120A33	1-1/2	48.2	120B33	1-1/2	4	6	2-1/2	58.0							
34	17.090	16.257	120A34	1-1/2	50.0	120B34	1-1/2	4	6	2-1/2	60.2							
35	17.570	16.734	120A35	1-1/2	52.0	120B35	1-1/2	4	6	2-1/2	62.4							
36	18.050	17.211	120A36	1-1/2	56.0	120B36	1-1/2	4	6	2-1/2	66.4							
40	19.960	19.119	120A40	1-1/2	71.0							120C40	1-1/2	4	6	3-3/4	92.0	
42	20.920	20.073	120A42	1-1/2	75.0							120C42	1-1/2	4	6	3-3/4	98.0	
45	22.350	21.504	120A45	1-1/2	88.0							120C45	1-1/2	4	6	3-3/4	99.2	
48	23.790	22.935	120A48	1-1/2	103.0							120C48	1-1/2	4	6	4	113.0	
54	26.650	25.797	120A54	1-1/2	140.0							120C54	1-1/2	4	6	4	133.0	
60	29.520	28.661	120A60	1-1/2	160.0							120C60	1-1/2	5-1/4	7	4	160.0	
70	34.300	33.434	120A70	1-1/2	216.0							120C70	1-1/2	5-3/8	7-1/2	4-1/2	206.0	
80	39.080	38.207	120A80	1-1/2	284.0							120C80	1-1/2	5-3/8	7-1/2	4-1/2	254.0	
90	43.850	42.981	120A90	1-1/2	358.0													

H - Denotes hardened teeth.

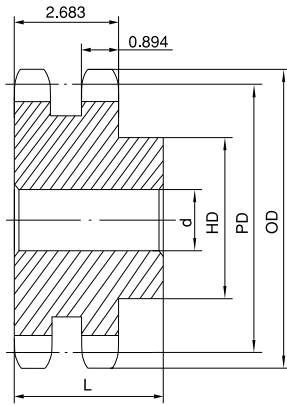
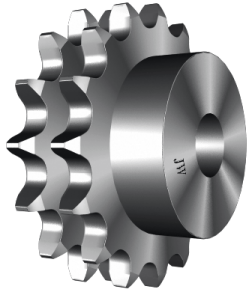
Maximum bores shown, accommodate standard keyway with setscrew positioned over keyway.

* Hub has recessed groove allowing for chain clearance. GD are as follows:

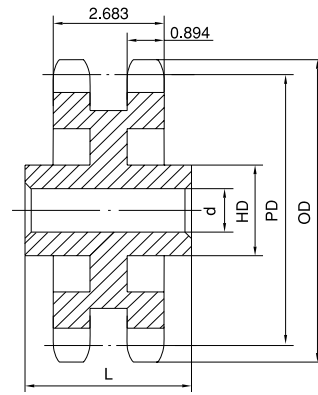
9 Teeth = 2.691in 10 Teeth = 3.104in

No. 120 STOCK SPROCKETS

1-1/2" Pitch



Type B



Type C

Double Type B & C

No. of Teeth	Part No.	OD	PD	Type	d		HD	L	App. Wt. (Lbs.)
					Min.	Max.			
11	D120B11H	6.010	5.325	B	1-1/2	2-3/8	3-9/16	3-3/4	13.6
12	D120B12H	6.500	5.796	B	1-1/2	2-3/4	4-1/16	3-3/4	17.3
13	D120B13H	6.990	6.269	B	1-1/2	3	4-1/2	3-3/4	21.1
14	D120B14H	7.470	6.741	B	1-1/2	3-5/16	5	3-3/4	25.6
15	D120B15H	7.960	7.215	B	1-1/2	3-1/2	5-1/4	3-3/4	29.9
16	D120B16H	8.440	7.689	B	1-1/2	3-1/2	5-1/4	3-3/4	33.8
17	D120B17H	8.920	8.163	B	1-1/2	3-1/2	5-1/4	3-3/4	36.9
18	D120B18H	9.410	8.639	B	1-1/2	3-1/2	5-1/4	3-3/4	41.9
19	D120B19H	9.890	9.114	B	1-1/2	3-1/2	5-1/4	3-3/4	46.5
20	D120B20H	10.370	9.588	B	1-1/2	3-1/2	5-1/2	3-3/4	50.2
21	D120B21H	10.850	10.065	B	1-1/2	3-1/2	5-1/2	3-3/4	55.6
22	D120B22	11.330	10.541	B	1-1/2	3-13/16	5-3/4	4	64.0
23	D120B23	11.810	11.016	B	1-1/2	4-1/2	6-1/2	4	75.0
24	D120B24	12.290	11.492	B	1-1/2	4-1/2	6-1/2	4	79.0
25	D120B25	12.770	11.969	B	1-1/2	4-1/2	6-1/2	4	84.0
26	D120B26	13.250	12.444	B	1-1/2	4-1/2	6-1/2	4	90.0
30	D120B30	15.170	14.351	B	1-1/2	4-1/2	6-1/2	4	119.0
35	D120C35	17.570	16.734	C	1-1/2	5-3/8	7-1/2	6	148.0
45	D120C45	22.350	21.504	C	1-1/2	5-3/8	7-1/2	6	188.0
60	D120C60	29.520	28.661	C	1-1/2	6-3/8	9-1/2	6-1/4	307.0

H - Denotes hardened teeth.

Maximum bores shown, accommodate standard keyway with setscrew positioned over keyway.