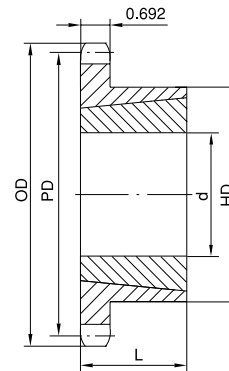
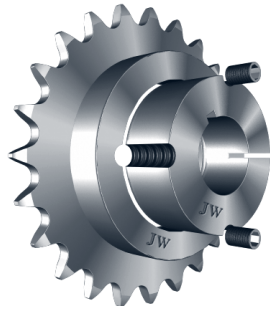


TAPER-BUSHED SPROCKETS **No. 100**

1-1/4" Pitch



Type B

Single Taper-Bushed

No. of Teeth	Part No.	Bushing	OD	PD	Max. Bore d	HD	L	App. Wt. (Lbs.)	
								Sprocket	Bushing
11	100BTB11H	1615	5.007	4.437	1-5/8	3	1-1/2	2.7	1.2
12	100BTB12H	1615	5.415	4.830	1-5/8	3-1/4	1-1/2	3.5	1.2
13	100BTB13H	2012	5.821	5.223	2	3-9/16	1-1/4	3.6	1.7
14	100BTB14H	2012	6.227	5.617	2	3-9/16	1-1/4	3.9	1.7
15	100BTB15H	2517	6.631	6.012	2-1/2	4-1/4	1-3/4	5.0	3.5
16	100BTB16H	2517	7.034	6.407	2-1/2	4-1/2	1-3/4	6.4	3.5
17	100BTB17H	2517	7.437	6.803	2-1/2	4-1/2	1-3/4	7.1	3.5
18	100BTB18H	2517	7.839	7.198	2-1/2	4-1/2	1-3/4	7.8	3.5
19	100BTB19H	2517	8.241	7.594	2-1/2	4-1/2	1-3/4	8.7	3.5
20	100BTB20H	2517	8.642	7.991	2-1/2	4-1/2	1-3/4	9.6	3.5
21	100BTB21H	2517	9.043	8.387	2-1/2	4-1/2	1-3/4	10.6	3.5
22	100BTB22H	2517	9.444	8.783	2-1/2	4-1/2	1-3/4	11.0	3.5
24	100BTB24H	2517	10.245	9.577	2-1/2	4-1/2	1-3/4	13.0	3.5
26	100BTB26H	2517	11.045	10.370	2-1/2	4-1/2	1-3/4	15.0	3.5
28	100BTB28H	3020	11.844	11.164	3	5-1/4	2	16.5	6.5
30	100BTB30H	3020	12.643	11.958	3	5-1/4	2	22.0	6.5
32	100BTB32H	3020	13.442	12.753	3	5-1/4	2	23.0	6.5
35	100BTB35	3020	14.639	13.945	3	5-1/4	2	28.0	6.5
36	100BTB36	3020	15.038	14.342	3	5-1/4	2	31.0	6.5
40	100BTB40	3020	16.633	15.932	3	5-1/4	2	37.0	6.5
45	100BTB45	3020	18.626	17.919	3	5-1/4	2	46.0	6.5
48	100BTB48	3020	19.821	19.112	3	5-1/4	2	53.0	6.5
54	100BTB54	3020	22.212	21.498	3	5-1/4	2	62.0	6.5
60	100BTB60	3020	24.601	23.884	3	5-1/4	2	72.0	6.5

H - Denotes hardened teeth.