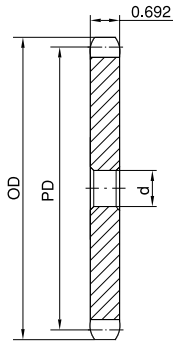
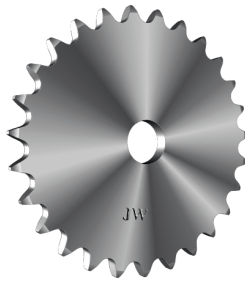
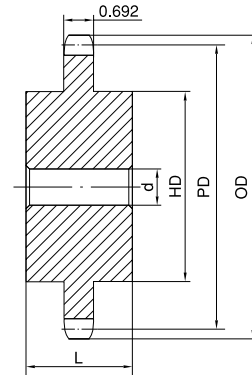


No. 100 STOCK SPROCKETS

1-1/4" Pitch



Type A



Type C

Single Type A

No. of Teeth	Part No.	OD	PD	d	App. Wt. (Lbs.)	No. of Teeth	Part No.	OD	PD	d	App. Wt. (Lbs.)
7	100A7H	3.350	2.881	1	1.2	38	100A38	15.840	15.138	1-1/4	33.0
8	100A8H	3.770	3.266	1	1.4	39	100A39	16.230	15.535	1-1/4	35.0
9	100A9H	4.180	3.655	1	1.6	40	100A40	16.630	15.933	1-1/4	37.0
10	100A10H	4.600	4.045	1	2.0	41	100A41	17.030	16.330	1-1/4	39.0
11	100A11H	5.010	4.438	1-1/4	2.5	42	100A42	17.430	16.728	1-1/4	40.0
12	100A12H	5.420	4.830	1-1/4	3.0	43	100A43	17.830	17.125	1-1/2	43.0
13	100A13H	5.820	5.224	1-1/4	3.5	44	100A44	18.230	17.523	1-1/2	45.0
14	100A14H	6.230	5.618	1-1/4	4.1	45	100A45	18.630	17.920	1-1/2	47.0
15	100A15H	6.630	6.013	1-1/4	4.7	46	100A46	19.020	18.318	1-1/2	49.0
16	100A16H	7.030	6.408	1-1/4	5.4	47	100A47	19.420	18.715	1-1/2	52.0
17	100A17H	7.440	6.803	1-1/4	6.1	48	100A48	19.820	19.113	1-1/2	54.0
18	100A18H	7.840	7.199	1-1/4	7.0	49	100A49	20.220	19.510	1-1/2	56.0
19	100A19H	8.240	7.595	1-1/4	7.8	50	100A50	20.620	19.908	1-1/2	57.0
20	100A20H	8.640	7.990	1-1/4	8.8	51	100A51	21.020	20.305	1-1/2	63.0
21	100A21H	9.040	8.388	1-1/4	9.8	52	100A52	21.420	20.703	1-1/2	64.0
22	100A22H	9.440	8.784	1-1/4	10.5	53	100A53	21.810	21.100	1-1/2	66.0
23	100A23H	9.840	9.180	1-1/4	11.8	54	100A54	22.210	21.498	1-1/2	68.0
24	100A24H	10.250	9.576	1-1/4	12.8	55	100A55	22.610	21.895	1-1/2	70.0
25	100A25H	10.650	9.974	1-1/4	13.9	56	100A56	23.010	22.294	1-1/2	72.0
26	100A26H	11.050	10.370	1-1/4	15.0	57	100A57	23.410	22.691	1-1/2	74.8
27	100A27H	11.440	10.768	1-1/4	16.0	58	100A58	23.810	23.089	1-1/2	76.0
28	100A28H	11.840	11.164	1-1/4	17.4	59	100A59	24.200	23.486	1-1/2	78.0
29	100A29H	12.240	11.561	1-1/4	19.6	60	100A60	24.600	23.884	1-1/2	80.0
30	100A30H	12.640	11.959	1-1/4	20.1	70	100A70	28.580	27.861	1-1/2	113.0
31	100A31H	13.040	12.355	1-1/4	21.5	72	100A72	29.380	28.658	1-1/2	119.0
32	100A32H	13.440	12.753	1-1/4	22.6	76	100A76	30.970	30.248	1-1/2	133.0
33	100A33	13.840	13.150	1-1/4	24.1	80	100A80	32.570	31.839	1-1/2	146.0
34	100A34	14.240	13.548	1-1/4	26.0	84	100A84	34.160	33.430	1-1/2	162.0
35	100A35	14.640	13.945	1-1/4	27.2	90	100A90	36.550	35.818	1-1/2	193.0
36	100A36	15.040	14.343	1-1/4	30.0	96	100A96	38.930	38.204	1-1/2	215.0
37	100A37	15.440	14.740	1-1/4	31.0						

Single Type C

No. of Teeth	Part No.	OD	PD	d		HD	L	App. Wt. (Lbs.)	No. of Teeth	Part No.	OD	PD	d		HD	L	App. Wt. (Lbs.)
				Min.	Max.								Min.	Max.			
10	100C10	4.600	4.045	1	1-7/8	3-9/32*	2-7/8	6.1	54	100C54	22.210	21.498	1-1/2	4	6	3-1/4	78.0
11	100C11	5.010	4.438	1	2-1/4	3-9/16*	2-7/8	7.1	60	100C60	24.600	23.884	1-1/2	4	6	3-1/4	89.0
12	100C12	5.420	4.830	1	2-1/4	4*	2-7/8	8.3	70	100C70	28.580	27.861	1-1/2	5-1/4	7	3-3/4	125.0
13	100C13	5.820	5.224	1	2-3/8	3-57/64	2-7/8	10.0	72	100C72	29.380	28.658	1-1/2	5-1/4	7	3-3/4	134.0
14	100C14	6.230	5.618	1-1/4	2-3/4	4-3/16	2-7/8	12.1	76	100C76	30.970	30.248	1-1/2	5-1/4	7	3-3/4	143.0
									80	100C80	32.570	31.839	1-1/2	5-1/4	7	3-3/4	151.0
									84	100C84	34.160	33.430	1-1/2	5-1/4	7	3-3/4	170.0
									90	100C90	36.550	35.818	1-1/2	5-1/4	7	3-3/4	184.0
									96	100C96	38.930	38.204	1-1/2	5-1/4	7	4-1/2	203.0

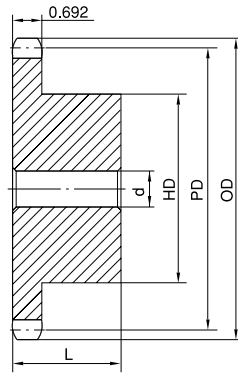
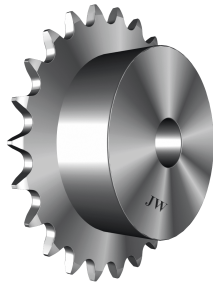
H - Denotes hardened teeth.

Maximum bores shown, accommodate standard keyway with setscrew positioned over keyway.

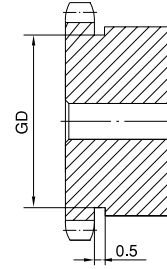
* Hub has recessed groove allowing for chain clearance. Groove depth is the same as Single Type B; see page 31.

STOCK SPROCKETS **No. 100**

1-1/4" Pitch



Type B



Type B

Single Type B

No. of Teeth	Part No.	OD	PD	d		HD	L	App. Wt. (Lbs.)	No. of Teeth	Part No.	OD	PD	d		HD	L	App. Wt. (Lbs.)
				Min.	Max.								Min.	Max.			
8	100B8H	3.770	3.266	1	1-1/4	2-7/16*	1-7/8	2.3	29	100B29H	12.240	11.561	1-1/4	3-5/16	5	2	25.0
9	100B9H	4.180	3.655	1	1-5/8	2-13/16*	1-7/8	3.2	30	100B30H	12.640	11.959	1-1/4	3-5/16	5	2	26.9
10	100B10H	4.600	4.045	1	1-7/8	3-1/4*	1-7/8	4.1	31	100B31H	13.040	12.355	1-1/4	3-5/16	5	2	28.2
11	100B11H	5.010	4.438	1	2-1/4	3-9/16*	1-7/8	5.3	32	100B32H	13.440	12.753	1-1/4	3-5/16	5	2	29.8
12	100B12H	5.420	4.830	1	2-1/4	4*	1-7/8	6.4	33	100B33	13.840	13.150	1-1/4	3-5/16	5	2	32.1
13	100B13H	5.820	5.224	1	2-3/8	3-7/8	1-5/8	6.6	34	100B34	14.240	13.548	1-1/4	3-5/16	5	2-1/2	34.5
14	100B14H	6.230	5.618	1-1/4	2-3/4	4-3/16	1-5/8	7.4	35	100B35	14.640	13.945	1-1/4	3-5/16	5	2-1/2	36.9
15	100B15H	6.630	6.013	1-1/4	3	4-1/2	1-3/4	9.2	36	100B36	15.040	14.343	1-1/4	3-5/16	5	2-1/2	38.6
16	100B16H	7.030	6.408	1-5/16	3	4-1/2	1-3/4	9.9	37	100B37	15.440	14.740	1-1/4	3-5/16	5	2-1/2	40.0
17	100B17H	7.440	6.803	1-5/16	3	4-1/2	1-3/4	10.8	38	100B38	15.840	15.138	1-1/4	3-5/16	5	2-1/2	41.5
18	100B18H	7.840	7.199	1-5/16	3	4-1/2	1-3/4	11.5	39	100B39	16.230	15.535	1-1/4	3-5/16	5	2-1/2	43.6
19	100B19H	8.240	7.595	1-5/16	3	4-1/2	2	13.1	40	100B40	16.630	15.933	1-1/4	3-5/16	5	2-1/2	46.9
20	100B20H	8.640	7.990	1-5/16	3	4-1/2	2	14.2	42	100B42	17.430	16.728	1-1/4	3-5/16	5	2-1/2	50.4
21	100B21H	9.040	8.388	1-5/16	3	4-1/2	2	15.3	45	100B45	18.630	17.920	1-1/2	3-5/16	5	2-1/2	54.0
22	100B22H	9.440	8.784	1-5/16	3	4-1/2	2	16.1	48	100B48	19.820	19.113	1-1/2	4	6	2-1/2	66.0
23	100B23H	9.840	9.180	1-1/4	3	4-1/2	2	17.2	54	100B54	22.210	21.498	1-1/2	4	6	2-1/2	76.0
24	100B24H	10.250	9.576	1-1/4	3	4-1/2	2	19.2	60	100B60	24.600	23.884	1-1/2	4	6	2-1/2	84.0
25	100B25H	10.650	9.974	1-1/4	3	4-1/2	2	19.5	70	100B70	28.580	27.862	1-1/2	4	6	2-1/2	115.0
26	100B26H	11.050	10.370	1-1/4	3-5/16	5	2	21.7									
27	100B27H	11.440	10.768	1-1/4	3-5/16	5	2	23.0									
28	100B28H	11.840	11.164	1-1/4	3-5/16	5	2	24.4									

H - Denotes hardened teeth.

Maximum bores shown, accommodate standard keyway with setscrew positioned over keyway.

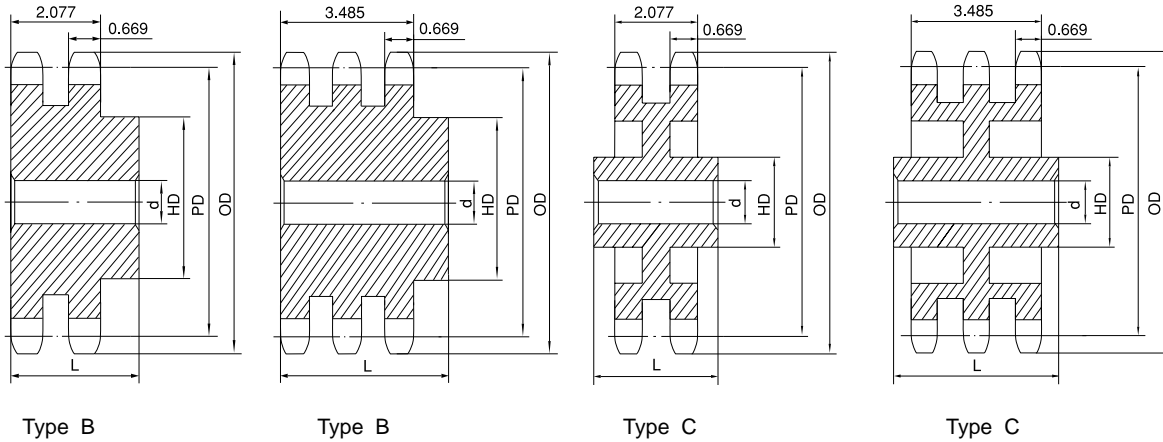
* Hub has recessed groove allowing for chain clearance. GD are as follows:

8 Teeth = 1.752in 9 Teeth = 2.169in 10 Teeth = 2.581in

11 Teeth = 2.991in 12 Teeth = 3.399in

No. 100 STOCK SPROCKETS

1-1/4" Pitch



Double Type B & C

Triple Type B & C

No. of Teeth	OD	PD	Double Type B & C							Triple Type B & C						
			Part No.	Type	d		HD	L	App. Wt. (Lbs.)	Part No.	Type	d		HD	L	App. Wt. (Lbs.)
					Min.	Max.						Min.	Max.			
10	4.600	4.045	D100B10H	B	1	1-7/8	2-3/4*	2-7/8	6.2							
11	5.010	4.438	D100B11H	B	1	2-1/8	3-1/8*	2-7/8	7.9	T100B11H	B	1	2-1/8	3-1/8	4-1/4	11.7
12	5.420	4.830	D100B12H	B	1-1/8	2-1/4	3-3/8*	2-7/8	9.3	T100B12H	B	1-1/8	2-1/4	3-3/8	4-1/4	13.7
13	5.820	5.224	D100B13H	B	1-1/8	2-1/2	3-13/16	2-7/8	11.4	T100B13H	B	1-1/8	2-1/2	3-13/16	4-1/4	16.9
14	6.230	5.618	D100B14H	B	1-1/8	2-3/4	4-3/16	2-7/8	13.6	T100B14H	B	1-1/8	2-3/4	4-3/16	4-1/4	20.2
15	6.630	6.013	D100B15H	B	1-1/4	3-1/8	4-5/8	3-1/8	17.1	T100B15H	B	1-1/4	3-1/8	4-5/8	4-1/2	25.0
16	7.030	6.408	D100B16H	B	1-1/4	3-5/16	5	3-1/8	20.1	T100B16H	B	1-1/4	3-5/16	5	4-1/2	29.3
17	7.440	6.803	D100B17H	B	1-1/4	3-1/2	5-1/4	3-1/8	23.1	T100B17H	B	1-1/4	3-1/2	5-1/4	4-1/2	33.8
18	7.840	7.199	D100B18H	B	1-1/4	3-1/2	5-1/4	3-1/8	25.4	T100B18H	B	1-1/4	3-1/2	5-1/4	4-3/4	38.6
19	8.240	7.595	D100B19H	B	1-1/4	3-3/4	5-1/2	3-3/8	29.6	T100B19H	B	1-1/4	3-3/4	5-1/2	4-3/4	43.3
20	8.640	7.990	D100B20H	B	1-1/4	3-3/4	5-1/2	3-3/8	32.4	T100B20H	B	1-1/4	3-3/4	5-1/2	4-3/4	47.9
21	9.040	8.388	D100B21H	B	1-1/4	3-3/4	5-1/2	3-3/8	35.3	T100B21H	B	1-1/4	3-3/4	5-1/2	4-3/4	52.3
22	9.440	8.784	D100B22	B	1-1/4	3-3/4	5-1/2	3-3/8	38.4	T100B22	B	1-1/4	3-3/4	5-1/2	4-3/4	57.5
23	9.840	9.180	D100B23	B	1-1/4	3-3/4	5-1/2	3-3/8	41.3	T100B23	B	1-1/4	3-3/4	5-1/2	4-3/4	62.5
24	10.250	9.576	D100B24	B	1-1/4	3-3/4	5-3/4	3-3/8	45.1	T100B24	B	1-1/4	3-3/4	5-3/4	4-3/4	69.0
25	10.650	9.974	D100B25	B	1-1/4	3-3/4	5-3/4	3-3/8	48.5	T100B25	B	1-1/4	3-3/4	5-3/4	4-3/4	73.0
26	11.050	10.370	D100B26	B	1-1/2	3-3/4	5-3/4	3-3/8	51.5	T100B26	B	1-1/2	3-13/16	5-3/4	4-3/4	79.0
30	12.640	11.959	D100B30	B	1-1/2	3-3/4	5-3/4	3-3/8	65.0	T100B30	B	1-1/2	3-13/16	5-3/4	4-3/4	103.0
35	14.640	13.945	D100C35	C	1-1/2	3-13/16	6	4-1/4	75.0	T100C35	C	1-1/2	4	6	5	108.0
45	18.630	17.920	D100C45	C	1-1/2	3-13/16	6	4-1/2	103.0	T100C45	C	1-1/2	4	6	5	143.0
60	24.600	23.884	D100C60	C	1-1/2	5-3/8	7-1/2	5	175.0	T100C60	C	1-1/2	5-3/8	7-1/2	5	217.0
70	28.580	27.861	D100C70	C	1-1/2	5-3/8	7-1/2	5	197.0	T100C70	C	1-1/2	5-3/8	7-1/2	5	262.0
80	32.570	31.839	D100C80	C	1-1/2	5-3/8	7-1/2	5	231.0	T100C80	C	1-1/2	5-3/8	7-1/2	5	313.0

H - Denotes hardened teeth.

Maximum bores shown, accommodate standard keyway with setscrew positioned over keyway.

* Hub has recessed groove allowing for chain clearance. Groove diameters are the same as Single Type B; see page 31.