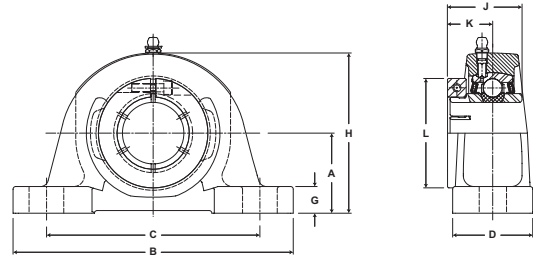


- Duty:** Medium
- Rolling Elements:** Ball
- Housing:** Cast Iron Pillow Block - High Base
- Self Alignment:** +/- 2 Degrees
- Lock:** SKWEZLOC Locking Collar
- Seal:** Felt
- Optional Seal:** Contact
- Temperature:** -20° to 220°F



## MP-T Series Medium Duty Pillow Blocks - SKWEZLOC Locking Collar

BORE DIAMETER	PART No.	BEARING INSERT No.	BASIC DYNAMIC RATING lb/N	DIMENSIONS inch / mm										BOLT SIZE	UNIT Wt. lb/kg
				A	B	C		D	G	H	J	K	L		
inch						MIN.	MAX.								
1	MP-16T	3-1T	4381 19487	1 3/4 44.5	6 1/4 158.8	4 3/16 106.4	5 3/16 131.8	2 50.8	5/8 15.9	3 7/16 87.3	1 9/16 39.7	15/16 23.8	2 1/16 52.4	1/2	4.2 1.91
1 3/16	MP-19T	3-13T	5782	1 7/8	6 7/8	4 1/2	5 1/2	2 1/4	11/16	3 13/16	1 3/4	1 1/16	2 7/16	1/2	5.7 2.59
1 1/4	MP-20T	2-14T	25718	47.6	174.6	114.3	139.7	57.2	17.5	96.8	44.5	27.0	61.9		
1 7/16	MP-23T	3-17T	7340 32648	2 1/8 54.0	8 203.2	5 127.0	6 3/8 161.9	2 1/4 57.2	3/4 19.1	4 3/16 106.4	2 50.8	1 1/4 31.8	2 11/16 68.3	1/2	7.1 3.22
1 1/2	MP-24T	3-18T	7901 35144	2 5/16 58.7	8 3/4 222.3	5 1/2 139.7	6 3/4 171.5	2 5/8 66.7	13/16 20.6	4 9/16 115.9	2 50.8	1 1/4 31.8	2 13/16 71.4	5/8	9.3 4.22
1 11/16	MP-27T	3-111T	7889	2 5/16	8 3/4	5 7/16	6 13/16	2 5/8	13/16	4 5/8	2 3/32	1 11/32	3 1/4	5/8	10.1 4.58
1 3/4	MP-28T	3-112T	35090	58.7	222.3	138.1	173.0	66.7	20.6	117.5	53.2	34.1	82.6		
1 15/16	MP-31T	3-115T	9752	2 1/2	9 1/2	5 15/16	7 9/16	2 7/8	7/8	5 3/32	2 1/4	1 3/8	3 1/2	5/8	12.3 5.58
2	MP-32T	2-2T	43377	63.5	241.3	150.8	192.1	73.0	22.2	129.4	57.2	34.9	88.9		
2 3/16	MP-35T	3-23T	11789	2 3/4	10 1/4	6 9/16	7 15/16	3 1/8	1 1/16	5 5/8	2 5/8	1 5/8	4 1/16	3/4	17.4 7.89
2 1/4	MP-36T	2-24T	52437	69.9	260.4	166.7	201.6	79.4	27.0	142.9	66.7	41.3	103.2		

For Medium Duty SKWEZLOC Locking Collar Bearing inserts see page G-96. For Replacement Lock Collar see page G-98. Sizes 2 7/16 and above come standard with Time Saving™ Axial Groove. See page G-22 for more information.