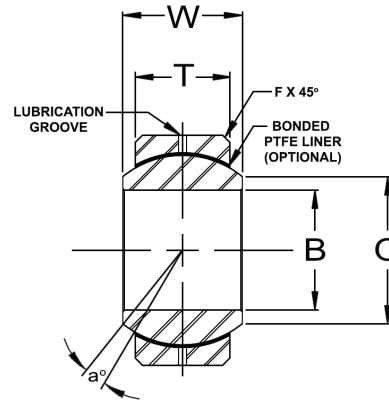
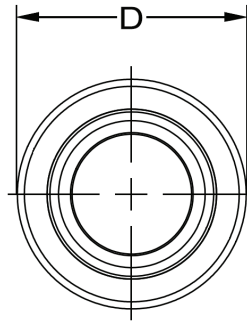


FKS / FKS-T

HEAVY DUTY PRECISION SERIES SPHERICAL BEARINGS, ALLOY STEEL / PTFE LINERS AVAILABLE



FKS / FKS-T
HEAVY DUTY PRECISION SERIES SPHERICAL BEARINGS, ALLOY STEEL

BEARING PART NO.	B DIA	D DIA	W WIDTH	T WIDTH	O DIA.	BALL DIA	F CHAMFER	a° MIS ANGLE	ULT. STATIC RADIAL LOAD (lbs.)	APPROX. WEIGHT (lbs.)
	+0.0015 -0.0005	+0.0000 -0.0005	+0.005 -0.005	+0.005 -0.005	REF.	REF.	REF.	REF.		
FKS3	.1900	.5625	.281	.218	.293	.406	.015	11	6,480	.014
FKS4	.2500	.6562	.343	.250	.364	.500	.022	13.5	10,000	.022
FKS5	.3125	.7500	.375	.281	.419	.562	.032	12	13,900	.065
FKS6	.3750	.8125	.406	.312	.516	.656	.032	10	18,000	.038
FKS7	.4375	.9062	.437	.343	.530	.687	.032	8	22,300	.047
FKS8	.5000	1.0000	.500	.390	.600	.781	.032	9.5	26,900	.065
FKS9	.5625	1.0937	.562	.437	.671	.875	.032	9.5	36,000	.086
FKS10	.6250	1.1875	.625	.500	.739	.968	.032	8.5	48,000	.110
FKS12	.7500	1.4375	.750	.593	.920	1.187	.044	9	78,000	.204
FKS14	.8750	1.5625	.875	.703	.980	1.312	.044	9.5	103,000	.263
FKS16	1.0000	1.7500	1.000	.797	1.118	1.500	.044	10	125,000	.386
FKS24	1.5000	2.7500	1.375	1.094	1.860	2.312	.032	8.5	208,495	1.36

NOTES:

LUBRICATION GROOVES IN I.D. & O.D OF RACE

FOR PTFE LINER, ADD "T" TO SUFFIX.

EXAMPLE: FKS10T

(UNITS WITH PTFE LINERS HAVE NO LUBRICATION HOLES OR GROOVES IN RACE.)

BALL
52100 STEEL HEAT TREATED HARD CHROME PLATED
RACE
ALLOY STEEL HEAT TREATED OIL COATED
LINER (OPTIONAL)
PTFE FABRIC