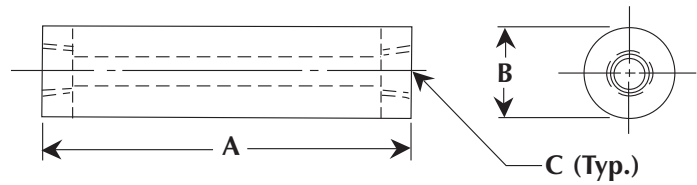


EXHAUST SILENCERS (MUFFLER)

Although the Fuji Ring Compressors are very quiet during operation, there are times when an additional exhaust silencer may be needed. These silencers allow quieter operation of the blowers in environments where noise levels are critical. The exhaust silencer reduces the noise level by approximately 5 dBA.



| EXHAUST SILENCERS (MUFFLERS) | | | | |
|------------------------------|----------------------------|--------------|--------------|--------------|
| Filter Model | For Use With Blower Model: | A Dim. (in.) | B Dim. (in.) | C Dim. (in.) |
| VFY-021A | VFC06-VFC20 | 12" | 2 1/2" | 1" FPT |
| VFY-023A | VFC30 | 12" | 2 1/2" | 1 1/4" FPT |
| VFY-024A | VFC40-VFC50 | 12" | 3" | 1 1/2" FPT |
| VFY-026A | VFC60-VFC70 | 15 3/4" | 3 1/2" | 2" FPT |
| VFY-028A | VFC80 | 21" | 4 1/2" | 2 1/2" FPT |
| VFY-029A | VFC90 | 26" | 5" | 3" FPT |