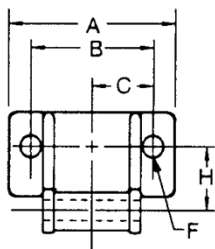


### Combination Chains

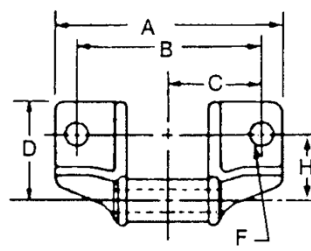
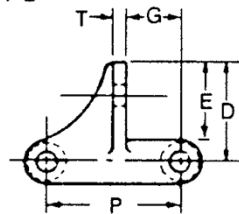
Dimensions: inch

PEER Chain No.	Pitch P	BlockLink		Pin Diam. D	Plate		Overall Width Cotted G	Average Tensile Strength Lbs.	Average Weight Per Foot Lbs.
		Inside Width Sprocket Contact R	Width Over Bearing S		Height H	Thickness T			
C55	1.631								
C77	2.308								
C102B	4.000								
C110	6.000								
C111	4.760								
C131	3.075								
C132	6.050								
C188	2.609								
BRH188	2.609								

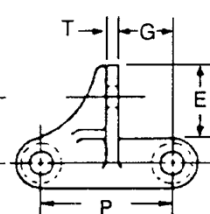
**Call PEER Chain for product specifications at (847) 775-4600.**



C 77 F-2  
C 188 F-2



C 131 F-2

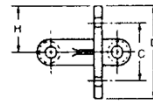
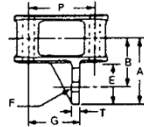


### F-2 Attachments

Dimensions: inch

PEER Chain No.	Pitch P	A	B	C	D	E	F	G	H	T
C77 F-2	2.308									
C131 F-2	3.075									
C188 F-2	2.609									

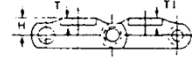
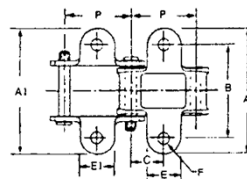
**Call PEER Chain for product specifications at (847) 775-4600.**



### G-19 Attachments

Dimensions: inch

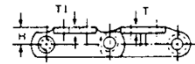
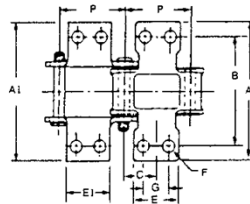
PEER Chain No.	Pitch P	A	B	C	D	E	F	G	H	T
C55 G-19	1.631	<b>Call PEER Chain for product specifications at (847) 775-4600.</b>								
C188 G-19	2.609									



### K-1 Attachments

Dimensions: inch

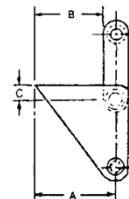
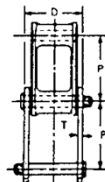
PEER Chain No.	Pitch P	A	A1	B	C	E	E1	F	H	T	T1
C55 K-1	1.631	<b>Call PEER Chain for product specifications at (847) 775-4600.</b>									
C77 K-1	2.308										
C188 K-1	2.609										



### K-2 Attachments

Dimensions: inch

PEER Chain No.	Pitch P	A	A1	B	C	E	E1	F	G	H	T	T1
C102BK-2	4.000	<b>Call PEER Chain for product specifications at (847) 775-4600.</b>										
C110K-2	6.000											
C111K-2	4.760											
C131K-2	3.075											
C132K-2	6.050											
C188K-2	2.609											



### S-1 Attachments

Dimensions: inch

PEER Chain No.	Pitch P	A	B	C	D	T
C111 S-1	4.760	<b>Call PEER Chain for product specifications at (847) 775-4600.</b>				
C132 S-1	6.050					
C188 S-1	2.609					