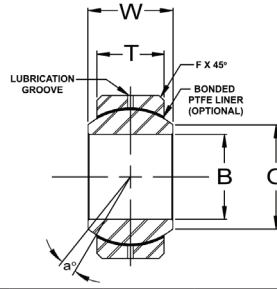
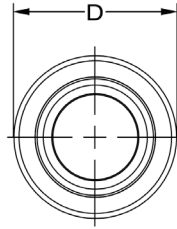


# AIN

HEAVY DUTY PRECISION SPHERICAL BEARINGS, ALLOY STEEL / PTFE LINERS AVAILABLE



<b>RACE</b>
ALLOY STEEL HEAT TREATED OIL COATED
<b>BALL</b>
52100 STEEL Rc 56 MIN. HARD HARD CHROME PLATED

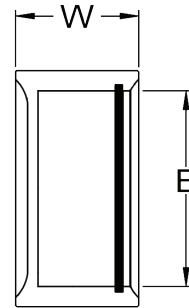
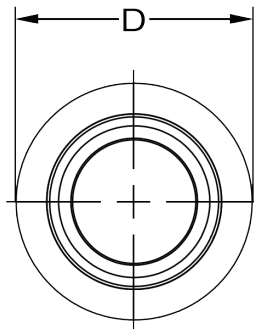
BEARING PART NO.	B DIA	D DIA	W WIDTH	T WIDTH	O DIA.	BALL DIA	F CHAMFER	α° MIS ANGLE	ULT. STATIC RADIAL LOAD (lbs.)	APPROX. WEIGHT (lbs.)
	+0.0015 -0.0005	+0.0000 -0.0007	+0.005 -0.005	+0.005 -0.005	REF.	REF.	REF.	REF.		
AIN3	.1900	.5312	.312	.250	.307	.437	.020	10.5	6,550	.016
AIN4	.2500	.6094	.375	.281	.331	.500	.020	14.5	8,427	.023
AIN5	.3125	.7500	.437	.344	.448	.625	.020	11.0	12,912	.039
AIN6	.3750	.8437	.500	.406	.516	.719	.020	9.5	17,512	.059
AIN7	.4375	1.0000	.562	.437	.587	.812	.020	11.0	21,290	.079
AIN8	.5000	1.0937	.625	.500	.699	.937	.020	9.5	28,110	.110
AIN10	.6250	1.3125	.750	.562	.839	1.125	.030	12.0	37,930	.165
AIN12	.7500	1.5000	.875	.687	.978	1.312	.030	10.0	48,675	.252
AIN14	.8750	1.5000	.875	.687	.978	1.312	.030	6.0	48,675	.248
AIN14T-770	.8750	1.6250	.875	.750	1.061	1.375	.035	6.0	58,650	.350
AIN16	1.0000	2.1250	1.375	1.000	1.275	1.875	.060	15.0	90,000	.788

AVAILABLE OPTIONS	SUFFIX	EXAMPLE
PTFE LINER	T	AIN10T

AIN / CP HEAVY DUTY PRECISION SPHERICAL BEARINGS, ALLOY STEEL

# CP

BEARING CUPS FOR SPHERICAL BEARINGS



PART NO.	B	W	D	BEARING CUPS WILL FIT THE FOLLOWING PART NUMBERS	SNAP RING PART NO.
CP8	1.0000	.750	1.250	COM8, FKS8, FKSSX8T	SR8
CP10	1.1875	.875	1.500	COM10, FKS10, FKSSX10T	SR10
CP12	1.4375	1.000	1.750	COM12, FKS12, FKSSX12T	SR12
CPW12	1.3750	1.000	1.750	WSSX12T	SRW12
CPW14	1.6250	1.250	2.000	AIN14T-770, WSSX14T	SRW14
CPW16	2.1250	1.500	2.625	AIN16, WSSX16T	SRW16
CPW16-1	2.1250	2.500	2.625	AIN16, WSSX16T	SRW16
CP20	2.375	1.500	2.875	COMH20	SR20
CP24	2.750	1.625	3.500	COMH24	SR24

PRECISION MANUFACTURED FROM 4130 ALLOY STEEL AND ARE COMPLETE WITH SNAP RING RETAINER. FABRICATION OF PARTS USING THESE CUPS SHOULD BE PERFORMED BY A QUALIFIED WELDER. CUPS COME STANDARD WITH A SNAP RING. REPLACEMENT SNAP RINGS ARE AVAILABLE.