

Assembly Instruction

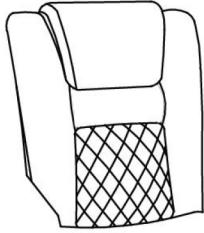


CD0268AF51D

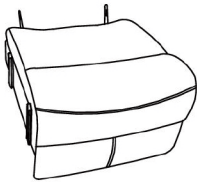
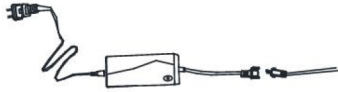
MADE IN CHINA

CAUTION: Do not use any sharp objects to open plastic wrapped components as damage to product or components may results.

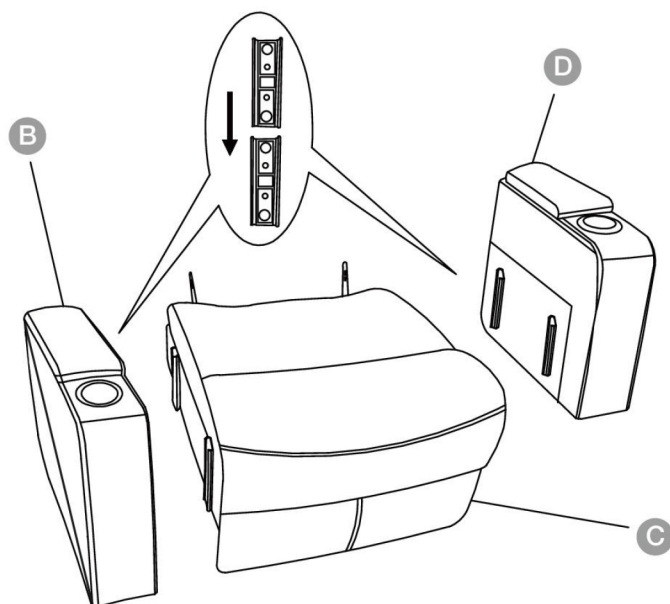
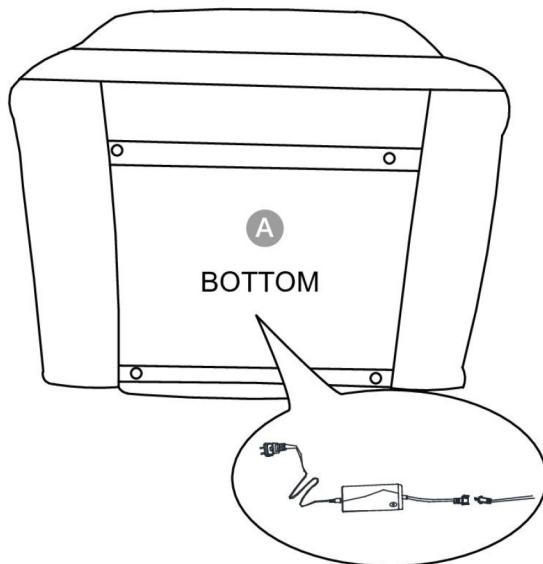
Your recliner comes packaged in two boxes. Carefully remove all components from the packaging and set aside for assembly.

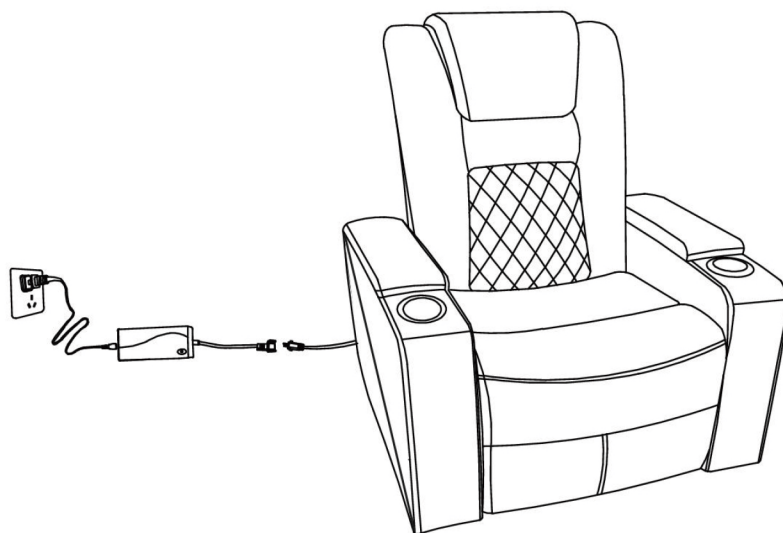
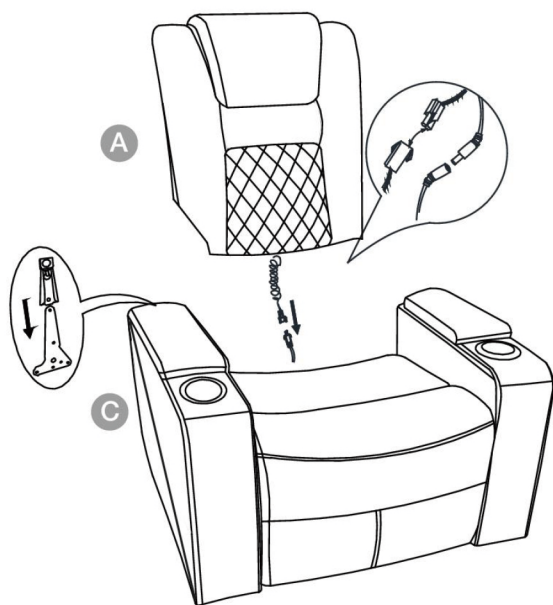
Before getting started, ensure the package contains the following components.

		
*1	*1	*1

	
*1	*1

Assembly





Warnings

1. Read the instructions carefully prior to assembling the product.
2. When you open the package with a sharp tool like a cutter knife, be careful not to damage the components inside.
3. Carefully remove all packaging materials and retain for future use.
4. Keep all hardware parts and packaging out of reach of small children.
5. Choose a clean, level, spacious assembly area. Avoid hard surfaces that may damage the product.
6. Ensure that you have all required contents for complete assembly.
7. Take care when lifting. Assemble the product in close proximity to where you intend to position the item.
8. Do not over tighten the screws and bolts as this may damage the threads.
9. When you have finished assembling the product, place it on a flat surface and make sure before use.
10. Do not let children play with this product.
11. Risk of suffocation! Keep any packaging materials away from children.