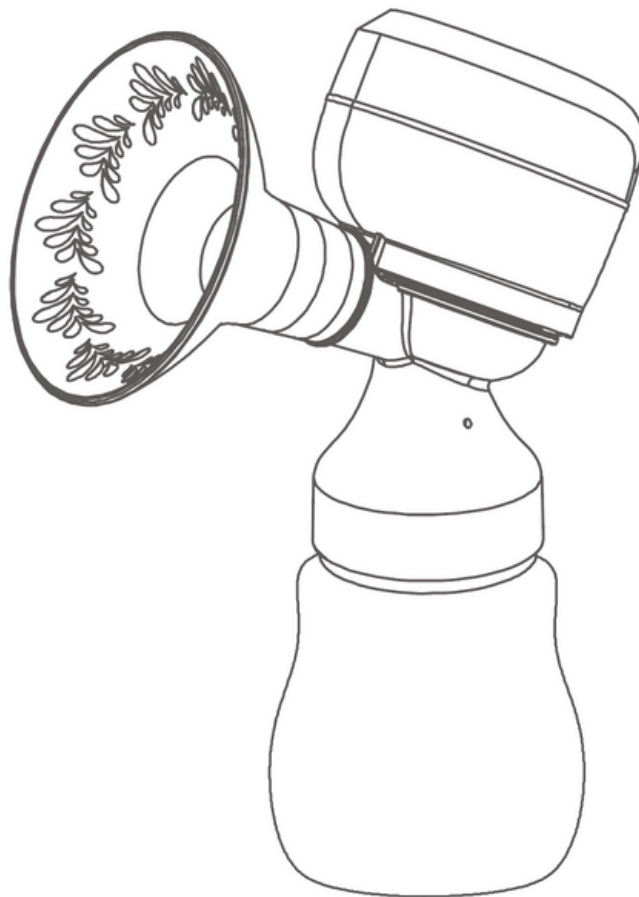


User's Guide

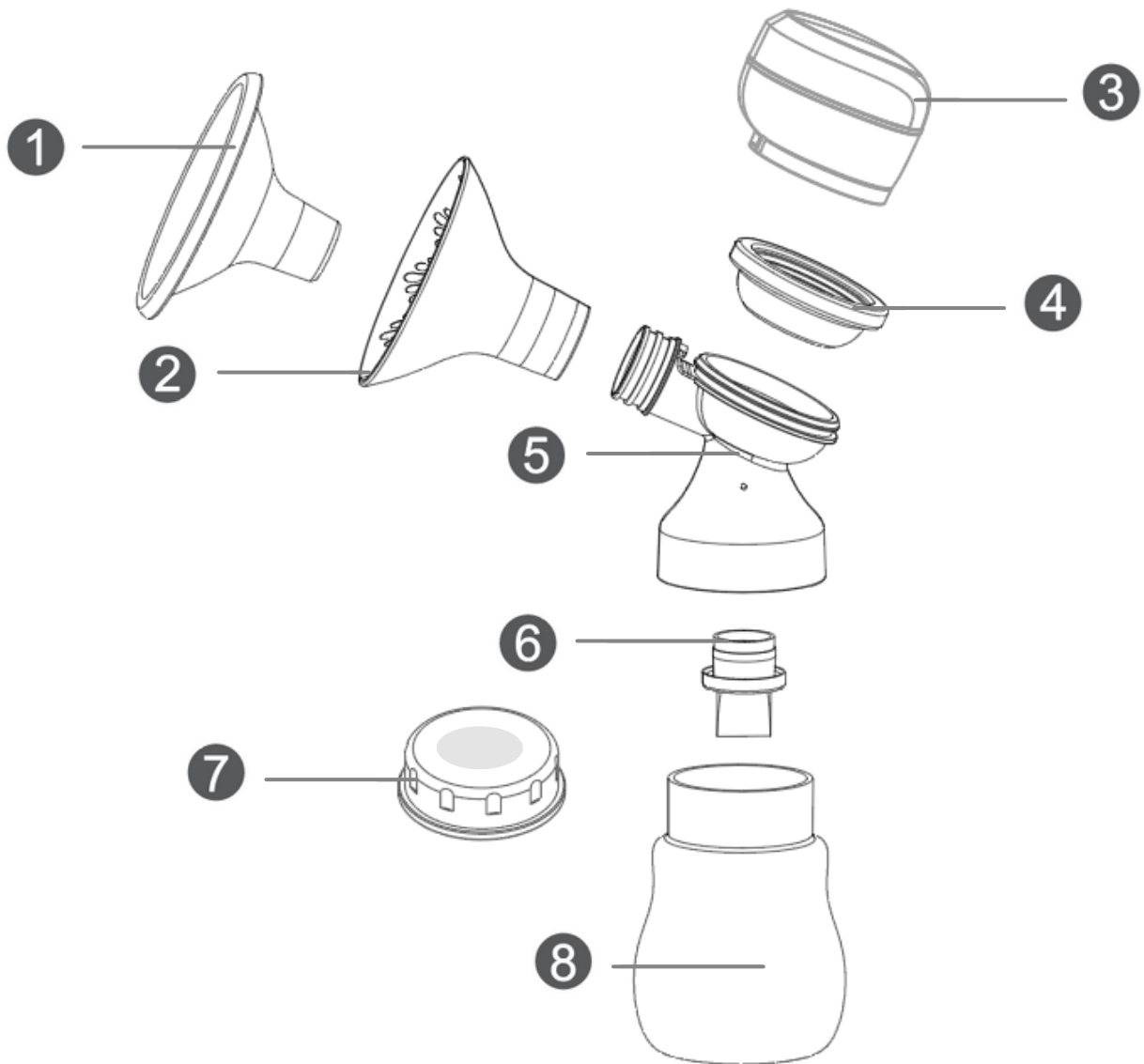
be mini x **Portable Breast Pump**



Please read this user's guide carefully before using

Description of Package Contents

Please check the quantity of the content before use. If there is any missing part, please contact the seller



1 Flange cover

2 Silicone Flange 24mm
(Silicone Flange 27mm sold separately)

3 Pump Motor

4 Diaphragm

5 T-Joint

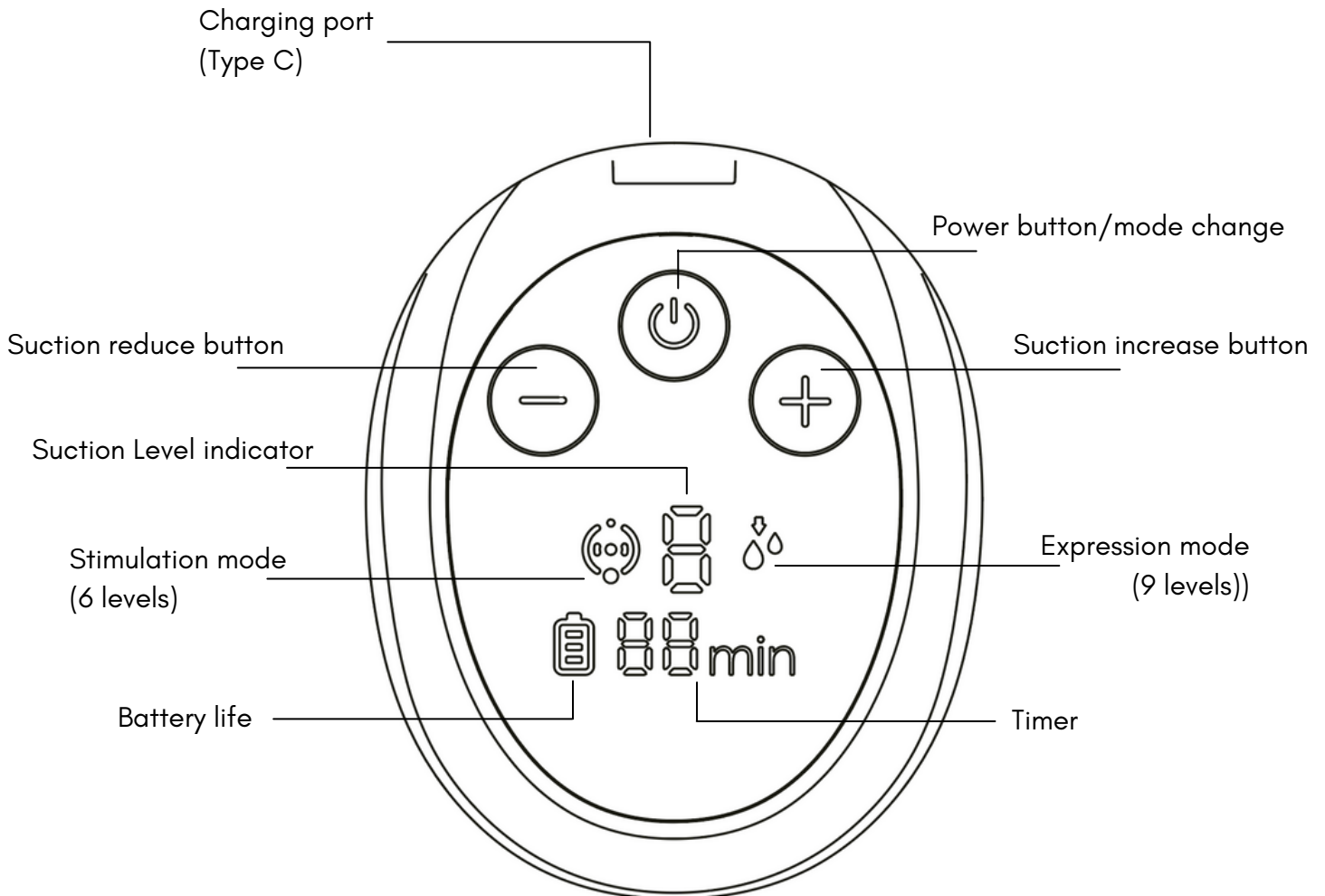
6 Silicone Valve

7 Bottle Cap

8 180ml PPSU Bottle

Note : Pump motor is not water proof. Do not wash with water or have it come in contact with any liquid.

Operation Panel



- **Power button** : Press and hold 2 seconds to on / off, press to change mode
- **Stimulation / Expression mode** : 2 essential modes for pumping
- **Suction increase/reduce button** : increase/reduce suction level
(massage 6 level / expression 9 levels)
- **Battery Life** : Total 3 bars, to charge once its at 1 bar level
- **Timer** : Indicates the pumping time in minutes

Note

The appliance will turn off automatically after 30mins of operation

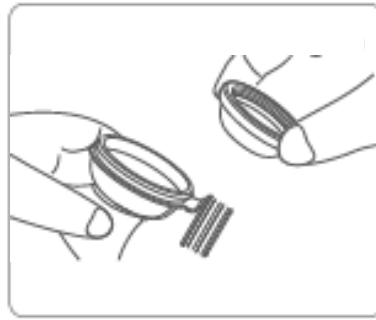
Full charge takes about 2.5 hours. Avoid overcharging.

Power adaptor excluded. Compatible with Output 5V 1A .

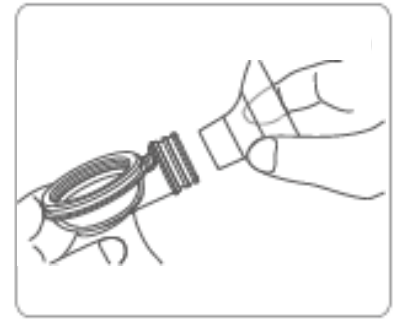
Assembly Sequence



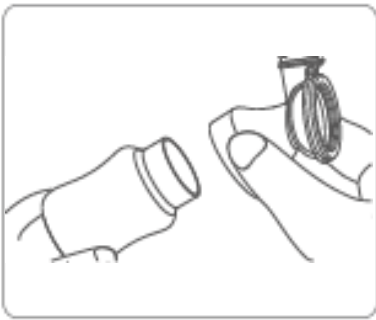
Insert valve into t-joint.
Ensure valve is fitted
tightly.



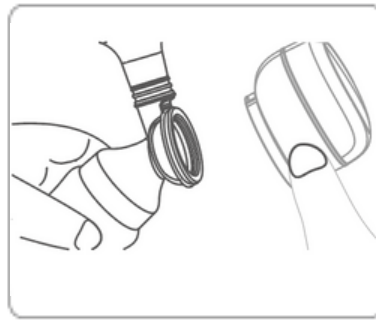
Insert the diaphragm on
top of the t-joint.



Insert flange of choice to
t-joint.



Screw on sterilised
bottle.



Sit the pump motor onto
the t-joint.

Wearing the pump

Put the assembled pump firmly onto your breast. Ensure that the nipple is aligned in the centre. Keep the pump upright at all times.

To use handsfree, pair it with a pumping bra.

Flip the flange mouth back, align and put onto breast, then flip the flange back to create a suction.

Cleaning and milk storage

Before use, please clean and sterilise the accessories. After use, clean the accessories as well, and keep them dry. Please note that motor and power adapter cannot be washed or sterilised.

When cleaning the silicone parts, please be gentle. If damaged, it will affect the suction.

Take apart accessories when cleaning and sterilising. Allow accessories to cool for 20 mins before assembling to avoid damage.

All of BE Mini X pump parts can be steamed, boiled and UV sterilised. Unless otherwise indicated. Pump motor, especially the bottom, should be wiped with damp cloth regularly.

Note

Please avoid over pumping to avoid breast injuries. Please seek medical advice if breast becomes painful because of using the breast pump.

To have a smooth milk pumping session, please set the suction level according to your personal preference.

Please off the power before stopping use and remove from breast.

All function of this product are described in the user's guide.

Always check the breast pumps and components for wear and damager before use. Replace if necessary.

Breast pump parts are recommended to be washed and sterilised before and after every use.

Do not use this product for other intentions not indicated in this guide.

Using handsfree is very subjective to individual. Some mothers may not be comfortable with the weight of the pump pulling onto their skin.