



MAKE YOUR OWN DOLL

INSTRUCTIONS



INTERIOR DOLLS

MAKING YOUR D'EUNA DOLL

⌚ Please ensure that you have read all the instructions to the end before you start making your doll.

⌚ When machine sewing ensure that you use a backstitch every time. Backstitching is done by sewing backwards and forwards at the beginning and end of a seam, on top of the seam stitches, to prevent the stitching from coming undone.

⌚ If, during the process of making, you have any questions, you can contact us through our Instagram page @D'EUNA.Kits. There you will find more information, including video tutorials.

THIS KIT INCLUDES:

Fabrics
Accessories (buttons, beads, shoes, hair, etc.)
Extra-long needle
Extra-strong thread

YOU WILL NEED:

A sewing machine
Threads to match the fabrics
Scissors, pins and needles
A hot glue gun (optional)
Hollow-fibre toy stuffing 150- 200g *
And of course FREE TIME (the making of one doll can take up to 2 days)

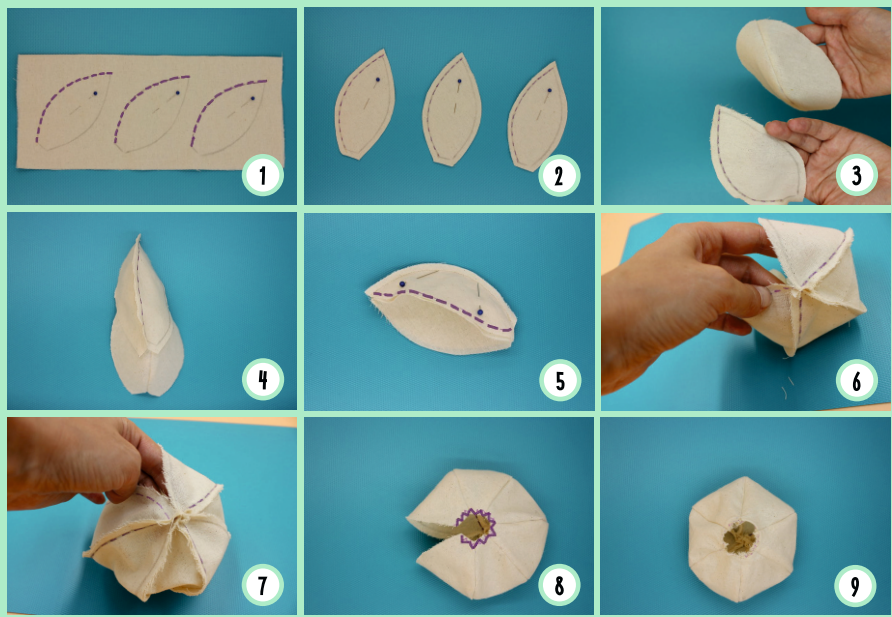
* This is roughly how much stuffing you will require:

HEAD 55-60g.
EACH ARM 3g.
EACH LEG 6-7g.
BODY 38-40g.

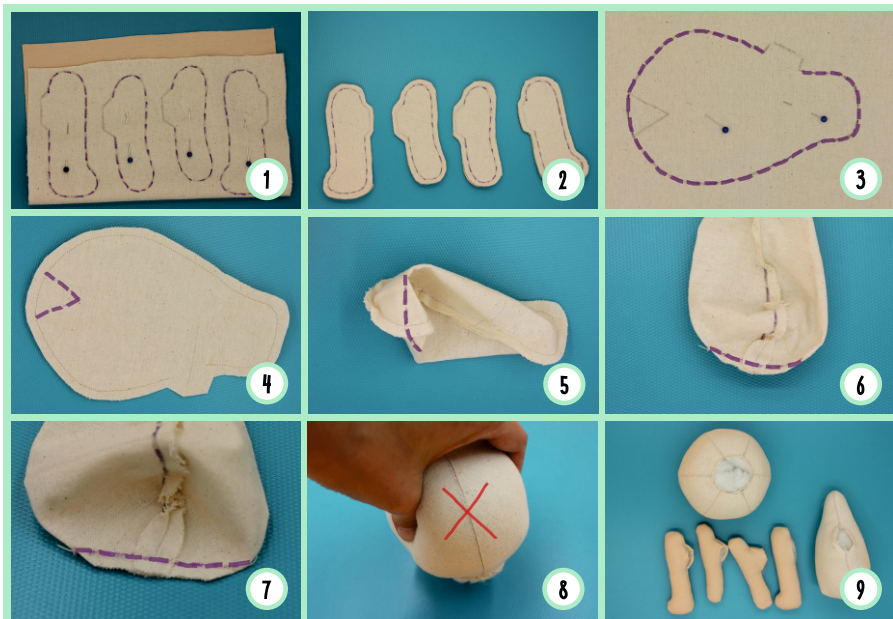
WARNING This sewing kit is not intended for use by children under the age of 14. Once the doll has been made it should be used for decoration only and should not be passed on as a toy to others.



LET'S START MAKING



- 1** Take the 25x30cm piece of beige fabric and fold it in half lengthwise. Place the head pattern at a 45 degree angle and trace it. Pin the two halves of fabric together to prevent it from shifting. DO NOT cut anything yet
- 2** Sew along one side (as shown in picture 1 in purple) and then cut out leaving a 5 mm gap.
- 3** Take two (out of three) of the petal-shaped pieces that you have made and turn one of them inside out. Place the piece that you turned inside out onto the other piece so that they are face to face (picture 4). Then sew along one of the sides (as shown in purple in picture 5).
- 4** Repeat this process to attach the third piece.
- 5** Go over the lower opening with a zigzag stitch on a sewing machine. Then sew the last remaining side closed. Turn the head inside out.



1 Place the 20x25cm piece of cotton fabric on top of the jersey fabric and fold them in half, widthwise. You should get the cotton layer on the outside and the jersey fabric on the inside. Trace the patterns of the legs and arms. Without cutting out the arms and legs sew along the traced lines leaving the opening open so that the pieces can be turned inside out.

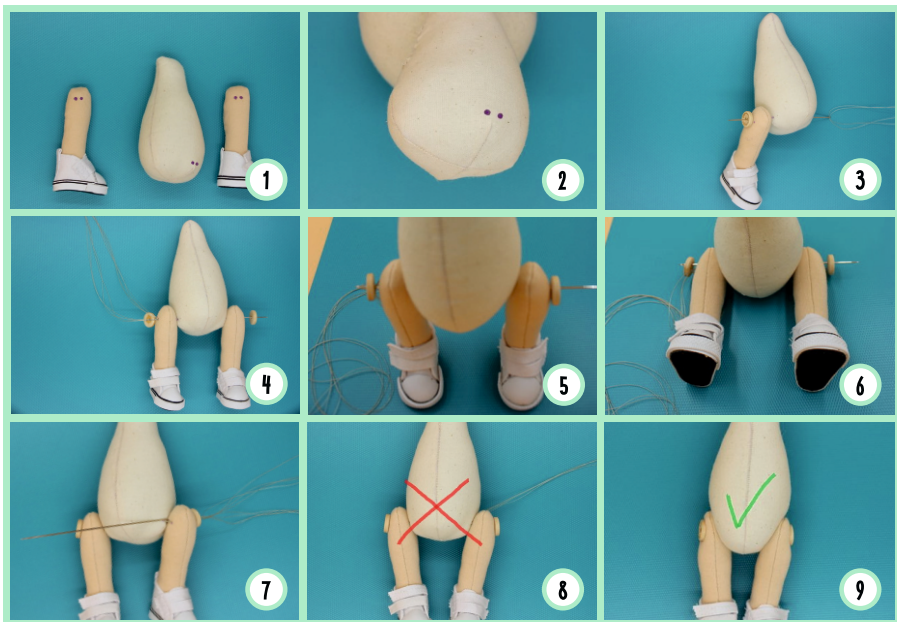
2 Cut out the pieces leaving a 5 mm gap from the stitching. Turn inside out using the opening.

3 Take the 16x25cm piece of beige fabric and fold it in half. Trace the pattern of the body and sew along the line leaving the opening so that the pieces can be turned inside out. Then cut it out leaving a 5mm gap from the stitch.

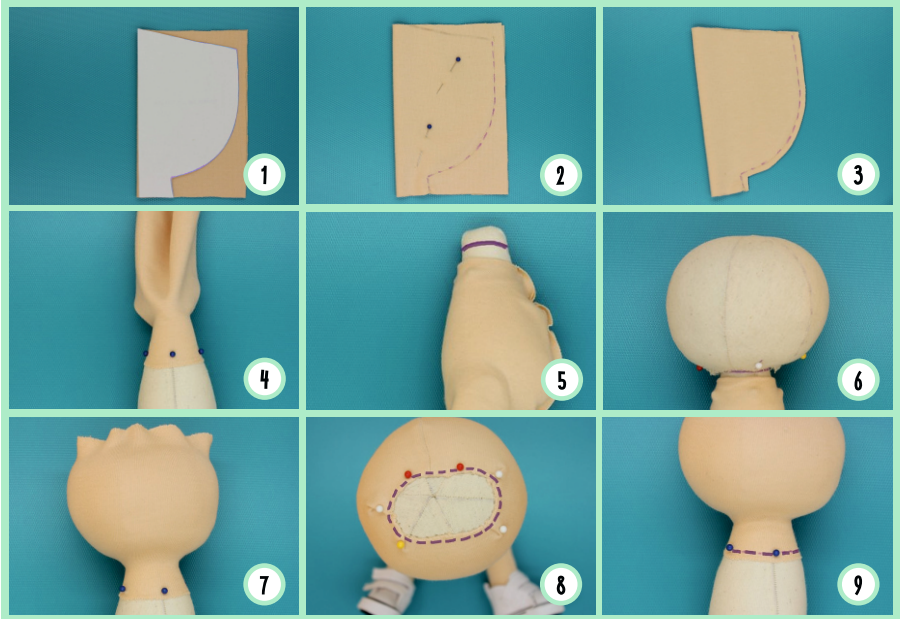
4 Now you need to sew the dart, to make the shape three-dimensional. To do this you have to trace the triangle pattern on the other side of the body so that it lines up with the first one that you traced. Fold the dart in half, right sides together, matching the marked lines. Place the top of the dart under your machine foot. Use the marked line to position the fabric so you will be sewing straight. Then cut off the excess.

5 Now you need to stuff all the parts of the body. The parts have to be stuffed firm so that when you push down on them they don't change shape. The legs are supposed to be stuffed the most, otherwise the doll will not be able to stand up. When stuffing the arms, stuff up to the wrists generously but then the rest of the arms do not have to be stuffed as much, as long as they keep their shape.

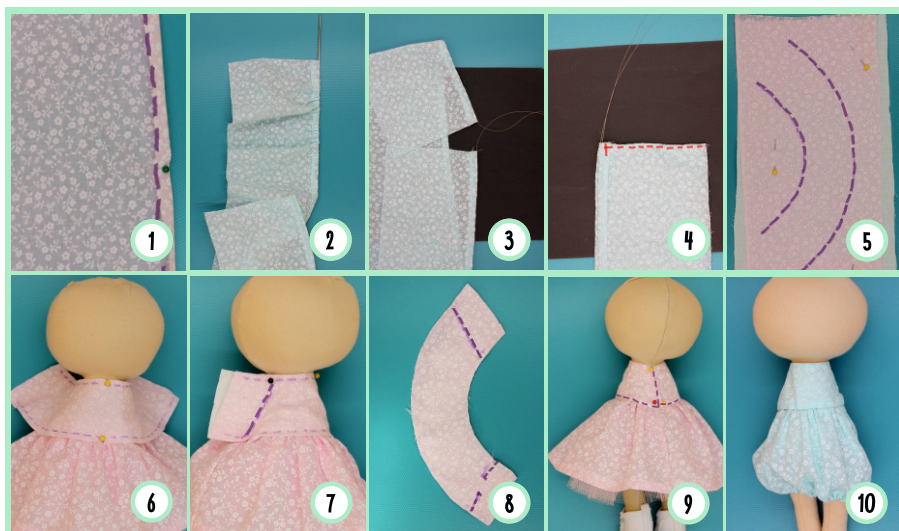
6 Using an invisible/ladder stitch, close the openings in the arms and body, leaving the opening in the head open.



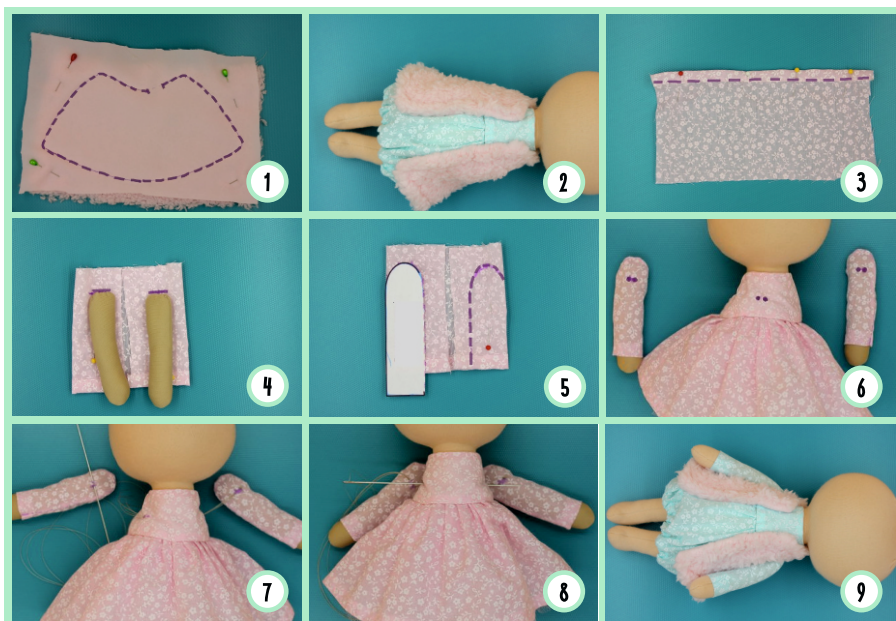
- 1** Before sewing the legs onto the body it is very important that you mark the correct places where the legs will be connected to the body or else the doll will not stand.
- 2** From the top of the leg leave a 2cm gap from both the inner and outer sides of the leg and draw two dots using the holes in the buttons provided as a guide. If both legs are the same size then you can do the same thing on the other leg. However, if the legs for some reason turned out to be slightly different sizes then you can do one of the legs and then line up the other leg next to it and put a needle through both of them.
- 3** The legs will be sewn onto the body where the dart ends (as shown in picture 2). The two holes should be an equal distance from the stitch of the dart.
- 4** Now you are ready to sew the legs onto the body. Take the 3 m of extra-strong thread provided, fold it in half, thread it through the needle provided and tie a knot on the end. This will create 4 strands of thread which you need to put through one of the marks on the body and pull out on the other side.
- 5** Put the needle through the leg and one of the holes in the button, then bring the needle back through the other hole in the button and back through the leg to the other side of the body. Add the other leg and button, threading your needle through and then back through the other hole of the button. At this stage you should ensure that the doll can stand and sit. Go around once again threading each button. Then bring out the needle where the leg meets the body.
- 6** Tighten the thread. It must be very tight so that the shape of the body changes (as shown in picture 9). In picture 8 the thread is not tight enough and this can result in the doll not being able to stand up.



- 1 Take the 20x15cm piece of jersey fabric and fold it in half crosswise, to get a 10x15cm piece.
- 2 Place the pattern on the folded edge, trace it and sew the side (as shown in picture 2 by a purple line). Then cut out leaving a 5mm gap between the stitch and edge.
- 3 Turn it inside out and put it over the neck, pinning it in place. Ensure that the seam is to the back of the doll.
- 4 Pull down the fabric onto the body and mark around the neck where the head will be sewn on. This should be roughly 2-2.5cm from the top.
- 5 Find the best side of the stuffed head; this will be the face. Put the head onto the neck, and pin in place. Then sew down using the extra-strong thread provided
- 6 Pull up the head cover, ensuring that there are no wrinkles on the face or the neck. Pin this in place and sew it.
- 7 Now sew on the bottom of the head cover, where it meets the neck.



- 1 Take the 56x12cm piece of fabric and hem it by folding roughly 1cm.
- 2 Pull the thread through the hem of the skirt, leaving two loose ends on either side.
- 3 Connect the two sides of the fabric and sew along, leaving a 2mm gap where the hem is so that the loose thread remains untouched.
- 4 Pin the skirt to the body with the hem side down; the seam of the piece should be at the back. Stitch the skirt in place at the back. Then do a running stitch round the waist of the skirt and tighten the thread so that the skirt bunches up. Sew the rest of the skirt to the body
- 5 To make the top of the dress take the floral and white pieces of fabric which are 22x12cm and put them face to face. Pin in place to prevent them from moving. Take the pattern, trace it and sew along the two lengths.
- 6 Now wrap this around the doll's body to get the length that you need. Try to centre the rainbow-shaped piece with the stomach. Pin it in place.
- 7 Mark where the fabrics meet on both ends. Then sew along these two lines, leaving a gap on one of them so that it can be turned inside out.
- 8 Turn the top inside out and make sure to iron it. Then sew up the gap using a ladder stitch.
- 9 Pin the top back onto the body, ensuring that the seam is on the back of the doll. Ladder stitch the ends.
- 10 Attach the top part of the dress over the skirt using a ladder stitch. Pull both of the threads at the hems in order to bunch up the skirt, tie a knot and cut off the excess thread.



1 To make the vest take two pieces of pink fabric (fluffy and plain) which are 25x16cm and put them face to face. Take the pattern, trace it and sew along the edge leaving the opening open. Turn the vest inside out through the opening and sew it shut using a ladder stitch.

2 Using a ladder stitch attach the vest to the body in few places to prevent it from moving.

3 Take the 15x12cm piece of fabric for the sleeves of the dress and fold over 1 cm of the edge lengthwise and sew along it. This will create the hem of the sleeve.

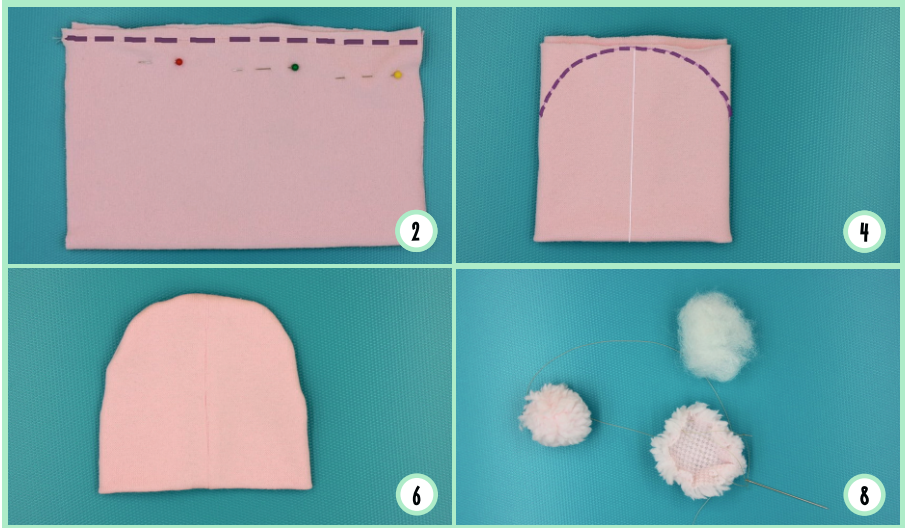
4 Fold the two ends into the middle. Then, using the arms as a reference, mark the length of the sleeve.

5 Place the pattern of the sleeve to the marked point and trace. Make one of the edges of the sleeve pattern touch the folded edge of the fabric so that you only have to sew one part of the sleeve (as shown in picture 5). Sew along the marks.

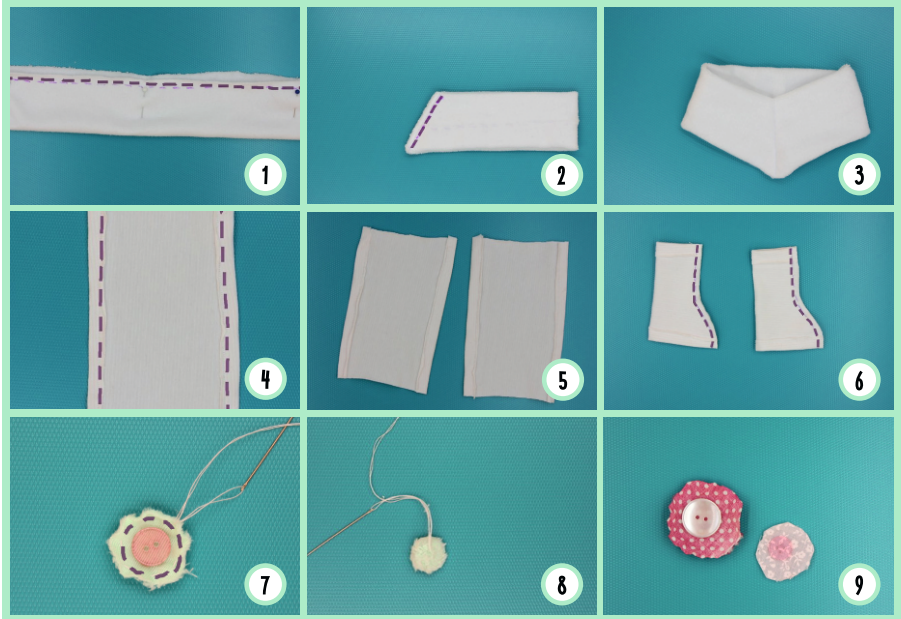
6 Turn them inside out and pull them over the arms. Place the arms on the body; they must line up with the legs. Mark where you want to sew them onto the body and then take them off. From the top of the arm leave a 2cm gap and mark; this is where the arms are going to be sewn onto the body.

7 When sewing on the arms you only sew through the inside of the thread provided.

8 Thread your needle through the marked part of the arm and through the marked part on the body. Pull the needle through the whole body and connect the second arm. Pull the needle through the body to the other arm and repeat this process. Pull the thread tightly.



- 1 To make the hat, take the 20x25cm pink jersey material and fold in half lengthwise, to get a piece of fabric 10x25cm. Sew the two ends together to get a tube/cylindrical shape.
- 2 Turn the tube inside out in order to get a nice seam. Once it is turned inside out, tuck one of the ends into the other to get half of the original tube.
- 3 Twist the fabric so that the seam is in the middle of the tube, trace the pattern provided having the curve where the fabric is not folded and sew along the lines.
- 4 Now to make the pom-pom ears, take the piece of fluffy pink fabric, trace the pattern and cut around the circles without leaving a gap.
- 5 Hand stitch around the perimeter using a running stitch, put a ball of stuffing in the middle and pull the thread to tighten the fabric. Put the pom-poms to the side as they will be sewn onto the hat at the very end.



1 To make the scarf, take the 30x12cm piece of fabric and fold it in half lengthwise, sewing the edges together. Turn it inside out and lay it down so that the stitching is down the middle. Fold the scarf widthwise and sew the ends together at a 25 degree angle (as shown in picture 2).

2 To make the leg warmers, take the 25x10cm piece of jersey fabric and create a hem, on both of the lengths, of 1cm. Once the hem is sewn in place, cut the fabric in half widthwise; this should leave you with two pieces 12x8cm. Fold one of the rectangles in half so that the hem is on the top and bottom, then trace the leg warmer pattern onto the folded rectangle. Sew along the open side, leaving the top and the bottom open. Repeat this with the other piece of fabric.

3 To make the buttons, take the two small pieces of fabric and cut out two circles, doubling the diameter of the buttons. Complete a running stitch by hand around the fabric, then place the button in the centre and pull the thread tightly. Repeat this with the other buttons.



- 1** Put on the leg warmers and then the shoes. Pull the leg warmers over the shoes, arranging them to look nice. Then glue them to the shoes using a hot glue gun.
- 2** This next step is very important. You need to mark where the edge of the hat is using pins, before you take it off. First place a pin at the top edge of the hat, which would be the centre of the face. Then 1cm below that, put a pin on either side (this will later help you position the hair).
- 3** On the same level as the two pins that you have just placed, draw a line going around the perimeter of the head, leaving a 5mm gap between the pins and the line. Now use this line as a guide so that you can either hot glue gun or sew the hair onto the head. Cut off the excess to get another layer of hair. Glue it above the first layer in the same way.
- 4** Now put the hat back on and sew on the pom-poms and the button. You can put these wherever they look right. Put on the scarf, pin it in place and then either glue it down or sew it in a few places to ensure that it stays in place.
- 5** Once again find the centre of the face and place a pin there in order to mark it. 1cm below the pin is where the eyes are going to be, so mark this place and stick on the black gems provided
- 6** Take some blush and a brush, then add rosiness to the cheeks. Brush through the hair and arrange it nicely.
- 7** Well done! You have made your D'EUNA doll.

NOTES

NOTES



INTERIOR DOLLS

WARNING This sewing kit is not intended for use by children under the age of 14. Once the doll has been made it should be used for decoration only and should not be passed on as a toy to others.

The patterns are intended for personal use only.