

## Toyota Yaris GR RallyflapZ

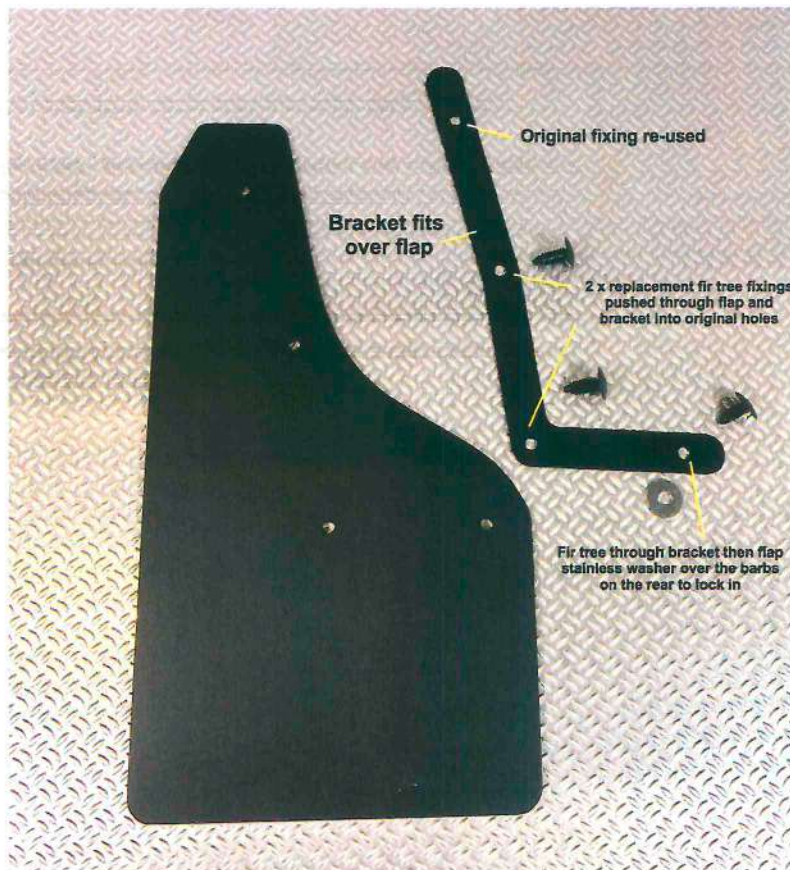
### ***Mud flap Fitting Instructions***

Please read the tips below very carefully.  
The flaps have been professionally measured and cut to fit.

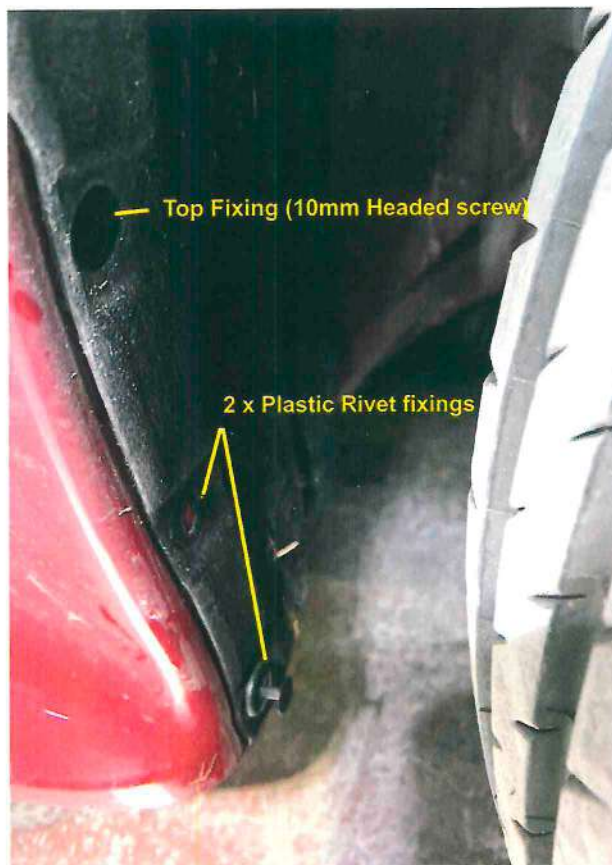
#### ***Front Fixings –***

Qty x 4	Black plastic fir tree fixings (Replacements)
Qty x 6	Adhesive backed rubber washers
Qty x 2	Smaller Black plastic fir tree fixings
Qty x 2	M6 stainless steel washers
Qty x 2	Satin black stainless steel mud flap brackets

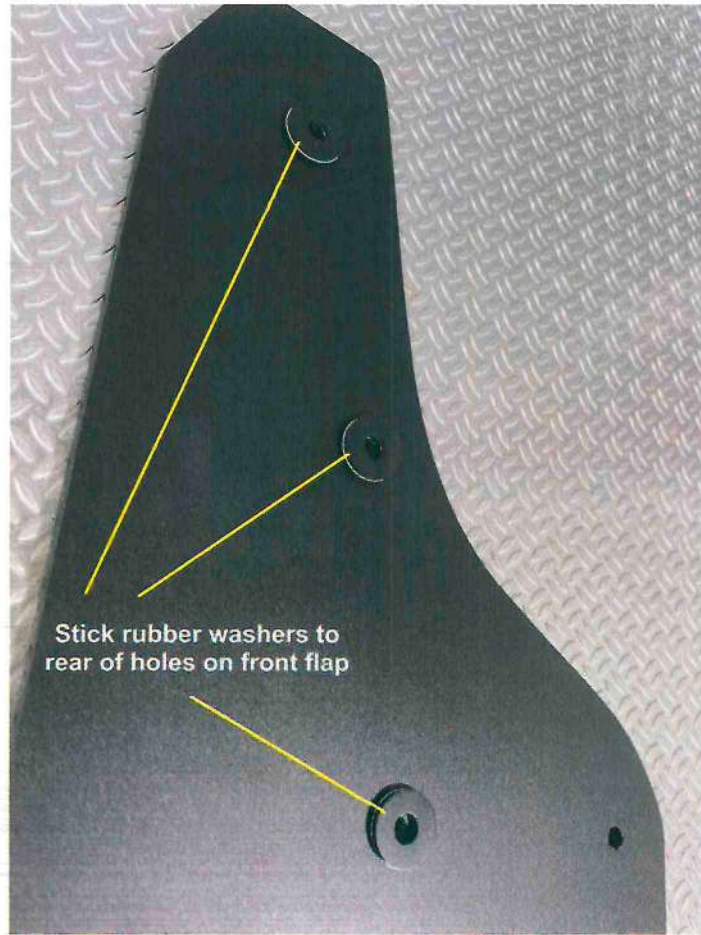
#### ***Front Mud Flap fitting:***



1. To gain access to the front wheel arch, turn the wheels full lock to each side.
2. We use the three factory fitting positions to fit the front mud flaps, the top one is a 10mm head screw and the other two are plastic two-piece fixings. To remove them, insert either a trim removal tool, or a small flat blade screwdriver to lift up the centre section – the clip should then loosen and pull out. Replace with our longer fir tree fixings.



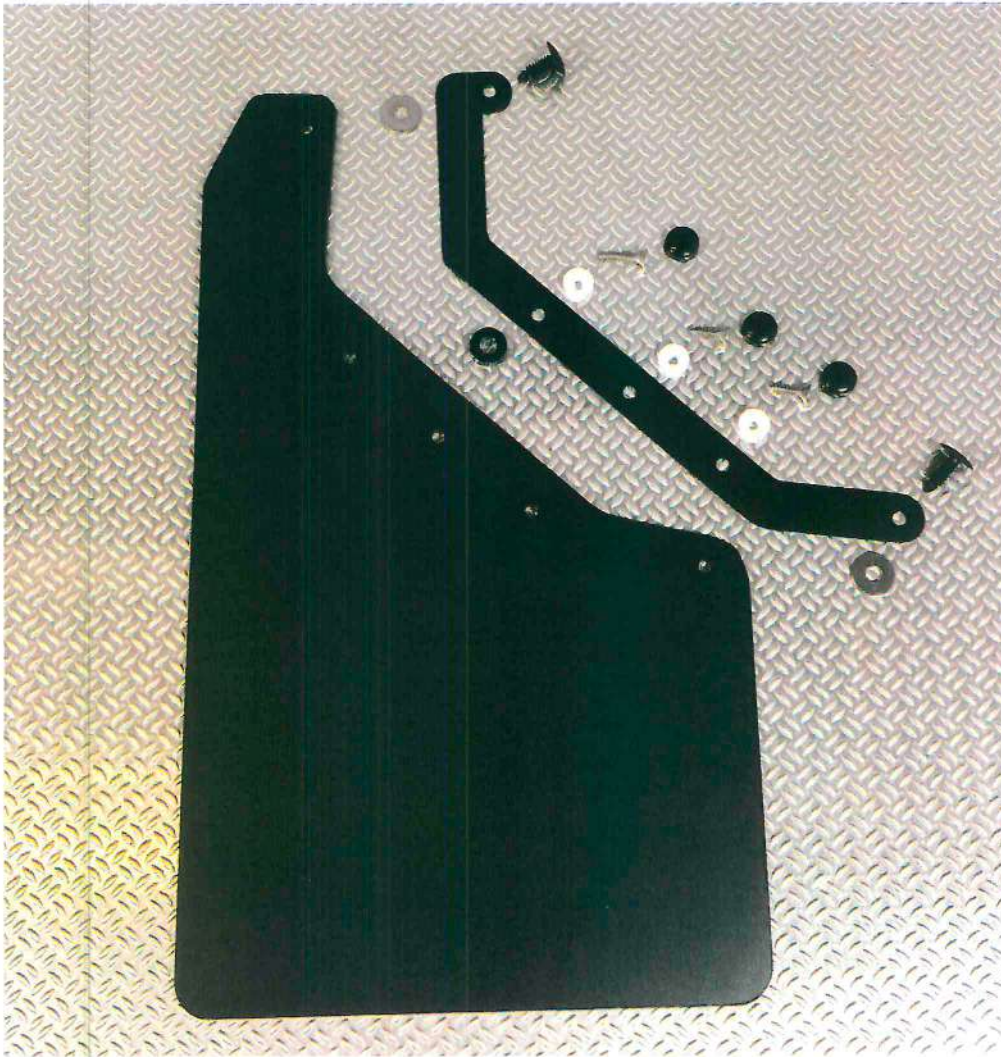
3. We re-use the top fixing and replace the lower two with the supplied fir tree fixings. The fir trees go through the bracket / flap and push into the original fixing hole.
4. The bracket goes over the top of the flap, the inner most fixings are just to hold the bracket to the flap as the inner arch liner falls away. Push a supplied fir tree fixing plug through the bracket and flap and push a supplied stainless washer over the blades of the fir tree fixing behind the flap to lock it in position.
5. We have also supplied 3 x adhesive backed rubber washers to stick to the mud flap behind each outer fixing hole – this is just to space out the small indent in the arch liner, to give a smoother connection of the flap to the arch liner.



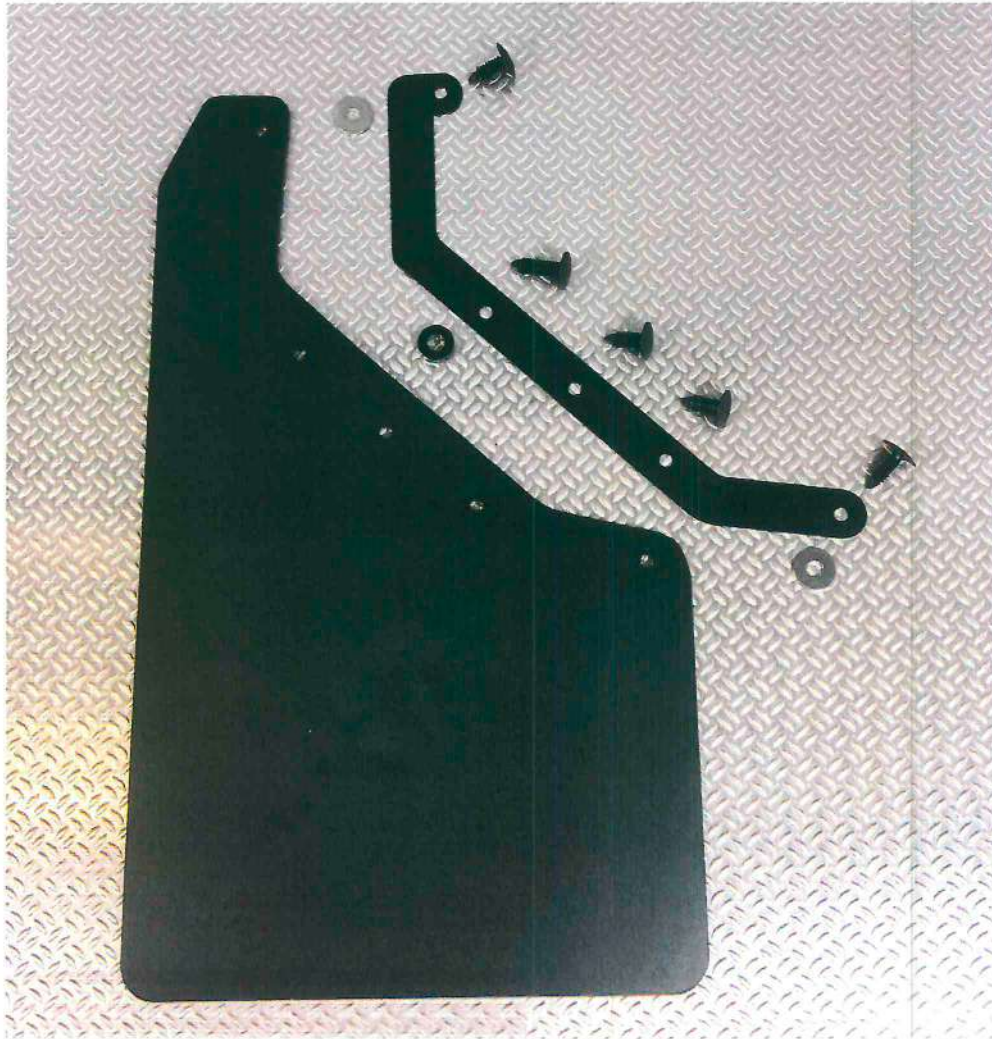
**Rear Fixings –**

Qty x 2	Large stainless steel laser cut brackets
Qty x 8	Plastic self gripping fir tree fixings – 20mm long
Qty x 2	Plastic self gripping fir tree fixings – 27mm long (use with spacer)
Qty x 4	M6 x 18mm stainless steel washers
Qty x 2	5mm Black nylon spacers
Qty x 8	4.8 x 19mm countersunk s/s screws
Qty x 2	4.8 x 25mm countersunk s/s screws
Qty x 10	Snap Cap screw covers
Qty x 8	Double sided glue pads
Qty x 4	Alcohol wipes

**Rear mud flap fitting:**



Rear flap with screws



Rear flap with fir tree fixings

1. On the rear of the car there are no original fixing points we can use to align the mud flaps. We put some thought into where to fix to – and decided to fix to the arch liner centrally – and on the extreme outer parts we just hold the flap to the bracket without having to drill or screw on the outer wheel arch lip.
2. We suggest screwing into the tough inner arch liner – or even using the supplied fir tree fixings (requires a 6mm hole drilling). Care must be taken when aligning the rear flap.
3. There is a protruding lip on a 45-degree slope – which kind of gets in the way of putting a fuller flap in there, so we made the mud flap fit under the lip, for a more snug fit.
4. We suggest using the screws initially – and fitting the central one first, so you can swing the flap on that to ensure it is hanging straight. Once happy you can mark up - or use some of the glue tape to hold the flap in position, then screw in another fixing. It is better to do at a garage on a ramp – so you can remove the wheel and ensure everything is straight before fixing.
5. The most outer fixing point of the central 3 fixings requires a 5mm spacer behind it as the flap starts to move outwards towards the edge of the bumper and there is a slight lip – the spacer is required to stop pushing a kink in the flap. We also supply a longer screw or a longer 27mm fir tree fixing plug for this application.
6. The top outer fixing is just to fix the flap to the bracket and the bracket pushes the flap against the wheel arch edge. This is a supplied fir tree fixing with a 20mm stainless washer pushed over the barbs behind to lock it tight.



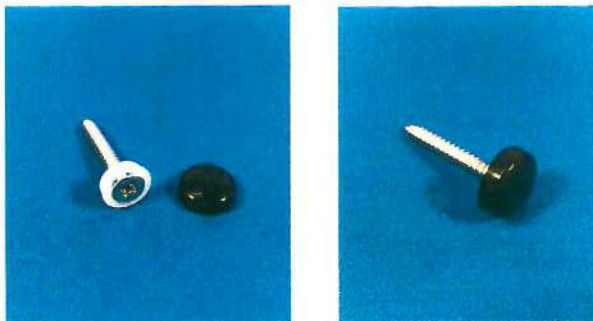


7. We have supplied some double-sided automotive glue pads to help keep a snug fit to the arch lip – if you fix this in position first (checking it for position when holding the flap against the car) then when the mud flap is fixed – you can peel the outer film off and stick it to the flap. The tape is very strong, but the surface must be cleaned thoroughly for it to stick well.
8. The lower inner most point is again a fir tree plug through the flap and bracket with a 20mm stainless washer pushed over the barbs at the rear to lock it tight.
9. If at any point where the glue pads are, you want to replace with a screw into the plastic, we have included some extra 4.8 x 19mm cs self-tapping screws with snap cap lids.



Rear flap position.

How to use screw cover



Stand back and admire!

Please take your time in fitting these flaps. Fitted correctly they enhance the look of the car 100% and protect against stone chips etc.

We cannot be held responsible for any damage to the car from mis-fitting. If you are in any doubt about fitting these mud flaps, please seek help.

REMEMBER – You have mud flaps fitted, beware when reversing near kerbs, then can get trapped between the wheel and kerb and pulled off – be careful.

Contacts: Tel. 091 647 25 03 ; E-mail: [racing@ravasicorse.ch](mailto:racing@ravasicorse.ch)