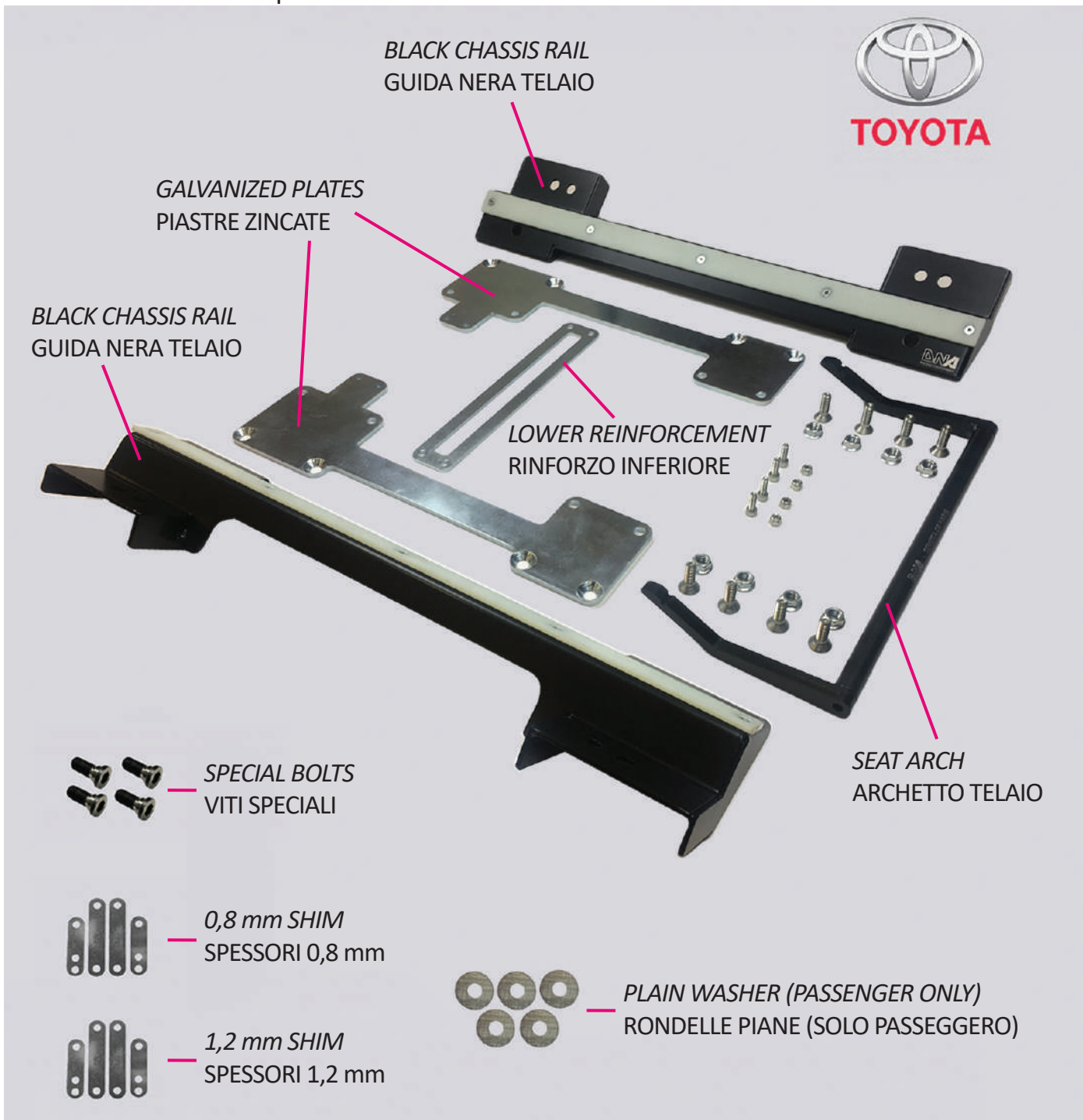


PC1789 TOYOTA GR YARIS

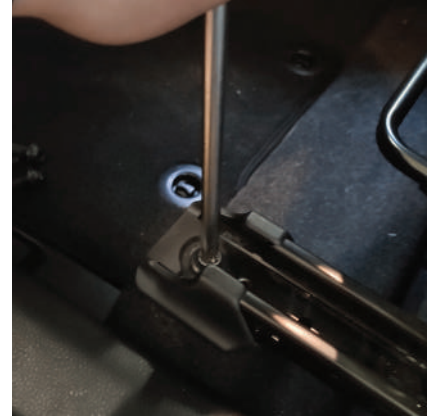
- SEAT LOWERING KIT ASSEMBLY INSTRUCTION pag. 2
- ISTRUZIONI ASSEMBLAGGIO KIT ABBASSAMENTO SEDILE pag. 8

The kit includes all the components shown below
Il kit include tutti i componenti mostrati sotto

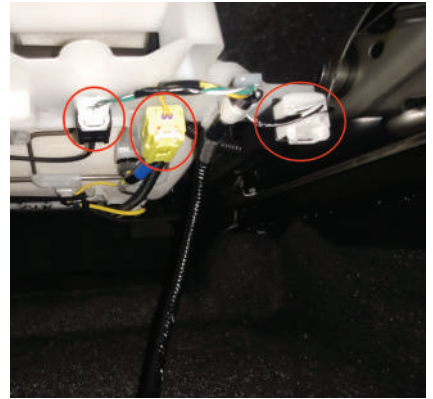


DRIVER SIDE

1. Remove the four bolts that hold the seat on the chassis using a T50 torx key.

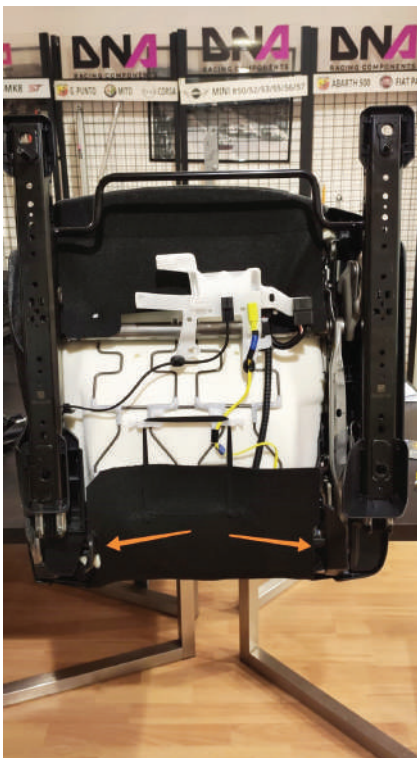


2. Slightly raise the seat and disconnect the two connectors of the airbag and one of the seat heating system (where provided), using a small screwdriver.

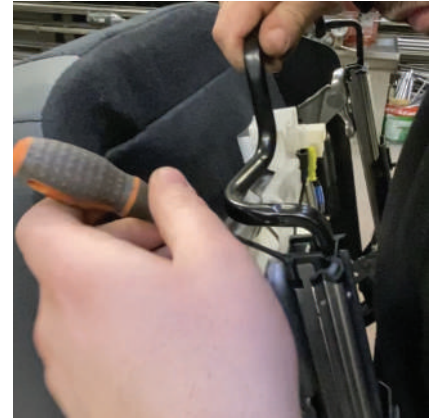


3. Remove the complete seat from the vehicle and lay it on a table. Position the seat in its highest position using the adjustment lever.

4. (Optional) Remove the two little parts of the seat trim shown below, using a air hack-saw.



5. Remove the seat arch adjuster using a small screwdriver in order to disconnect it from the rails on both sides.



6. Remove the eight M8 nuts that hold the seat rails to the seat, using a 12 mm spanner.



7. Disconnect the rails and remove the four plastic trim of the seat rails too. You don't need them anymore.

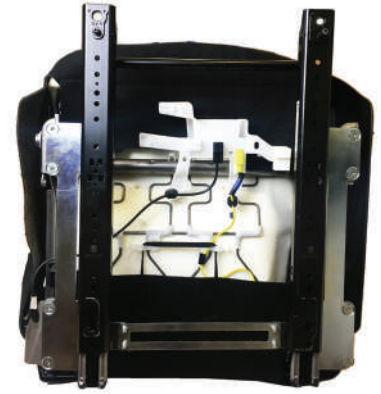


8. Take a 12 mm spanner and a 5 mm allen key to connect the left and the right rails to the galvanized plates trough the eight M8 nuts that you removed on point 6.



Remember to interpose the four 0,8mm shim between the rails and the galvanized plates.

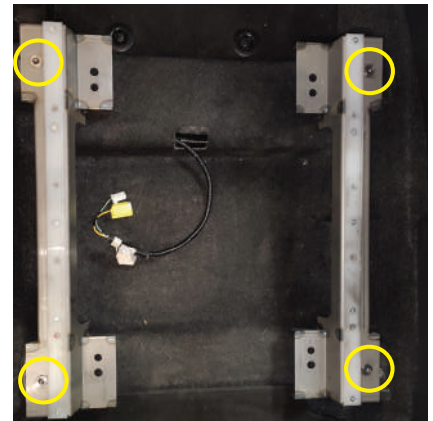
9. Once the rails have been assembled with the galvanized plates, you can connect the rails to the seat using the eight hexagonal countersunk head screws and the eight flanged nuts supplied in the kit.



10. Connect the lower reinforcement using the four M5x16 hex socket head screw and the four M5 self locking nuts supplied in the kit.

11. Fit the new adjustable seat arch supplied in the kit.

12. Fit the two black chassis rails on the car using the four M10x1,25 special bolts supplied in the kit.



13. Now you are ready to fix the complete seat, as prepared on point 9 on the vehicle. Lay the seat on the black chassis rails, connect the three connectors, and then secure the seat using the stock Toyota M10x1,25 bolts you have removed at point 1 and four M10 self-locking nuts.

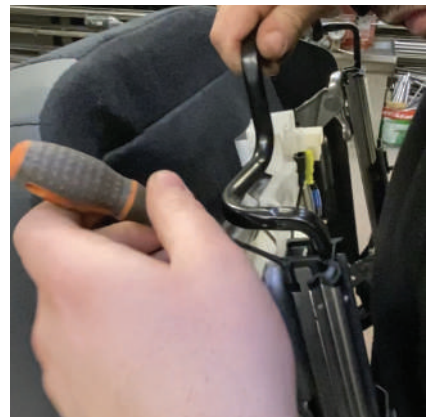
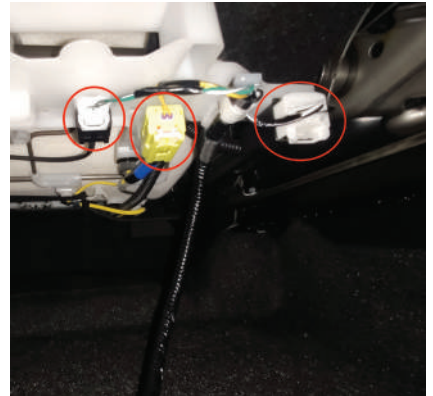
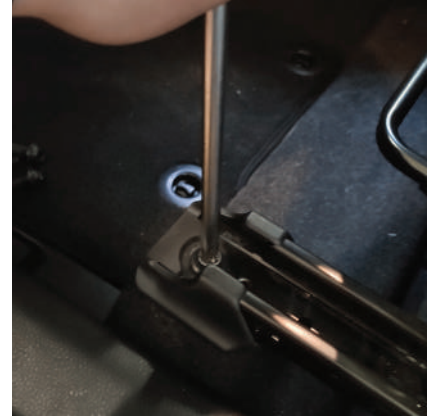


14. If you want you can spray a bit of WD40 on the nylon sliding plates to reduce friction and allow a smoother movement.



PASSENGER SIDE

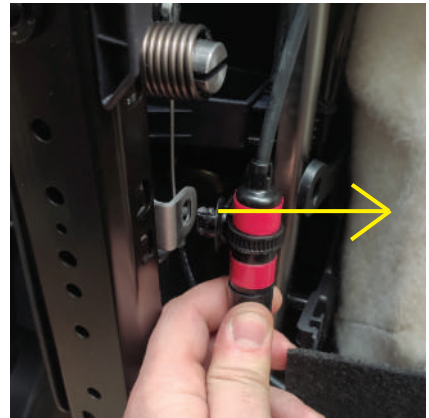
1. Remove the four bolts that hold the seat on the chassis using a T50 torx key.
2. Slightly raise the seat and disconnect the two connectors of the airbag and one of the seat heating system (where provided), using a small screwdriver.
3. Remove the complete seat from the vehicle and lay it on a table.
4. Remove the seat arch adjuster using a small screwdriver in order to disconnect it from the rails on both sides.
5. Remove the five M8 nuts that hold the seat rails to the seat, using a 12 mm spanner.



6. Disconnect the rails and remove the four plastic trim of the seat rails too. You don't need them anymore.



7. Disconnect the red cable connection from the retaining clip on the seat rail.



8. Clamp the red cable connection to plastic plate on the seat.

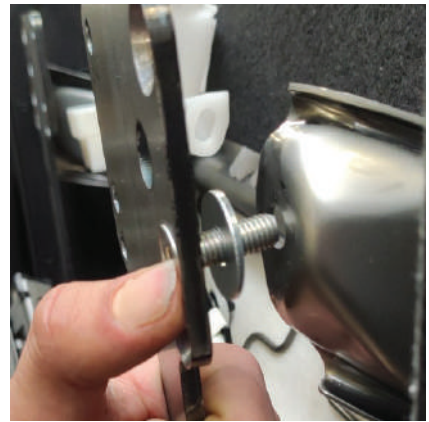


9. Take a 12 mm spanner and a 5 mm allen key to connect the left and the right rails to the galvanized plates through the five M8 nuts that you removed on point 5.

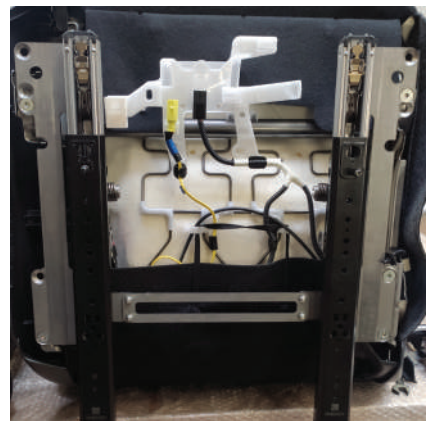
Remember to interpose the four 1,2mm shim between the rails and the galvanized plates.



10. Once the rails have been assembled with the galvanized plates, you can connect the rails to the seat using the five hexagonal countersunk head screws and the five flanged nuts supplied in the kit interposing the five plain washers as shown.

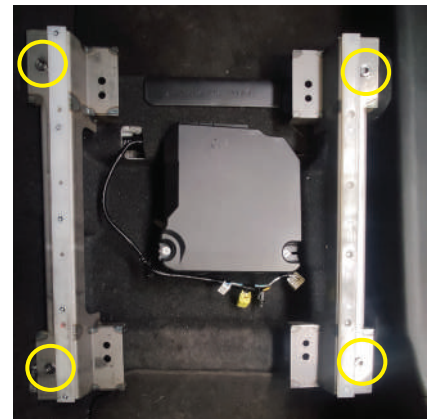


11. Connect the lower reinforcement using the four M5x16 hex socket head screw and the four M5 self locking nuts supplied in the kit.

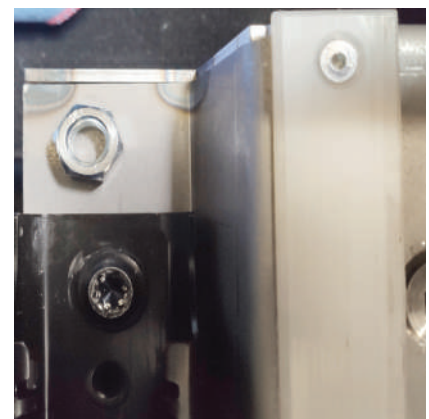


12. Fit the new adjustable seat arch supplied in the kit.

13. Fit the two black chassis rails on the car using the four M10x1,25 special bolts supplied in the kit.



13. Now you are ready to fix the complete seat, as prepared on point 10 on the vehicle. Lay the seat on the black chassis rails, connect the three connectors, and then secure the seat using the stock Toyota M10x1,25 bolts you have removed at point 1 and four M10 self-locking nuts.



14. If you want you can spray a bit of WD40 on the nylon sliding plates to reduce friction and allow a smoother movement.