

ZULS

ultimate lighting solutions



ABOUT US

SWISS BASED LIGHTING COMPANY

Founded in 2016 by a group of young entrepreneurs and engineers

Specialized in the production and marketing of modern lighting fixtures for the commercial space



sales@framelight.com.au | framelight.com.au

**“WE COMBINE ELEGANT
AND TIMELESS DESIGN
WITH SUPERIOR
PERFORMANCE AT AN
ATTRACTIVE PRICE /
VALUE RATIO.”**

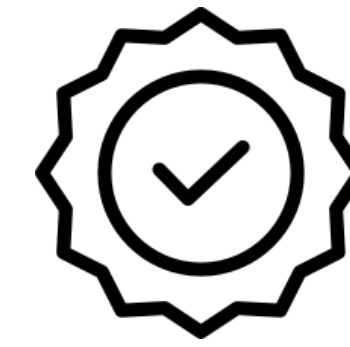
 **FRAMELIGHT**

sales@framelight.com.au | framelight.com.au



**SWISS QUALITY
STANDARDS AT
THE FOREFRONT
OF EVERYTHING
WE DO**

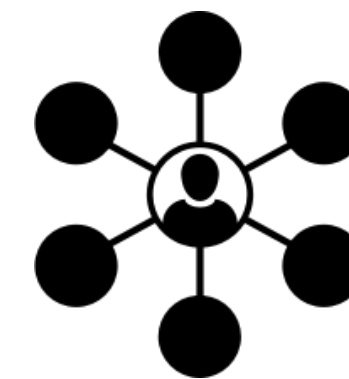
PHILOSOPHY



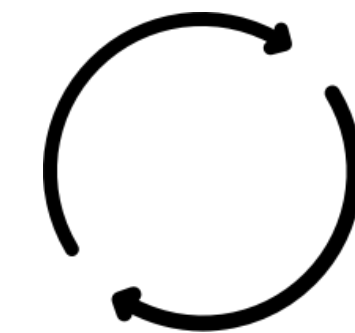
Swiss Quality



Leading Performance



Reputable People

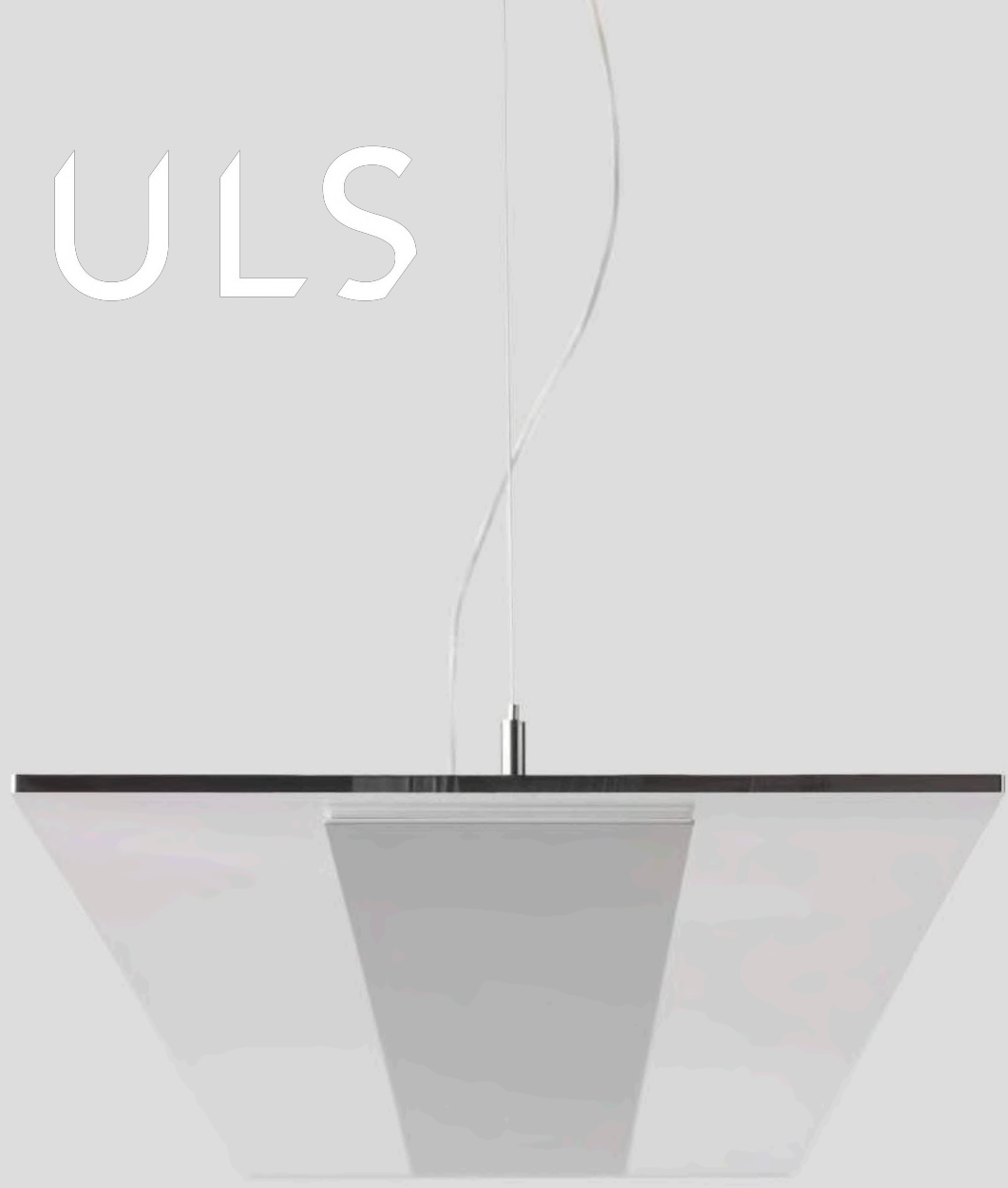


Sustainable Mindset



sales@framelight.com.au | framelight.com.au

ULS



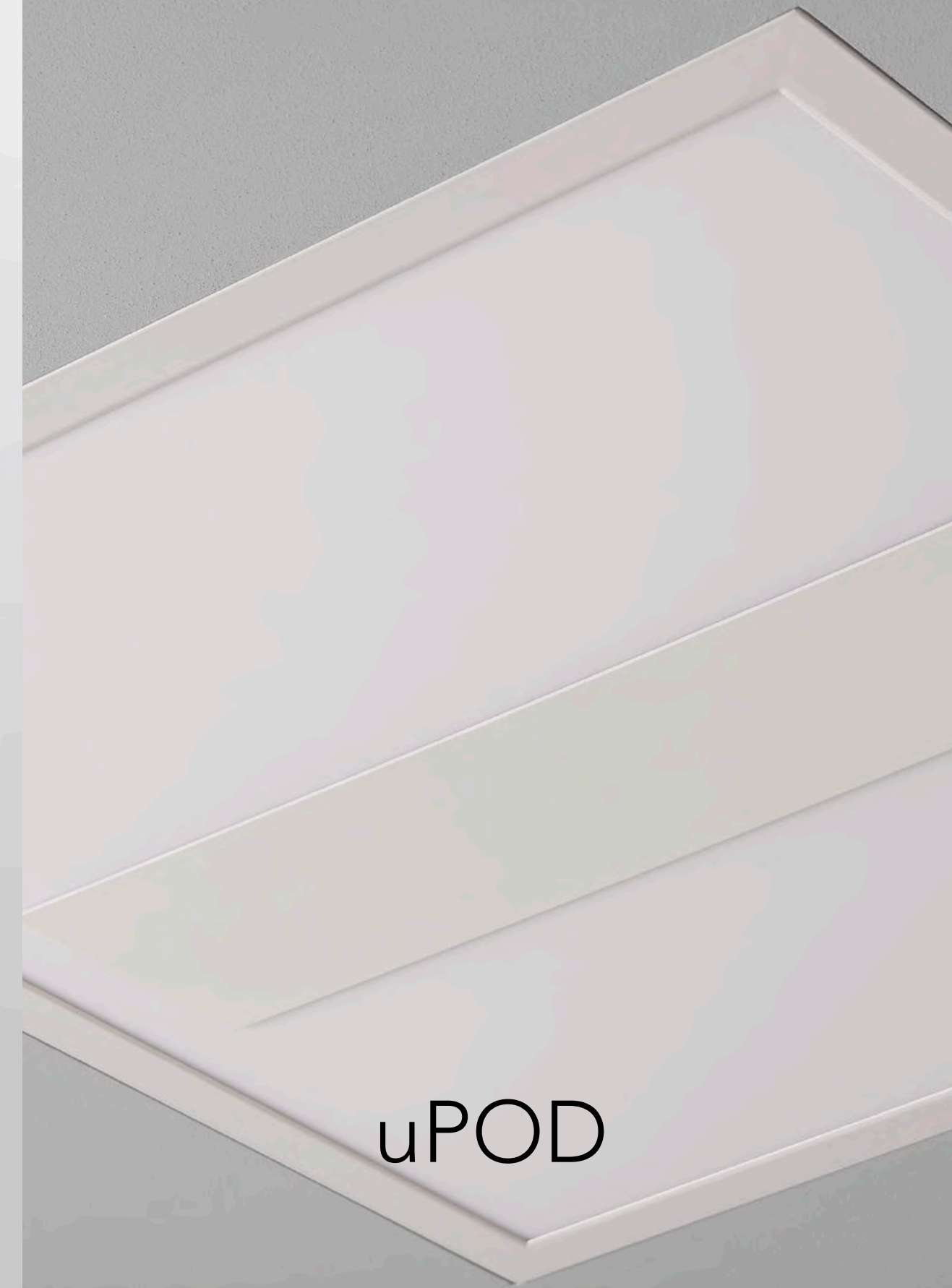
ISLAND



uLINE



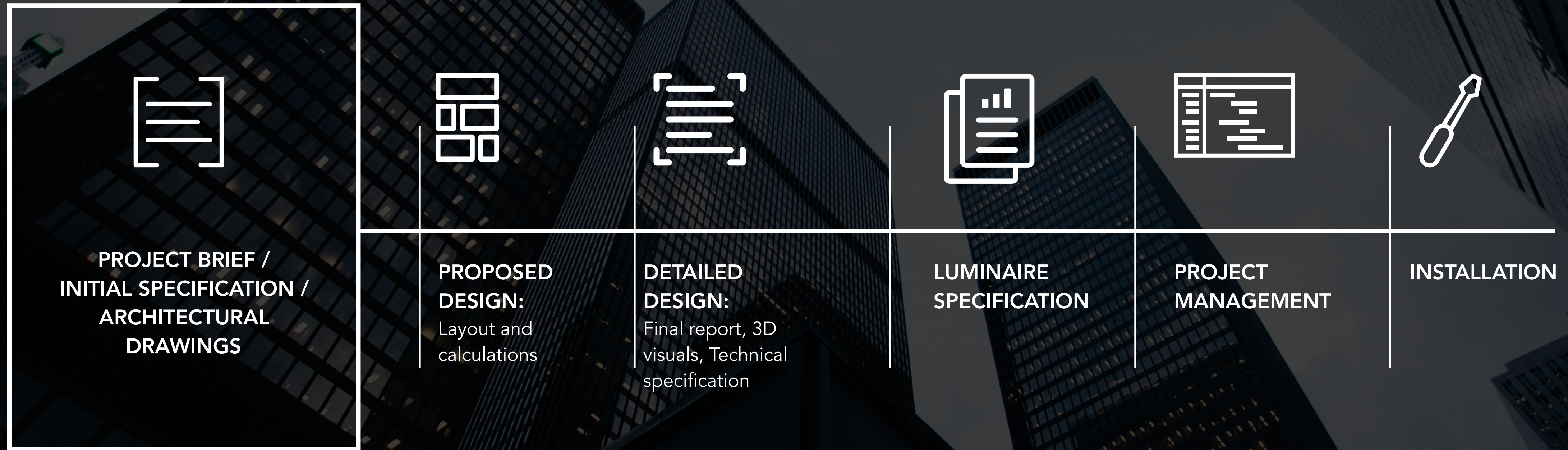
uDISC



uPOD

 FRAMELIGHT

sales@framelight.com.au | framelight.com.au



MEET OUR TEAM



Abdulrahman Sawedeg

Managing Director

Abdulrahman is the Chairman and Managing Director of ULS. He has developed and managed numerous projects in the Middle East and North Africa.



Lorenzo Graf

Director, Sales & Marketing

Head of Sales & Marketing at ULS. Successfully acquired and implemented infrastructure & software in numerous stadiums / venues throughout DACH, Eastern Europe and the Middle East. Including the largest stadia in the German Bundesliga.



Iain Macrae

Technical Consultant

Considered one of the EU's leading lighting professionals. Iain has lit up some great projects over his career including the largest UK stadia, London airports, major hospitals schools, offices and power stations.



Simon Fischer

Lighting Engineer

Multiple award winning lighting designer. Simon is one of the most respected product designers of light fixtures globally. His designs have lit amazing spaces and are used throughout the globe.



Matt Free

Lighting Engineer

Multiple award winning lighting designer. Matt has outstanding knowledge of the design and engineering of luminaries, along with the manufacturing techniques up to mass produced product lines.



Dan Wilson

Project Manager

Industry recognized lighting consultant and project manager. Dan has extensive knowledge of all market sectors - his compliant designs have been the basis for many high profile projects.



sales@framelight.com.au | framelight.com.au

FOCUSING WHERE THE BIG PLAYERS STOP

- Superior performance
- Maximum efficiency at the lowest energy expenditure
- Competitive price / value ratio
- Reduced total cost of ownership
- Ease in tendering, ordering, installation & maintenance.
- High level of service for small projects - customization upon small MoQs
- Best-in-industry components, manufacturers, engineers and lighting designers

ULS

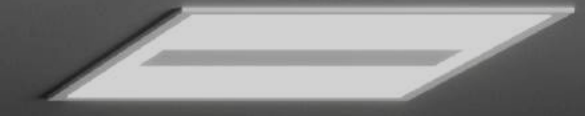
LIGHTING IS MORE THAN ILLUMINATION.

**IT STIMULATES CREATIVITY, ALERTNESS & PERFORMANCE
WHILE ENRICHING HUMAN HEALTH & WELL-BEING.**

**IT IS THE MOST COST-EFFECTIVE SOLUTION TO CREATING
A HIGH PERFORMANCE WORK ENVIRONMENT.**

 **FRAMELIGHT**

sales@framelight.com.au | framelight.com.au



DESIGN CONSISTENCY

- LED at the core
- Consistent design features
- Minimal height
- Ease of installation
- Reduced component count
- Designed for a circular economy

ULTIMATE QUALITY

- Optics
- LED
- Drivers
- Materials
- Manufacturing
- Award winning
- Design team

EXCEPTIONAL PERFORMANCE

Light Quality:

- High Color Rendering
- Color Temperature
- Glare controlled

Flicker minimized

Efficiency:

Lumens / Watt

FLEXIBILITY

- Color
- Size
- Control Options
- Ceiling integration
- Photometric Distribution
- Smart Lighting



ISLAND



 FRAMELIGHT

sales@framelight.com.au | framelight.com.au



ISLAND overview

Installation

1250x300mm 1.0m Suspension Wire

Colour Temperature

3000K

4000K

TW - 2700-6500K

Lumens

6500lm - 90 CRI

5000lm - 90 CRI

5000lm - 97 CRI

Finish

Silver RAL9007 - standard

White RAL9016

Black RAL 9005

All other finishes available upon request

Driver

DALI Integral (DA)

Wireless Integral (BT)

Also available upon request:

DALI Remote (DR)

Wireless Remote (BR)

DALI Remote Surface (DS)

Wireless Remote Surface (BS)



uLINE

 FRAMELIGHT

sales@framelight.com.au | framelight.com.au



uLINE overview

Installation

1255x250mm:
Suspended 1.0m Direct
Semi-Recessed Direct
Surface Mounted Direct
Suspended 1.0m Indirect
Semi-Recessed Indirect
Surface Mounted Indirect

Colour Temperature

3000K
4000K
TW - 2700-6500K

Lumens

6500lm - 90 CRI
5000lm - 90 CRI
5000lm - 97 CRI

Finish

Silver RAL9007 - standard
White RAL9016
Black RAL 9005
All other finishes available upon request

Driver

DALI Integral (DA)
Wireless Integral (BT)
Also available upon request:
DALI Remote (DR)
Wireless Remote (BR)
DALI Remote Surface (DS)
Wireless Remote Surface (BS)



uDISC



 FRAMELIGHT

sales@framelight.com.au | framelight.com.au



uDISC overview

Installation

Suspended 1.0m Direct
Semi-Recessed Direct
Surface Mounted Direct
Suspended 1.0m Indirect
Semi-Recessed Indirect
Surface Mounted Indirect

Colour Temperature

3000K
4000K

Lumens

2000lm - 90 CRI
2000lm - 97 CRI

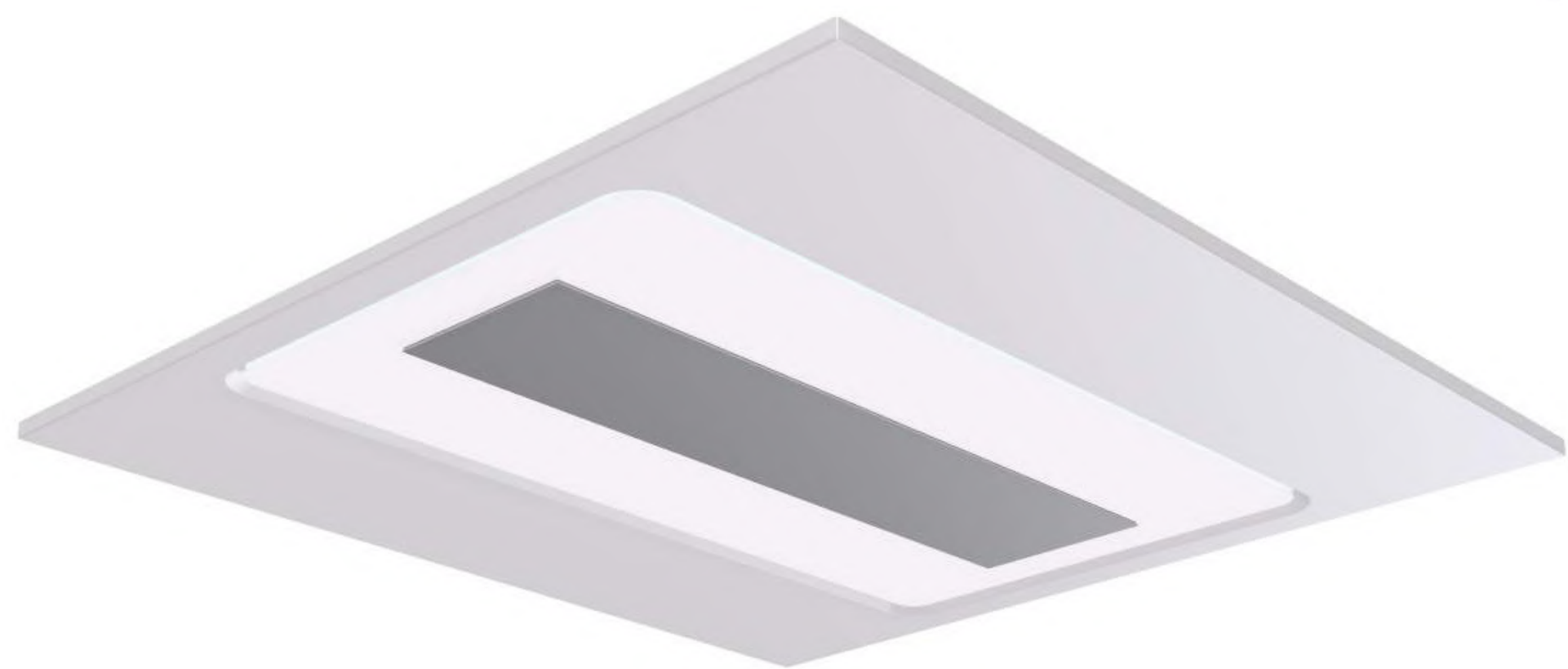
Finish

Silver RAL9007 - standard
White RAL9016
Black RAL 9005
All other finishes available upon request

Driver

DALI Integral (DA)
Wireless Integral (BT)
Also available upon request:
DALI Remote (DR)
Wireless Remote (BR)
DALI Remote Surface (DS)
Wireless Remote Surface (BS)

uPOD



 **FRAMELIGHT**

sales@framelight.com.au | framelight.com.au

uPOD overview

Installation

600mm x 600mm
1200mm x 600mm
600mm x 300mm
1200mm x 300mm
750mm x 300mm
1500mm x 300mm
(Custom Sizes & Lumen
Packages Available Upon
Request)

Recessed Island
Recessed uLine

Colour Temperature

3000K
4000K
2700-6500K (TW)

Lumens 90 CRI
3500lm - 97 CRI

Finish

Silver RAL9007 - standard
White RAL9016
Black RAL 9005
All other finishes available upon
request

Driver

DALI Integral (DA)
Wireless Integral (BT)
Also available upon request:
DALI Remote (DR)
Wireless Remote (BR)
DALI Remote Surface (DS)
Wireless Remote Surface (BS)



Thank you

Please contact us if you have any questions at:
sales@framelight.com.au



sales@framelight.com.au | framelight.com.au