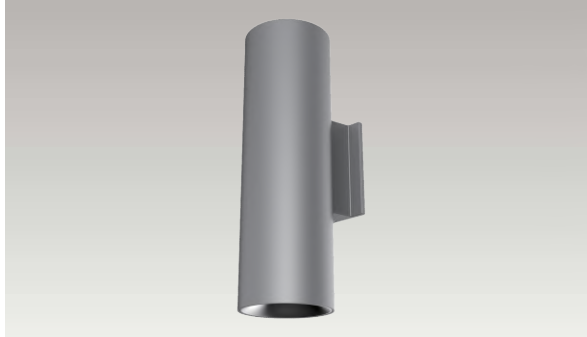


Lance 6 - White Up / Down



High Performing Outdoor Luminaire

Built to last, the Lance 6 is a 6-inch round outdoor wall mount cylinder with a combined lumen package range from 5,322 lm to 10,018 lm. Available in a variety of configurations, this IP 65 rated luminaire has W+RGB color tuning technology to make a bold architectural statement.

Quantity	Type
Project	Note

Electrical System

- 6010 lm (60W) Uplight: 30W / Downlight: 30W
- 8014 lm (80W) Uplight: 30W / Downlight: 50W
- 10018 lm (100W) Uplight: 50W / Downlight: 50W
- Power Input: Universal (120-277V)
- Operating Temperature: 14°F~104°F
- Surge Protection: 2.5KV

LED Technology

- 2700K, 3000K, 3500K, 4000K, NA (Sodium)
- 85 CRI, 93 CRI
- Beam Angle:
 - Down: 40°, 60°, WD
 - Up: 40°, 60°, WD
- Rated Life > 60,000 Hours (L70)

Advanced Dimming

(Proprietary VX Driver is incorporated to all dimming options for video flicker-free lighting)

- Standard 0-10V: dims to 10%
 - Single Dimming (Controls Up/Down Together)
 - Dual Dimming (Controls Up/Down Separately)
- Superior 0-10V: dims to 1%
 - Single Dimming (Controls Up/Down Together)
 - Dual Dimming (Controls Up/Down Separately)
- DMXS: high resolution dims to 0.1%
 - Supports ANSI E1.20 RDM protocol
 - Controls Up/Down Separately

Housing

- Diameter: 6.37" (162mm)
- Height: 20" (508.5mm / 50W), 22" (558.8mm / 100W)
- Material: Aluminum
- Weight: 15.2 lbs / 50W, 16.7 lbs / 100W

Warranty

- 5 year limited warranty

Listing

- ETL Wet Location Listed
- IP65



*METEOR LIGHTING reserves the right to make changes to this product at any time without prior notice and such modification shall be effective immediately.

Lance 6 - White Up / Down



How To Specify:

Ordering Example: LA6-60-408-UNV-SPVS-4040-BLK

4-5 weeks lead time on over 75% of specifications.

Model	Wattage	CCT / CRI	Voltage
LA6			UNV
LA6	60 Downlight: 30W Uplight: 30W	278 2700K / CRI85	UNV 120-277V
Lance6	80¹ Downlight: 50W Uplight: 30W	308 3000K / CRI85	
	100¹ Downlight: 50W Uplight: 50W	358 3500K / CRI85	
		408 4000K / CRI85	
		279 2700K / CRI93	
		309 3000K / CRI93	
		359 3500K / CRI93	
¹ Option not compatible with DMX. NOTE: Contact Factory for only downlight option			

Dimming	Beam Angle	Color	Finish	Accessories
NOD Non-Dimming	Downlight	BLK Black	STD Standard	FW¹ Forward Throw
STVS Standard 0-10V dims to 10% Single (Up/Down Together)	40 40 60 60 WD¹ WIDE	WHT White	NAT Natatorium Rated	WW¹ Wall Wash 20°
STVD Standard 0-10V dims to 10% Dual (Up/Down Separately)		GRY Gray	MAR Marine Finish	LL¹ Linear Lens
SPVS Superior 0-10V dims to 1% Single (Up/Down Together)	Uplight	BRZ Bronze		HC² Honeycomb Louver
SPVD Superior 0-10V dims to 1% Dual (Up/Down Separately)	40 40 60 60 WD¹ WIDE			
DMXD DMX dims to 0.1% Dual (Up/Down Separately)				
	¹ Please factor in change in lumen output of -12%			¹ Please factor in change in lumen output of -20% ² Please factor in change in lumen output of -30%. Honeycomb Louver applicable only to downlight.

Lance 6 - White Up / Down



Delivered Lumens*

Wattage \ CCT	60W		80W		100W	
	UP (30W)	DOWN (30W)	UP (30W)	DOWN (50W)	UP (50W)	DOWN (50W)
4000K	3005 lm	3005 lm	3005 lm	5009 lm	5009 lm	5009 lm
3500K	2960 lm	2960 lm	2960 lm	4933 lm	4933 lm	4933 lm
3000K	2890 lm	2890 lm	2890 lm	4810 lm	4810 lm	4810 lm
2700K	2661 lm	2661 lm	2661 lm	4435 lm	4435 lm	4435 lm

Current Consumption

Wattage \ Volt	120V	277V
60W	0.55A	0.24A
80W	0.73A	0.32A
100W	0.92A	0.40A

*Tolerance±8%

DMX Requirements*

Each Lance 6 DMX unit has TWO CHANNEL per fixture (1 to control uplight, 1 to control downlight). Fixture will be controlled by DMX number controlling intensity. We do not recommend more than 32 fixtures per DMX daisy chain. When placing order, please indicate DMX address (refer to DMX Address example below). DMX address will be listed on the back of each fixture.

Fixture	DMX Address	
	Uplight (ex. X)	Downlight (ex. X+1)
#1	1	2
#2	3	4
#3	5	6

- The LED fixture will have 2 DMX positive / Negative wires for connection.
- The final fixture should be terminated by the use of DMX Terminator (by others).

Dimensions

