

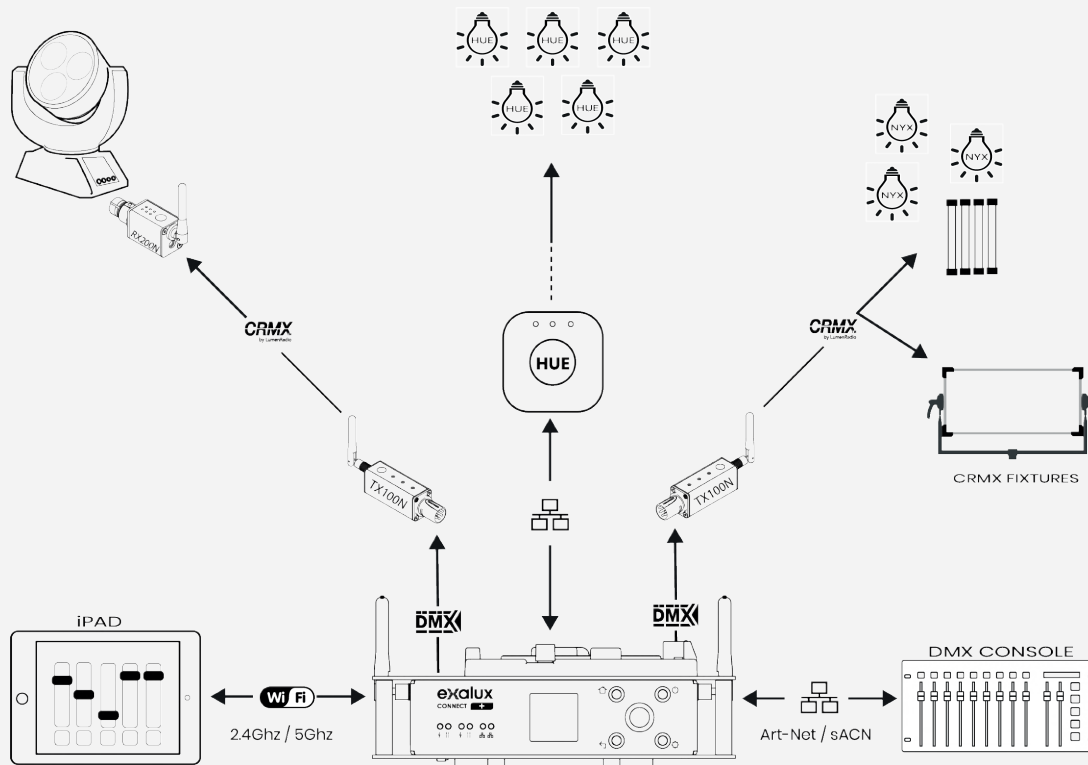
# CONNECT+

EXALUX™ CONNECT+ is a dual band Wi-Fi Art-Net to DMX gateway (converter) that Allows wireless lighting control via Art-net compatible App.



CONNECT+ is compatible with the most of DMX Apps (BlackOut, DMX Connect+, Luminair)..

**CONNECT +** features a dual band MiMo Wi-Fi enables to be use close to CRMX transmitters. The unit can be powered in different ways, either by a V-LOCK battery, an external DC power supply, or by the RJ45 port and an external PoE injector.



**CONNECT +** features the new PoD (Power over DMX) technology that makes it possible to directly power the PoD-compliant equipment via the XLR connector.

## PARTS & ACCESSORIES

CONNECT + BASIC	CNT.003.001
DIRECTIONAL ANTENNA	ACC.000.012
D-TAP TO DC JACK CABLE	COR.001.025
USB-A TO DC JACK CABLE	COR.001.026

## CONNECT+ ADVANTAGES

- Built-in dual band Wi-Fi MiMo access point
- Built-in dual universe DMX node
- Built-in DMX recorder
- Expandable via the Connect Extension Port
- Firmware upgrade through USB port
- Multiple power supply possibilities
- Power over DMX (PoD) capability on DMX outputs

## CONNECT+ BENEFITS

- Reliable 2.4 & 5GHz Wi-Fi
- Wi-Fi Band & channel selection
- Multiple uses (DMX gateway, Recorder)
- Long time running on a standard V-LOCK battery
- HUE ready thanks to the Ethernet ports
- Allows to manage up to 1024 DMX channels
- Remotely powered thanks to the PoE-PD

## FEATURES

<b>Network</b>	Wi-Fi (2.4GHz) / Wi-Fi (5.0GHz) / Ethernet 10/100Mbps
<b>Protocol</b>	Supports Art-Net 1/2/3, Streaming ACN sACN
<b>Power</b>	DC.Jack, V-Lock battery, PoE-PD, PoD-PSE Output
<b>Interface</b>	Colour TFT display (/w buttons), LED indicators, backlit buttons
<b>Others</b>	Basic recorder (onboard card) Backup/restore settings (USB flash drive) Display backlight settings (level & screen saver), Security restrictions (pin code protected) Firmware upgrade via USB flash drive (not provided)

## TECHNICAL SPECIFICATIONS

<b>Power Connection</b>	2.1x5.5MM DC jack / V-Lock / PoE (Eth.2)
<b>Power Consumption</b>	12W max (20W max with extension)
<b>Housing / Mounting</b>	Aluminium, black painting, magnetic rubber feet / M10
<b>IP Rating</b>	IP20
<b>Certifications</b>	CE, RoHS
<b>Weight</b>	890g

## WIRELESS INTERFACE

<b>Standard</b>	Wi-Fi IEEE 802.11 a/b/g/n Bluetooth Classic 4.2 Bluetooth Low Energy
<b>Frequency</b>	Wi-Fi : 2.412 ~ 2.484 GHz (13 ch) Wi-Fi : 5.180 ~ 5.845 GHz (35 ch) Bluetooth : 2.402 ~ 2.480 GHz
<b>Antenna</b>	Whip hinged antenna, 50Ω, female RP-SMA (x2)
<b>RF Output / Sensitivity</b>	Wi-Fi : 17 dBm Bluetooth : 20dBm
<b>Range</b>	Wi-Fi (2.4GHz) : ~100m Wi-Fi (5GHz) : ~50m BT : ~10m

## DMX INTERFACE

<b>Protocol</b>	DMX512-A
<b>Universe Support</b>	2 (one per output)
<b>DMX Frame Rate</b>	0,8-830Hz
<b>End to End Latency</b>	< 5ms
<b>DMX Outputs</b>	Neutrik XLR 5 pins Female (2)

## POWER

<b>DC Jack</b>	5~28V <sub>DC</sub>
<b>V-Lock</b>	14.4-14.8VDC~26V <sub>DC</sub>
<b>PoE-PD</b>	48V <sub>DC</sub> IEEE 802.3af-2002 Type 1 13W

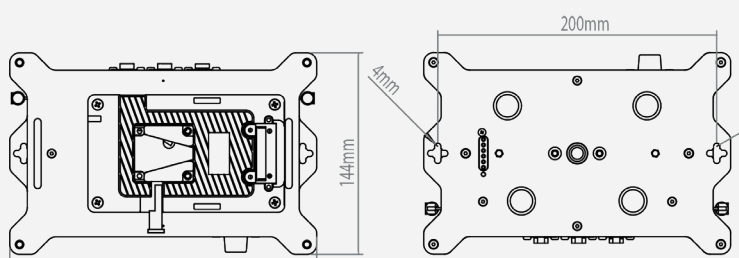
## ETHERNET INTERFACE

<b>Standard</b>	IEEE 802.3 10/100 Mbps
<b>Ports</b>	RJ45 8P/8C (1), Neutrik EtherCON (1)

## USB INTERFACE

<b>Standard</b>	USB 2.0 Hi-Speed
<b>Ports</b>	USB-A Host (1), charging CDP USB-A 0.5A (2),
<b>Extension</b>	+5VDC, USB Host (2), 6-position spring-loaded connector

## DIMENSIONS



## OPERATING CONDITIONS

	Min	Typ	Max	
<b>Storage T°</b>	-30		+80	°C
<b>Operating T°</b>	-20	25	+70	°C

