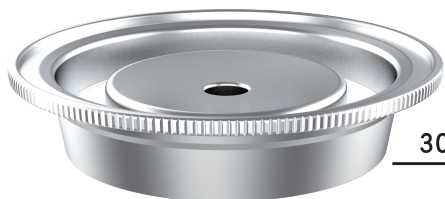




Stainless Steel Nespresso Vertuoline Capsule Instruction

STRUCTURE



304 stainless steel lid



coffee powder (not included)



304 stainless steel cup

► How to clean the capsule ◀

STEP1 Take out the capsule ,open the lid and pour used coffee powder into the garbage

STEP2 Rinse the capsule in clear water and brush the mesh hole lightly

STEP3 Put the washed capsule in place and keep them dry

► Specification ◀

Dimension: 2.24x1.38x1.18 inch

Weight: 41g

Coffee capacity: 9g

Coffee Grounds Size: extra fine / fine / medium size coffee

Dishwasher or disinfection cabine: dishwasher -No
disinfection cabinet: disinfection cabinet-Yes

Compatible Machine: Nespresso vertuoline GCA1
Delonghi ENV135S

► Usage Tips ◀

STEP1 Take the capsule, twist-off the lid



Use the spoon to fill the coffee powder into the capsule and use a coffee tamper / spoon to press the coffee powder slightly.

STEP2



STEP3 Put the lid back and tighten coffee capsules



Put the capsule into the compatible machine.

STEP4



STEP5 Power on the machine to brew coffee/tea.