



Lexus LX470 (2003-2006)
Toyota Land Cruiser (2003-2006)

PART NUMBER: TY-71-03-L



PLEASE READ COMPLETE INSTRUCTIONS BEFORE INSTALLING THIS Pro.Fit Legend.

All instructions assume a drivers seat vantage point. Caution is advised when removing and reassembling wood or plastic parts of a dash. Applying unnecessary force or pressure may cause a piece to crack or break.

TOOLS REQUIRED: Dash Trim Removal Tool, 5/64" drill bit and drill, # 2 Phillips screwdriver

PARTS INCLUDED: Pro.Fit Legend, instructions, two (2) #8 x 1/2" screws

LOCATION: Right of radio

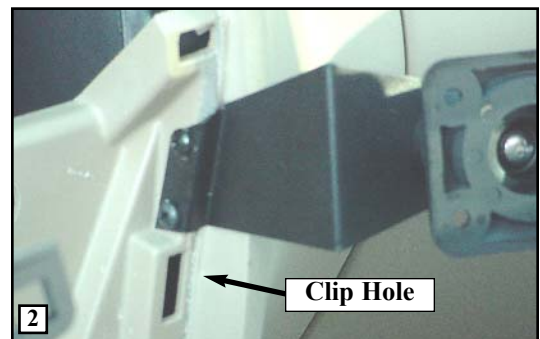
STEP 1.

Insert the dash trim removal tool behind the lower-right corner of the radio trim bezel. **(Photo 1.)** Pry outward to release a retainer clip. Work the tool clockwise around the bezel until all clips are released. Disconnect wiring harnesses to bezel and set bezel aside.



STEP 2.

Place the bottom corner of the Legend on top of clip hole. **(Photo 2.)** Hold the Legend against the dash pad and using it as a guide, mark the location of two (2) screw holes. Set Legend aside. Drill two (2) pilot holes at the marked location using a 5/64" drill bit and drill. **Note: Use caution while drilling the holes, making sure the drill chuck does not scratch the radio as it spins.** Align the Legend over the pilot holes, insert two (2) # 8 x 1/2" screws and tighten.



STEP 3.

Re-assemble the dash in reverse order remembering to reconnect wiring harnesses to radio bezel. This completes the installation of your Legend.



Pro.Fit International, Inc.® may not be held liable for any damage to a vehicle before, during or after the installation or removal of this Pro.Fit Legend. Pro.Fit may not be held liable for any personal injury resulting from accident or improper installation. Pro.Fit International, Inc.® 1335 Eagandale Court, Eagan, MN 55121, Ph: 651-688-3588 or 800-388-0073 Fx: 651-688-9876

Installation Difficulty

 Simple Advanced

© Pro.Fit International, Eagan, MN 2006

VIEW INSTRUCTIONS & UPDATES
 ONLINE @
WWW.PRO-FIT-INTL.COM