

# Dodge Journey 2012-2017

## PART NUMBER: SC-51-05-L

**\*PLEASE READ COMPLETE INSTRUCTIONS BEFORE INSTALLING THIS VSM G3\***

All instructions assume a driver's seat vantage point. Caution is advised when removing and reassembling wood or plastic parts of a dash. Applying unnecessary force or pressure may cause a piece to crack or break.

When properly installed, the metal between the ball and the small hole is all that is exposed. (Some exceptions apply).

**TOOLS REQUIRED:** Dash Trim Removal Tool (DTRT), Electric Screw Driver OR Cordless Drill, T-15 Torque Screw Head

**PARTS INCLUDED:** VSM G3, A Plate, 2-#8 x 3/8"

**LOCATION:** Right of Radio

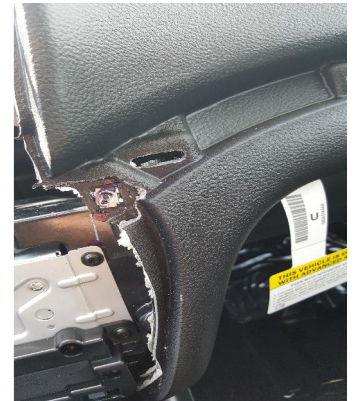
Step 1: Locate the single trim piece that goes from the radio to the steering wheel. Use your DTRT to pop this piece's retaining clips to remove it. On the right side, use your DTRT to pop loose only half way as you do not need to completely remove it.

Step 2: Remove the two torque screws found behind the trim. After the screws are removed, you can pop the climate control system loose to move it out of the way.

Step 3: Grab from the bottom of the screen and lift up to pop the retaining clips out. The entire bezel, screen and vents will pop out. Unplug the wires from the back of the screen and set entire bezel aside.

Step 4: Align the VSM G3 on the right side below the retainer clip slot for the screen. Using the G3 as a guide, mark the location of 2 screw holes. Set G3 aside. Drill 2 pilot holes at the marked location using a 5/64" drill bit and drill. Align the G3 over the pilot holes insert the 2 screws provided.

Step 5: Plug wires back into the original location on the back of the screen. The top of the bezel will need to be inserted first before you can pop the retainer clip in from the side. Return the climate control system. Return the two screws to their location and then pop the trim back on.



Pro.Fit International, Inc. ® may not be held liable for any damage to a vehicle before, during, or after the installation or removal of this VSM G3. Pro.Fit International may not be held liable for any personal injury resulting from accident or improper installation.

Pro.Fit International, Inc. ® 221 1<sup>st</sup> Street South, Montgomery, MN 56069, Ph: 507.364.7773 or 800.388.0073

### Installation Difficulty



Simple

Advanced

©Pro.Fit International, Inc. Montgomery, Minnesota 2017

[View Instructions &  
Updates Online at  
www.pro-fit-intl.com](http://www.pro-fit-intl.com)