



MERCEDES
GL320, GL450 (2006-2011)
ML320, ML350, ML550 (2006-2011)



PART NUMBER: MV-50-03-G3

PLEASE READ COMPLETE INSTRUCTIONS BEFORE INSTALLING THIS VSM G3

All instructions assume a drivers seat vantage point. Caution is advised when removing and reassembling wood or plastic parts of a dash. Applying unnecessary force or pressure may cause a piece to crack or break.

**When properly installed, the metal between the ball and 2 small holes is all that is exposed.
 (Some exceptions apply).**

TOOLS REQUIRED: 5/64" drill bit and drill, marking pen, Phillips screwdriver, Dash Trim Removal Tool (DTRT)

PARTS INCLUDED: VSM G3, A Plate, J Stem, two (2) #8 x 1/2" screws

LOCATION: Right of Radio

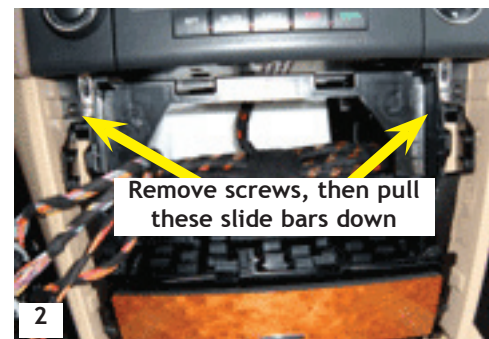
STEP 1. Using your hands, unlatch the climate control panel by pulling carefully out from the bottom releasing two (2) retainer clips. Shown in Photo #1. Once released, tilt the panel up, and then angle it out and down. Pull the panel out and simply let the bezel hang off to the side. Do NOT disconnect wiring.

STEP 2. Remove two (2) T20 torque screws located directly below the radio. See Photo #2. These screws secure the slide bars that must be pulled down in order to unlock the radio. Simply use a tool or your fingers to push the two (2) slide bars down as far as possible. Begin to pull the radio straight out from the bottom. Once the radio display has been removed, let it hang carefully off to the left.

STEP 3. Place the VSM G3 in place exactly as shown in Photo #3. Use the VSM G3 as a guide and mark the locations of the pilot holes using a marking pen. With a 5/64" bit and drill, drill out the marked locations only 1/8" deep. Drill only deep enough to allow the #8 x 1/2" screw to get started. Use a Phillips screw driver to tighten both screws over the VSM G3 the rest of the way.

STEP 4. Once the VSM G3 is in position and flush to the dash molding, begin to place the dash back together in the opposite manner in which it was dismantled. You have successfully installed your VSM G3.

Note: See the Assembly Instructions for G3 Components for additional information.



Pro.Fit International, Inc.® may not be held liable for any damage to a vehicle before, during or after the installation or removal of this VSM G3™. Pro.Fit International may not be held liable for any personal injury resulting from accident or improper installation. Pro.Fit International, Inc.® 314 West 86th Street Bloomington, MN 55420
 Ph: 952.641-4700 or 800.388.0073 Fx: 952.641.4701

Installation Difficulty
 ● ● ● ○ ○
 Simple Advanced

© Pro.Fit International, Eagan, MN 2008

[View Instruction & Updates
 Online at
 www.pro-fit-intl.com](http://www.pro-fit-intl.com)