



LINCOLN NAVIGATOR (2003-2006)

(See other side for LINCOLN AVIATOR 2003-2006)

PART NUMBER: LC-70-03

PLEASE READ COMPLETE INSTRUCTIONS BEFORE INSTALLING THIS Pro.Fit VSM®.

All instructions assume a drivers seat vantage point. Caution is advised when removing and reassembling wood or plastic parts of a dash. Applying unnecessary force or pressure may cause a piece to crack or break.

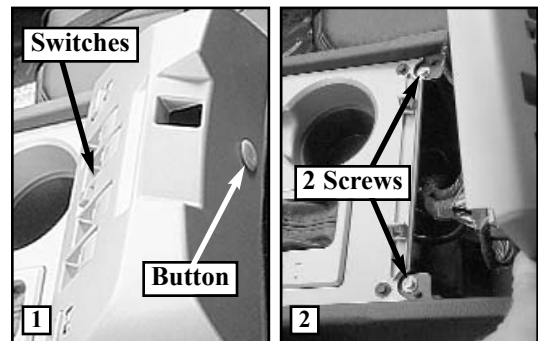
Pro.Fit logo and part number will be right side up and readable when installed.

TOOLS REQUIRED: # 2 Phillips screwdriver, hook tool, 5/64" drill bit and drill, marking pen.

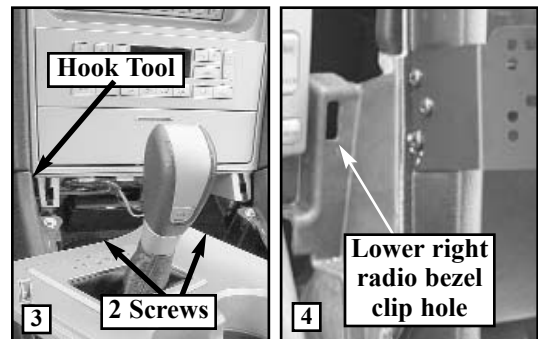
PARTS INCLUDED: Pro.Fit VSM®, three (3) # 8 x 1/2" screws, instructions.

LOCATION: Right of radio.

STEP 1. Apply the emergency brake and put the gear shift into neutral. Open the center console arm rest, located behind the gear shift. There is a small button that has a push pin in its center. **(Photo 1).** Push the pin in with a small pointed object such as a pen. This will release the retainer clip that holds the window switch panel in place. Lift the panel off, disconnect the wiring and set aside. Remove the two (2) 7mm screws from underneath the switch panel. **(Photo 2).** Work your hands or a hook tool around the gear shift bezel until two (2) retainer clips, front left and right, are released.



STEP 2. With the gear shift bezel turned slightly clockwise, remove the two (2) 7mm screws from the back of the cavity directly below the ashtray. **(Photo 3).** The next step requires extreme caution to avoid damage to the bezel. Insert a hook tool behind the lower left corner of the radio trim bezel. The bezel has four retainer clips, one on each side of the air vents, and one on each side of the numbered radio push buttons. Work the hook tool around the bezel to release all the clips. Disconnect the wiring and set the bezel aside.

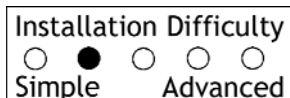


STEP 3. Align the Pro.Fit VSM® against the dash pad as shown in photo 4. Using the VSM® as a guide, mark the location of the three (3) mounting holes. Set the VSM® aside. Using a 5/64" drill bit and drill, drill three (3) 1/2" pilot holes at the marked locations. Position the VSM® over the pilot holes, insert three (3) # 8 x 1/2" screws and tighten. Reassemble the dash in reverse order. Place the gear shift into park and release the emergency brake.



This completes the installation of your Pro.Fit VSM®.

Pro.Fit International, Inc.® may not be held liable for any damage to a vehicle before, during or after the installation or removal of this Pro.Fit VSM®. Pro.Fit may not be held liable for any personal injury resulting from accident or improper installation. Pro.Fit International, Inc.® 1335 Eagandale Court, Eagan, MN 55121, Ph: 651-688-3588 or 800-388-0073 Fx: 651-688-9876



© Pro.Fit International, Eagan, MN 2005





LINCOLN AVIATOR (2003-2006)

(See other side for LINCOLN NAVIGATOR 2003-2006)

PART NUMBER: LC-70-03

PLEASE READ COMPLETE INSTRUCTIONS BEFORE INSTALLING THIS Pro.Fit VSM®.

All instructions assume a drivers seat vantage point. Caution is advised when removing and reassembling wood or plastic parts of a dash. Applying unnecessary force or pressure may cause a piece to crack or break.

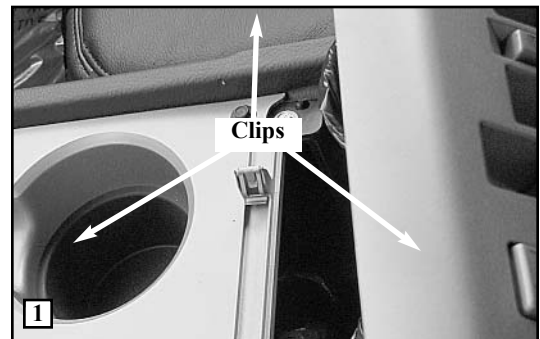
Pro.Fit logo and part number will be right side up and readable when installed.

TOOLS REQUIRED: # 2 Phillips screwdriver, 5/64" drill bit and drill, Dash Trim Removal Tool (DM-40-22), marking pen, 7mm nut driver.

PARTS INCLUDED: Pro.Fit VSM®, three (3) # 8 x 1/2" screws, instructions.

LOCATION: Right of air vent.

STEP 1. Locate the air vent on the top of the dash, next to the windshield. The vent has five (5) retainer clips, one (1) in each corner, and one (1) between the two corners nearest the windshield. Pry the vent upwards to release the clips with the dash trim removal tool. Set vent aside. Removing the vent will reveal two (2) 7mm bolts in the vent cavity. Remove these bolts.



STEP 2. Insert the trim tool behind the lower-left corner of the radio bezel. Pry slightly outward to release a clip. Grasp the corner of the bezel and work your hands around it, to release the remaining two (2) clips. **(Photo 1).** Set the bezel aside. Next, remove the center vent & clock assembly by prying outward with the dash trim removal tool. The center vent has four (4) clips, one in each corner. Do not disconnect any wiring to the clock.

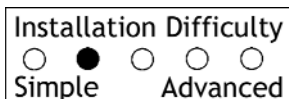


STEP 3. Rest the Pro.Fit VSM® on top of the climate control. **(Photo 2).** The back edge of the VSM® should be against the dash pad. Using the VSM® as a guide, mark the location of the three (3) mounting holes. Set the VSM® aside. Using a 5/64" drill bit and drill, drill three (3) 1/2" pilot holes at the marked locations. **Drill pilot holes ONLY 1/2" deep to avoid drilling completely through the dash pad.** Position the VSM® over the pilot holes, insert three (3) # 8 x 1/2" screws and tighten. Reassemble the dash in reverse order. Place the gear shift into park and release the emergency brake.



This completes the installation of your Pro.Fit VSM®.

Pro.Fit International, Inc.® may not be held liable for any damage to a vehicle before, during or after the installation or removal of this Pro.Fit VSM®. Pro.Fit may not be held liable for any personal injury resulting from accident or improper installation. Pro.Fit International, Inc.® 1335 Eagandale Court, Eagan, MN 55121, Ph: 651-688-3588 or 800-388-0073 Fx: 651-688-9876



© Pro.Fit International, Eagan, MN 2005

