

# Know your Miro humidifier

NR07 Series

**miro**

**User Manual**

# Thank you for purchasing Miro humidifier

Please read the user manual  
thoroughly before using the Miro humidifier.  
Please carefully read, understand,  
and follow all warnings and instructions.

The warranty information can be found in this user manual.  
please keep this user manual for future use.



Please email us at  
[support@mirohome.com](mailto:support@mirohome.com)  
if you have any questions

# Table of Contents

<b>In The Box</b>	4	<b>How to Operate Your Humidifier</b>	22
<b>Humidifier Modules</b>	5	Powering On Your Humidifier	
Miro Humidifier		Output Setting	
Main Unit		Powering Off Your Humidifier	
		Low-water level indicator	
<b>Main Unit Assembly</b>	7	<b>How to Wash Your Humidifier</b>	24
Disassembling the Main Unit		<b>Frequently Asked Questions</b>	27
Checking other modules		<b>Please Read Before Use For Your Safety</b>	32
Mist-maker placement		<b>Product Specifications</b>	35
Fan placement		<b>Warranty Disclaimer</b>	36
Cable placement		<b>Miro Customer Service (support.mirohome.com)</b>	38
Inner funnel placement			
Outer funnel placement			
Splash Guard placement			
Inner Vapor Cap placement			
<b>Miro Humidifier Assembly</b>	15		
Filling the Water Bowl			
Floating the Main Unit			
Placing the Water bowl Cover			
Placing the Noise Muffler			
Placing the Outer Vapor Cap			
Connecting the USB Cable			
Connecting the Power Cable			
Connecting your humidifier to DC Adapter			

# In The Box

Please make sure all modules are in the box.

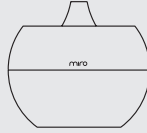
Contact [support@mirohome.com](mailto:support@mirohome.com) if any module is missing.

## Miro Humidifier

only includes the unit you purchased



NR07S



NR07G



Water Bowl Base

( NR07G Only )

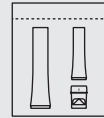
## Modules for NR07 Series



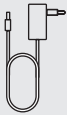
Mist-maker



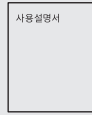
Controller



Outer Vapor Cap,  
Inner Vapor Cap,  
Splash Guard



DC Adapter











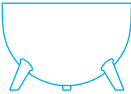




Manual

## Tip

Please make sure to separate all the modules before assembly.

# Humidifier Modules

## Miro Humidifier

	NR07S	NR07G
Outer Vapor Cap		
Noise Muffler		
Water Bowl Cover		
Main Unit (page 6 for details)		
Water Bowl		
Water Bowl Base		
Controller		

### Tip

Size and the look of each module may differ based on the model.

## Main Unit

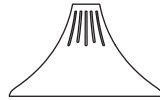
Inner Vapor Cap



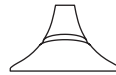
Splash Guard



Outer Funnel



Inner Funnel



Mist-maker



Floating Base



## Tip

Size and the look of each module may differ based on the model.

# Main Unit Assembly

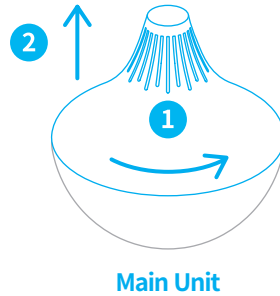
Miro  
Customer  
Care Portal



## 01. Disassembling the Main Unit

The Main Unit comes assembled. Please disassemble the main unit following these steps:

- 1 Grab the top of the Outer Funnel and twist right.
- 2 Disassemble and take apart Outer Funnel, Inner Funnel, and Floating Base.

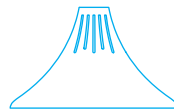


## 02. Checking other modules

Please check to see if you have all the modules.

### Tip

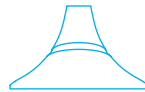
Please see page 13 for more information on inner vapor cap



Outer Funnel



Inner Vapor Cap



Inner Funnel



Splash Guard



Floating Base



Mist-maker

### 03. Mist-maker placement

Ensure the grooves of the Mist-maker line up with the positioning of the "fins" in the bottom of the floating base. The wires should maintain a 90 degree angle (see diagram 3-1).

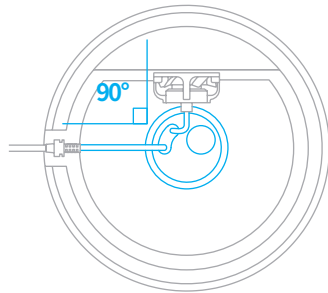


Diagram 3-1

#### Warning

The humidifier will not produce any mist if the cable wire blocks the top of the Mist-maker (ultrasonic engine). Please position it as shown in Diagram 3-1.

#### Warning

Please treat Mist-maker with care. The unit may get damaged if you pull the cable or fan too hard. Please refer to Diagram 3-2 for installation details.

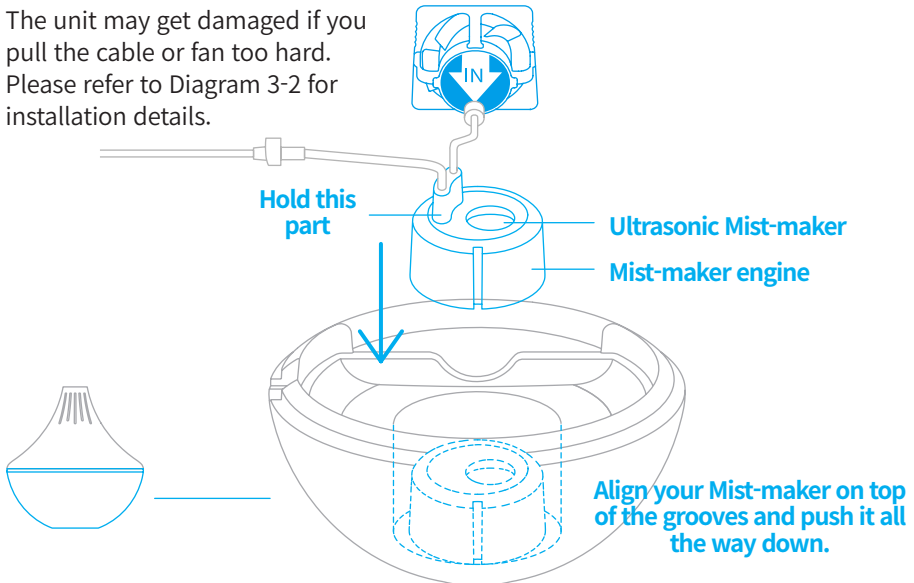


Diagram 3-2



## 04. Fan placement

Ensure that the "IN" sign is facing the Mist-maker and the arrow facing down. Click the fan inside the groove. Do not force it in. See Diagram 4-1.

### Tip

Insert the fan all the way in.  
Do not force it in.

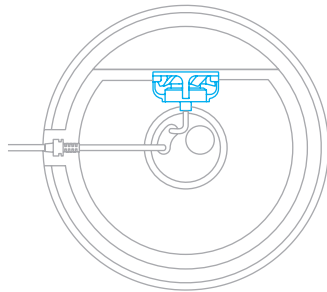
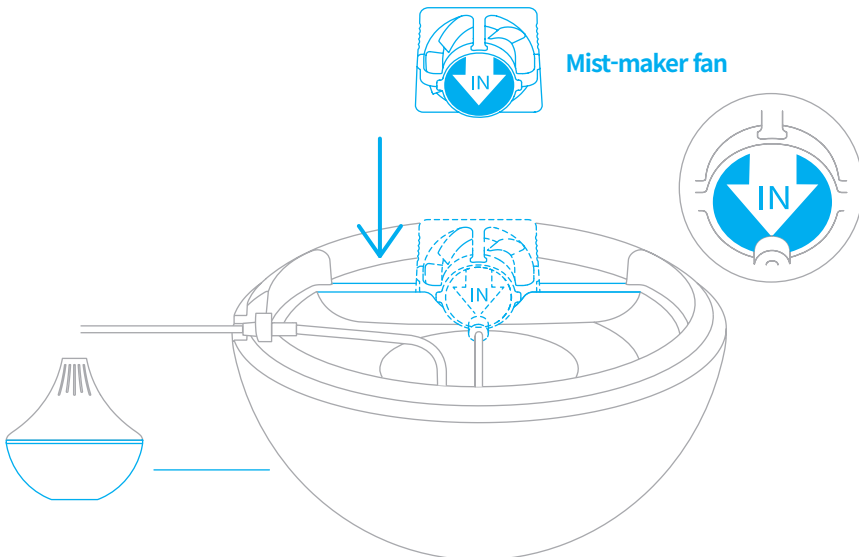


Diagram 4-1



Mist-maker fan

## 05.Cable placement

Place the rubbery edge clip part into the groove of the floating base. See Diagram 5-1.

### Warning

The humidifier may not function properly if the rubbery edge clip is not placed properly.

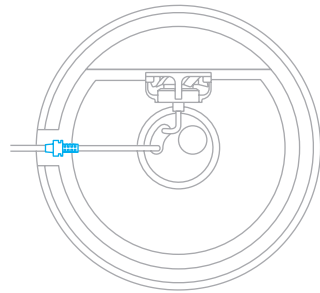


Diagram 5-1

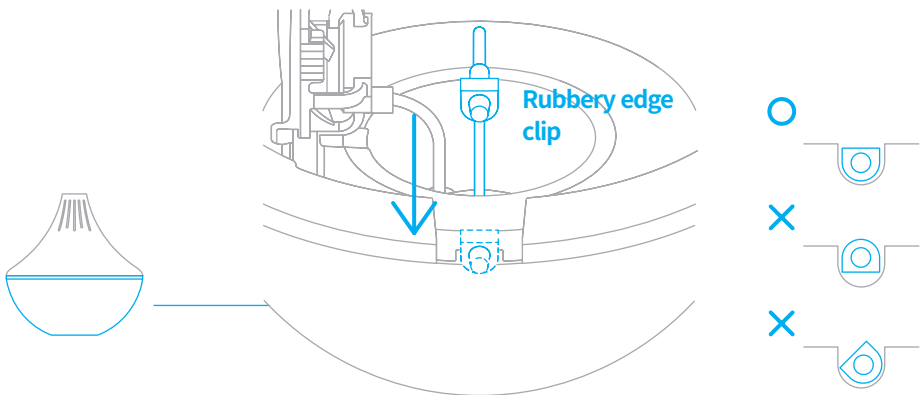


Diagram 5-2

## 06. Inner-funnel placement

Line up Inner-funnel groove on top of the fan and push it down. See Diagram 6-1.

### Warning

The humidifier may not function properly if the Inner Funnel is misplaced.

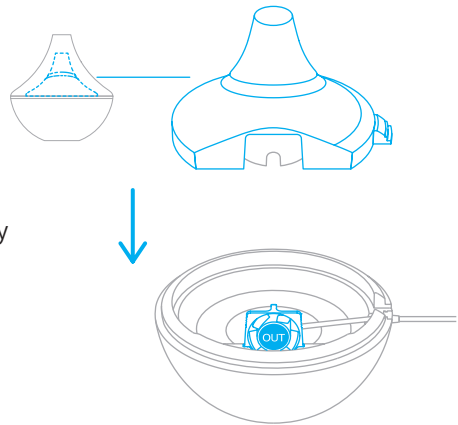


Diagram 6-1

## 07. Outer-funnel placement

- 1 Place the Outer-funnel on top of the Inner-funnel.
- 2 Gently twist the Outer-funnel to hold it into place. See Diagram 7-1 for details.

### Warning

The humidifier may not function properly if the Outer Funnel is misplaced.

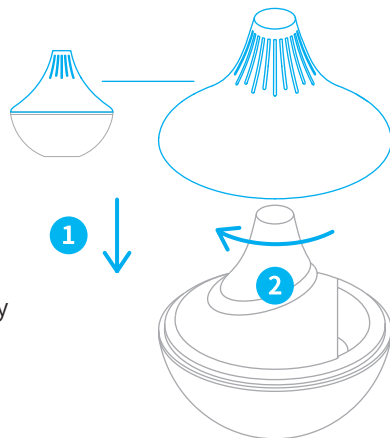


Diagram 7-1

## 08. Splash Guard placement

Optional

Locate the arrow on the Splash Guard and drop it into the funnel as shown in Diagram 8-1.

### Tip

Miro humidifier has a powerful output. You may see water condensation around the humidifier depending on the temperature and humidity of your environment.

The Splash Guard can minimize the condensation effect.

### Warning

The humidifier output may decrease slightly when using the Splash Guard.

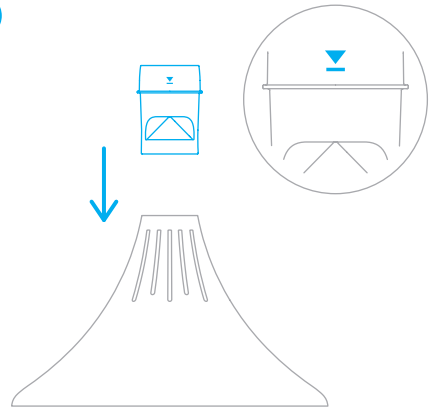


Diagram 8-1

## 09. Inner Vapor Cap placement

Click the Inner Vapor Cap into the Main Unit.

### Warning

Do NOT lift the Main Unit by holding only the Inner Vapor Cap. This may cause permanent damage.

### Warning

Please ensure to use the correct Vapor Cap. Outer Vapor Cap is translucent while the Inner Vapor Cap is not.

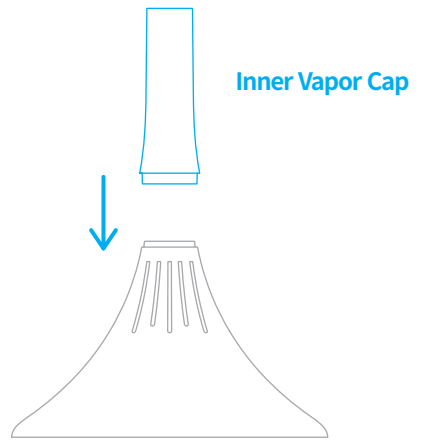
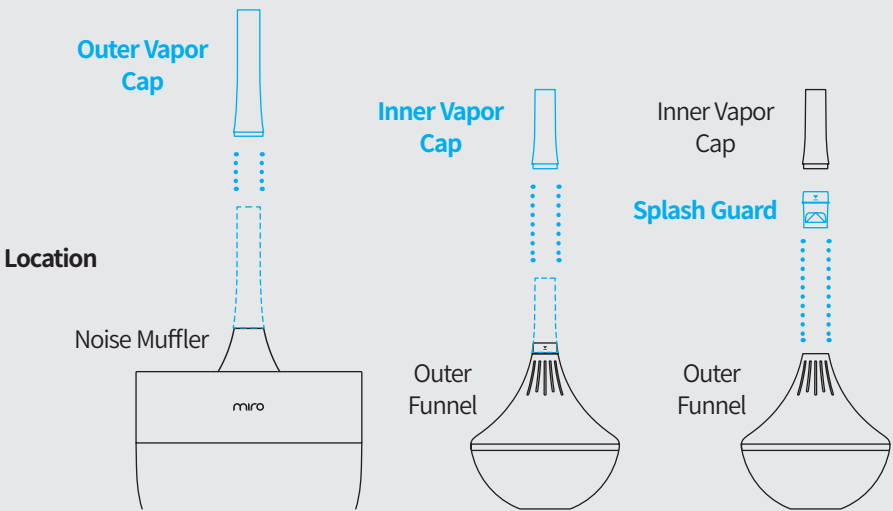


Diagram 9-1

## How to differentiate various Vapor Caps

Outer Vapor Cap and Inner Vapor Cap have similar designs. Please make sure to use the right parts for each location.

Part Name	Outer Vapor Cap	Inner Vapor Cap	Splash Guard
Required / Optional	Optional	Required	Optional
Transparency	Translucent	Solid	Solid
Size	6.3" / 16cm	3.54" / 9cm	1.57" / 4cm



# Miro Humidifier Assembly

Scan to watch  
the assembly  
video.



## 01. Fill the Water Bowl

Fill the Water Bowl with purified water, distilled water, or drinking water. Please remember that you breathe in the mist particles. We recommend using distilled water for prolonged use of the humidifier. Do NOT fill over the MAX line as indicated in Diagram B1-1

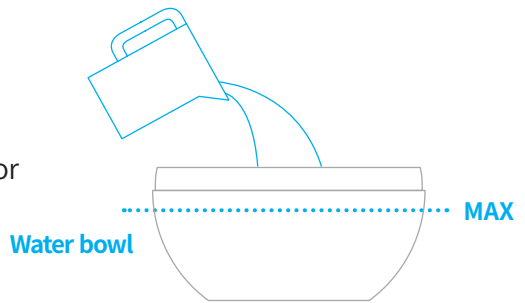


Diagram B1-1

### Warning

Using hot water, hard water, or contaminated water can permanently damage the unit.

### Warning

Overfilling the Water Bowl may cause the humidity output to decrease due to reduced airflow.

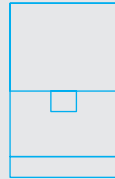
**Miro recommends using purified or distilled water.**

Tap water can be used but please remember that tap water contains minerals, calcium, magnesium, and other chemicals. Using tap water will cause mineral buildup which will shorten the lifespan of your humidifier. If you use hard water, please wash your humidifier more frequently.

Recommended



**Distilled Water**



**Purified Water**



## 02. Floating the Main Unit

Float the assembled Main Unit in the Water Bowl.

Make sure NOT to sink the USB cable into the water.

### Warning

Make sure to keep the tip of the USB cable dry!

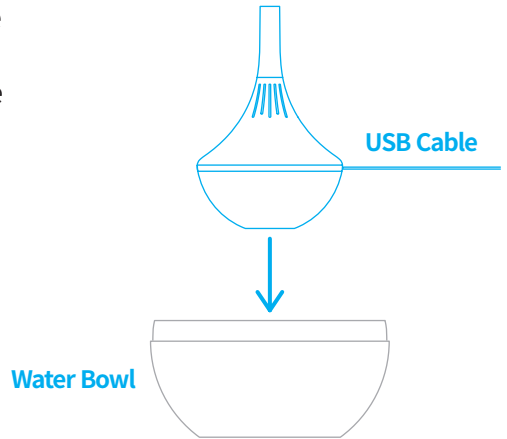


Diagram B2-1

## 03. Placing the Water Bowl Cover

Place the Water Bowl Cover on top of the Water Bowl and the Main Unit. Make sure to line up the groove with the USB cable to ensure that the Water Bowl Cover does not interrupt with the wire.

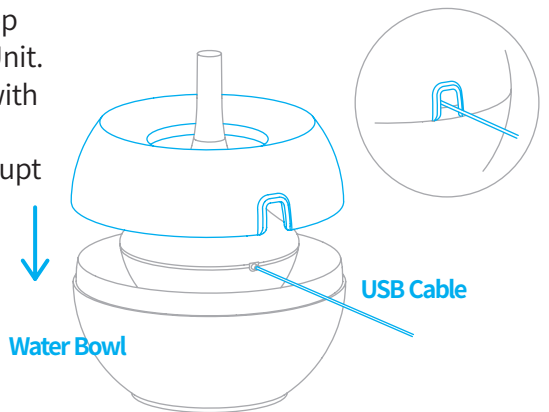


Diagram B3-1

### Warning

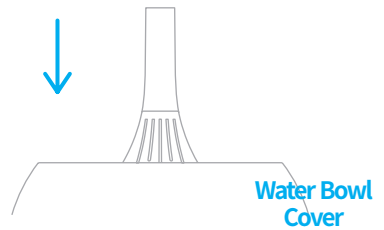
Overfilling the Water Bowl may cause the humidifier output to decrease significantly due to the reduced airflow.

## 04. Placing the Noise Muffler Optional

Miro recommends using the Noise Muffler if you are a light sleeper.

### Tip

Miro humidifier is very quiet to begin with. Noise Muffler will make the humidifier nearly silent.



## 05. Placing the Outer Vapor Cap Optional

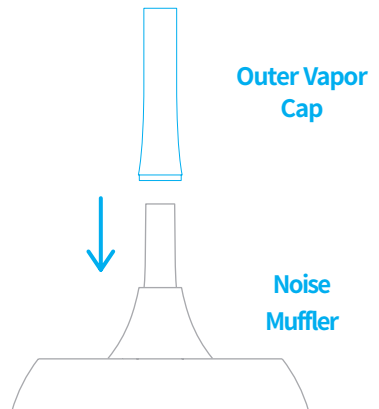
Click the Outer Vapor Cap into the Noise Muffler. Using the Outer Vapor Cap can help you change the output direction.

### Warning

Outer Vapor Cap can only be used with the Noise Muffler.

### Tip

Please see page 14 for more information on Outer Vapor Cap



## Water Bowl Base NR07G Only

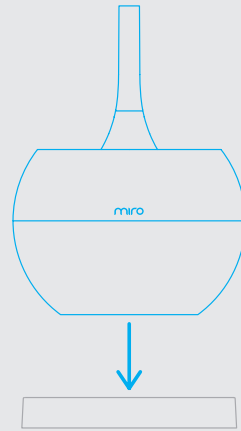
Place the Water Bowl Base on a flat surface. Place the assembled Miro NR07G humidifier on top of the Water Bowl Base.

### Tip

Water Bowl Base is only applicable with NR07G.

### Warning

Please be careful when handling the humidifier.



## 06. Connecting the USB Cable

Plug the Mist-maker USB Cable into the Controller.

### Warning

Please make sure to secure the USB into the Controller. The humidifier will not operate if the USB Cable is not pushed in fully.

### Warning

Please do not pull the wire when unplugging. See Diagram B6-1 for more details.

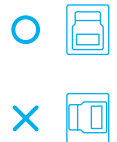
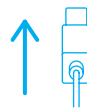
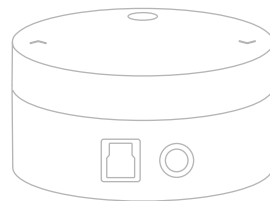


Diagram B6-1

## 07. Connecting the power cable

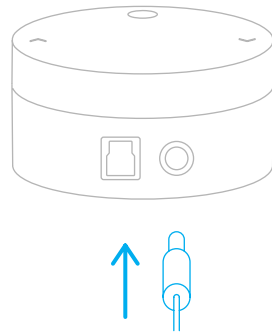
Plug the power cable into the Controller

### Warning

Please make sure to secure the power cable into the Controller. The humidifier will not operate if the power cable is not pushed in fully.

### Warning

Please do not pull the wire when unplugging.

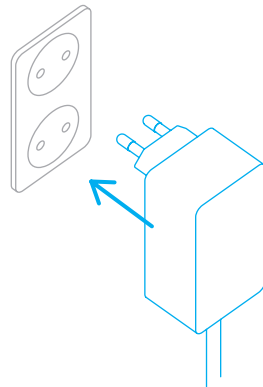


## 08. Connecting your humidifier to DC Adapter

Plug the power adapter into a power outlet. Use your humidifier with care and refer to page 22~23 for details.

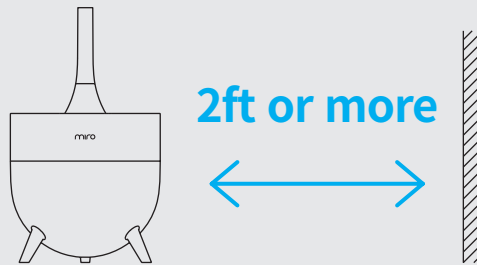
### Warning

Please do not pull the wire when unplugging.



### Maintain distance from the wall

Maintaining 2ft away from the wall helps the circulation of vapor from the humidifier, maximizing the humidifier efficiency.



### Maintain at least 8ft away from the Miro Air Purifier

The sensor from Miro Air Purifier will detect the vapor particles from the humidifier. This may cause the air purifier to perform at its highest output. Please set the Air Purifier power level to one if humidifier has to be used nearby.



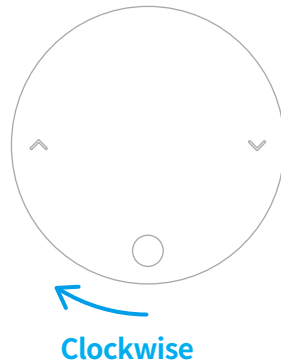
# How to Operate Your Humidifier

support.  
mirohome.  
com



## Powering On Your Humidifier

Turn the Controller clockwise until you hear a 'click' to power on the humidifier.

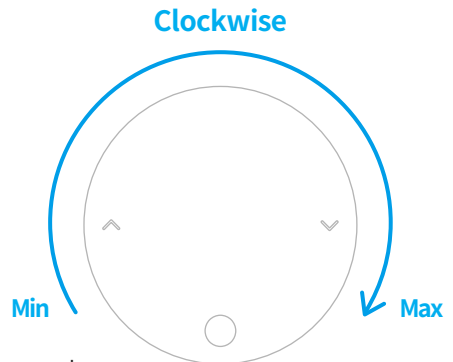


## Output Setting

Turn the Controller clockwise to increase mist output

### Warning

Miro recommends maintaining a low mist output throughout the day. Only go up to the highest setting when the environment is extremely dry. Your environment may get extremely humid if the humidifier is left on at the highest setting due to Miro humidifiers' powerful output.

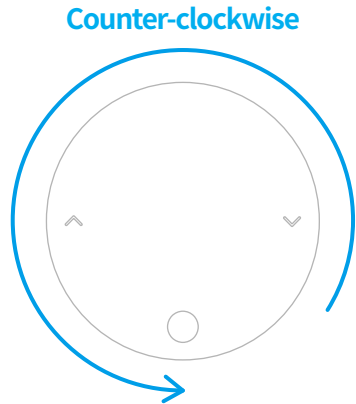


### Tip

Please refer back to page 27 if your humidifier is not working properly. If you cannot self-diagnose, please reach us at [support@mirohome.com](mailto:support@mirohome.com)

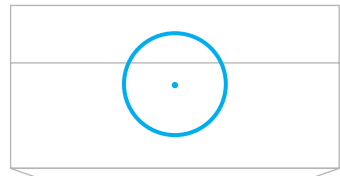
## Powering Off Your Humidifier

Turn the Controller counter-clockwise until you hear a 'click' to power off the humidifier.



## Low water level indicator

The Main Unit needs to be floating in order for the humidifier to make mists. When the water level dips to a point where the Main Unit cannot float, the small power indicator will blink. The Mist-maker and fan will automatically stop when this happens. Please refill water and restart the humidifier.



# How to Wash Your Humidifier

Video User Guide



Every module can be cleaned with just dish soap and sponge.

## Washable Modules

Power OFF your humidifier before washing. Use gentle dish soap with sponge to make foam. Clean your humidifier.



Mist-maker  
(Do NOT wash the tip of the cable. Keep the tip away from water)



Outer Vapor Cap



Noise Muffler



Inner Vapor Cap



Splash Guard



Water Bowl Cover



Outer Funnel



Inner Funnel



Water Bowl



Floating Base



Water Bowl Base  
(NR07G Only)

### Tip

Size and the look of each module may differ based on the model.

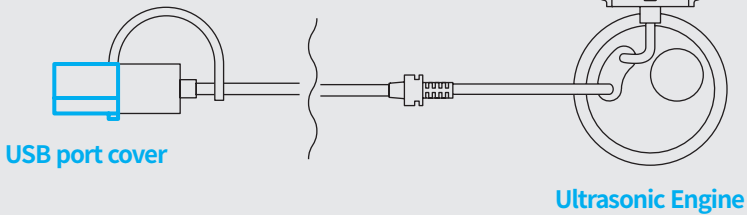


## Washing Your Mist-maker

- Please cover the USB port using the USB port cover to prevent any water coming in contact with the USB port.
- Please make sure the USB port is completely dry before using. Any remaining water on the USB port may damage your humidifier.



Please use the USB port cover before washing your Mist-maker



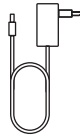
## Do NOT wash these modules

MUST READ

Controller, DC Adapter, and the USB Port of the Mist-maker cannot be washed. These are the only modules that are not waterproof. Do not wash them or submerge them in water.



Controller



DC Adapter



USB Port  
(from Mist-maker)

### Please read before washing!

- Do NOT wash the USB port of the Mist-maker.
- Do NOT use a tough scrubber. It will damage the unit.
- Do NOT use any harsh chemicals including but not excluded to vinegar, acidic liquid, and baking soda.
- Do NOT use hot water or boiling water to sterilize the unit. This is not necessary and it will damage the unit.

# Frequently Asked Questions (FAQs)

Please find the frequently asked questions below. If you continue to have issues with the humidifier, please create a problem ticket on [support.mirohome.com](mailto:support@mirohome.com) or send us an email at [support@mirohome.com](mailto:support@mirohome.com)

Issue	Check First	Possible Solution
My Miro humidifier is not turning on.	Is the DC adapter plugged in correctly?	Plug the DC adapter into the power outlet correctly.
	Is the Mist-maker, Fan, Ultrasonic engine, and USB cable installed correctly?	Please double check the manual to see if these parts are installed correctly. <a href="#">Refer to page 8~10.</a>
	Is the power light on the controller turned on?	Please check to see if the USB port is plugged all the way into the Controller.
	Is the power cable plugged into the Controller?	Please check to see if the power cable is plugged all the way into the Controller
There is water condensation around the humidifier.	There are various reasons as to why the water condensation may be happening.	The temperature and humidity may be causing the water condensation. When the air is completely saturated(humid) the mist will fall to the ground and cause water condensation. Reduce the output level and try to open the window every four hours. Miro recommends using Splash Guard and Noise Muffler to help with the water condensation issue.

<b>Issue</b>	<b>Check First</b>	<b>Possible Solution</b>
My humidifier is too loud.		Please use the Noise Muffler. This will bring the operating noise to around 8dB. If the unit is still too loud, please contact us at <a href="mailto:support@mirohome.com">support@mirohome.com</a> .
Humidity does not increase even when the humidifier is on.	Did you leave your window open? Is there continuous airflow?	Humidity is affected by the size of the room, temperature, and ventilation. Please make sure to keep your windows closed to increase the humidity in your environment. Miro recommends using the humidifier in a closed space.
What type of water can I use?		You can use any type of water. Miro recommends using distilled or purified water for maximum performance.

Issue	Check First	Possible Solution
My humidifier will not make any mists	Is the water too hot?	Please do not use hot water with the humidifier.
	Is the water level too low?	Please refill the Water Bowl. The humidifier will stop running when there is about an inch level of water left. Please refill to keep using the humidifier.
	Is the Mist-maker and fan installed correctly?	Please refer to page 7~12 and install the modules correctly.
	Is the bottom of the Main Unit clean?	Please clean the bottom of the Main Unit to eliminate any blockage.
	Is the Mist-maker or fan clogged by foreign materials? Are there any mineral buildup, soap, or essential oil?	Refer to page 24~26 and clean the Mist-maker and fan.
	Is the fan turning when the humidifier is on?	Please check to see if the fan is turning when you turn on the humidifier. Please contact support@mirohome.com if the fan does not turn.

<b>Issue</b>	<b>Check First</b>	<b>Possible Solution</b>
My room gets foggy whenever I use the Miro humidifier.	Is there limited ventilation in your room and completely closed off?	The continuous output and increase in humidity in a completely closed off space will make the air look foggy. Please reduce the output level and ventilate your space.
The dust level increases whenever I use the humidifier.	Is there at least 8ft between the air purifier and the humidifier?	Some sensors may recognize water vapor as dust particles. Please maintain at least 8ft between the humidifier and the air purifier.
The color of the flame from my gas cooktop changes whenever I turn on the humidifier.	Did the color of the flame change from blue to red?	This is a common occurrence. The flame color will change when your environment is high in humidity. Please don't be alarmed and continue to use your humidifier.
Can I use essential oil?		Please do not use essential oils with Miro humidifiers. The oil residue is difficult to clean and may discolor/damage your humidifier. The emulsifying agent from the essential oil may permanently damage your humidifier.

<b>Issue</b>	<b>Check First</b>	<b>Possible Solution</b>
My humidifier looks damaged/deformed after cleaning.	Did you use a dishwasher?	Please do NOT use a dishwasher. Dishwasher uses hot water and hot dry air. This can damage/deform your humidifier.
	Did you wash the Controller and DC Adapter with liquid?	The Controller and DC Adapter should NOT be washed. They are not waterproof. Please do NOT wash them. Doing so will void your warranty.
	Did you use vinegar to clean your humidifer?	Please only use dish soap and sponge to clean your humidifier. We don't recommend using vinegar or any other chemical solution. Not only is it more difficult to clean using those chemical solution, it may also degrade your humidifier over time. We designed all Miro humidifiers so that you can easily clean them with only dish soap and sponge.
Can I wash my humidifier with hot water?		Please use lukewarm water. Do NOT wash with hot water. Hot water may damage your humidifier.

# Please read before use for your safety.

To reduce the risk of injury/physical harm, please read the following before using your Miro humidifier.

## WARNING

- Do NOT wash the Controller(NR07 Series), Touch Station(NR08 Series), and DC Adapter with water or any other liquid.
- Do NOT use dirty, rusty water to clean or operate your humidifier.
- Do NOT touch or plug the power cable with wet hands.
- Do NOT drag or push the product when moving your humidifier. Please lift the whole unit.
- Do NOT use your humidifier if the cables or DC Adapter is damaged. Contact us at [support@mirohome.com](mailto:support@mirohome.com) for further support.
- Do NOT operate your humidifier near hazardous items.
- Do NOT place your humidifier on top of a hot surface.
- Please use both hands to support the bottom of the Water Bowl when refilling or moving your humidifier for any reasons.
- Connect the Mist-maker to the Controller, then connect the power cable to the controller. Not following this order may cause sparks.
- Do NOT leave water inside the water tank for a long time.



## **Tips & Recommendations**

- Miro recommends using the humidifier away from any other electrical appliances or any products sensitive to humidity.
- Always make sure to clean your humidifier and place your humidifier on a flat surface.
- Place your humidifier at least 2ft away from the wall for maximum performance.
- Continuous operation at max output may cause water condensation around your humidifier.
- Miro recommends using distilled or purified water.  
Hard water contains minerals that may shorten the lifespan of your humidifier.
- Do not pull any cords by the wire.  
Make sure to unplug by holding the plug head.
- Please make sure your humidifier is disconnected from electricity when refilling or washing your humidifier.
- Please do not bend or pull any cables.  
Do not make a knot or tie the cable too tight.
- Keep the humidifier out of reach from children.

- In case of humidifier malfunction, disconnect your unit immediately and contact us at [support@mirohome.com](mailto:support@mirohome.com)
- Please be aware of your environment's humidity when using your humidifier. Highly humid environment may cause water condensation near your humidifier.
- We test all our units before sending them out. Please don't be alarmed if you think the product has been opened.
- The Mist-maker may generate a small amount of heat during operation. This is normal.
- Placing your humidifier on a cold surface may promote water condensation. You can place a towel underneath to prevent this situation.
- Miro humidifiers are extremely powerful. Please maintain low mist output. Use high output level when your environment feels dry. Change back to low when optimal humidity is met.

# Product Specifications

<b>Model Name</b>	MIRO-NR07S	MIRO-NR07G
<b>Manufacturer</b>	Miro Corp.	
<b>Humidification Method</b>	Ultrasonic	
<b>Color</b>	White + Grey	
<b>Water Tank Size</b>	5 L	4 L
<b>Item Weight</b>	2kg / 4.4lbs	
<b>Power Consumption</b>	20 W	
<b>Output Current</b>	DC 24 V / 1 A	
<b>Input Voltage</b>	AC100 - 240V (50Hz ~ 60Hz)	
<b>Dimension</b>	MIRO-NR07S : 244 X 246 X 380 (mm)	
	MIRO-NR07G : 268 X 270 X 368 (mm)	
<b>Humidification Rate &amp; Approximate Runtime ( NR07S )</b>	<b>Level</b>	<b>Output Level / Runtime</b>
	MAX	500ml/hr, 10 hours
	MIN	200ml/hr, 20 hours
<b>Humidification Rate &amp; Approximate Runtime ( NR07G )</b>	<b>Level</b>	<b>Output Level / Runtime</b>
	MAX	500ml/hr, 8 hours
	MIN	200ml/hrs, 20 hours

Product design and dimensions may slightly change without advance notice.

**miro**

**mirohome.com**

Miro Support  
[support.mirohome.com](https://support.mirohome.com)