


# DuoFlo Sprayer

## INSTALLATION INSTRUCTIONS

Part#: 97040-XXXX

### PARTS/TOOLS NEEDED:

	Hole Saw Bit 2", 2 3/4", & 4"	Power Drill w/Phillips Bit	Needle Nose Pliers
DuoFlo Includes: Nylon or SS Hose, Mesh bag, zip ties & Mounting Screws	Not Provided	Not Provided	Not Provided

### IMPORTANT SAFETY INSTRUCTIONS. READ CAREFULLY FOR YOUR PROTECTION AND SAVE ALL INSTRUCTIONS.

- Disconnect power before installing, adding or changing any component.
- To avoid a hazard to children, account for all parts and destroy all packing materials.
- It is recommended that fuse protection be added to the positive (+) input.

- Determine the installation location. Use a hole saw to drill the appropriate hole size.

Part #	Mounting Type	Hole/Saw Bit Size
97040HSM	Horizontal Screw Mount	2"
97040HTM	Horizontal Toggle Mount	2 3/4"
97040VTM	Vertical Toggle Mount	4"

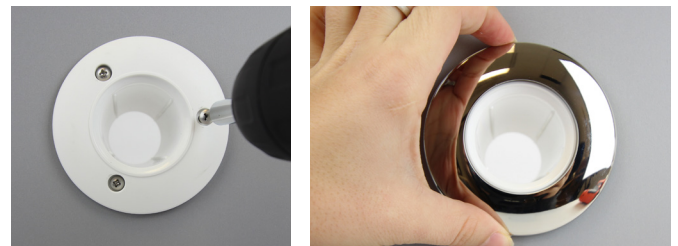
- Attach the mesh bag with the zip tie. Use pliers to tighten zip tie securely to the shower cup. Cut the excess zip tie off with scissors.



- Fish out the water line in the unit and attach hose to water supply line. Cinch the zip tie to the hose with needle nose pliers.



- Screw Mount:** Mark the screw holes and pre-drill holes. Insert the holder with the bag into the hole. Screw the holder to the surface. Snap on the bezel to the holder.



- Toggle Mount:** Insert the holder with the bag into the hole. Tighten the toggles by using a drill or screw driver. Snap on bezel to the holder.



3030 Corporate Grove Dr.  
Hudsonville, MI 49426  
Phone: 616.396.1355  
[itc-us.com](http://itc-us.com)

For warranty information please visit [www.itc-us.com/warranty-return-policy](http://www.itc-us.com/warranty-return-policy)  
DOC #: 710-00158 · Rev B · 11/16/2022