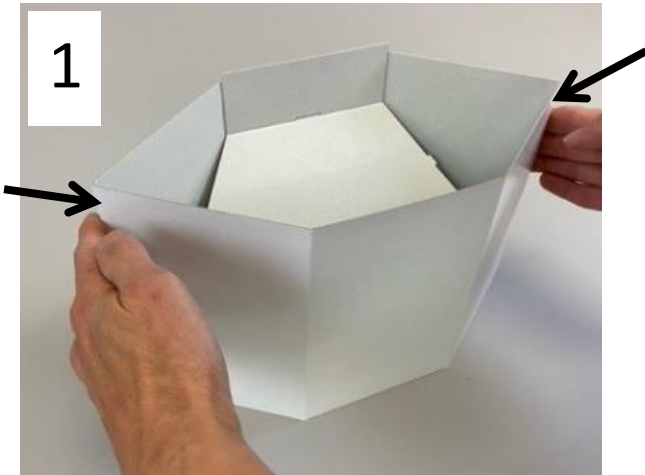
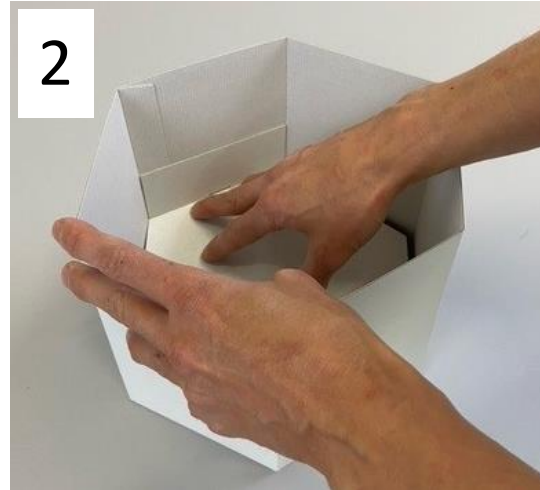


Hexagonal Box Assembly Instructions

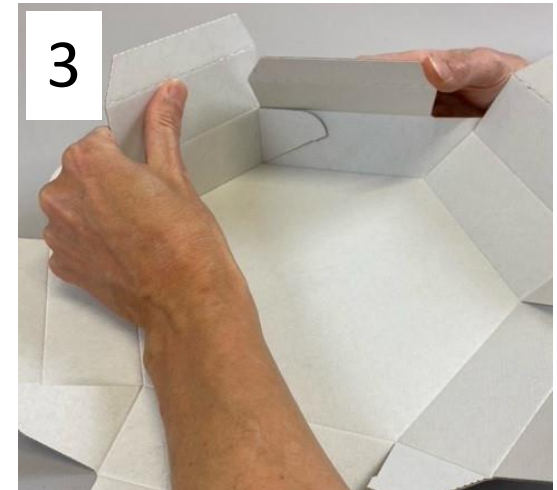
Please Note: For best results, pre-crease all edges before step one.



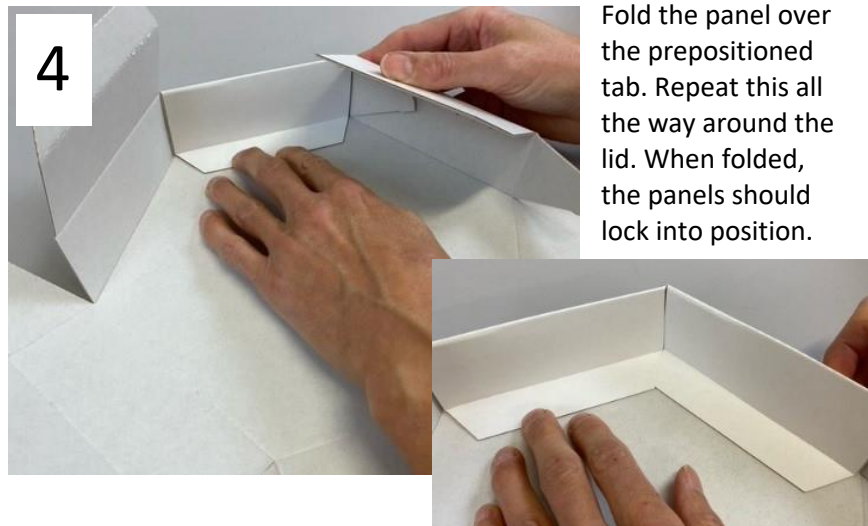
Push the furthest edges of the base inwards so the box takes shape.



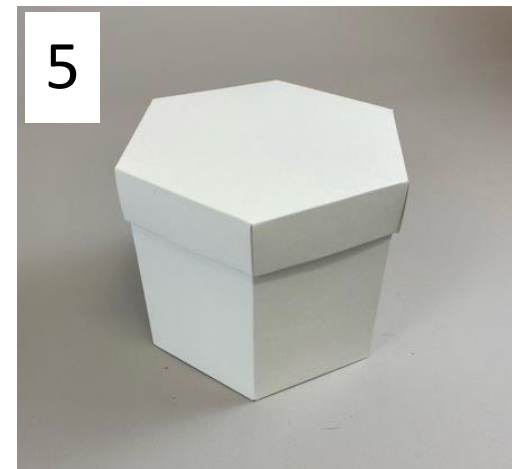
Press the base panel firmly down into place.



For the lid, before folding each panel over, you want to ensure that the tab is positioned as above.



Fold the panel over the prepositioned tab. Repeat this all the way around the lid. When folded, the panels should lock into position.



Now you can fill your box and place the lid on the base.