

**MODERN**  
EFFORTLESS  
GLOW



FOR YOUR  
HOME

**BLAZE**

# **Aleutian Islands**

## **Fire Table Set Up and Owner's Manual**



**WARNING:** The information provided must be followed exactly. If not followed as described, a fire or explosion may result, causing property damage, personal injury or loss of life.

**WARNING:** This Fire Table is intended for outdoor use only in a well-ventilated space. It cannot be used inside a screened-in porch, gazebo, building, garage or any other enclosed area

### **DANGER IF YOU SMELL GAS:**

- Do Not try to light the Fire Table or any other appliance.
- Do not touch any type of electrical devices: wall switches, lamps, lights etc.
- Do not use a cell phone
- Shut off gas to the burner.
- Extinguish any open flame.
- If odor continues, keep away from the appliance and immediately go to a location away from the building. Call a gas supplier or fire department.
- Installation or servicing of the Fire Table must be done by a qualified contractor or a gas supplier with a knowledgeable gas technician

### **WARNING**

Do not light the burner without reading the **LIGHTING** instruction section of this manual.

**DO NOT STORE OR USE GASEOLINE OR OTHER FLAMMABLE LIQUIDS OR VAPORS IN THE VICINITY OF THIS GAS APPLIANCE. DO NOT STORE LIQUID PROPANE CYLINDER NOT CONNECTED TO THIS APPLIANCE IN THE VICINITY OF THIS APPLIANCE. IF THESE WARNINGS AND INSTRUCTIONS ARE NOT FOLLOWED, A FIRE OR EXPLOSION MAY RESULT, CAUSING PROPERTY DAMAGE, PERSONAL INJURY OR DEATH.**

**Notice to Installation Professional: Leave these instructions with owner for future reference**

# ***NOTE ON INSTALLATION***

We have tried to make the installation as easy as possible.

This installation guide is meant to aid experienced contractors and qualified individuals on installing a Modern Blaze Precast Fire Pit / Fire Table.

**Modern Blaze will not be held liable for any installation performed by nonqualified persons.**

If you have questions on installations, please check the Modern Blaze web site ([www.ModernBlaze.com](http://www.ModernBlaze.com)) Check under the INFO tab and look for installation tabs and go to the pertinent tab. There are also YouTube videos being added all the time.

You can always call the office.  
530.622.3877 and ask for Dan

# **“Please Read”**

## **PROPER WAY TO HANDLE AND MOVE THE TOE KICK AND PANELS OF YOUR FIRE FEATURE**



**Toe Kick**

**YES**



**Toe Kick**

**YES**



**Body Panels**

**YES**



**Body Panels**

**YES**



**Toe Kick**

**NO**



**Body Panels**

**NO**

# Warranty

HearthCo, Inc., manufacturer of Modern Blaze precast GFRC (Glass Fiber Reinforced Concrete) products warrants to the original purchaser of Modern Blaze products that we will repair or replace, at the sole option of the manufacturer, any Modern Blaze product found to be defective in material or workmanship within five years of the original purchase..

This warranty applies only to Modern Blaze products which have been stored, handled, installed and cared for in accordance with the recommendations provided in the Modern Blaze information and care guide.

The Modern Blaze product warranty is nontransferable.

This warranty does not cover any Modern Blaze product that has been installed then moved from the original place of installation or damages caused by:

1. *Failure of any finish, accessories, adhesives, caulk, grout, paint or failure of anything not related to the Modern Blaze product.*
2. *Physical abuse, improper use of the product, damage from excessive heat or breakage not due to a manufacturing defect.*
3. *Failure to follow the recommendations provided in the Modern Blaze information and care guide.*
4. *Installation or repair by a company or individual not recognized as a qualified technician.*

Modern Blaze makes no implied or expressed warranty. Modern Blaze shall not be liable in tort, contract, or otherwise, for any loss or any direct, consequential, incidental or exemplary damages arising from the use or inability hereunder is limited solely to repair or replacement, including necessary and reasonable labor charges of Modern Blaze GFRC products.

This warranty gives the original purchaser of Modern Blaze GFRC products specific legal rights. Other rights may be available, which may vary state to state. To register a claim under this warranty, please write to:

HearthCo, Inc.  
C/O Warranty Dept.  
5781 Pleasant Valley Rd.  
El Dorado, CA 95623

# Conditions and Limitations

***HearthCo, Inc. warrants its products against manufacturing defects to the original purchaser only, provided that the purchase was made through an authorized HearthCo dealer and is subject to the following conditions and limitations:***

This warranty is non-transferable and may not be extended what-so-ever by any HearthCo employee or by our representatives.

This product must be installed by a licensed, authorized service technician or contractor. Installation must be done in accordance with the installation instructions included with the product and all local and national building and fire codes.

This limited warranty does not cover damages caused by misuse, lack of maintenance, hostile environments, accidents, alterations, abuse or neglect and parts installed from other manufacturers will nullify this warranty

This limited warranty further does not cover any scratches, corrosion or discoloring by heat, abrasive and chemical cleaners, nor chipping that occurs during the installation of this product and or the use of this product.

This warranty extends to the replacement of warranted parts, which are defective in material or workmanship provided that the product has been used in accordance with the operation instructions and under normal conditions.

After year one, HearthCo may at its discretion, fully discharge all obligations with respect to this warranty by refunding to the original purchaser the wholesale price of any warranted defective part(s).

HearthCo will not be responsible for the installation, labor or any other costs or expenses related to the re-installation of a warranted part, and such expenses are not covered by this warranty.

Notwithstanding any provision contained in the warranty, HearthCo's responsibility under this warranty is defined as above and it shall not in any event extend to any incidental, consequential, or indirect damages.

This warranty defines the obligation and liability of HearthCo with respect to the HearthCo GFRC products and any other warranties expressed or implied with respect to this product, its components or accessories are excluded.

HearthCo neither assumes, nor authorizes any third party to assume, on its behalf, any other liabilities with respect to the sale of this product.

HearthCo will not be responsible for: over firing, blow outs caused by environmental conditions such as strong winds, or inadequate ventilation.

Any damages to the HearthCo GFRC product due to weather damage, hail, rough handling, damaging chemicals or cleaners will not be the responsibility of HearthCo.

A bill of sale or copy will be required with a model number when making any warranty claims from HearthCo.

HearthCo reserves the right to have its representative inspect any product or part prior to honoring any warranty claim.

HearthCo shall not be liable for any transportation charges, labor costs, or export duties.

# Information & Product Care Guide

- We want to thank you for purchasing a **Modern Blaze** GFRC (Glass Fiber Reinforced Concrete) Outdoor Living Product. We have created this information and care guide to help you gain some understanding and to aid you in the care of your fireplace mantel.
- Our GFRC products are made from some of the highest quality materials available. Modern Blaze GFRC products are manufactured using noncombustible materials; therefore, they will not burn and there is zero flame spread. Modern Blaze GFRC products are hand crafted individually to give variation in color and texture to replicate natural stone
- Modern Blaze GFRC products are manufactured using Portland Cement / aggregate mixture with other additives that enhance the properties of the mix. Cements are very durable and strong and somewhat stain resistant. It is very important to note that the product comes from the factory with a sealer applied and is stain resistant, not stain proof.
- We do recommend keeping your Modern Blaze GFRC product clean and to re-seal at least once every year, very similar to sealing the grout on your tile or granite. This will aid in maintaining stain resistance. Use a type of sealer that is designed to penetrate concrete or stone products, look for Satin or Gloss sealers. After sealing you can use a product such as The Original Bee's wax. Apply it just like waxing a car. Also read the can, this product is amazing and has many uses. Make sure to read and to follow all the instructions.
- This is a concrete product, as concrete cures, small hair line cracks may appear in time. This is a normal occurrence, use the patch material, fill in the crack, re-seal.

## In the event that something is spilled on the product we recommend as follows:

- ***Beverage Drinks:***
- Using a clean cloth, dab the liquid to soak up the excess only, do not scrub. Then flush the area with clean fresh water. If more cleaning is needed, gently clean with a non detergent cleaning solution.
- ***Soils, dust or dirt:***
- First use a vacuum to remove any of the debris on the mantel. If more cleaning is necessary gently clean with a non detergent cleaning solution.
- ***HearthCo, Inc.*** has taken the greatest care in manufacturing the highest quality GFRC products possible. Due to the characteristics of precast products; **Modern Blaze** assumes no responsibility for the cleaning and care of your **Modern Blaze** fireplace mantel.

***WARNING! Failure to follow these instructions could result in property damage, personal injury or death. Read and follow all warnings and instructions in this manual prior to operating this product.***

# Safe Operation Practices

- Please read the entire instruction manual before operating the Fire Feature. This Fire Feature must be assembled exactly according to the instructions in the manual. Make sure to perform the required leak tests before operating.
- This Fire Feature must be used only outdoors in a well-ventilated space. It cannot be used inside a screened-in porch, gazebo, building, garage or any other enclosed area.
- Do not use in windy areas or settings. Strong winds can cause flame blow-outs and adversely affect overall performance. Wind blowing the flame sides ways can also cause the flame to burn the finish. We highly suggest you purchase an optional wind guard.
- This Fire must not be used or installed in or on any RV and/or boat.
- Under no circumstances should this Fire Table be modified.
- Do not operate under overhead combustible materials.
- Maintain proper clearances to combustibles, 20" on all sides of the Fire Table.
- You must turn off the gas supply valve when not in use.
- Do not attempt to use a propane cylinder that is not equipped with a QCC1 type connection.
- Inspect the fuel supply hose before each use. If there is evidence of excessive abrasion, wear, cracks or a cut in the hose, it must be replaced. Make sure to replace with approved parts and have a certified technician perform the work.
- Leak test the unit before the initial use, annually, and whenever any gas components are replaced.
- Follow lighting instructions carefully when operating.
- The burner valve must be off when turning the propane cylinder valve on.
- Adults and especially children should be alerted to the hazards of an open flame, high temperatures of the media and high temperatures of the surrounding concrete opening.
- Do not leave unattended while operating.
- Keep any electrical supply cords and fuel supply hoses away from any heated surfaces.
- Do not allow water (rain, sprinklers, hose, etc..) to come in contact while in use. A large temperature differential can cause cracking in the concrete surfaces.
- The Fire Feature should be covered when not in use, it will help protect the finish and the product itself. Freezing water / snow may cause damage. Water expands when freezing and can cause the GFRC to crack.
- Do not use a pressure washer to clean any part of the unit.

# General Information

**CALIFORNIA PROPOSITION 65:** The burning of gas fuel creates by-products, some of which are on the list as substances known by the State of California to cause cancer or reproductive harm. When burning a gas appliance always ensure adequate ventilation to the unit, to minimize exposure to such substances.

## ***Propane Cylinder Specifications:***

***WARNING! Failure to follow these instructions could result in property damage, personal injury or death. Read and follow all warnings and instructions in this manual prior to operating this product.***

When using propane from a portable cylinder, you must use the regulator supplied from the manufacturer. Cylinders to be used with this unit must be supplied with a QCC1 cylinder valve. A QCC1 cylinder has a positive seating connection, which will not allow gas flow until a positive seal has been achieved. It is also equipped with an excess flow device. In order to attain full flow to the Fire Feature, the valves must be in the off position when the cylinder valve is turned on.

A dented or rusty cylinder, damaged valve, regulator or gas line may be hazardous and should be checked by your propane supplier.





# ***Gas Hook-Up Instructions:***

***Piped in Gas Hook-Up:*** The gas piping from the source to the Fire Feature is the responsibility of the owner and should be installed by a qualified gas technician.

Use an approved whistle free gas flex line to connect the piped in gas line to the provided gas valve that is installed on the Fire Feature.

The installation must comply with National Fuel Gas code, ANSI Z223.1 in the United States. The gas supply pipe must be sufficiently sized to supply the BTU/h specified with the Fire Feature, based on the length of the piping run.

## ***Leak Testing Instructions:***

***WARNING! A leak test must be performed annually and each time a cylinder is hooked up or if a part of the gas system is replaced.***

***WARNING! Never use an open flame to check for gas leaks. Be certain no sparks or open flames are in the area while you check for leaks. Sparks or open flames will result in a fire or explosion, damage to property, serious bodily injury, or death.***

Leak Testing: This must be done before initial use, annually, and whenever any gas components are replaced or serviced. Do not smoke while performing this test and remove all sources of ignition. Turn burner valve to the off position. Turn gas supply valve on.

Brush a half-and-half solution of liquid soap and water onto all joints and connections of the regulator, hoses, gas lines, air shutter and valves. Bubbles will indicate a gas leak. Either tighten the loose joint or have the part replaced. Have the Fire Feature inspected by a certified gas technician or contractor.

If the leak cannot be stopped, immediately shut off the gas supply, disconnect it, and have the inspected by a certified gas technician or contractor. Do not use the Fire Feature until the leak has been corrected.

# ***Delivery and Uncrating Instructions***

The crate may be packaged differently than shown below. We are constantly striving to be better and better on our packaging techniques, so we may determine a better way to package and thus make small changes.

The crate should arrive on a pallet with plastic over the top and halfway down the OSB, shrink wrapped and strapped in good condition. If the crate does not have the plastic and shrink wrap that means someone has removed it for some reason. Please inspect the crate very carefully, if you see any damage to the crate, please take photos and write on the delivery paperwork what you see.

If it is obvious that the crate, packaging and the product is destroyed reject the delivery. Then call your dealer for further instructions.



You decide whether the crate is visibly in good shape or visibly damaged. If you accept the crate the responsibility now shifts to you. At least if you see visible damage and note what you see on the shipping companies' paperwork, take some good photos, we will have evidence to make a shipping claim. We take a photo of how the crate looked when it left us so we can use your photos and compare the two.

You would be shocked at what we have seen shippers try to deliver.

## ***Location and Start the Set Up***

***You must have a solid surface to support your Fire Pit / Fire Table such as a concrete slab, or a deck that can support the weight of your Fire Pit / Fire Table.***

***The area does not need to be perfectly level, but it does need to be parallel. You do not want any twist from one side to the other.***

***You cannot block, obstruct or impede the air vents on all 4 sides at the bottom of the Fire Pit / Fire Table. If there is a gas leak these vents allow the gas to escape***

***These are for your safety. If not followed as described, a fire or explosion may result, causing property damage, personal injury or loss of life.***



***Air Vent on a Toe Kick***



***Air Vent on a Std Panel***

# ***If your Fire Feature has a toe kick, 36" and 42" tall tables - start here.***

Make sure you plan well on the placement; you don't want to dismantle the components to move it. Do not try moving the Fire Pit / Fire Table after it assembled, it might cause damage or personal injury.

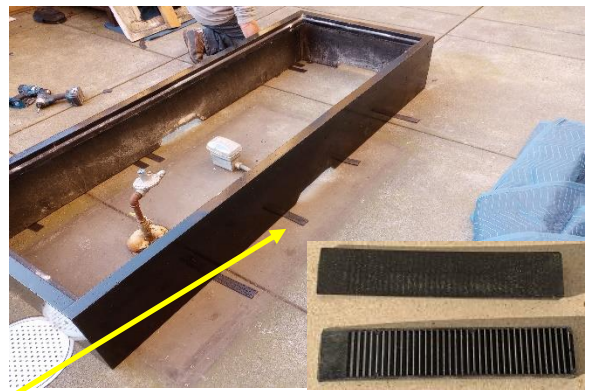
***Please be careful with the material. Its weakest point are edges and or corners. It is very strong however you can chip the corners by dropping panels or letting them hit each other.***



Place the toe kick at your desired location, keep in mind which direction you want the access door to face. There should be a painted mark that lets you know the access door side.



Do your best to level the toe kick in both directions. More than level it is important that side to side must be parallel.



## ***This step is critical.***

Your box of supplies should have these composite shims included. They can be purchased at most hardware stores if you need more. Use the shims to level the toe kick and then check about every 16" for unsupported space between the toe kick to the surface it sits on. Make sure to put the grooved side of the shim down so then you can snap off the extra shim.

# Body Panels Installation on the Toe Kick



The panels are screwed together using a 5/16-Inch hex nut driver in an electric drill and Topcon blue concrete screws with a washer. Each corner should have 3 screws and washers. Do not over tighten the screws. Make sure they are snug and close the gap.

We do recommend using some clear silicone caulk at the attachment points. All it takes is 3 or 4 small dabs from top to bottom at least 1" in from the face of the structure.

The panels have a notch that fits onto the toe kick. When properly placed there will be about a 1" distance from the panel to the face of the toe kick.

1<sup>st</sup> Set a long panel on the toe kick. Make sure someone holds the panel upright.

2<sup>nd</sup> Set an end panel onto the toe kick and push the end panel up against the long panel. Screw the end panel to the long panel.

3<sup>rd</sup> Set the other long panel next. Screw the end panel into this long panel with the blue screws and washers.

4<sup>th</sup> Set the last end panel in place and screw to long panel with the blue screws and washers.

# ***Body Panels Installation with no Toe Kick***

## ***All 30" tall tables***

The panels are attached the same way as the tables with the toe kick. They simply do not sit on the toe kick, they sit on your slab, deck etc.



The panels are screwed together using a 5/16-Inch hex nut driver in an electric drill and Topcon blue concrete screws with a washer. Each corner should have 3 screws and washers. Do not over tighten the screws. Make sure they are snug and close the gap.

We do recommend using some clear silicone caulk at the attachment points. All it takes is 4 or 5 small dabs from top to bottom at least 1" in from the face of the structure.

1<sup>st</sup> Set a long panel in place. Make sure someone holds the panel upright.

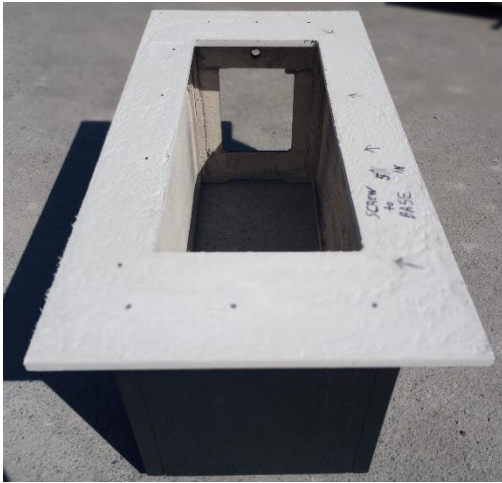
2<sup>nd</sup> Set an end panel up against the long panel. (Don't forget the silicone) Screw the end panel to the long panel.

3<sup>rd</sup> Set the other long panel next. Screw the end panel into this long panel with the blue screws and washers.

4<sup>th</sup> Set the last end panel in place and screw to long panel with the blue screws and washers.

# Top Substrate Installation

## Not all Fire Tables have a Substrate



Use 1/4" x 2 1/4" Phillips bugle head screws, drill with a 3/16" concrete drill bit. You must countersink enough, so the head of the screw is flush or below the surface of the substrate



1<sup>st</sup> If the substrate is not predrilled, set the substrate on top. Make sure it is centered with equal measurements all sides. Drill the correct size holes through the substrate and top of the base. Countersink holes as listed above.

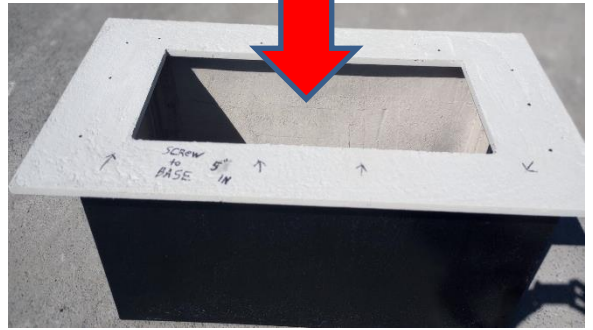
2<sup>nd</sup> Remove the substrate and clean off any chips and dust from drilling

3<sup>rd</sup> Put at least 8 round dollops of silicone (about 1/2" dollop) around the top of the base.

4<sup>th</sup> Set the substrate down onto the base structure. Make sure you set the substrate down with equal measurements all sides. You don't want to slide the substrate around very much; you will smear the silicone.

5<sup>th</sup> Using your electric drill, screw the Tapcon screws down nice and snug. Make sure there are no chunks of cement or other debris that would not allow the top to sit down securely onto the panel or substrate.

# Fire Tabletop Installation

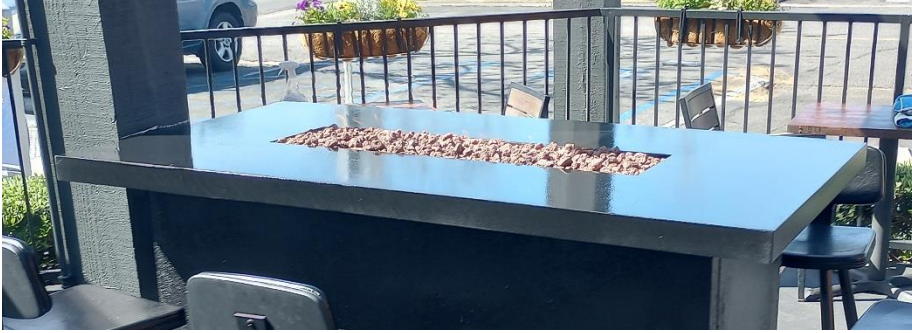


Lower the top onto the base structure. The top is very heavy, we have found it is best to use only 6 to 8 dollops of silicone to hold the top. This way if for some reason you need to remove it, you can simply lift it off. Make sure to center the top on the base structure.





# Fire Tabletop Shimming



Once the top has been installed onto the lower structure, place your hand on a corner, lift it up as well as pushing down on the corner. If you feel the top rocking, there might be some debris in-between the lower structure and the top allowing the top to rock, or it is possible that the top has cured a little different than the structure allowing it to rock. Use some of the plastic shims by wedging them into the voids to remove the ability to rock back and forth. Also, on the sides if you see voids push some of the shims into those spaces to make sure the top is supported at least every 12" or so.



Once you have pushed the shims into place, it's a good idea to give the shim a little tap with your hammer. Not too hard but enough to lock it in place.



# Gas Valve, Regulator, Burner Hook Up

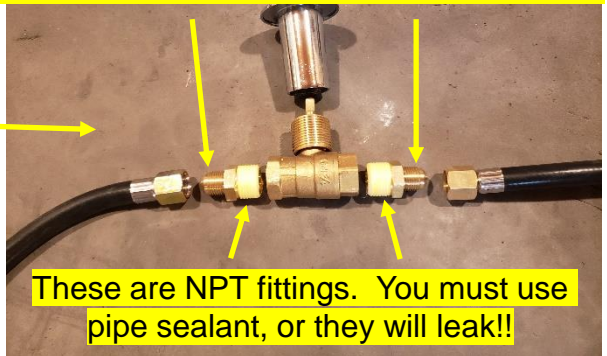


Remove all the gas line components from the plastic bag and set out. You need to connect all the fittings onto the valve prior to attaching the valve to the GFRC body.

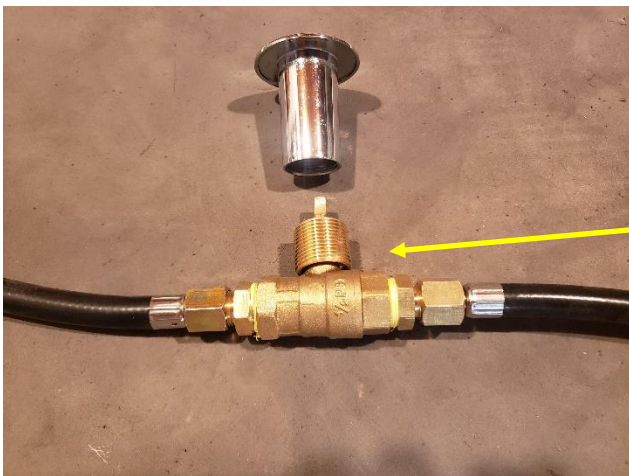
NPT stands for National Pipe Thread. Thread sealant or tape is typically required to complete the seal. You should have some yellow pipe thread tape in your box of fittings.

Flared fittings are designed in a way that they seal metal to metal. Never use thread sealant or tape.

**These are flared fittings. NEVER use thread sealant or they will leak gas!!**



**These are NPT fittings. You must use pipe sealant, or they will leak!!**



This is how the fittings should look at the valve. You are now ready to attach the valve to the GFRC body.

# Gas Valve to GFRC Body Installation

**“YOU MUST CONNECT AND TIGHTEN ALL THE FITTINGS ONTO THE VALVE PRIOR TO ATTACHING THE VALVE TO THE GFRC BODY PANEL! THIS IS SO YOU CAN TIGHTEN ALL THE FITTINGS WITHOUT PUTTING ANY TORQUE ON THE GFRC PANEL. TOO MUCH TORQUE CAN CAUSE YOU TO DAMAGE THE PANEL”**



This plastic spacer is used on the inside of the GFRC panel to hold the valve the correct distance from the panel allowing the escutcheon threads to tighten down and hold the valve in place. You must tighten the escutcheon down very tight so when you use the gas key, you can twist it on and off position without causing the valve to move.



Slip the plastic spacer onto the valve, center the valve in the center of the spacer. Now hold the valve and spacer on the inside of the GFRC panel and press firmly against the panel. Look in the escutcheon hole to make sure the threaded part of the valve is in the center of the hole. Now from the outside slide the escutcheon through the hole and thread it onto the valve. And yes, it is easier said than done but stay strong and you will succeed.



Use the 1/2" x 1/2" steel tube provided to tighten the escutcheon and the valve together. Use one hand to hold the valve in position. Make sure to tighten enough to hold the valve securely.



## ***Gas Fittings at Burner***

***Under side of Burner Pan***

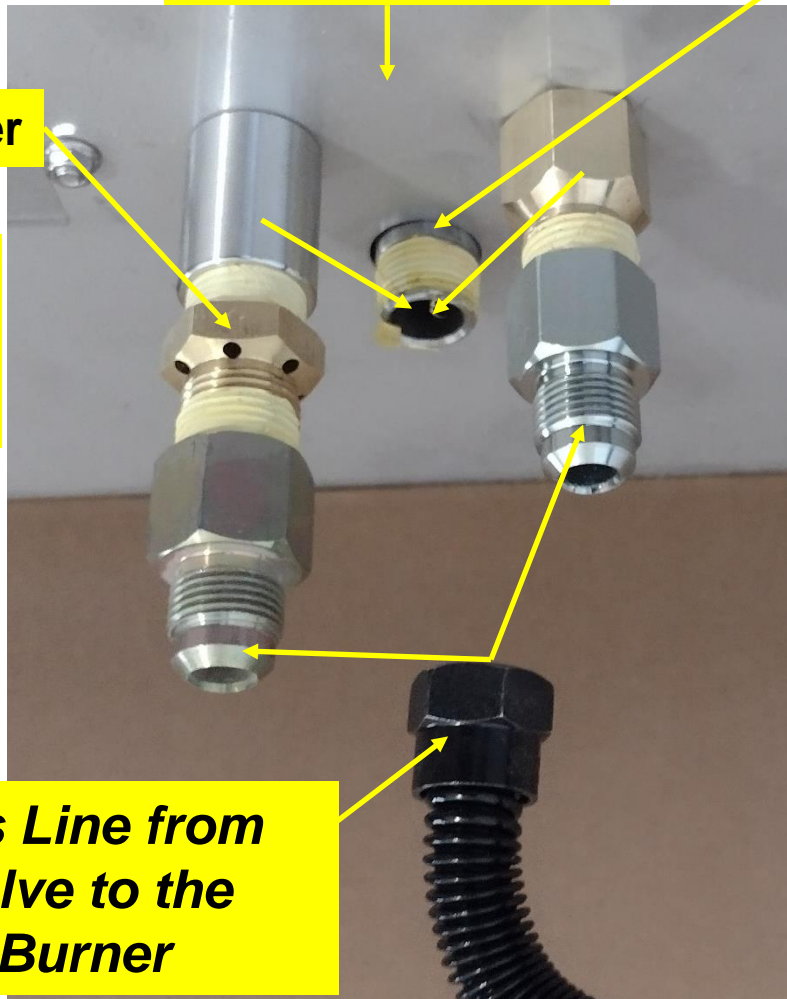
***Fitting to Burner***

***LP Air Mixer***

***Liquid Propane Set Up***

***Natural Gas Set Up***

***Gas Line from Valve to the Burner***



***Under side of  
Burner Pan***

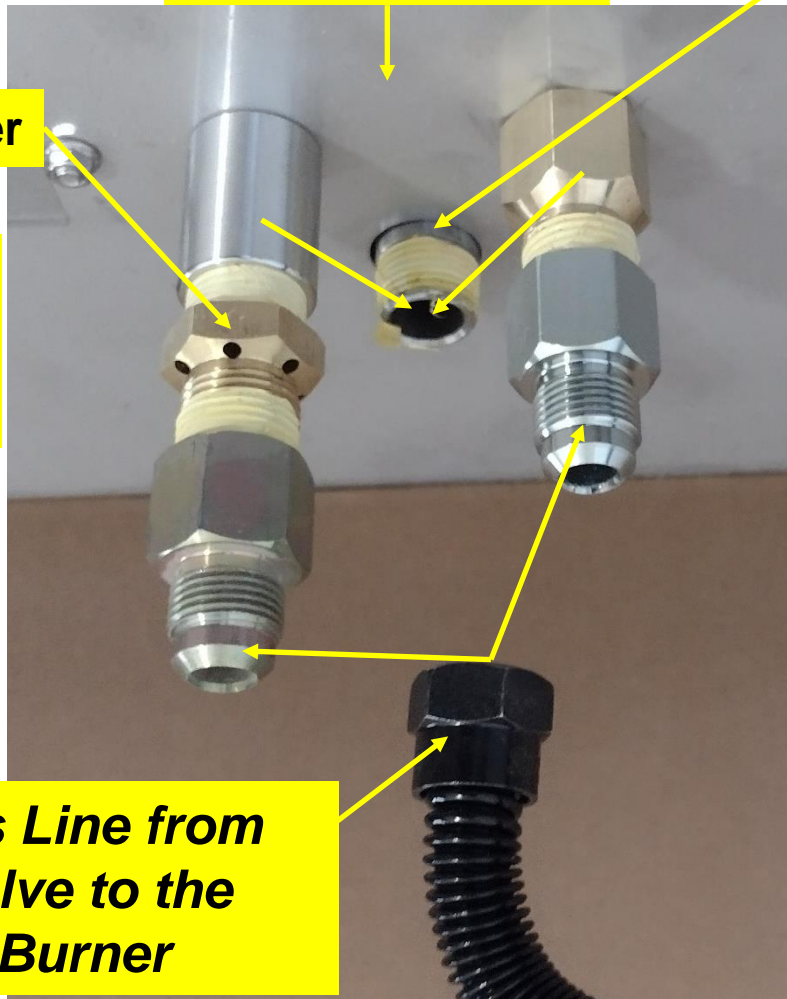
***Fitting to  
Burner***

**LP Air Mixer**

**Liquid  
Propane  
Set Up**

**Natural  
Gas  
Set Up**

***Gas Line from  
Valve to the  
Burner***



# Leak Test Instructions



***WARNING! A leak test must be performed annually and each time a cylinder is hooked up or if a part of the gas system is replaced.***

***WARNING! Never use an open flame to check for gas leaks. Be certain no sparks or open flames are in the area while you check for leaks. Sparks or open flames will result in a fire or explosion, damage to property, serious bodily injury, or death.***

Leak Testing: This must be done before initial use, annually, and whenever any gas components are replaced or serviced. Do not smoke while performing this test, and remove all sources of ignition. Turn burner valve to the off position. Turn gas supply valve on.

Brush a half-and-half solution of liquid soap and water onto all joints and connections of the regulator, hoses, gas lines, air shutter and valves.

Bubbles will indicate a gas leak. Either tighten the loose joint or have the part replaced with one recommended by the HearthCo, Inc. service department. Have the Fire Pit / Fire Table inspected by a certified gas installer or contractor.

If the leak cannot be stopped, immediately shut off the gas supply, disconnect it, and have the grill inspected by a certified gas installer or contractor. Do not use the Fire Pit / Fire Table until the leak has been corrected.

# Lighting Instructions

**WARNING! Failure to follow these instructions could result in property damage, personal injury or death. Read and follow all warnings and instructions in this manual prior to operating this product.**

**STOP!** Read the information provided in this owner's manual prior to lighting your Fire Feature.

## **TO LIGHT YOUR FIRE FEATURE**

1. Turn the gas key clockwise to the off position
2. Wait 10 minutes for any gas to clear out.
3. Place a burning click n flame utility lighter on the surface of the media that covers the burner. Make sure your hand is not over the media that covers the burner.
4. After the click n flame utility lighter is burning and in position, rotate the gas key counter-clockwise 1/8 of a turn. If the gas does not light, turn the gas key to the off position. Check to make sure you have propane in your propane tank.

## **TO TURN OFF GAS TO YOUR FIRE FEATURE**

1. Rotate the gas key clockwise to the off position



## **Gas Hook-Up Instructions:**

**Piped in Propane Gas Hook-Up:** The piping up to the Fire Pit / Fire Table is the responsibility of the installer and piping should be located to fit in the cavity of the Fire Pit / Fire Table. Use a flexible metal connector to hook up the piped in gas lines to the gas valve that is supplied with the Fire Pit / Fire Table. Ensure that the connector does not pass through a wall, floor, ceiling or partition, and is protected from damage. Do not use a hose to connect the Fire Pit / Fire Table except to connect the cylinder regulator to the piping system. It must be connected with rigid pipe, copper tube or an approved flexible metal connector.

The installation must comply with National Fuel Gas code, ANSI Z223.1 in the United States. The gas supply pipe must be sufficiently sized to supply the BTU/h specified with the Fire Pit / Fire Table , based on the length of the piping run.

**Piped in Natural Gas Hook-Up:** The piping up to the Fire Pit / Fire Table is the responsibility of the installer and piping should be located to fit in the cavity of the Fire Pit / Fire Table. Use a flexible metal connector to hook up the piped in gas lines to the gas valve that is supplied with the Fire Pit / Fire Table. Ensure that the connector does not pass through a wall, floor, ceiling or partition, and is protected from damage. Do not use a hose to connect the Fire Pit / Fire Table except to connect the cylinder regulator to the piping system. It must be connected with rigid pipe, copper tube or an approved flexible metal connector.

The installation must comply with National Fuel Gas code, ANSI Z223.1 in the United States. The gas supply pipe must be sufficiently sized to supply the BTU/h specified with the Fire Pit / Fire Table , based on the length of the piping run.

## **Leak Testing Instructions:**

***WARNING! A leak test must be performed annually and each time a cylinder is hooked up or if a part of the gas system is replaced.***

***WARNING! Never use an open flame to check for gas leaks. Be certain no sparks or open flames are in the area while you check for leaks. Sparks or open flames will result in a fire or explosion, damage to property, serious bodily injury , or death.***

**Leak Testing:** This must be done before initial use, annually, and whenever any gas components are replaced or serviced. Do not smoke while performing this test, and remove all sources of ignition. Turn burner valve to the off position. Turn gas supply valve on.

Brush a half-and-half solution of liquid soap and water onto all joints and connections of the regulator, hoses, gas lines, air shutter and valves.

Bubbles will indicate a gas leak. Either tighten the loose joint or have the part replaced with one recommended by the Modern Blaze service department. Have the Fire Pit / Fire Table inspected by a certified gas installer or contractor.

If the leak cannot be stopped, immediately shut off the gas supply, disconnect it, and have the grill inspected by a certified gas installer or contractor. Do not use the Fire Pit / Fire Table until the leak has been corrected.



# Stain Touch up Guide Onyx

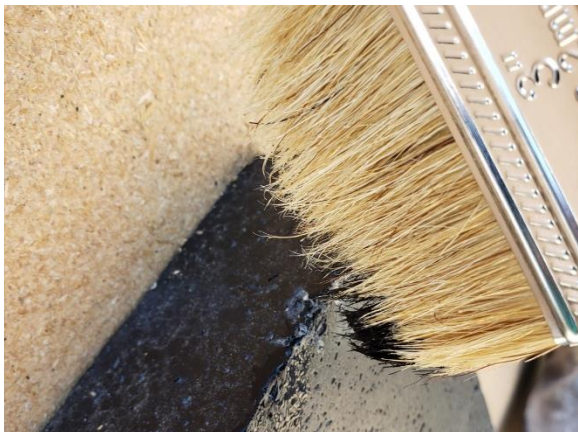
It is quite common to Knick or chip edges as you are putting together your fire table. The pieces are heavy, they make direct contact during and after the installation.



In just a few minutes you can go from this to this



Just dab the corner of the brush into the stain first



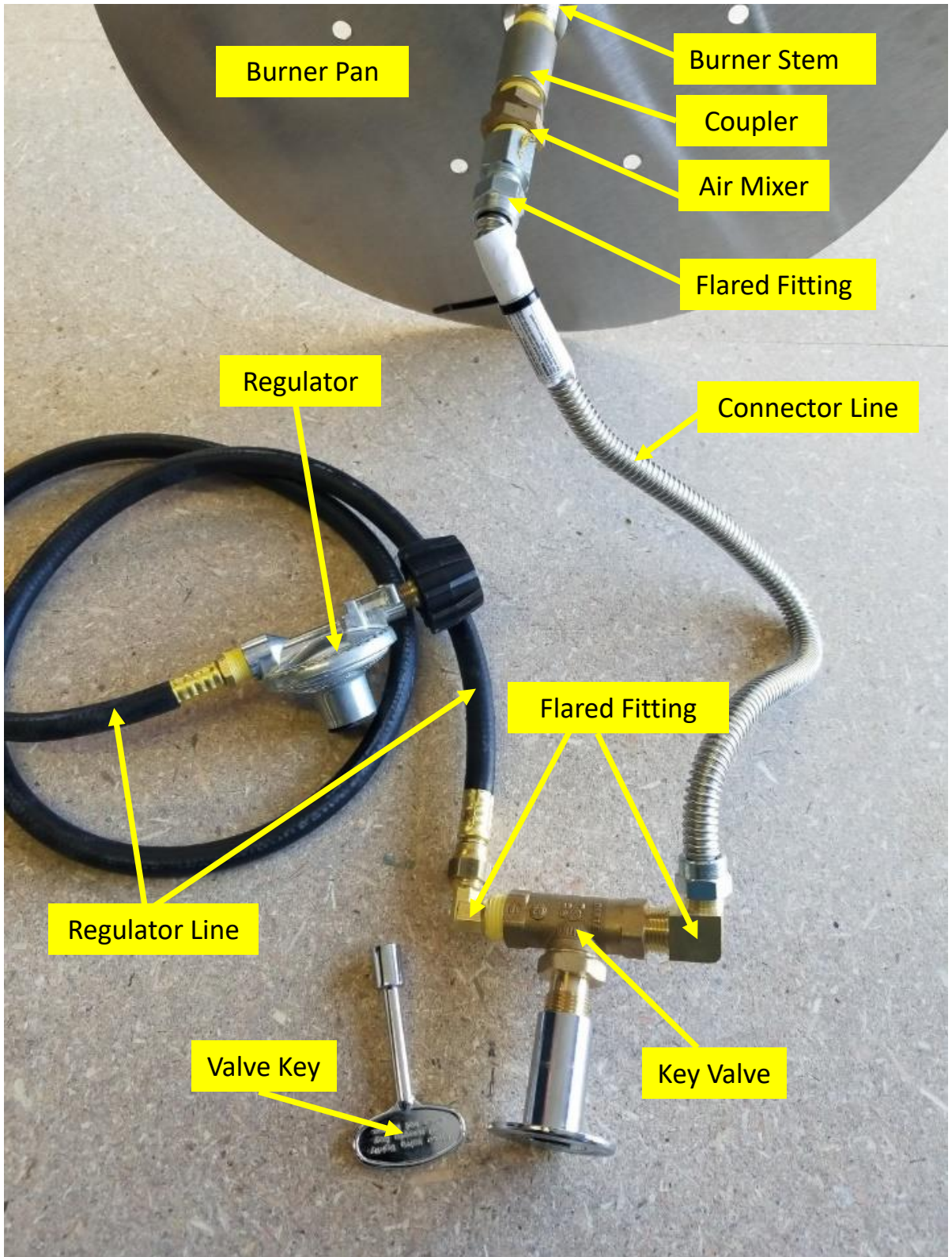
Using the brush simply dab the corner of the brush onto the areas you wish to repair, wipe off excess stain. Then brush the sealer over those areas as well. Let dry and away you go.

***This section covers  
Converting from  
LP (liquid propane)  
to  
NG (natural Gas)***

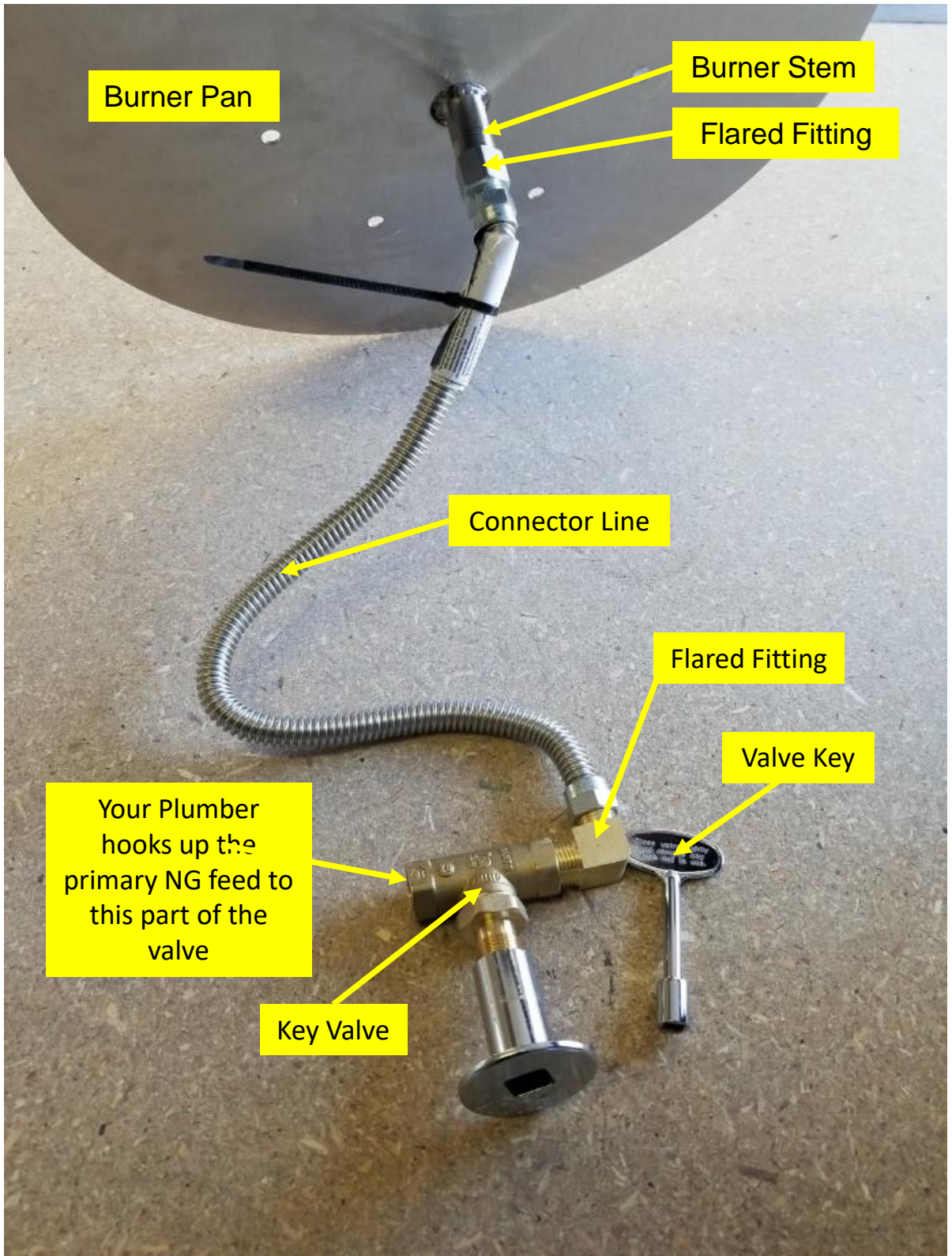
***And***

***Converting from  
NG (natural Gas)  
to  
LP (liquid propane)***

# What a Typical Liquid Propane Set Up Looks Like



# What a Typical Natural Gas Set Up Looks Like

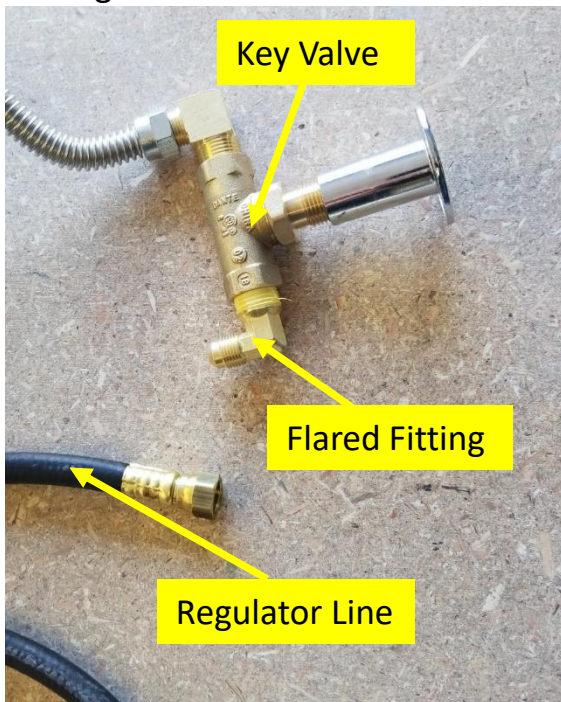


# Converting From Liquid Propane to Natural Gas

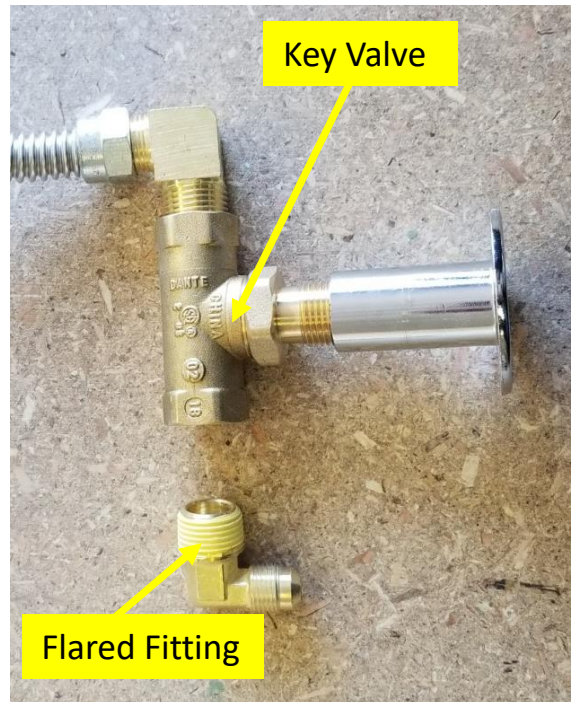
You will want to remove the regulator, regulator line and flared fitting from the key valve.



Remove regulator line from flared fitting



Remove flared fitting from key valve



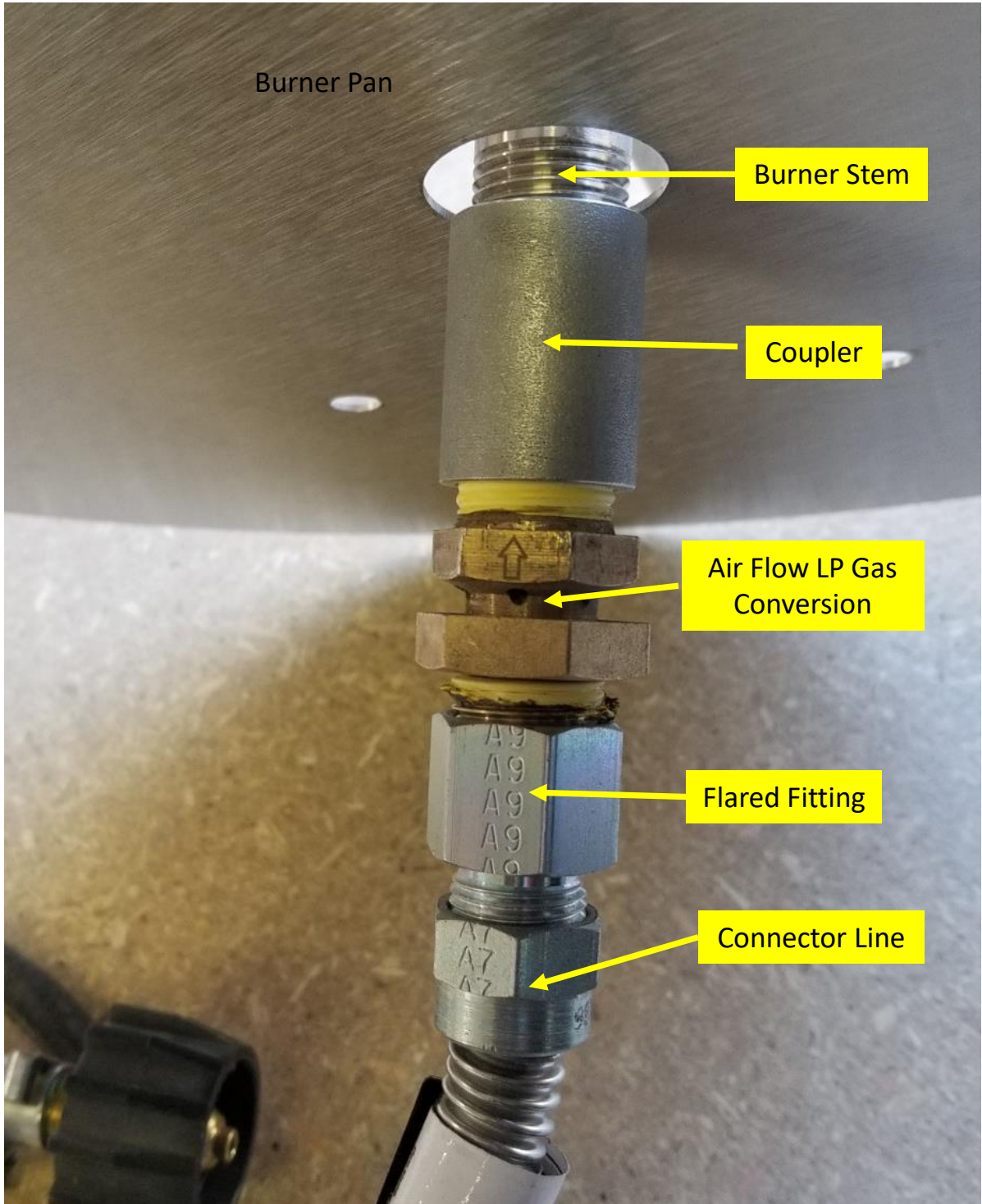
# Converting From Liquid Propane to Natural Gas

This is the completed NG (Natural Gas) set up and is now ready for your technician to complete the connection from the piped in gas lines to the key valve



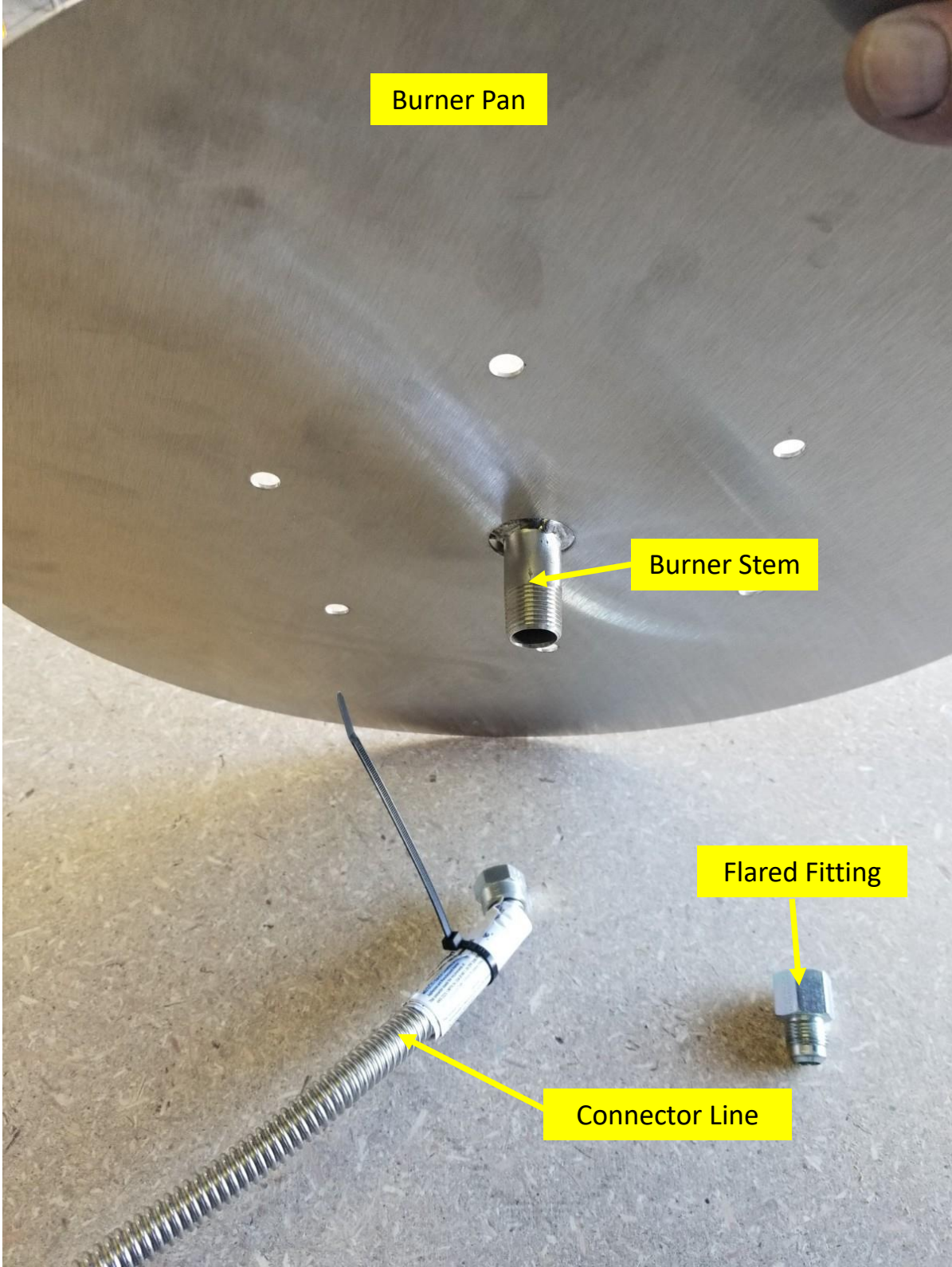
# Convert From Liquid Propane to Natural Gas

You will want to remove connector line first. Then remove the coupler, the air flow LP gas conversion and the flared fitting from the burner stem. Then attach the flared fitting directly to the burner stem and reattach the connector line to the flared stem.



# Convert From Liquid Propane to Natural Gas

This is what it should look like after removing the coupler, the air flow LP gas conversion and the flared fitting from the burner stem and connector line.





# Convert From Liquid Propane to Natural Gas

Tape the burner stem threads with gas pipe tape or sealant.



Fasten the burner stem to the flared fitting.



Fasten the connector line to the flared fitting. Make sure all connections are sealed and tight. **Do not use Teflon<sup>®</sup> tape or pipe sealant on any flare ends because you will not obtain a leak-free seal. Keep flare end of fitting free of grease, oil and thread sealant.**

