

Live longer outdoors

No-glow indoor-outdoor heaters



HEATSTRIP
USA



No-glow

Elegant

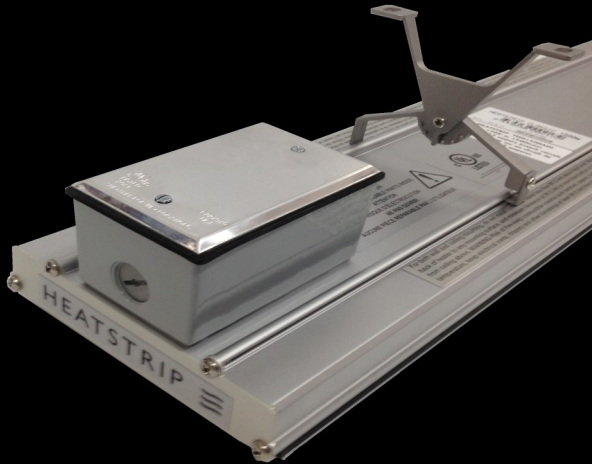
Electric



HEATSTRIP USA

Heatstrip heaters are a great way to keep you and your guests warm. Suitable for both indoors and outdoor applications. With the convenience of electric turn a switch and keep warm when the sun goes down.

Heatstrip can keep you warm on your deck, patio, bar, outdoor entertaining area or restaurant. For both residential and commercial applications, Heatstrip is a versatile heater used in luxury homes and premium commercial spaces the world over.



Safe, effective and radiant. Heatstrip electric heaters are a great way to heat your outdoor area. Using the same radiant technology as the sun, Heatstrip spreads warmth, to heat objects and people, underneath, it feels like a warm summer's day.

With a history of pioneering no-glow technology, Heatstrip is the elegant solution and iconic in shape. With a hard wearing black ceramic coating on the front, the no glow front panel is smooth and elegant.



Engineered to be reliable and hardwearing, Heatstrip features non-corrosive materials suitable for pool-side and coastal locations. Complete with a 12 month replacement warranty.

With daily deliveries anywhere in the United States, Canada or Mexico. Contact us for lead time to other regions.



Slim line

Radiant

Versatile

INSTALLATION

Available in 5 sizes and 3 different voltages, there is a Heatstrip heater to suit all applications. For heating small areas such as directly above a table, one Heatstrip will suffice. For larger areas multiple heaters will be required. Zone heating is also possible using our range of controllers.

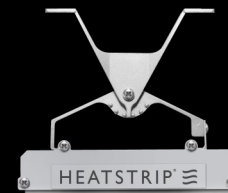
Installation is easy and can be built into your new or existing structure. Heatstrip is slimline and can be recessed into the ceiling or surface mounted with just 4" clearance to the ceiling.

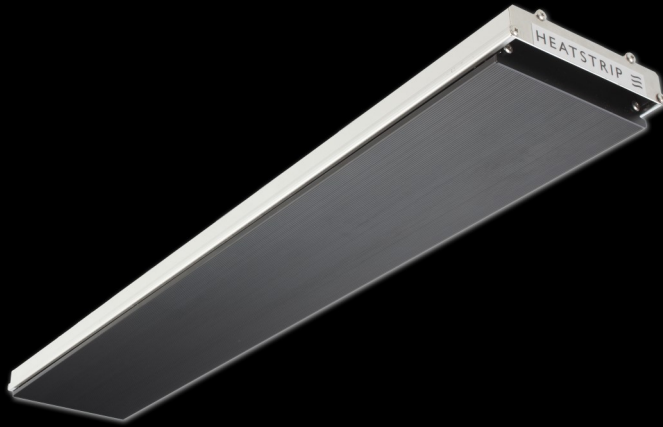
Coming complete with the standard mounting brackets, these versatile brackets allow the heater to be ceiling or wall mounted, then rotated to be angled flat, 22 or 45 degrees.

The optimal mounting height for Heatstrip is 6 to 9' from the floor. For higher ceilings, use our range of optional drop down kits.

Rated and tested to IP55, the highest in its class, Heatstrip can be safely hosed down and doesn't need any protection from the weather.

Heatstrip is both approved by UL and CSA for North America. For other countries contact us for your requirements.





Beautiful, elegant and effective, Heatstrip heaters will enhance your enjoyment of your entertaining area.



HEATERS

Heatstrip is available in 5 versatile sizes.

MINI

1500 Watts 120 Volts

Suitable for smaller installations and often used in multiples for sites with only 120 volts.

REGULAR

2400 Watts 240 Volts

Flexible model used with Recess Kit for a smart installation.

CAFÉ

2400 Watts 208 Volts

Used mainly for commercial buildings with 208 Volts power

LARGE

3200 Watts 240 Volts

Popular model for larger installations, used end to end

RESTAURANT

3200 Watts 208 Volts

Large Commercial projects with 208 Volt power.



MINI

REGULAR

LARGE

CAFÉ

RESTAURANT

CONTROLLERS

There are two great options for controlling your Heatstrips.



Dimmer Switch

Change the heat output between 50-100%

*One Switch per heater



Wireless Switch and Relay

Often used for larger commercial applications

Optional Remote Control

Wireless wall switch means easy to install

Zone heat, use 1 switch to turn ON multiple heaters

One relay per heater needed

ACCESSORIES

A range of mounting accessories is available to maximize the use of your entertaining area.

RECESS KIT



For a super slim line effect, Heatstrip can be flush mounted into the ceiling



DROP DOWN KIT

For ceilings higher than 9' the drop down kit will elegantly support your heaters



SUSPENSION MOUNT

For gabled or uneven ceilings, this allows the heater to be mounted with chains or wire.



POLE MOUNTED BRACKET

For trellis or pole mounted installations.



www.heatstripusa.com

1-877-222-0063 TOLL FREE

HEATSTRIP USA LLC.

4275 Executive Square #200, La Jolla, CA, 92037

616 Corporate Way, Suite 2-5771, Valley Cottage, NY, 10989