



# MANUAL

INTENSE **951** GRAVEL

2023

REGISTER YOUR BIKE AT:  
[www.intensecycles.com/pages/registerbike](http://www.intensecycles.com/pages/registerbike)



 SCAN ME

FOR TECHNICAL ASSISTANCE:  
Email [info@intensecycles.com](mailto:info@intensecycles.com)  
Phone +1 951-307-9211

**INTENSE**  
**951**  
SERIES

WELCOME TO THE  
INTENSE FAMILY!

CONGRATULATIONS ON  
YOUR NEW INTENSE  
951 GRAVEL BIKE!

AT INTENSE WE HAVE  
ONE GOAL -  
TO PROVIDE THE RIDE  
OF YOUR LIFE!

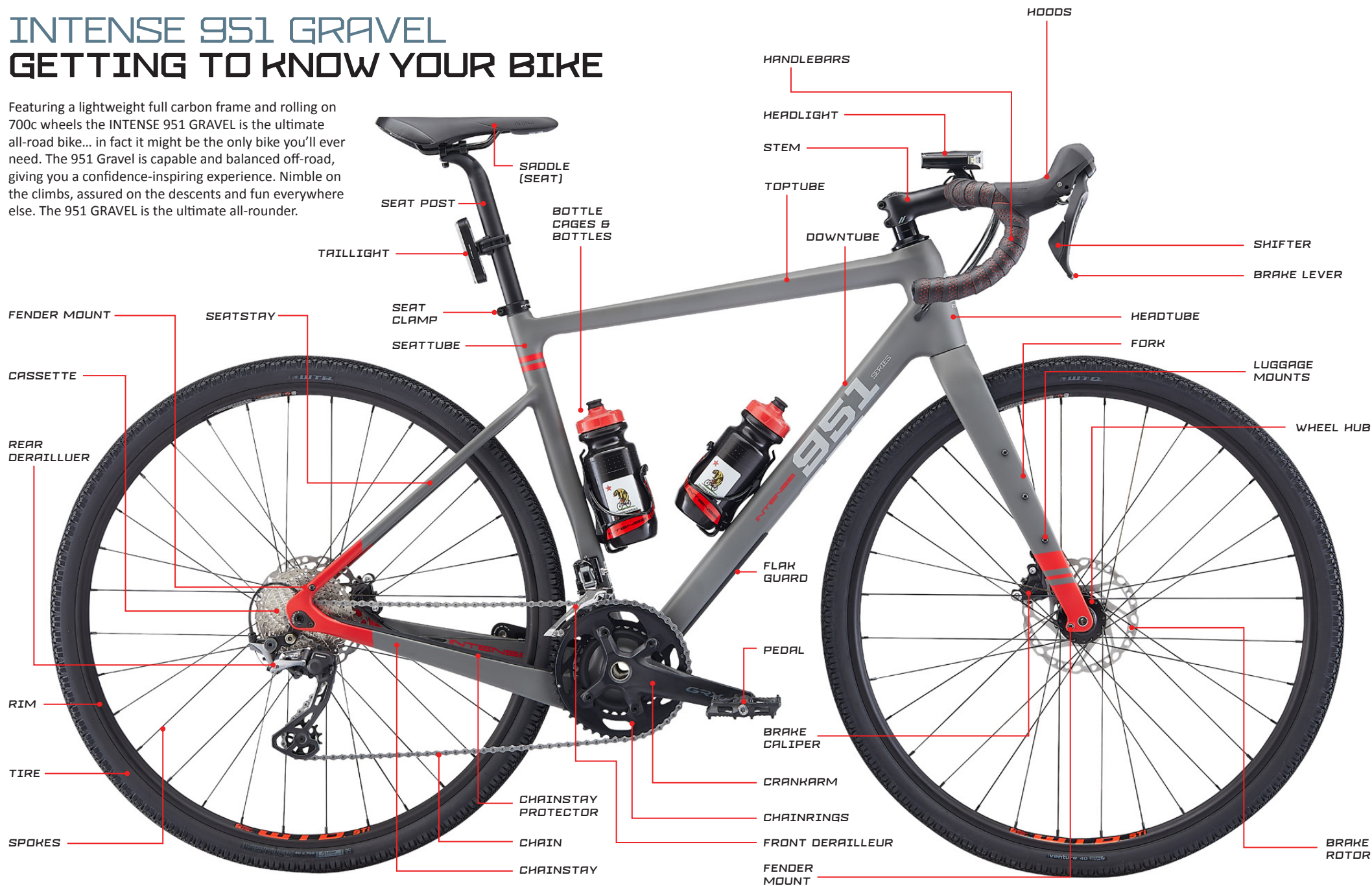
## CONTENTS

04-05	GETTING TO KNOW YOUR BIKE
06-07	GETTING TO KNOW YOUR TOOLS
08-19	SETUP GUIDE
20-21	GOMETRY
22-23	COMPONENT LIST
24-25	MAINTENANCE
26-27	PARTS LISTINGS
28-29	PARTS KITS

# INTENSE 951 GRAVEL

## GETTING TO KNOW YOUR BIKE

Featuring a lightweight full carbon frame and rolling on 700c wheels the INTENSE 951 GRAVEL is the ultimate all-road bike... in fact it might be the only bike you'll ever need. The 951 Gravel is capable and balanced off-road, giving you a confidence-inspiring experience. Nimble on the climbs, assured on the descents and fun everywhere else. The 951 GRAVEL is the ultimate all-rounder.



## WHAT ELSE IS IN THE BOX? GETTING TO KNOW YOUR TOOLS

The first thing to do is familiarize yourself with the contents of the toolbox, included in your bike box. If you are confident with tools then great, if you are not, take your time looking through everything and getting to know how each item works. Always make sure you use the correct size tool for the job, making sure that it fits snugly and securely on the bolt, screw or component you are working on. When inserting any bolts, don't rush it, make sure that the thread is going in straight and smoothly, we don't want any cross-threads!

The two main tools that you will use to assemble your bike are: 3-way Y-Wrench Multi-HEX/Allen tool (2), and a torque wrench (5). The torque wrench is a tool that stops you from under or over tightening screws, nuts and bolts – that measurement is made in Nm, Newton Meter. Push the handle of the torque wrench to the desired setting, then using the correct 'bit' tighten your bolt or screw as normal. Depending on what they do, different bolts/screws have different torque settings, so be sure to check the correct settings in our setup guide from page 9 onwards.

1. Tubeless sealant
2. 3-way Y-wrench Multi-HEX/Allen tool (4mm, 5mm, 6mm)
3. Torque wrench driver bits
  - a) Phillips head screwdriver
  - b) Torx 25
  - c) 2mm HEX/Allen driver
  - d) 2.5mm HEX/Allen driver
  - e) 3mm HEX/Allen driver
  - f) 5mm HEX/Allen driver
4. Mini Hand Pump with Presta Valve plus bottle cage mounting bracket
5. Torque Wrench



### WANT TO GO TUBELESS?

Your WTB wheels are tubeless ready and you will find two small bottles of tubeless sealant, one for each wheel contained within the bike box. Go to [intense951.com/pages/techvideos](https://www.intense951.com/pages/techvideos) for our handy guide on converting your wheels from tubes to tubeless.





**NEED HELP ?**  
DO NOT RETURN TO THE STORE

CALL US AT: +1 951.307.9211  
OR EMAIL: [INFO@INTENSECYCLES.COM](mailto:INFO@INTENSECYCLES.COM)

OUR RIDER SUPPORT TEAM LOOKS FORWARD  
TO HELPING WITH ANY QUESTIONS.

## INTENSE 951 GRAVEL SETUP GUIDE

Your new 951 GRAVEL is almost ready to go, you just need to do a few things to get your bike ready for the ride. Over the next few pages we'll show you how to assemble your bike. After that, you'll set your saddle height, and check your tire pressure to ensure a great first ride.

We have a series of in-depth and detailed videos on our website that go through the whole process of building and preparing your bike – including technical videos on tuning your gears, and much more.

**GO TO [INTENSE951.COM/PAGES/TECHVIDEOS](https://www.intense951.com/pages/techvideos)**

When we talk about the drive-side of your bike we are talking about the side that has the chain and gearing on it. If you were sitting on your bike facing forward this would be the right-hand side. The left-hand side of the bike is known as the non-drive side.

If you own a bike stand, great – just extend the seatpost to its full height (Step 3) and put the bike in the stand. Only use the seatpost to clamp the bike to the stand. For those of you who don't have a bike stand you can use the box the bike came in to help you assemble your bike as outlined over the following pages.

**WE ARE HERE TO HELP!**

If at any time you feel unsure about what you are doing then please contact us at:  
INTENSE +1 951.307.9211

## STEP 01

### REMOVE BIKE FROM THE BOX



**1A** Pull out accessory box (with bottles and cages) 2 each.

**1B** Pull whole bike out and set on a nice mat leaning against a wall safely, or hanging over the front of the box as shown above.



**1C** Reach in and grab second accessory box. This box includes your tool kit, operating manual, reflectors and pedals. You need the tools to complete the build.

**1D** Begin carefully removing zip ties from the bike with wire snips.



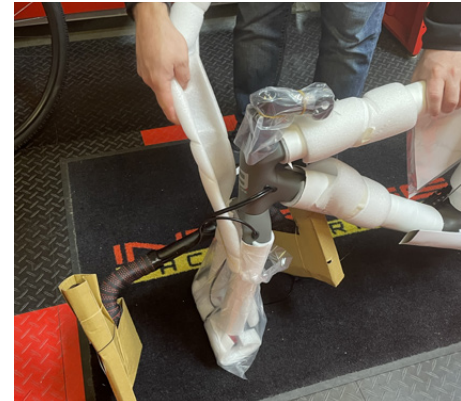
**1E** Remove two zip ties from the seatpost and rear wheel.



**1F** Remove three zip ties from the front wheel, then two from the handlebar. This will free the front wheel from the bike and it can be placed to the side. You can now install the handlebars.

## STEP 02

### INSTALL HANDLEBARS



**2A** Remove packaging from stem and handlebars.



**2B** Loosen both stem bolts by using the 5mm allen on the 3-way tool, this will allow you to rotate the stem in a clockwise direction until it is forward-facing.

## STEP 02

### INSTALL HANDLEBARS (CONTINUED)

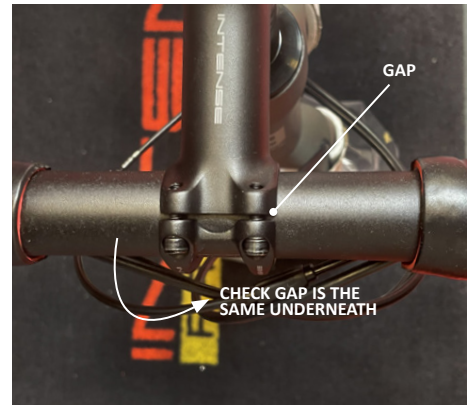


**2C** Next remove the faceplate by loosening the four faceplate bolts with the 4mm allen on the 3-way tool.

**2D** Now place the handlebars on the stem and begin placing the bolts back in the faceplate.



**2E** Start at top left, then top right and bottom left and bottom right. Hand-tighten the bolts then rotate the handlebars up. Then snug the top left corner tightening in a cross pattern with the 4mm allen.



**2F** After tightening, check to make sure the gap on the top and bottom are equal.

## STEP 03

### INSTALL SEATPOST



**3A** Take seat and seatpost and place into seattube until the number 3 mark. Leave packaging on seat to protect seat for rest of build.



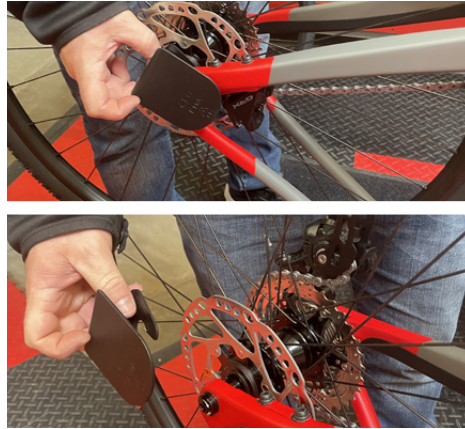
**3B** Take torque wrench with 4mm allen and torque to 6-8Nm. You will adjust final seat height on step 11.

## STEP 04

### REMOVE REMAINING PACKAGING



**4A** Flip bike over and remove remaining packaging.



**4B** Remove protector from rear wheel.

## STEP 05

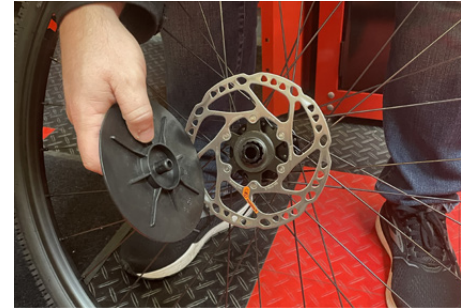
### INSTALL FRONT WHEEL



**5A** Loosen the front axle from the fork using the 6mm 3-way tool.



**5B** Once you have loosened the axle you can then pull the axle through the drop outs of the fork. Keep the axle handy as you will need to re-install once the front wheel is in place.



**5C** Remove the black plastic disc side protector (top photo). Then take the axle you have just removed from the fork and push back through the hub to pop out the spacer on the non-disc side. The hub end cap will most likely pop out with the spacer (bottom photo).



REMOVE SPACER



**5D** If the spacer and end cap come out still connected, you will need to separate the two pieces with your hand (top photo). You can discard the spacer/protector and then reinsert the hub end cap as shown in the image (bottom photo). Push the end cap in until it fully seats itself into the hub.



**5E** Now take the front wheel and install by placing the disc rotor in between the brake pads at the same time making sure the hub end caps slide into the dropout grooves on the fork.



**5F** Once the wheel and hub are sitting flush within the fork you can take the front axle and place it into the hub, push through to the end and gently turn to engage the thread in the opposite end.



## STEP 05

### INSTALL FRONT WHEEL (CONTINUED)

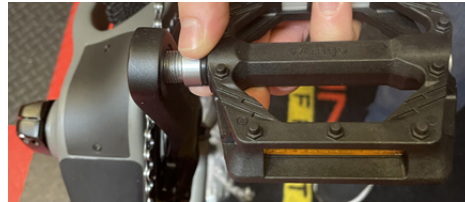


**5G** Once the axle is in place tighten using the 6mm allen on the 3-way wrench. Be careful not to overtighten at this stage.

**5H** To reach the correct tightness on the axle use a 6mm bit on the torque wrench and tighten to 10Nm.

## STEP 06

### INSTALL THE PEDALS



**6A** Bicycles have specific left and right pedals, and the left-hand side pedal has an opposite thread on it. You need to make sure that you have the correct pedal for each side of the bike. You will see on the pedal axle CR-R (or R) for the right and CR-L (or L) for the left. The right-hand side (drive-side) pedal tightens up normally in a clockwise direction.

**6B** The left-hand side (non-drive side) pedal tightens up in a counterclockwise direction. Be cautious that the pedals are put in nice and straight, being careful not to cross-thread the crankarms. A spot of grease on the thread is good to use here. You can use either a 6mm Allen key or a 15mm spanner/wrench, tighten to 47-54Nm.



## STEP 07

### RUN THROUGH THE GEARS

Now is a good time to run through the gears to check that they are working correctly. To do this turn the cranks (where the pedals are attached) so that the wheel begins to spin. With your hand shift through the gears (being careful not to trap anything in the chain). If you are having any issues with the gears, please checkout our Tech Video Series on our website:

[intense951.com/pages/techvideos](https://intense951.com/pages/techvideos)

## SHIFTING

- Shift by using the levers on the left side of the handlebar. The long lever shifts the longest cog and the little one shifts back down. The long outer shift lever should always be pushed all the way over when shifting to the large chainring in the front to ensure a clean and positive shift.
- When shifting back use the shorter, littler inner shift lever.
- Troubleshooting – if you encounter trouble when shifting, the front shifter has a built in trim feature that allows micro adjustment of the front derailleur when in the long chainring.



## STEP 08

### ENSURE PROPER BRAKE FUNCTION

Squeeze both the front and rear brakes to ensure they are working properly by making sure you feel them stop on the front/rear rotors.

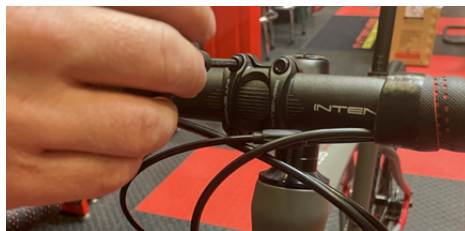
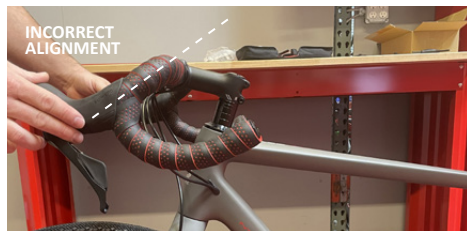


## STEP 09 ADJUST SEAT HEIGHT

Remove seat packaging. Loosen seat clamp bolt, push seat up or down to fit in line with hip. Retighten seat clamp bolt with 4mm allen and torque to 6Nm.



## STEP 10 ADJUST HANDLEBARS



**10A** It's important to make sure that your handlebars are lined up correctly. The bar should be in line with the frame. The top photo shows the bars incorrectly lined up while the bottom photo shows the correct alignment.

**10B** To adjust the bars, loosen the bolts on the faceplate with a 4mm allen and rotate the handlebars into place. Make sure the faceplate is centered on the bars by using the lines on the bar as a reference. Once in position, tighten the bolts and torque to 6Nm using the 4mm allen.



## STEP 11 ADJUST THE HOODS

The hoods should come adjusted but if you need to adjust any, lift up hood flap and loosen the bolt using a 5mm allen and pivot in or out the hoods. Take care not to remove bolt all the way because it's difficult to reinstall. Hoods should come adjusted already.



## STEP 12 TORQUE STEM

Using the 5mm allen on the torque wrench, torque the stem to 7Nm. Note: The stem lists a max torque value of 11Nm, however, this bolt only needs to be torqued to 7Nm.



## STEP 13 CHECK TIRE PRESSURE

The ideal tire pressure setting is determined by three factors: rider weight, type of terrain and the desired balance of comfort and traction. For the 951 Gravel bike we recommend 30-60psi. It is always a good idea to inspect your tires for tears and punctures before and after every ride. Use hand pump or other pump to adjust tire pressure.



## STEP 14 INSTALL HEADLIGHT AND TAILLIGHT

To install place the headlight on the handlebar and secure strap.

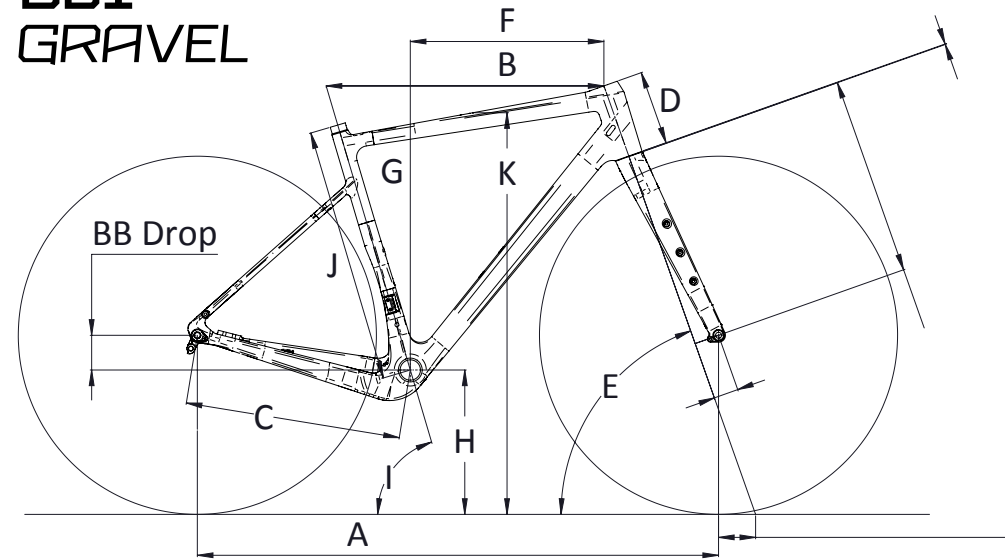
To use headlight press the power button. There will be different light settings. Press the button to cycle through the different light settings. Hold power button to shut off.

To install the taillight, place the taillight on the seatpost and secure strap.



# GEOMETRY

## 951 GRAVEL



[MM / INCH]

SIZE	SMALL	MEDIUM	LARGE	XL
WHEELBASE (A)	1037mm / 41"	1050mm / 41.4"	1053mm / 41.5"	1067mm / 42"
TOPTUBE LENGTH (B)	545mm / 21.5"	560mm / 22"	577mm / 22.7"	595mm / 23.4"
CHAINSTAY LENGTH (C)	435mm / 17.1"	435mm / 17.1"	435mm / 17.1"	435mm / 17.1"
HEADTUBE LENGTH (D)	135mm / 5.3"	150mm / 5.9"	170mm / 6.7"	190mm / 7.5"
HEADTUBE ANGLE (E)	70.3°	70.5°	72°	72.5°
REACH (F)	380mm / 15"	390mm / 15.4"	400mm / 15.7"	412mm / 16.2"
STACK (G)	558mm / 22"	575mm / 22.6"	596mm / 23.5"	619mm / 24.4"
BB HEIGHT (H)	291mm / 11.5"	291mm / 11.5"	291mm / 11.5"	291mm / 11.5"
BB DROP	70mm / 2.7"	70mm / 2.7"	70mm / 2.7"	70mm / 2.7"
SEATTUBE ANGLE (I)	73.5°	73.5°	73.5°	73.5°
SEATTUBE LENGTH (J)	495mm / 19.5"	515mm / 20.3"	535mm / 21.1"	555mm / 21.8"
STANDOVER HEIGHT (K)	792mm / 31"	810mm / 32"	831mm / 32.7"	851mm / 33.5"
SEATTUBE MAXIMUM INSERTION DEPTH FOR SEATPOST	220mm / 8.7"	240mm / 9.4"	260mm / 10.2"	280mm / 11"
LOWER HEADSET STACK HEIGHT	1mm / .04"	1mm / .04"	1mm / .04"	1mm / .04"
FORK AXLE TO CROWN	400mm / 15.7"	400mm / 15.7"	400mm / 15.7"	400mm / 15.7"
FORK OFFSET	50mm / 2"	50mm / 2"	50mm / 2"	50mm / 2"
FORK TRAIL	76mm / 3"	75mm / 2.9"	65mm / 2.6"	61mm / 2.4"
FRONT CENTER	612mm / 24"	625mm / 24.6"	628mm / 24.7"	641mm / 25"
BB HEIGHT BASED ON TIRE OD	722mm / 28.4"	722mm / 28.4"	722mm / 28.4"	722mm / 28.4"



## COMPONENT LIST

Model: INTENSE 951 GRAVEL  
 Model Year: 2023  
 Frame sizes available: Small (S), Medium (M), Large (L) and Extra Large (XL)

FRAME	Carbon Fiber with All Road/Gravel Specific Geometry
FORK	Carbon Fiber All Road/Gravel Specific
HEADSET	INTENSE Recon
STEM	INTENSE Recon Gravel 31.8mm +/- 6° SM - 70mm / MD-LG - 90mm / XL - 100mm
HANDLEBARS	INTENSE Recon Gravel 31.8mm, 12° Flare SM - 400mm / MD-LG - 420mm / XL - 440mm
BAR TAPE	INTENSE Anti-Slip
BRAKES	Shimano GRX BR-RX400
BRAKE LEVERS	Shimano GRX ST-RX600
BRAKE ROTORS	Shimano Deore SM-RT64 160mm with Centerlock
SHIFTERS	Shimano GRX ST-RX600 11-speed
REAR DERAILLEUR	Shimano GRX RD-RX810 11-speed
FRONT DERAILLEUR	Shimano GRX FD-RX810 11-speed
CRANKS	Shimano GRX FC-RX600 11-speed 30-46t SM - 170mm / MD - 172.5mm / LG - XL - 175mm
BOTTOM BRACKET	Shimano BB-RS500 Press Fit
CASSETTE	Shimano 105 CS-HG70011 11-speed, 11-34t
CHAIN	KMC X11 EPT 11-speed
RIMS	WTB ST i23 TCS 2.0 700c front/rear
SPOKES	DT-Swiss Champion
HUBS	INTENSE Gravel Alloy Hubs
WHEELSET	WTB ST i23 TCS 2.0 700c front/rear
TIRES	WTB Venture 700 x 40 Dual DNA Compound front/rear (Tubeless Ready)
SADDLE	Fizik Terra Alpaca X5
SEATPOST	INTENSE Recon Gravel 15mm offset (27.2mmx350mm)

### COMPONENT MANUAL ONLINE RESOURCE

We have a full resource available online for all of the parts fitted to this bike. Please visit: [intense951.com/pages/bikemanuals](https://www.intense951.com/pages/bikemanuals) where you will find handy links to the manuals of the components listed above.

# LOOKING AFTER YOUR BIKE MAINTENANCE

You have purchased a high-performance bicycle which requires a certain level of service and maintenance to sustain the level of performance your frame was designed around. Proper care will also ensure the bike is safe to ride at all levels. It is important to read and understand the carbon care information as well as follow the maintenance schedule and inspect your bicycle before each ride. These will not only help to limit or avoid costly repairs but will also help to avoid injury due to service neglect and component failure.

## CARBON CARE

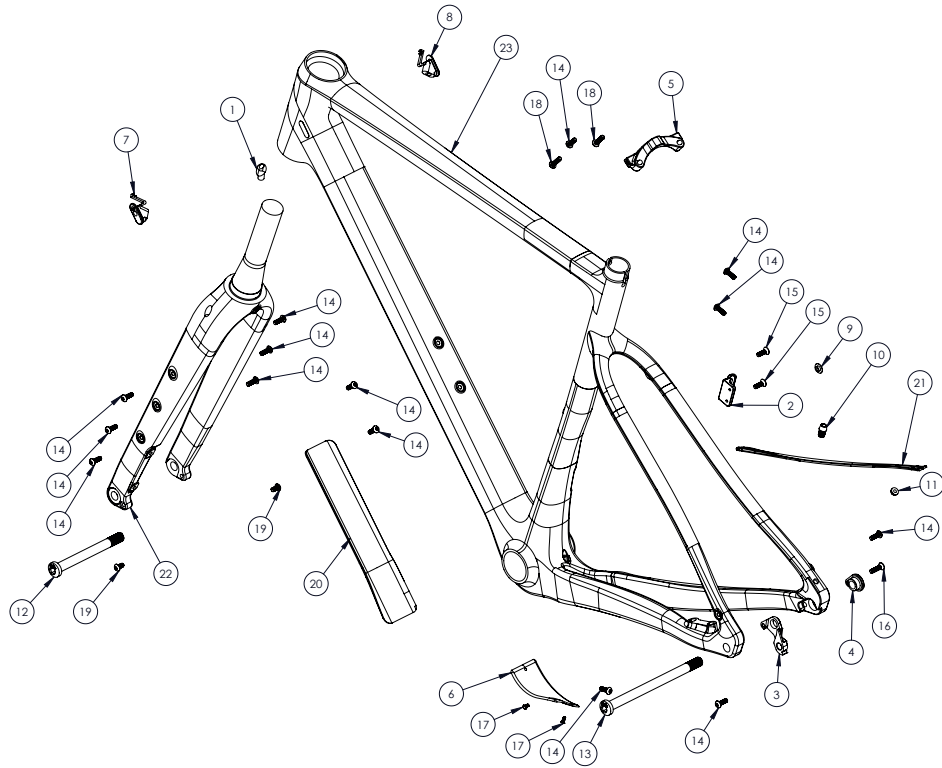
INTENSE, LLC employs advanced composite techniques and material in our frames which do require a certain level of care and maintenance to ensure a safe experience at the high level of performance each frame is designed around. Not following these guidelines will decrease the level of performance and possibly cause injury or death.

- Use a soft cloth with warm soapy water to clean the carbon surfaces. Do not use high pressure washers, abrasive cloths or cleaners.
- Be sure all frame surfaces in contact with cables are protected. Cable housing rubbing on carbon can wear over time.
- Be sure brake levers, handlebar ends and the fork crown do not contact the frame at full rotation.
- Never clamp any part of a carbon frame in a bike stand or car rack.
- Always inspect your frame if you experience any chain suck.
- Always inspect your frame in full after a crash to be sure there is no damage. Look for cracks, dents or loose fibers. If you discover damage in any degree it's best to have your frame inspected by a qualified INTENSE, LLC dealer. Any direct impact to the frame can cause serious structural damage.
- Use high-grade waterproof grease on seatpost and headset bearing contact areas with the carbon.
- Never ream or face a carbon frame.
- Be sure to follow all recommended torque settings.
- Use only genuine replacement parts for safety-critical components.

# MAINTENANCE SCHEDULE

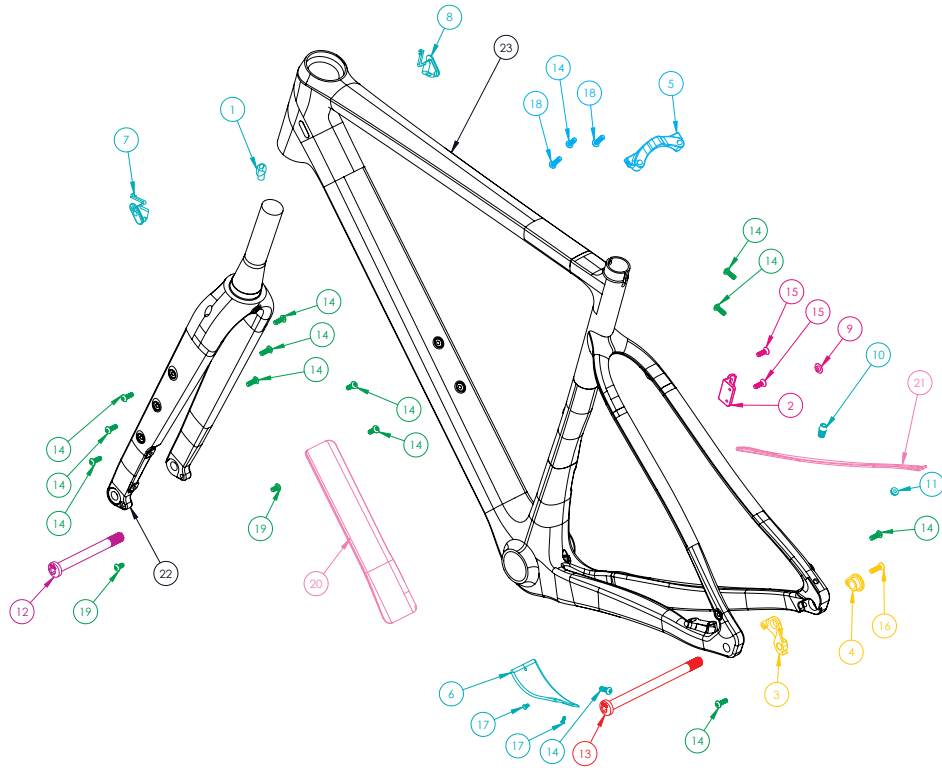
	Action	Every Ride	500 Miles or 1 Month	2000 Miles or 6 Months	4000 Miles 1 Year
TIRES	Check air pressure, inspect tread and sidewalls for tears and punctures	X			
CHAIN	Brush off and lubricate	X			
BRAKES	Squeeze brakes and confirm function	X			
GENERAL	Clean complete bike of mud and debris	X			
HEADSET	Check adjustment		X		
BOX LINK	Add grease thru Zerk fittings		X		
SPOKES	Inspect for damage, check tension		X		
DERAILLEUR	Cables inspect and lube			X	
SEATPOST	Clean and regrease interface with frame			X	
HEADSET	Disassemble stem, headset and fork. Check bearings for pitting and wear			X	
HUBS	Pull wheels off, check hub bearings for pitting and wear			X	
BRAKES	Replace brake pads			X	
CHAIN	Inspect for damage and check for stretching			X	
GENERAL	Complete Tune-Up				X

# INTENSE 951 GRAVEL PARTS LISTINGS



ITEM	PART No.	DESCRIPTION	QTY.	TORQUE SPEC.
1	140040	Guide Cable YF (04011A) Black 5 mm ID	1	N/A
2	180000	FD Mount Bracket, 951 Gravel	1	N/A
3	180001	Rear Derailleur Hanger, 951 Gravel	1	N/A
4	180002	Rear Derailleur Hanger Bracket, 951 Gravel	1	N/A
5	180003	Seatstay Bridge Bracket, 951 Gravel	1	N/A
6	180004	BB Cable Routing Cover, 951 Gravel	1	N/A
7	180005	Left D/T Cable Guide 2 Port, 951 Gravel	1	N/A
8	180006	Right D/T Cable Guide 1 Port, 951 Gravel	1	N/A
9	180007	F/D Grommet, 951 Gravel	1	N/A
10	180008	F/D Grommet Routing, 951 Gravel	1	N/A
11	180009	R/D Grommet, 951 Gravel	1	N/A
12	180010	Front Axle, 951 Gravel	1	10 Nm / 90 in-lbs
13	180011	Rear Axle, 951 Gravel	1	10 Nm / 90 in-lbs
14	410072	BHCS, Button Head, M5 x 15	14	2 Nm / 18 in-lbs
15	410073	FHCS, Flat Head, M5 x 16	2	2 Nm / 18 in-lbs
16	410074	FHCS, Flat Head, M4 x 19	1	2 Nm / 18 in-lbs
17	410075	FHCS, Flat Head, M3 x 8	2	2 Nm / 18 in-lbs
18	410076	BHCS, Button Head, M5 x 19	2	2 Nm / 18 in-lbs
19	410077	BHCS, Button Head, M5 x 10	2	2 Nm / 18 in-lbs
20	500522	Flak Guard Downtube, 951 Gravel	1	N/A
21	500523	Flak Guard Chainstay, 951 Gravel	1	N/A
22		951 Gravel Fork	1	N/A
23		951 Gravel Frame	1	N/A

# INTENSE 951 GRAVEL PARTS KITS



<b>Frame Protection Kit</b>	<b>IT150186</b>	<b>Frame Protection Flak Guard Kit 951 Gravel</b>
20	IT150186	Frame Protection Flak Guard 951 Gravel Down Tube
21	IT150186	Frame Protection Flak Guard 951 Gravel Chain Stay
<b>Derailleur Hanger Kit Rear</b>	<b>IT150187</b>	<b>Derailleur Hanger Kit Rear 951 Gravel</b>
3	IT150187	Derailleur Hanger Rear 951 Gravel
4	IT150187	Derailleur Hanger Bracket Rear 951 Gravel
16	IT150187	Fastener FHCS M4 x 19
<b>Derailleur Hanger Kit Front</b>	<b>IT150188</b>	<b>Derailleur Hanger Kit Front 951 Gravel</b>
2	IT150188	Derailleur Hanger Front 951 Gravel
9	IT150188	Grommet Front Derailleur 951 Gravel
15	IT150188	Fastener FHCS M5 x 16
<b>Seat Stay Bridge Kit</b>	<b>IT150189</b>	<b>Seat Stay Bridge Kit 951 Gravel</b>
5	IT150189	Seat Stay Bridge 951 Gravel
14	IT150189	Fastener BHCS M5 x 15
18	IT150189	Fastener BHCS M5 x 19
<b>Axle Kit Rear</b>	<b>IT150190</b>	<b>Axle Kit Rear 951 Gravel</b>
13	IT150190	Axle Rear 951 Gravel
<b>Axle Kit Front</b>	<b>IT150191</b>	<b>Axle Kit Front 951 Gravel</b>
12	IT150191	Axle Front 951 Gravel
<b>Guide/Grommet Kit</b>	<b>IT150192</b>	<b>Guide/Grommet Kit 951 Gravel</b>
1	IT150192	Guide Cable S275C/P29/ACV/REC/M16 YF-04011A
6	IT150192	Cable Guide Cover BB 951 Gravel
7	IT150192	Cable Guide Left Downtube 2-Port 951 Gravel
8	IT150192	Cable Guide Right Downtube 2-Port 951 Gravel
9	IT150192	Grommet Front Derailleur 951 Gravel
10	IT150192	Grommet Routing Front Derailleur 951 Gravel
11	IT150192	Grommet Rear Derailleur 951 Gravel
14	IT150192	Fastener BHCS M5 x 15
17	IT150192	Fastener BHSC M3 x 8
<b>Bolt Kit Complete</b>	<b>IT150193</b>	<b>Bolt Kit Complete 951 Gravel</b>
14	IT150193	Fastener BHCS M5 x 15
15	IT150193	Fastener FHCS M5 x 16
16	IT150193	Fastener FHCS M4 x 19
17	IT150193	Fastener BHSC M3 x 8
18	IT150193	Fastener BHCS M5 x 19
19	IT150193	Fastener BHCS M5 x 10



**NEED HELP?**

**DO NOT RETURN TO THE STORE**

CALL US AT: +1 951.307.9211

OR EMAIL: [INFO@INTENSECYCLES.COM](mailto:INFO@INTENSECYCLES.COM)

**OUR RIDER SUPPORT TEAM LOOKS FORWARD  
TO HELPING WITH ANY QUESTIONS.**

**INTENSE 951** GRAVEL