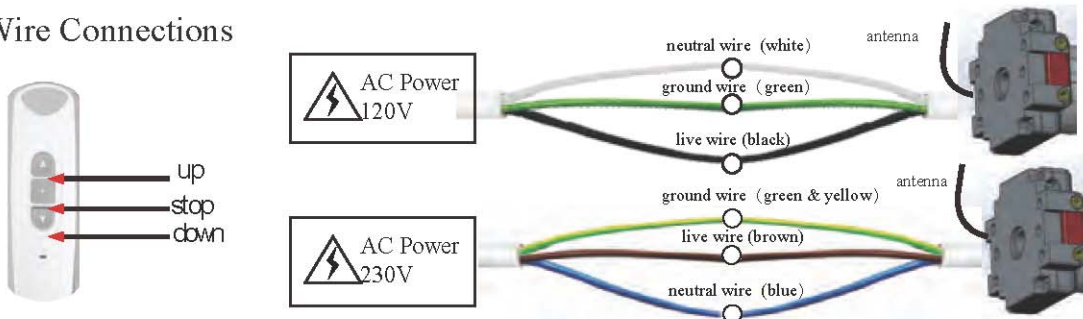


1 Technical Specifications

Power: AC 230V/50Hz or 110V/60Hz Up to 15 remotes (or channels) may be assigned to each motor
 Protection Index: IP 44 Thermal protection will engage after 4 minutes of continuous running
 Loaded Power 400w

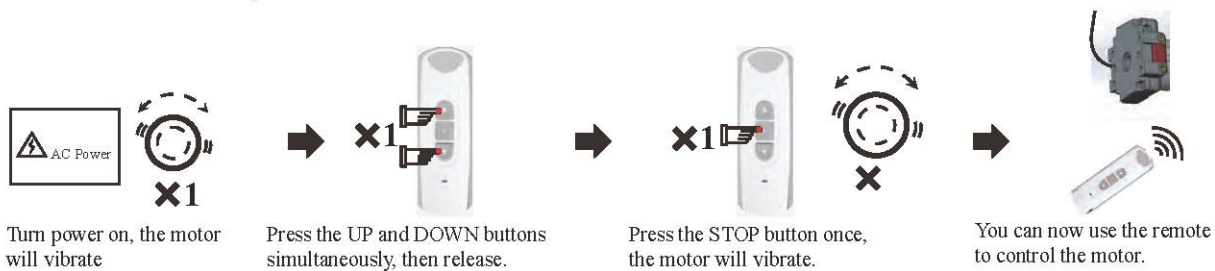
2 Wire Connections



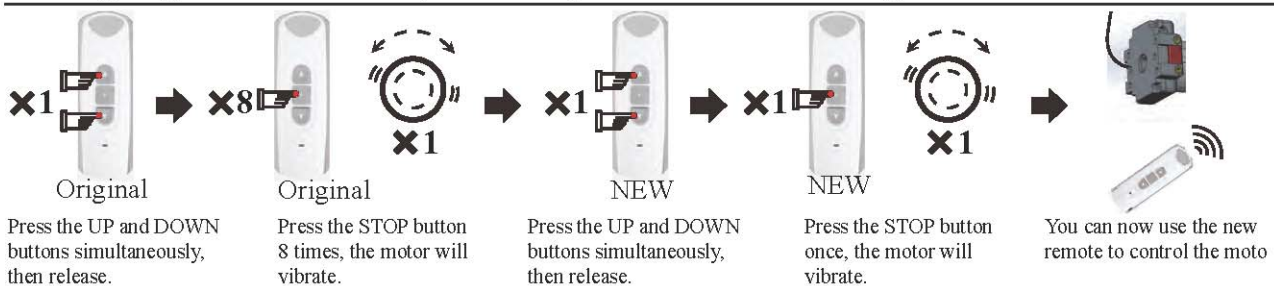
3 Assigning a remote to a motor (You have 10 seconds to complete the task)

Assigning a remote to a motor (You have 10 seconds to complete the task)

For the first remote assigned

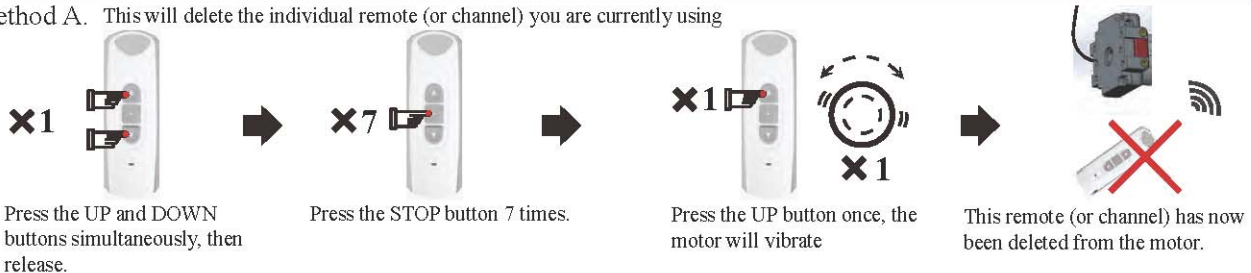


4 Assigning an extra remote (or channel) to a motor via the original remote

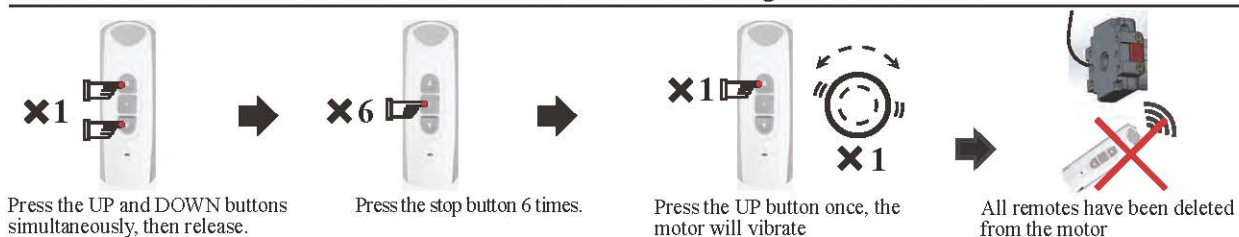


5 Deleting a remote (or channel) from a motor (You have 10 seconds to complete the task)

Method A. This will delete the individual remote (or channel) you are currently using

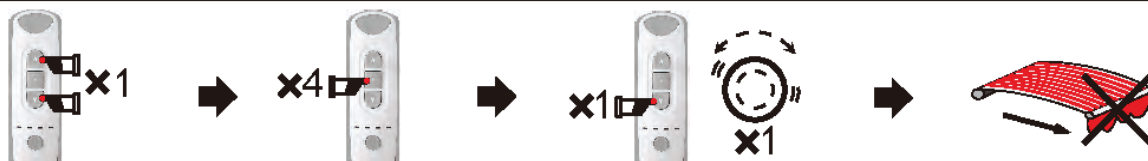


Method B. **WARNING:** This will delete ALL remotes assigned to the motor



⑥ Setting the limits (follow steps 1 - 5 below precisely)

01. First delete outer limit (just in case one was set during testing)



Press the UP and DOWN buttons simultaneously, then release.

Press the stop button 4 times.

Press the Down button once, the motor will vibrate

The outer limit has been deleted

02. Confirm the motors direction - **THE DOWN BUTTON MUST OPEN THE AWNING**



Press the down button on the remote

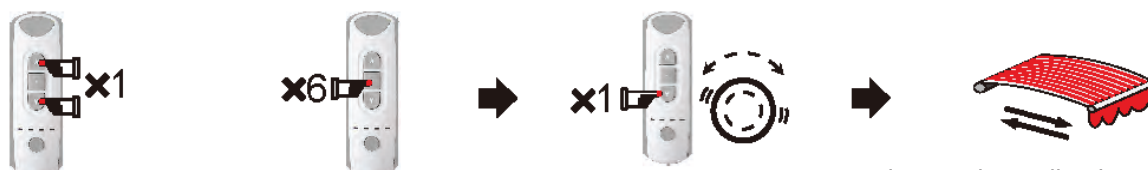
Check to see if the Awning opens then press stop.

Note:

If the Awning opens, go to step 4 below to set the outer limit.

If the Awning did not open, go to step 3 below to change direction

03. Changing the motor's direction (You have 10 seconds to complete the task)



Press the UP and DOWN buttons simultaneously, then release.

Press the STOP button 6 times.

Press the DOWN button once, the motor will vibrate.

The IN and OUT directions of the motor have been reversed. Repeat step 2.

04. Setting the outer limit (You have 10 seconds to complete the task)



Adjust awning to desired position then :
Press the UP and DOWN buttons simultaneously, then release. Then press STOP twice

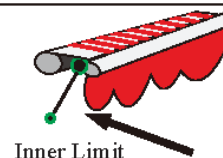
Press the DOWN button once, the motor will vibrate.

Outer Limit

During use, the motor will rebound slightly at the outer limit to flatten the fabric.

05. Setting the inner limit (for folding arm awnings and cassettes only, otherwise see page 4 for manual instructions)

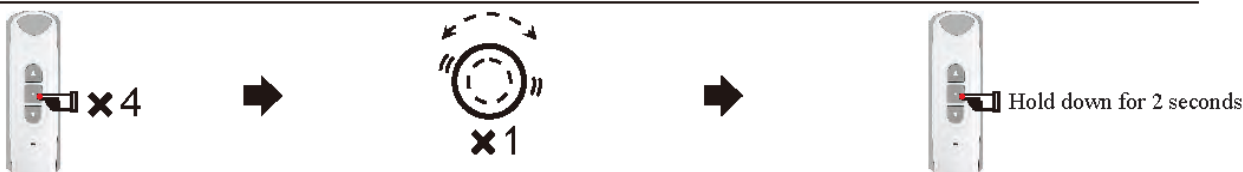
After the outer limit is set, when closing the awning for the first time allow it to stop on it's own based on tension. The motor will then apply only 25% of the force when it closes in the future, although this is adjustable in step 10



Inner Limit

To manually set the inner limit, see page 4.

⑦ Setting the third limit (Mid way position, between inner and outer limits)



Stop the awning in the desired position then Press the STOP button 4 times

The motor will vibrate and the third limit is set

Holding down the stop button for 2 seconds will send the motor to the third limit position.

8 Changing the third limit



Hold down for 2 seconds

Stop the awning in the new desired position then Press the STOP button 4 times

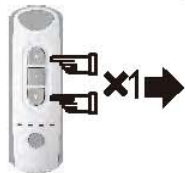
The motor will vibrate and the new third limit is set

Holding down the stop button for 2 seconds will send the motor to the new third limit position.

NOTE: The third limit will be deleted automatically if either the inner or outer limits are deleted.

9 Wind and Light sensor control

01. Activate wind and light sensor control



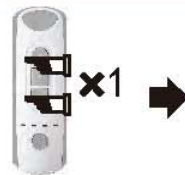
Press the UP and DOWN buttons simultaneously, then release.

Press the STOP button once

Press the UP button once, the motor will vibrate

The wind and light sensor is now operational.

02. Deactivate wind and light sensor



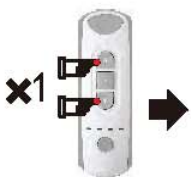
Press the UP and DOWN buttons simultaneously, then release.

Press the STOP button once

Press the Down button once, the motor will vibrate

The wind and light sensor is now inactive.

10 Adjusting Torque level used to stop at the inner limit



Press the UP and DOWN buttons simultaneously, then

Press the STOP button 4 times

Press the Up button 1, 2, 3, or 4 times as required, see below.

Press the Stop button once to finish the sequence.

The number of times the UP button (N) is pressed will determine the level of torque applied before the motor will stop at the inner limit. Press once for 25%, twice for 50%, three times for 75% or four times for 100% torque required to stop. (Default is 25%)

11 If hand crank is used to operate the motor

01.If there is power failure, whether you operate the motor by hand cranks or not, once the motor is powered on again, the motor will only respond to remote's STOP and UP command. In this case, press remote's UP button to close the awning till it stops automatically, then the motor can respond to remote's command normally.



Power off



Power on



Inner Limit



OK

02. During power on, if the motor is operated by hand crank whether open or close the awning, the motor can't recognize its current position. In this case, always press remote's UP button firstly to close the awning till it stops automatically, then the motor will respond remote's command normally.



Handy Tips

1. Always roll the Awning out and in first if setting the inner limit manually. Failure to do so may result in a change of limit position due to a change in fabric tension.
2. When pressing up and down simultaneously during setup, be as precise as possible. Ideally it should sound like one button click when both are pressed.
3. If you catch yourself making an error during a setup process, stop and allow 10 seconds for the motor to time out, then try again.
4. Do not hold any buttons down during setup process unless specifically told to do so. A half second press should be plenty and allow 1 second between presses.
5. If you are using a multi-channel remote, make certain that it is on the correct channel before you assign it to a motor. This is a common mistake.

Turning the outer limit rebound On / Off

The outer limit rebound is a function that tightens the fabric once the awning has reached it's outer limit and it turned OFF as the default setting. It does this by doing a small reverse rotation after the outer limit is reached. In some situations this may not be desirable.

To turn the rebound function ON:

(Press Up and Down simultaneously) + (press STOP 3 times) + (press UP once)

To turn the rebound function OFF:

(Press Up and Down simultaneously) + (press STOP 3 times) + (press DOWN once)

Note: If the inner limit is set manually, the rebound function will not work.