

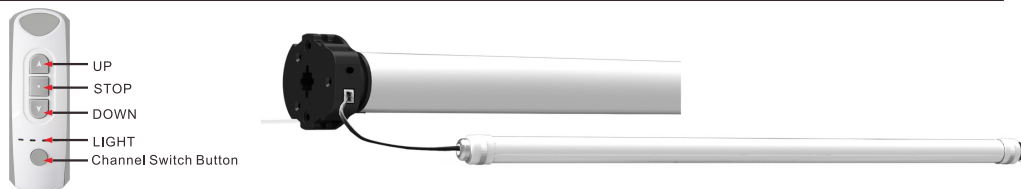
25mm DC motor instructions

Note: all programming sequences shown must be completed within 10 seconds of the first step.

1 Specifications

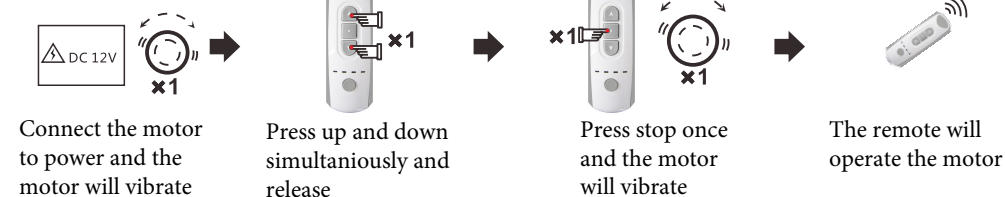
DC Motor :
 > Power: DC 12V > Rated Load: not exceed 9W

2 Wire connection - Connect battery to motor as shown below

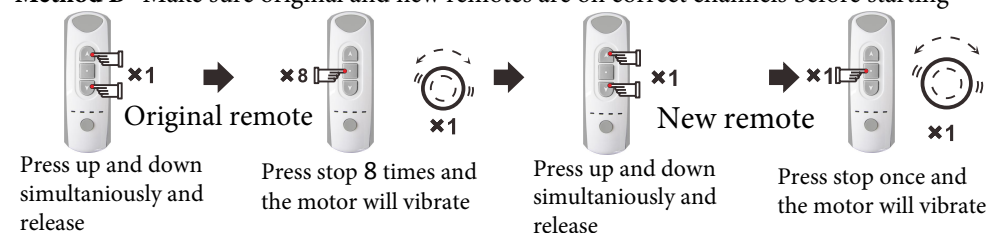


3 Assigning a remote control to a motor

Method A



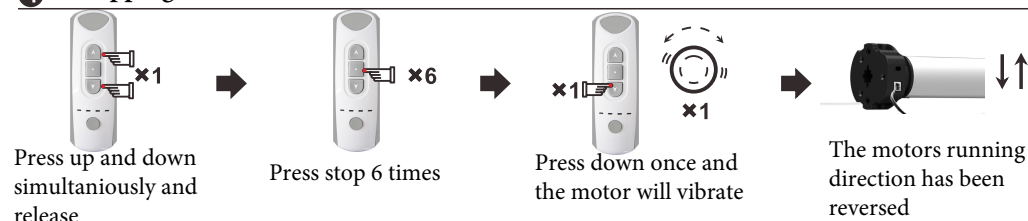
Method B Make sure original and new remotes are on correct channels before starting



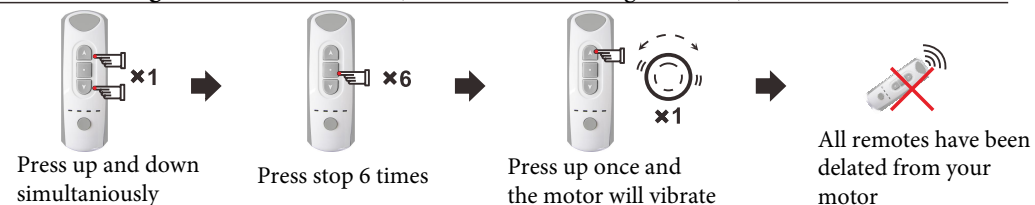
Method C



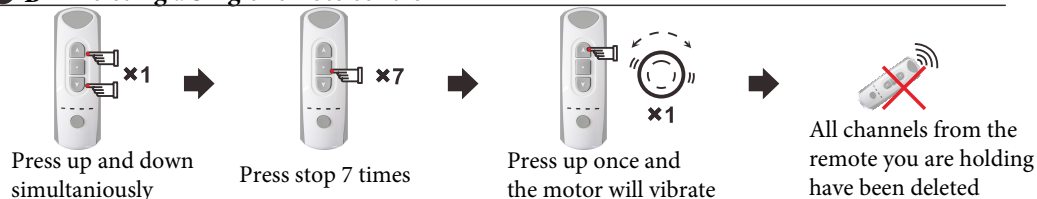
4 Swapping the motors direction



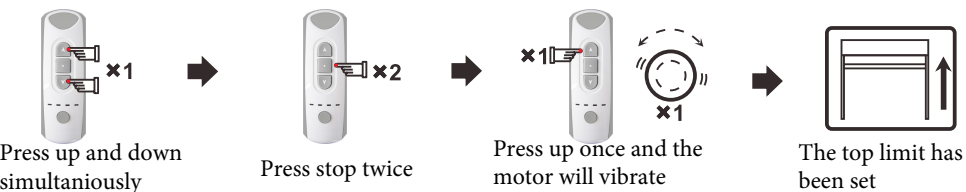
5 A Deleting all remote controls (see 5B to delete a single remote)



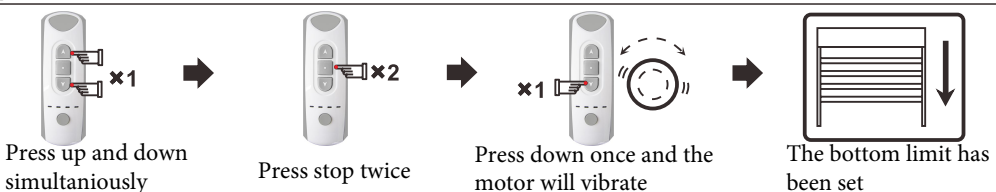
5 B Deleting a Single remote control



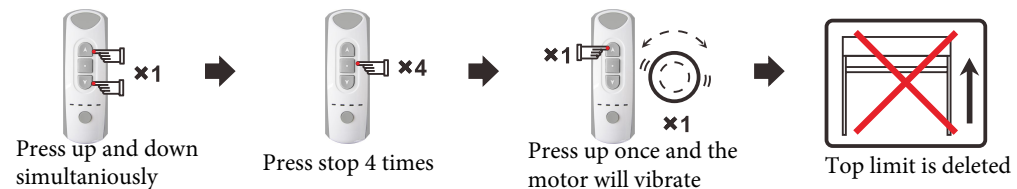
6 Setting the TOP limit



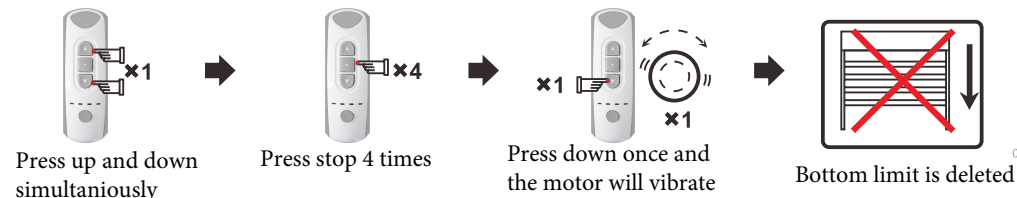
7 Setting the BOTTOM limit



8 Deleting the TOP limit

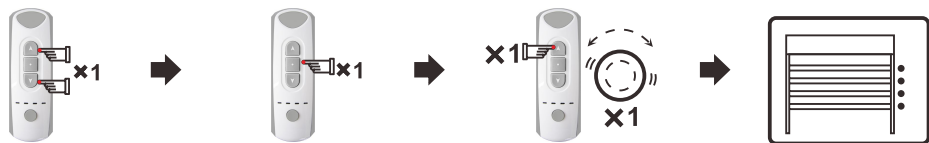


9 Deleting the BOTTOM limit



DC Motor Instruction

10 Turn on step by step mode (motor moves in small increments at a time)



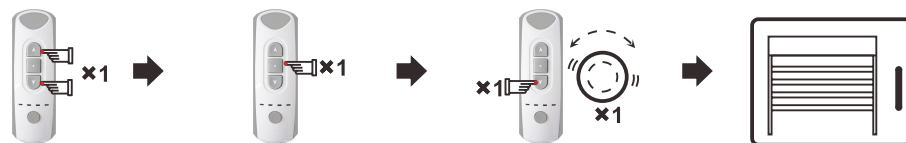
Press up and down simultaneously

Press stop once

Press up once and the motor will vibrate

The motor will work in small steps

11 Turn off step by step mode (motor runs normally with a single button press)



Press up and down simultaneously

Press stop once

Press down once and the motor will vibrate

The motor will run normally

12 Setting a 3rd limit (An intermediate limit between the normal limits)



Stop blind at desired position and press the stop button 4 times in succession

The motor will vibrate and the third limit is set

Hold the stop button for 2 seconds and the motor will travel to the third limit

Changing or deleting an upper or lower limit will automatically delete the third limit.

Resetting the 3rd limit



Stop blind at desired position and press the stop button 4 times in succession

The motor will vibrate and the new third limit is set

Hold the stop button for 2 seconds and the motor will travel to the third limit

Please note the following information:

- Settings may fail due to external signal interference, if this happens please simply repeat the setup command.
- Operation temperature is -10c to +55c
- This item is not a toy, please do not allow children to play with it.
- Please use Lithium Ion batteries for best results, or if using rechargeable batteries, then LSD (Low Self Discharge) NiMh batteries. These will last longer in devices that spend a lot of their time stationary.