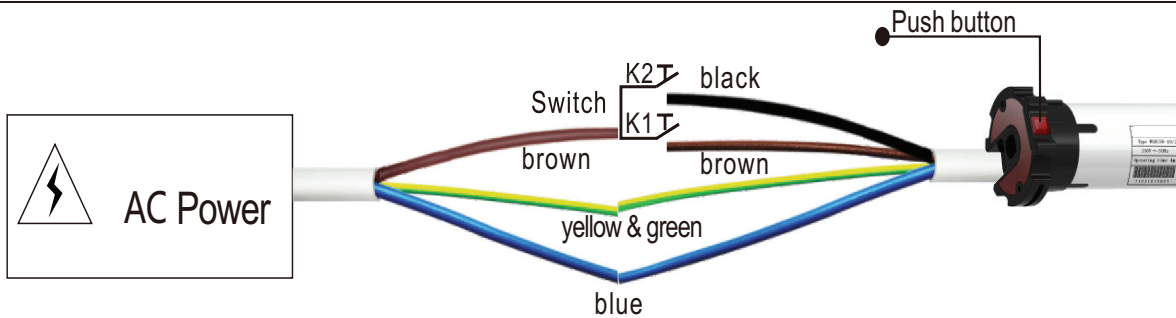


WSEC Cassette Awning motors

① Technique Specifications

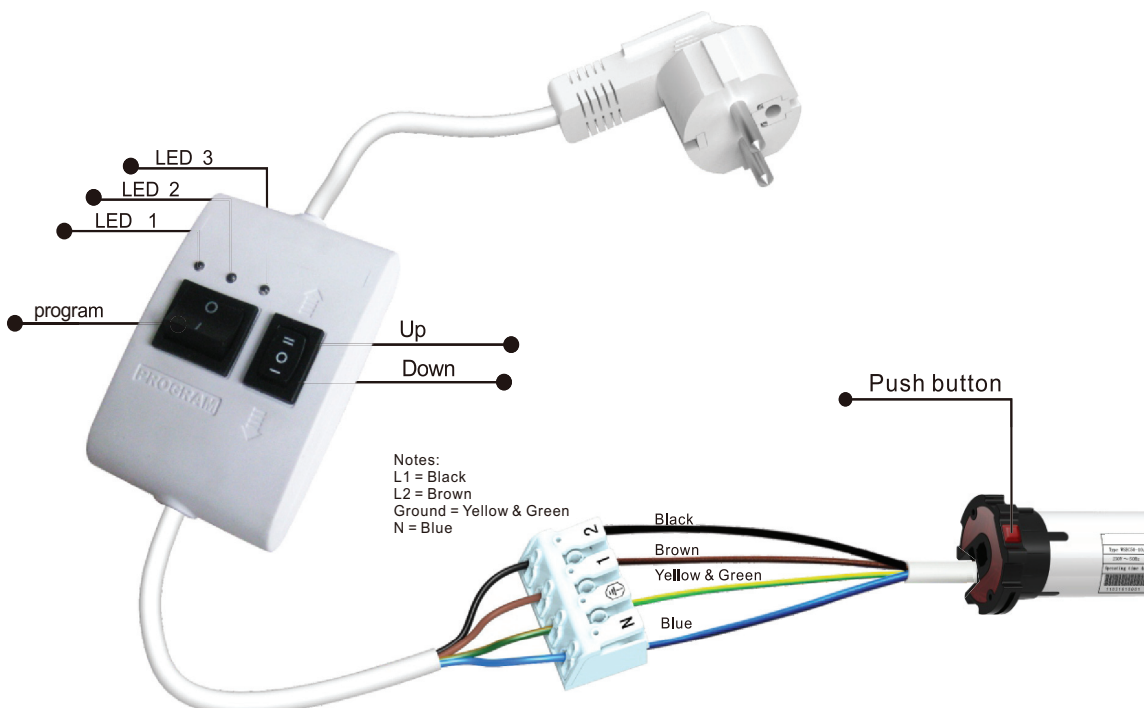
- Power: AC230V/50Hz(AC110V/60Hz)
- Rated Load: ≤400W
- The up/down limit can easily be set through the external limit setting device WSB11 or push button on motor's head.
- This motor can be connected with the external manual switch. It can also work with remote control system, which is equivalent to the use of standard type motor. When the motor works with remote control system, the wire connection is shown in the specification of adaptive remote control system.
- Description and specifications given in this introduction are subject to modification without notice. If there is any change on the appearance and color , please refer to real objects finally.

② Wire Connection



Note: The brown wire and black wire of the motor should be connected to the brown wire from power supply through the switch K1 and K2. The blue wire should be connected to the blue wire from power supply. The ground wire should be connected to the ground wire from power supply. When the switch K1 is closed, motor goes up. When the switch K1 is cut, motor stops. When the switch K2 is closed, motor goes down. When the switch K2 is cut, motor stops. The limits can be set easily through the external limit setting device WSB11 or push button.

③ WSB11 Wire Connection



Notes:
L1 = Black
L2 = Brown
Ground = Yellow & Green
N = Blue

Notes: When UP/Down/Program button is pressed, light LED1 is on. When Program button is pressed for 2s, light LED2 is on. When Program button is pressed for 10s, light LED2 is off and LED3 is on.

WSEC Cassette Awning Motors

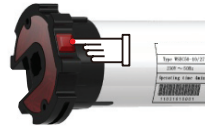
4 Instruction The Limits set-up could be done in 2 ways: push button on the motor head, limits set device WSB01.

1. Push Button Limits Set-up

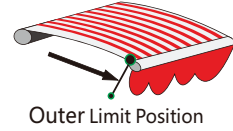
a. Outer Limit Set-up



1) Use the switch K1 or K2 and move the awning to open direction.



2) Then press the Push button on the motor head



3) Till the motor arrives at the position you want, then release the push button. This stop position is just the Outer limit

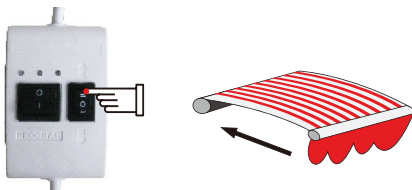
b. Inner Limit Set-up

After the awning's outer limit is set up and the awning is fully closed for the 1st time, the inner limit position is set up automatically by the awning tubular motor and do not need to be set manually.

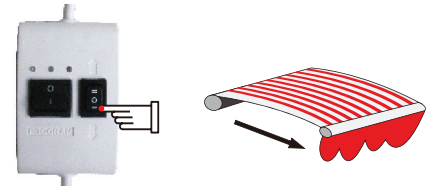
Notes: After the 1st set of outer and inner limit positions, the awning motor resistance-stop function will become very sensitive when it runs over the inner limit position during closure. Then the awning motor will fully and gently close after it meets the cassette. In this way, the awning will be protected from very strong strength to prolong the lifetime of the awning.

2. Device WSB11 Limits Set-up

a. Confirm Direction



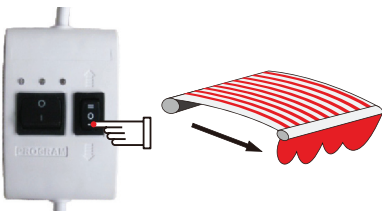
Press WSB01B UP button and move the awning close. After release UP button, the awning stop.



Press WSB01 Down button and move the awning open. After release the Down button, the awning stop.

Notes: If the awning running direction are not as the above, please change the brown and black wires of the tubular motor with 'WSB01's connections.

b. Outer Limit Set-up



1) Press the Down Button and moves the awning to open. Release the Down button when it reaches the ideal position.



2) Press the Program button for 2s till Light 2 is on and release.



3) Then press Down button for 2s till Light 2 is on and release. The outer limit position is set.

c. Inner Limit Set-up

After the awning's outer limit is set up and the awning is fully closed for the 1st time, the inner limit position is set up automatically by the awning tubular motor and do not need to be set manually.

5 Limits Cleaning



Limit cleaning through WSB01B. Long press the Program button 10s till LED3 is on and release. Then the limits are deleted.

Notes : If the awning already has limits, please do the limits cleaning firstly and go on with limits set-up.