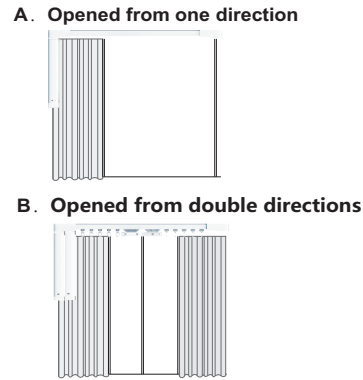
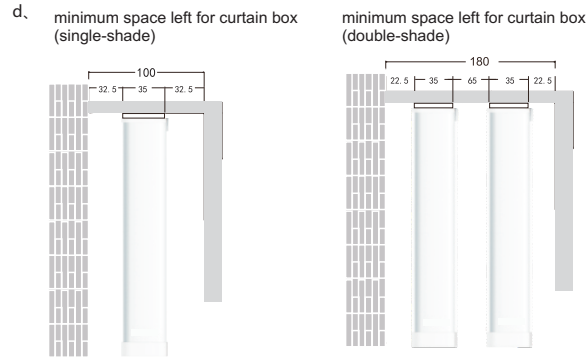
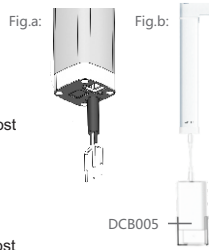


# Curtain Motor Instruction

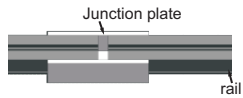
## 1. Technical dates

- a. WSCMJ AC curtain motor (Fig.a)  
 AC input: AC220V/50Hz or AC110V/60Hz  
 Insulation class: F  
 Protection index: IP20  
 Radio frequency:433.92MHz  
 The motor can work with 15 emitters at most
- b. WSCMI DC curtain motor (Fig.b)  
 DC input: DC9V-12.6V  
 Protection index: IP20  
 Radio frequency:433.92MHz  
 The motor can work with 15 emitters at most
- c. DCB005—Portable power source for WSCMI(Fig.b )  
 Charge voltage: DC16.8V (14V-18V)  
 Charge current: 1A (Max)  
 Output voltage: DC9V-12.8V/200mAH  
 Output current: 3.5A(MAX5A )  
 Capacity: 25WH  
 Protection index: IP50  
 Operating temperature range: -10℃~60℃



## 2. Belt & rail installation

### A. Rail junction



1) Insert junction plate along with rails to the joint of two rails.

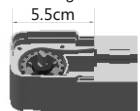
Note: ■ Rail junction is needed when rails are shorter than the requirement.  
 ■ It's inconvenient to deliver long rail, so most people chose cut them short, and then using rail junction to recover the length.



2) For the follow installation steps, please refer to "B. Belt & rail installation".

### B. Belt & rail installation

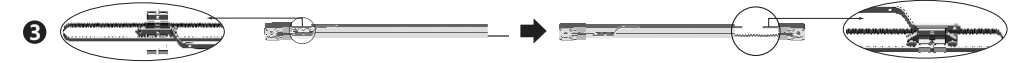
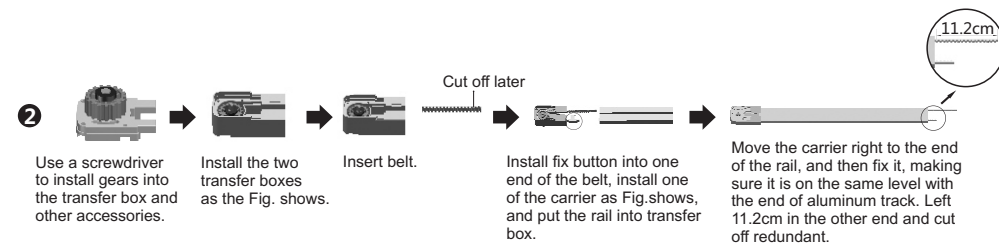
1 Aluminum track size determining.



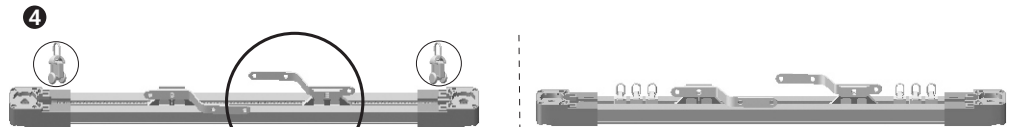
The length of aluminum track = the length of entire rail - the length of transfer box\*2

For example, the length of entire rail is 200cm

The length of aluminum track = 200-5.5\*2=189cm



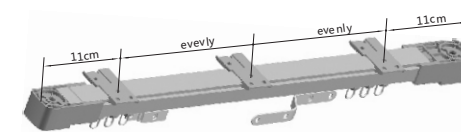
Separate the transfer box and the aluminum track, knot the fix button and install carrier into the button. Insert the left 11.2cm belt into another transfer box and knot fix button.



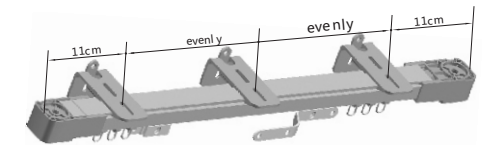
After installation of the two carriers, insert runners (8 pcs runner per meter).

The installation of runners is finished.

## 3.Track and motor installation

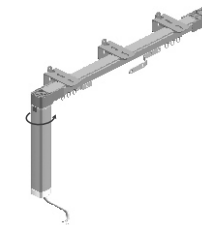


1) Ceiling installation.



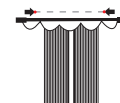
2) Side installation.

3) Install curtain motor and check whether it works.



## 4.Touch control function

Gently pull the curtain fabric, it easily opens and closes.



# Curtain Motor Instruction

## 5.Code learning

### Way 1: Power on learning

#### a.Single channel emitter (WSRE204)

1)After installation , power on, curtain motor vibrates and power light is normally on.

2)When the power light off, press learning button of emitter once, the curtain motor will vibrate, you can control the motor by the emitter.

#### b.Double channel emitter (WSRE206)

This emitter has A and B channels, can control two receivers without interference.

1)After installation , power on, curtain motor vibrates and power light is normally on.

2)When the power light off, short press the stop button of A channel, and then short press learning button of emitter once in 10s, you can control the motor by the A channel. So does B channel.

### Way 2: Button learning

#### a.Single channel emitter (WSRE204)

1)Press button on curtain motor once, power light off.

2)Press learning button of emitter once, the curtain motor will vibrate, you can control the motor by the emitter.

#### b.Double channel emitter (WSRE206)

1)Press button on curtain motor once, power light off.

2)Short press the stop button of A channel, and then short press learning button of the emitter once, you can control the motor by A channel. So does B channel.

## 6.Copy

#### a.Single channel emitter (WSRE204)

1)Short press the learning button of emitter A 8 times, the motor will vibrate and the power light off.

2)Short press the stop button of emitter B, the motor will vibrate.

3)You can control the motor by emitter B.

#### b.Double channel emitter (WSRE206)

1) Short press the stop button of A channel of emitter A once, and then the learning button 8 times, the motor will vibrate and the power light off.

2)Short press the stop button of A channel of emitter B once, and then the learning button, the motor will vibrate.

3)You can control the motor by A channel of emitter B.

## 7.Delete

#### a.Single channel emitter (WSRE204)

1)Short press learning button 6 times.

2)Short press left button once.

3)All emitters cannot control the motor anymore.

#### b.Double channel emitter (WSRE206)

1)Short press stop button of current channel once, and then learning button 6 times.

2)Short press left button once.

3)All emitters cannot control the motor anymore.

## 8.Delete current emitter

#### a.Single channel emitter (WSRE204)

1)Short press learning button 7 times.

2)Short press left button once.

3)Current emitter cannot control the motor anymore.

#### b.Double channel emitter (WSRE206)

1)Short press stop button of current channel once, and then learning button 7 times.

2)Short press left button once.

3)Current emitter cannot control the motor anymore.

# Curtain Motor Instruction

## 9. Set limit

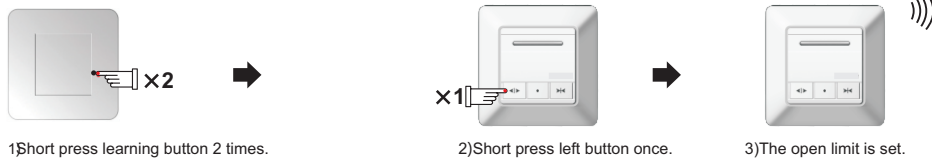
### ① Automatically set limit

Under the condition of no limit, when the motor first stops for obstacle, it will automatically set open and close limits.

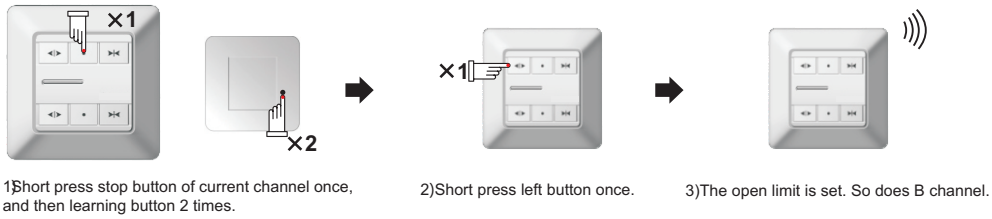
### ② Set limit by emitter

#### I. Set open limit

##### a. Single channel emitter (WSRE204)



##### b. Double channel emitter (WSRE206)

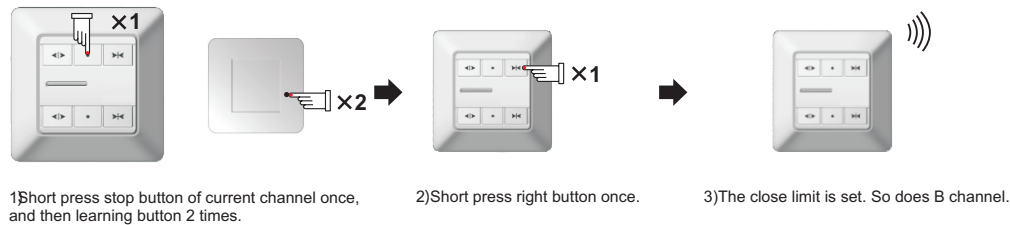


#### II. Set close limit

##### a. Single channel emitter (WSRE204)



##### b. Double channel emitter (WSRE206)

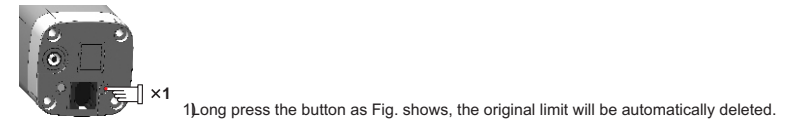


## 10. Delete limit

### ① Automatically delete limit

Under the condition of limits already, if the motor encounters obstacles during operation process, the original limit will be automatically deleted. When blocks again, it will reset the limit.

### ② Delete limit by button



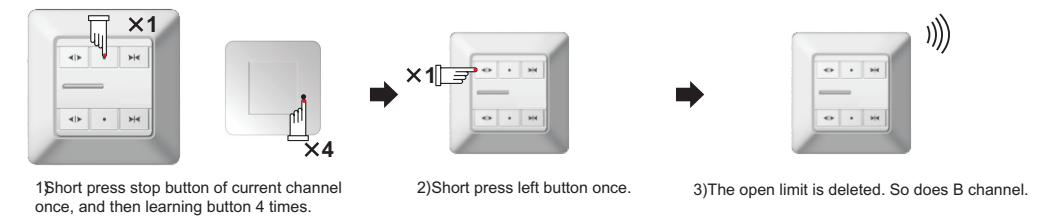
### ③ Delete limit by emitter

#### I Delete open limit

##### a. Single channel emitter (WSRE204)

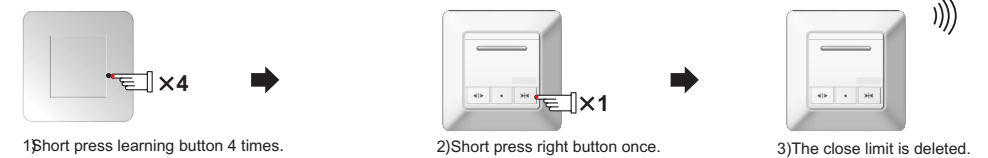


##### b. Double channel emitter (WSRE206)

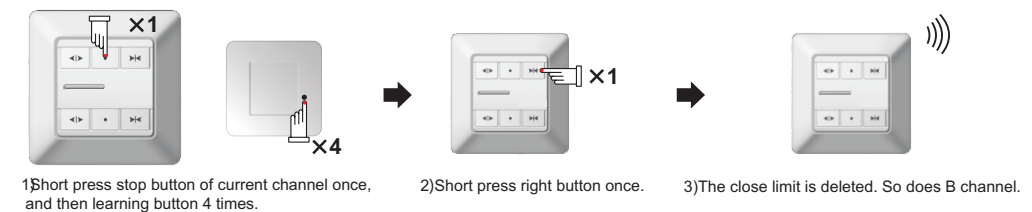


#### II Delete close limit

##### a. Single channel emitter (WSRE204)



##### b. Double channel emitter (WSRE206)

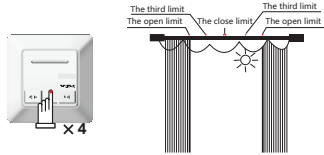


# Curtain Motor Instruction

## 11.The third limit

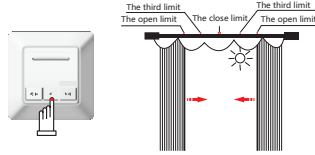
### a.Set the third limit (WSRE204)

Short press stop button of emitter 4 times, the motor will vibrate, the third limit is set.



### b.Operate the third limit (WSRE204)

Long press stop button of emitter, curtain will operate to the third limit.

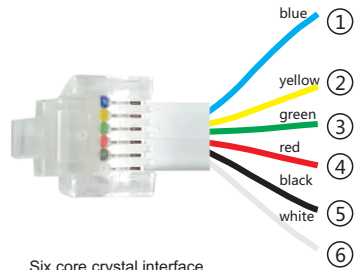


### c.Delete the third limit

When delete limit, the third limit will also be deleted.

## 12.Optional function

### Dry contact wiring diagram



Six core crystal interface

- 1.Open/Close
- 2.Common Line
- 3.Close/Open
- 4.GND
- 5.RS485B
- 6.RS485A

- 1.Connect the yellow line ② and the blue line ①, the motor run open or close. Re-connect and the motor will stop.
- 2.Connect the yellow line ② and the Green line ③, the motor run close or open. Re-connect and the motor will stop.

## 13.Common faults and ruled out

No.	Faults	Reasons	Ruled out methods
1	Power on, the motor does not work or operate unstably and slowly.	A: Overload. B: Improper installation. C: low voltage.	A: Change large torque motor. B: Check connection of all parts. C: Adjust voltage AC200~260V/50Hz (100V~260V/60Hz).
2	Motor fails to fully match up the under cover of rail.	Output end of the motor is not in vertical with transfer box.	Slight pull curtain.

**Note:** The voltage in parentheses is voltage configuration data for AC 110V.