

FT Motor

Our innovative fabric tensioning motor is designed to get the most out of external shades and blinds.



3 FABRIC TENSIONING MODES

E-type for standard use, Manual FT Mode for fabric tensioning with conventional locks and Auto FT Mode for one-action lock and tensioning, with our Ultra-Lock.



IMPACT DETECTION

The FT redirects movement to protect the motor, hardware and fabric, if the path of the shade is obstructed by an unexpected obstacle, ensuring the longevity of the system hardware.



DESIGNED FOR ZIPSCREEN

The FT motor is specifically designed to perfectly situate and function within the hardware of our flagship external shading system, Zipscreen.



OPTIMISED FOR ULTRA-LOCK

When used with the innovative Ultra-Lock, the FT motor closes, locks and tensions the shade in one, automatic action. No manual intervention necessary.



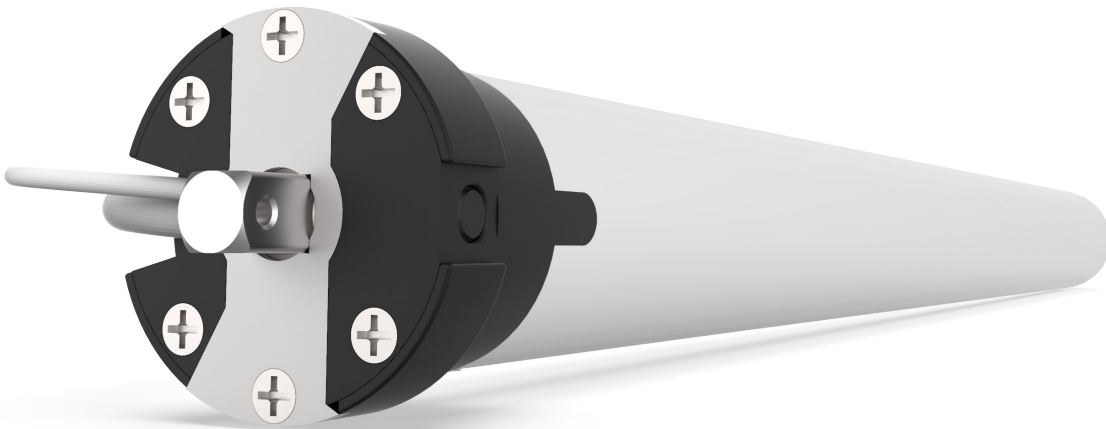
FAVOURITE POSITION

Regularly used shade positions can be set and activated at the quick touch of a button.



SENSOR COMPATIBILITY

Pair with a range of sensors to create an automatic shading system, that adjusts according to weather conditions.



7 YEAR WARRANTY



ARC™ (Automate Radio Communication) is Rollease Acmeda's proprietary technology utilising 433MHz radio communication with bi-directional feedback that brings Automate motorised shading systems together.

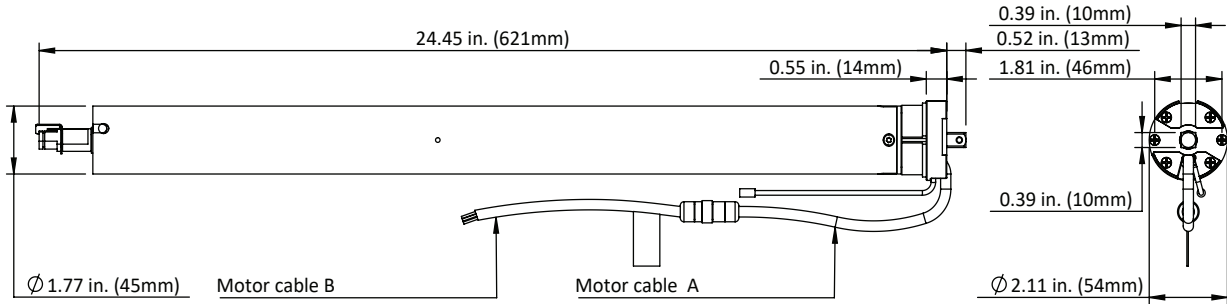
PRODUCT SPECIFICATIONS

Part #: MT01-1145-050001 AUTOMATE ARC FT Motor [Ø45/15Nm/15rpm] with Clip

Part #: MT01-1145-050012 AUTOMATE ARC FT Motor Long connector[Ø45/15Nm/15rpm] with Clip

| | | | |
|------------------------|--------------------|---------------------------|-----------------------------|
| Voltage | 220 - 240V AC 60Hz | IP Rating | IP44 |
| Torque | 15Nm | Limit Switch Type | Electronic |
| Max Run Time | 4min | Current | 1.73 A |
| Speed | 32 RPM | Temp Working Range | 32°F to 140°F (0°C to 60°C) |
| Radio Frequency | 433.92 MHz | Insulation Class | I |
| RF Modulation | FSK | Power | 208 W |

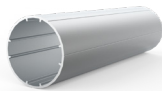
DIMENSIONS



| PART NUMBER | MOTOR CABLE A | MOTOR CABLE B |
|------------------|---------------|---------------|
| MT01-1145-050001 | 250mm | 2500mm |
| MT01-1145-050012 | 2500mm | 250mm |

COMPATIBLE PARTS

Tubes



Crowns



Drives



| | | | |
|-----------------|--------------------|---|---|
| EXTERNAL | Aluminium 63mm | RE01-0663-050518 | RE01-0666-050508 |
| | Aluminium 78mm STD | RE01-0663-050518 + RE01-0701-050078 (VEUE) OR RE20-0301-050078 (ZIPSREEN) | STANDARD: RE01-0679-050508 IMPACT DETECT: RE01-0680-050508 |
| | Aluminium 78mm HD | | |
| INTERNAL | Steel 78mm | RB56-0136-050508 | RB56-0105-050502 |
| | S60 60 STD | | |
| | S60 80 HD | RB56-0138-050508 | |

S60 APPLICATIONS REQUIRE RB56-0701-XXX508 + RB56-0711-050509 MOTOR HEAD ADAPTORS

COMPATIBLE PRODUCTS (refer to catalog for full item listings)

Controllers



Pulse HUB & App



Push 5 remotes

Sensors



Sun and Wind Sensor

APPLICATIONS

- Outdoor Shades (Zipscreen)
- Roller Shade
- Large S60