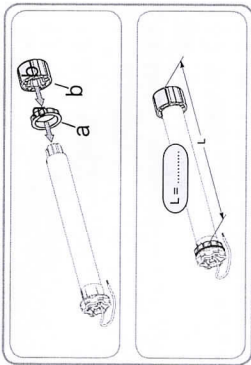


3. INSTALLATION

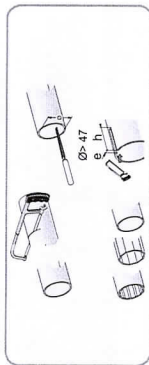
3.1. Motor preparation

- 1) Fit the crown (a) and drive wheel (b) to the motor.
- 2) Measure the length (L) between the end of the drive wheel and the head end.



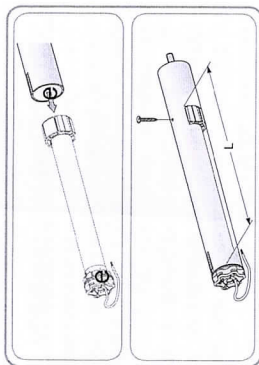
3.2. Tube preparation

- 1) Cut the tube to the required length.
- 2) Deburr the tube and remove the debris.
- 3) For smooth roller tubes, cut a notch with the following measurements:
e = 4 mm / 0.16 in h = 28 mm / 1.1 in



3.3. Motor/tube assembly

- 1) Slide the motor into the tube.
For smooth roller tubes, position the notch previously cut on the crown.
- 2) Fix the tube to the drive wheel with 4 self-tapping screws with a diameter of 5 mm or 4 steel pop rivets with a diameter of 4.8 mm located at L - 15 mm ± 3 mm.



Warning: The screws or pop rivets must only be attached to the drive wheel and not to the motor.

3.4. Mounting the motorized tube on the brackets

If necessary, screw the bracket interface on the motor head.

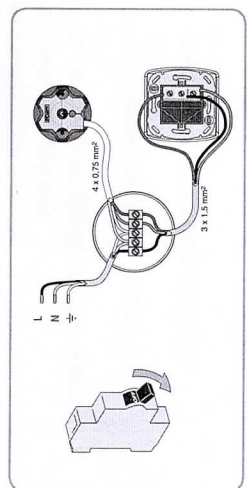
- 1) Mount the motorized tube on the end bracket (c).
- 2) Mount the motorized tube on the motor bracket (d).
Fit the stop ring (e).



4. WIRING

- 1) Cut off the mains power supply.
- 2) Connect the motor according to the information in the table below:

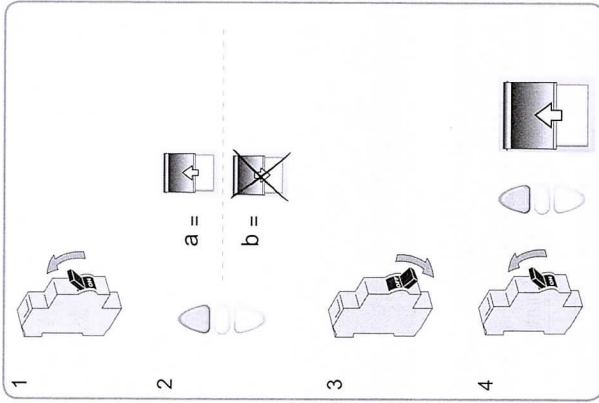
Power supply	230V/220V	120V
Neutral	Blue	White
Live	Brown	Red
Live	Black	Black
Earth	Yellow/Green	Green



5. COMMISSIONING

5.1. Checking the rotation direction

- 1) Switch on the power supply.
- 2) Press the control point UP button:
 - a) If the shade is raised (a), the rotation direction is correct: move to the section entitled «Adjusting the end limits».
 - b) If the shade is lowered (b), the rotation direction is incorrect: move to the next step.
- 3) Switch off the power supply.
Reverse the two live wires on the control point.
- 4) Switch on the power supply.
Press the control point UP button to check the rotation direction.



5.2. Adjusting the end limits

The limits can be set in any sequence.

5.2.1. up limit

Press the control point UP button to raise the shade to the Up limit and turn the corresponding adjustment screw to set this limit.

