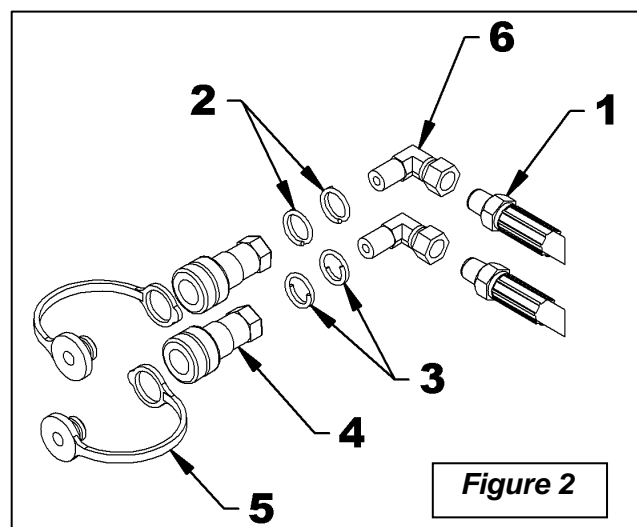
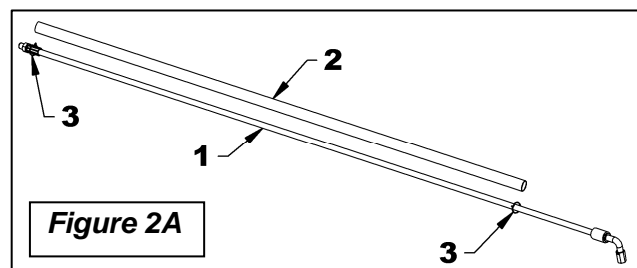
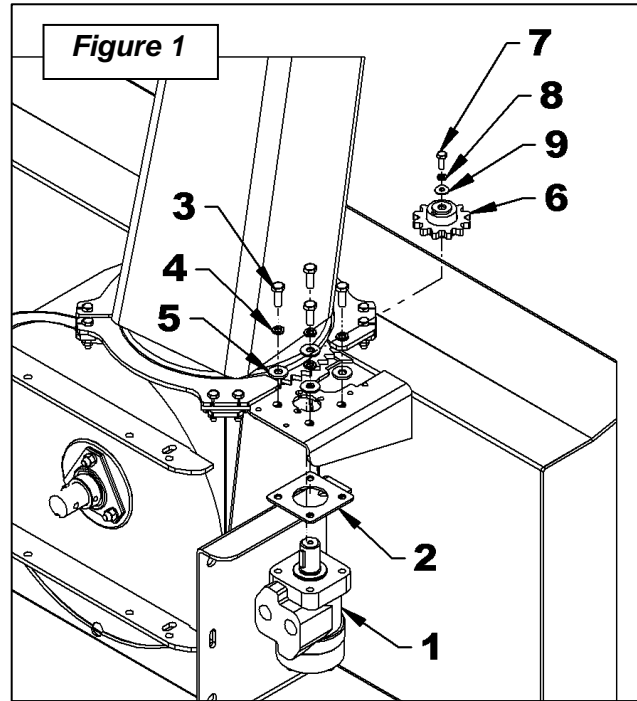


APPLICATION: B2781B and B2782B.

INSTALLATION

1. Install the chute according to the instructions contained in the snowblower Operator's Manual.
2. **Figure 1:** Place the motor spacer (item 2) on the motor top (item 1) by aligning the holes. Install the motor (item 1) under the frame base of the snowblower and secure with four 3/8"NC x 1" bolts (item 3), four 3/8" lockwashers (item 4) and four 3/8" (7/16" hole) flat washers (item 5). Torque slightly.
3. **Figure 1:** Make sure the Woodruff key is on the motor shaft and insert the motor gear (item 6) on the shaft. Secure with a 1/4"NC x 3/4" bolt (item 7), a 1/4" lockwasher (item 8) and a 1/4" (5/16" hole) flat washer (item 9).
4. **Figure 2A:** Slide the protective nylon sheath (item 2) over the hose (item 1). Attach the sheath near the 1/4"NPT straight end, and the other end to the hose with a 4" lg tie wrap (items 3).
5. **Figure 2:** Using thread sealant, install a 90° 1/4" NPT male x 1/4" NPT swivel female elbow (item 6) and a quick coupler with rubber dust cap (items 4-5) at the end of each hose (item 1). Make sure to place the dust cap rings on the hoses and to identify the hoses with the colored rings (item 2-3) before connecting.
6. **Figure 3:** Install a 0.052" flow restrictor (item 2) in each motor input (item 1).
7. **Figure 3:** Connect the two hoses (item 3) on the motor flow restrictors (item 2). Direct the hose elbows toward the snowblower upper arm.



INSTRUCTION SHEET

HYDRAULIC ROTATION

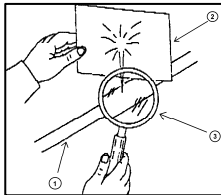
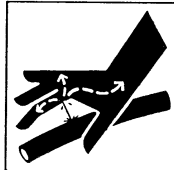
8. **Figure 3:** Run hoses on the snowblower with suitable bend, staying away from sharp edges, nor compromise the snowblower maintenance.

For 3 point hitch snowblower: Attach to the right or left snowblower three point arm with a hose clamp (item 4), a 3/8"NC x 1 1/2" bolt (item 5) and a 3/8"NC nylon insert locknut (item 6).

9. Connect hoses to tractor and make sure to raise and lower the snowblower in extreme positions, and check if hoses are long enough to not interfere with any parts. Attach hoses with nylon tie wrap to appropriate places. Rotate the chute to the right and to the left.

CAUTION To avoid serious personal injury. Escaping hydraulic/diesel fluid under pressure can penetrate the skin causing serious injury.

- Do not use your hands to check for leaks. Use a piece of cardboard or paper to search for leaks.

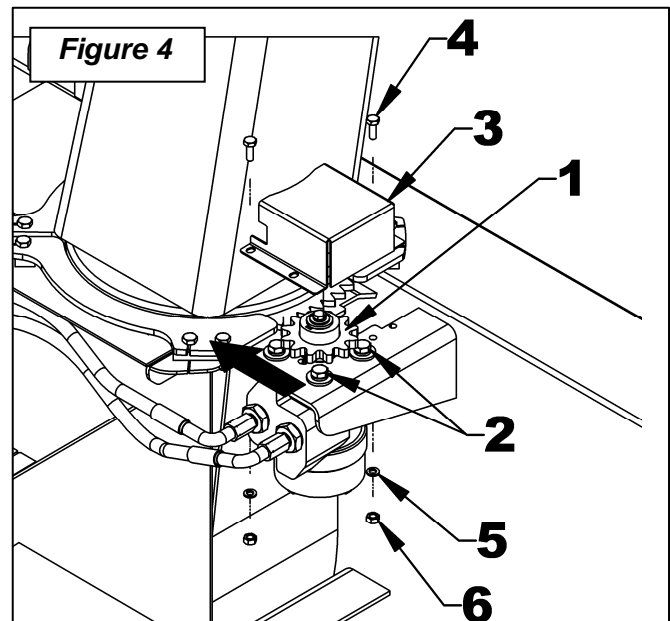
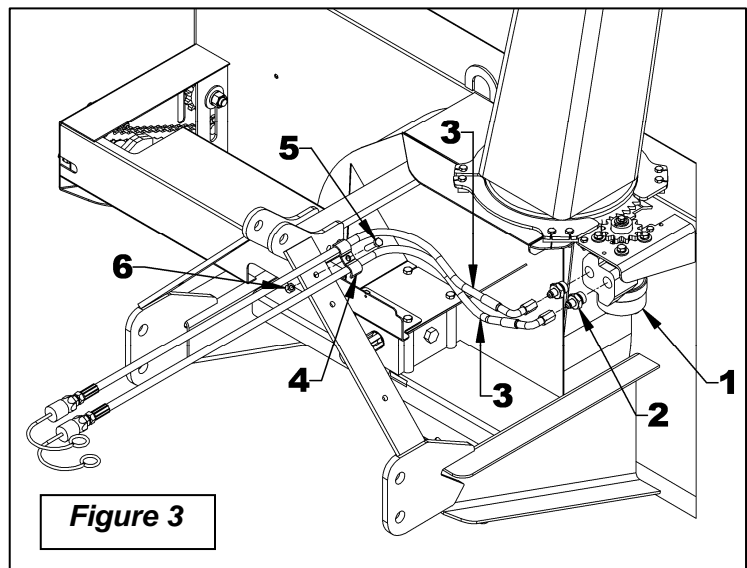


1. Hydraulic hose
2. Cardboard
3. Magnifying glass

- Stop engine and relieve pressure before connecting or disconnecting lines.
- Tighten all connections before starting engine or pressurizing lines.
- If any fluid is injected into the skin, obtain medical attention immediately or gangrene may result.

10. **Figure 4: MOTOR ADJUSTMENT:** Push the motor toward the chute as to well set the gear teeth (item 1) without letting any play between teeth. Tighten firmly the four 3/8"NC x 1" bolts (item 2). If the rotation does not operate correctly, redo the adjustment.

11. **Figure 4:** Install the gear shield (item 3) and secure with two 1/4"NC x 3/4" bolts (item 4), two 1/4" lockwashers and two 1/4"NC nuts (items 5-6), as illustrated.



PROBLEM: HYDRAULIC CHUTE ROTATION IS SLOW OR DOESN'T TURN

When activating the chute rotation, it turns very slowly or not at all.



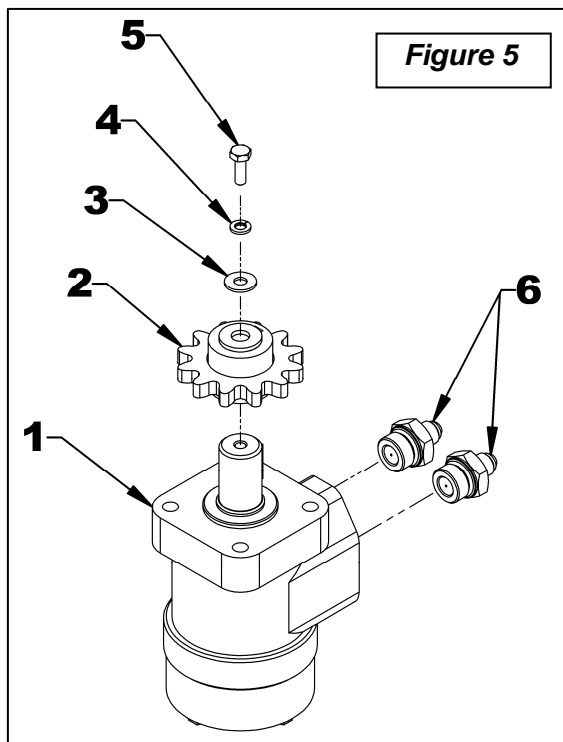
WARNING

To avoid serious personal injury, always wear safety glasses while doing the instructions below.

SOLUTION:

1. Check if the tractor valve works well. Test it by plugging another piece of equipment to the valve. If it does not work well, refer to the appropriate operator's manual.
2. **Figure 5:** Check if the chute itself rotates well. To do so, remove the 1/4"NC x 3/4" bolt (item 5), 1/4" lockwasher (item 4), 1/4" flat washer (item 3) and the motor gear (item 2) attached to the motor shaft (item 1) and check if the chute rotates well in both directions by turning it by hand. If it does not rotate well, correct the problem by checking if there is some excess wear or debris locked between components.

3. **Figure 5:** Check if there is residue in the hydraulic circuit. To do so, first verify if the chute rotates well in one direction. If so, remove the 1/4"NC x 3/4" bolt (item 5), 1/4" lockwasher (item 4), 1/4" flat washer (item 3) and the motor gear (item 2) attached to the motor shaft (item 1) and activate the rotation in the direction the motor turns well for approximately 1 minute to evacuate the residues. Then rotate the chute in the direction it did not turn well and check if the problem is resolved. - If not or if the chute does not rotate well in either direction, disconnect the motor hoses, remove the two flow restrictors (item 6) attached to the motor inputs (item 1) and inspect the holes of the two flow restrictors carefully. Remove the residues if needed. If no residue is present, disconnect hoses and clean them with compressed air. - If the problem persists, check if there is residue inside the motor (item 1). Clean with compressed air the inside of the two motor inputs. You can also manually turn the motor shaft in both directions while shooting compressed air.



IMPORTANT: When removing connectors, always make sure to install the plugs and caps on the hoses and tractor valve connectors. This will prevent contamination of the hydraulic circuit and obstruction of the flow restrictor hole.

PARTS

REF.	DESCRIPTION	QTY	PART #	CODE
	Hardware bag (not shown)	1	77700-04264	670342
1	Hydraulic motor 50cc	1	77700-02698	3910092
	- Seal Kit	1	77700-03046	3910093
2	Key 1/4" x 1" woodruff (incl. in 3910092)	1	77700-03040	659191
3	Motor gear	1	77700-02692	669705
4	Flow restrictor 0.052"	2	70060-04309	664362
5	Rubber hose 1/4" x 75"lg.	2	70001-00608	664920
6	Elbow 90° 1/4"NPT male x 1/4"NPT sw.female	2	70001-00599	655211
7	Male quick coupler	2	70060-04310	664668
8	Dust cap	2	70060-00336	2600061
9	Flat washer 1/4" (5/16" hole) PTD	1	75599-32011	1400002
10	Lockwasher 1/4" PTD	3	75599-33011	1200002
11	Gear shield	1	77700-02693	669715
12	Bolt hex. 1/4"NC x 3/4" PTD	3	75599-01115	0100003
13	Bolt hex. 3/8"NC x 1" PTD	4	75599-01320	0100038
14	Lockwasher 3/8" PTD	4	75599-33013	1200004
15	Flat washer 3/8" (7/16" hole) PTD	4	75599-32014	1400004
16	Motor spacer	1	77700-02695	669718
17	Nut hex. 1/4"NC PTD	2	75599-31011	0900001
18	Hose clamp	1	70060-02294	666583
19	Nylon insert locknut 3/8"NC PTD	1	75599-31913	1000006
20	Bolt hex. 3/8"NC x 1 1/2" PTD	1	75599-01330	0100040
21	Tie wrap 1/4" x 15" lg.	2	70060-02719	2100009
22	Green identification ring	2	70060-01570	658209
23	Yellow identification ring	2	70060-01569	658206
24	Protective nylon sheath 61"lg	2	77700-00979	668822
25	Tie wrap 2.5mm x 4" lg	4	77700-00985	2100001

