



Sky

by Lisa Richardson



SIZE

To fit bust

71-76	81-86	91-97	102-107	112-117	122-127	132-137	142-147	152-157	cm
28-30	32-34	36-38	40-42	44-46	48-50	52-54	56-58	60-62	in

Actual bust measurement of garment

82.5	92.5	102.5	112.5	122.5	132.5	142.5	152.5	165	cm
32½	36½	40¼	44¼	48¼	52¼	56	60	65	in

YARN

Tweed Haze

A Sunset 557

5	5	5	6	6	7	7	8	8	x 50gm
---	---	---	---	---	---	---	---	---	--------

B Winter 550

3	3	3	3	4	4	4	5	5	x 50gm
---	---	---	---	---	---	---	---	---	--------

NEEDLES

1 pair 5½mm (no 5) (US 9) needles

1 pair 6mm (no 4) (US 10) needles

5½mm (no 5) (US 9) circular needle at least 120 cm long

BUTTONS – 3 x faux leather 2.5 cm shank buttons.

TENSION

16 sts and 18 rows to 10 cm measured over fairisle patt using 6mm (US 10) needles.



Draft Cowl

by Lisa Richardson



YARN

Tweed Haze

A Winter	550	1 x 50gm
B Sunset	557	1 x 50gm
C Storm	556	2 x 50gm
D Setting Sun	555	1 x 50gm
E Clear Blue	551	1 x 50gm

NEEDLES

6mm (no 4) (US 10) circular needle no more than 140 cm long

TENSION

17 sts and 34 rows to 10 cm measured over mosaic g st using 6mm (US 10) needles.

FINISHED SIZE

Completed cowl is approx. 148 cm (58¼ in) in circumference and 22 cm (8¾ in) deep.



Air Sweater and Wraps

by Lisa Richardson



SWEATER

SIZE

To fit bust

71-76	81-86	91-97	102-107	112-117	122-127	132-137	142-147	152-157	cm
28-30	32-34	36-38	40-42	44-46	48-50	52-54	56-58	60-62	in

Actual bust measurement of garment

104	118	126	140	148	154	162	178	186	cm
41	46½	49½	55	58¼	60½	63¼	70	73¼	in

YARN

Tweed Haze

A Winter 550

3	3	4	4	4	4	4	5	5	x 50gm
---	---	---	---	---	---	---	---	---	--------

B Clear Blue 551

2	2	2	3	3	3	3	3	3	x 50gm
---	---	---	---	---	---	---	---	---	--------

C Setting Sun 555

2	2	2	2	2	2	2	2	3	x 50gm
---	---	---	---	---	---	---	---	---	--------

D Rainy 552

2	2	2	2	2	2	2	3	3	x 50gm
---	---	---	---	---	---	---	---	---	--------

E Sunset 557

2	2	2	2	2	3	3	3	3	x 50gm
---	---	---	---	---	---	---	---	---	--------

WRAP FINISHED SIZE

Completed wrap is 48 cm (19 in) wide and 200 cm (78¾ in) long.

Colourway 1

A Storm	556	5 x 50gm
B Midnight	553	2 x 50gm
C Setting Sun	555	1 x 50gm
D Tornado	554	1 x 50gm
E Sunset	557	1 x 50gm

Colourway 2

A Midnight	553	5 x 50gm
B Storm	556	2 x 50gm
C Setting Sun	555	1 x 50gm
D Tornado	554	1 x 50gm
E Sunset	557	1 x 50gm

NEEDLES

1 pair 8mm (no 0) (US 11) needles (for sweater only)

1 pair 9mm (no 00) (US 13) needles

TENSION

10 sts and 15 rows to 10 cm measured over st st using 9mm (US 13) needles and yarn

Gust

by Lisa Richardson



SIZE

To fit bust

71-97	102-127	132-157	cm
28-38	40-50	52-62	in

Actual circumference at lower edge

106	135	174	cm
41¾	53¾	68½	in

YARN

Tweed Haze

2 3 3 x 50gm

(photographed in Rainy 552)

NEEDLES

Set of 4 double-pointed 6mm (no 4) (US 10) needles

6mm (no 4) (US 10) circular needle no more than 80 cm long

TENSION

14.5 sts and 20 rows to 10 cm measured over bobble patt using 6mm (US 10) needles.



Zephyr

by Lisa Richardson



YARN

2-colour version

Tweed Haze

A Storm 556 1 x 50gm
B Setting Sun 555 1 x 50gm

Plain version

Tweed Haze

1 x 50gm
(photographed in Rainy 552)

NEEDLES

Set of 4 double-pointed 6mm (no 4) (US 10) needles

EXTRAS

Plain version only - 1 Rowan Faux Fur pom pom

TENSION

14.5 sts and 20 rows to 10 cm measured over st st using 6mm (US 10) needles.

FINISHED SIZE

Completed hat is 49.5 cm (19 ½ in) in circumference.



Squall

by Lisa Richardson



YARN

Tweed Haze

4 x 50gm

(photographed in Sunset 557)

NEEDLES

1 pair 6mm (no 4) (US 10) needles

TENSION

15 sts and 26 rows to 10 cm measured over g st using 6mm (US 10) needles.

FINISHED SIZE

Completed scarf is 26 cm (10¼ in) wide and 210 cm (82¾ in) long



Blast

by Lisa Richardson



36-38" garment shown here on a 32" chest model

SIZE

To fit bust

71-76	81-86	91-97	102-107	112-117	122-127	132-137	142-147	152-157	cm
28-30	32-34	36-38	40-42	44-46	48-50	52-54	56-58	60-62	in

Actual bust measurement of garment

105	116	127	135	146	157	165.5	176.5	187.5	cm
41¼	45¾	50	53¾	57½	61¾	65¼	69½	73¾	in

YARN

Tweed Haze

6	6	7	7	8	9	9	10	10	x 50gm
---	---	---	---	---	---	---	----	----	--------

(photographed in Winter 550)

NEEDLES

1 pair 5½mm (no 5) (US 9) needles

1 pair 6mm (no 4) (US 10) needles

5½mm (no 5) (US 9) circular needle at least 120 cm long

BUTTONS – 3 x Shell effect 2.2 cm buttons (used showing reverse of button).

TENSION

14.5 sts and 20 rows to 10 cm measured over st st using 6mm (US 10) needles.

Whirlwind

by Lisa Richardson



36-38" garment shown here on a 32" chest model

SIZE

To fit bust

71-76	81-86	91-97	102-107	112-117	122-127	132-137	142-147	152-157	cm
28-30	32-34	36-38	40-42	44-46	48-50	52-54	56-58	60-62	in

Actual bust measurement of garment

83	91	102	113	121.5	132.5	140.5	151.5	163	cm
32 $\frac{3}{4}$	35 $\frac{3}{4}$	40 $\frac{1}{4}$	44 $\frac{1}{2}$	47 $\frac{3}{4}$	52 $\frac{1}{4}$	55 $\frac{1}{4}$	59 $\frac{3}{4}$	64 $\frac{3}{4}$	in

YARN

Tweed Haze

5	5	6	6	7	7	8	9	9	x 50gm
---	---	---	---	---	---	---	---	---	--------

(photographed in Tornado 554)

NEEDLES

1 pair 6mm (no 4) (US 10) needles

BUTTONS – (optional) 4 x leather 2.5 cm buttons.

TENSION

14.5 sts and 20 rows to 10 cm measured over st st using 6mm (US 10) needles.

Whisk

by Lisa Richardson



36-38" garment shown here on a 32" chest model

SIZE

To fit bust

71-76	81-86	91-97	102-107	112-117	122-127	132-137	142-147	152-157	cm
28-30	32-34	36-38	40-42	44-46	48-50	52-54	56-58	60-62	in

Actual bust measurement of garment

84	94	103.5	114.5	124	134	143.5	154.5	165.5	cm
33	37	40¾	45	48¾	52¾	56½	60¾	65¾	in

YARN

Tweed Haze

A Midnight 553

4	5	5	6	6	7	8	8	9	x 50gm
---	---	---	---	---	---	---	---	---	--------

B Sunset 557

1	1	1	1	1	1	1	2	2	x 50gm
---	---	---	---	---	---	---	---	---	--------

C Winter 550

1	1	1	1	1	1	1	1	1	x 50gm
---	---	---	---	---	---	---	---	---	--------

D Setting Sun 555

1	1	1	1	1	1	1	1	1	x 50gm
---	---	---	---	---	---	---	---	---	--------

NEEDLES

5½mm (no 5) (US 9) circular needle no more than 80 [80: 100: 100: 120: 120: 150: 150: 150] cm long

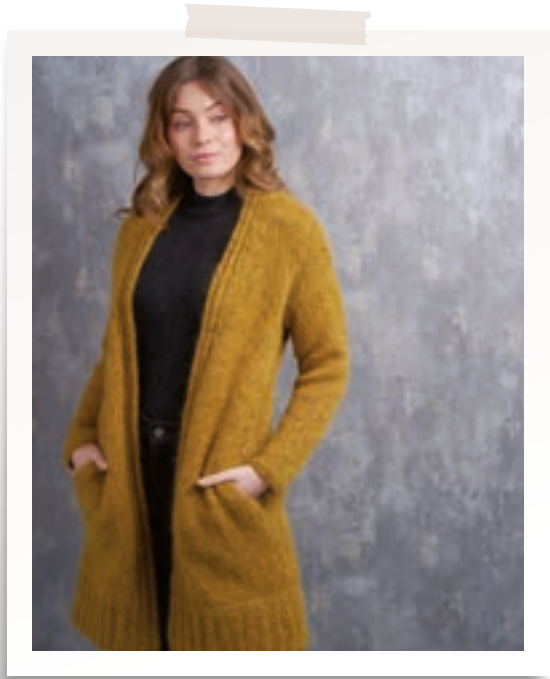
6mm (no 4) (US 10) circular needle no more than 80 [80: 100: 100: 120: 120: 150: 150] cm long

Set of 4 double-pointed 5½mm (no 5) (US 9) needles

Set of 4 double-pointed 6mm (no 4) (US 10) needles

TENSION

14.5 sts and 20 rounds to 10 cm measured over plain st st, 15.5 sts and 18.5 rounds to 10 cm measured over patterned st st, both using 6mm (US 10) needles.



Horizon

by Lisa Richardson



36-38" garment shown here on a 32" chest model

SIZE

To fit bust

71-76	81-86	91-97	102-107	112-117	122-127	132-137	142-147	152-157	cm
28-30	32-34	36-38	40-42	44-46	48-50	52-54	56-58	60-62	in

Actual bust measurement of garment

107.5	118.5	128.5	138	147.5	158.5	168.5	178	190.5	cm
42¼	46¾	50½	54¼	58	62½	66¼	70	75	in

YARN

Tweed Haze

8	8	9	10	11	11	12	13	14	x 50gm
---	---	---	----	----	----	----	----	----	--------

(photographed in Setting Sun 555)

NEEDLES

1 pair 6mm (no 4) (US 10) needles

TENSION

14.5 sts and 20 rows to 10 cm measured over st st using 6mm (US 10) needles.

Cyclone

by Lisa Richardson

|



SIZE

To fit bust

71-76	81-86	91-97	102-107	112-117	122-127	132-137	142-147	152-157	cm
28-30	32-34	36-38	40-42	44-46	48-50	52-54	56-58	60-62	in

Actual bust measurement of garment

101.5	110	121.5	130	141.5	150	161.5	170	181.5	cm
40	43¼	47¼	51¼	55¼	59	63½	67	71½	in

YARN

Tweed Haze

7	8	9	10	11	11	12	13	14	x 50gm
---	---	---	----	----	----	----	----	----	--------

(photographed in Clear Blue 551)

NEEDLES

1 pair 5½mm (no 5) (US 9) needles

1 pair 6mm (no 4) (US 10) needles

TENSION

14 sts and 28 rows to 10 cm measured over patt using 6mm (US 10) needles.