

maggies™ power pearls

gold power brings function to fashion

MAGGIES multipurpose fabric fasteners now give you and your heavy weight fabrics even more possibilities with new **POWER PEARLS!** The amazing magnetic power of these “pearls” will enable the strongest possible means of securing the thickest, heaviest fabrics without penetrating it and causing damage while staying in place until separated for re-use.

Now it is possible to fasten:

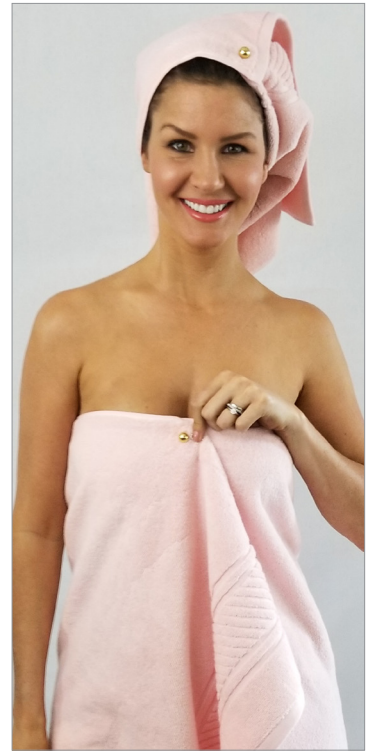
- CANVAS
- BLANKETS
- LEATHERS
- FURS & MORE!
- TOWELING

With normal use, POWER PEARLS will not lose their power and last a lifetime.

EASY TO USE: Simply place a magnet on top and below the fabric to be fastened. May be tightened by pulling fabric’s upper and lower layers. Each pack contains two 1/2” and two 3/8” pearls that can be combined to secure different fabric weights. When less power is needed, combine the POWER PEARLS with optional colored rings for even more uses (colored rings can be purchased separately).



Transform a thick, heavy blanket to a beautiful gown in seconds.



Maggie Power Pearls make it easy to secure a towel.

WARNING: These magnets are very powerful and care should be taken not to pinch skin or fingers. They are NOT TOYS and should always keep in a safe place and out of reach of children. As with all magnets, do not use with Pacemakers or Defibrillators.

www.mymaggies.com