

O-KAM Pro

# App Operation Manual

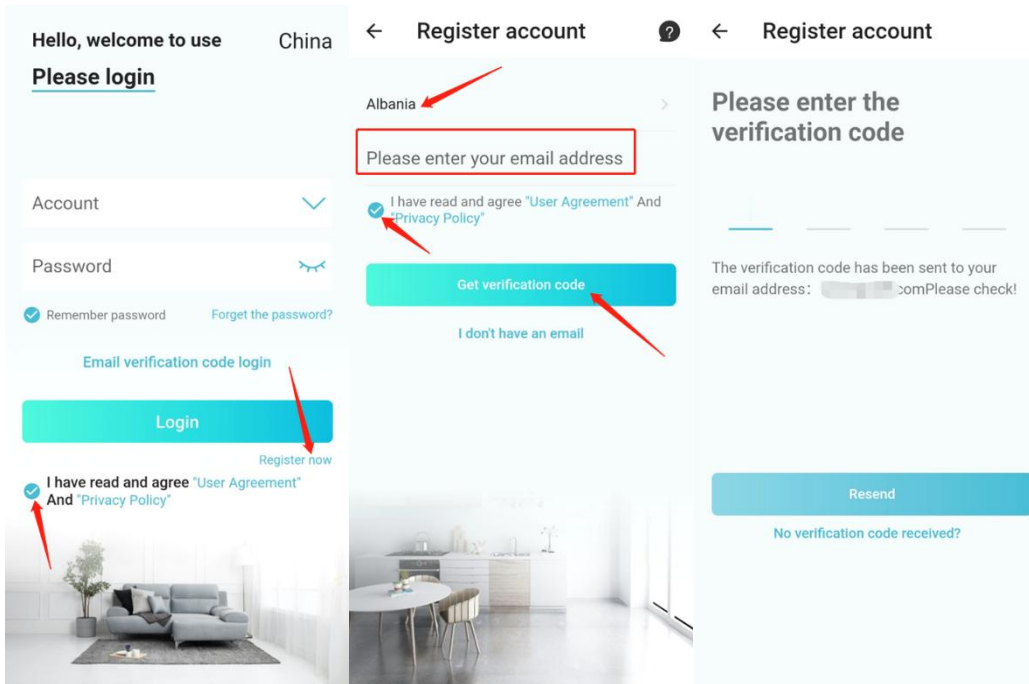
# Catalogs

1.	Register an account.....	3
1.1.	Use email to create an account.....	3
1.2.	No email required to register an account.....	4
2.	retrieve password.....	5
3.	Add Devices.....	6
4.	Sharing devices.....	8
5.	View Live stream.....	9
5.1.	Zoom in on live footage.....	10
5.2.	Pan-tilt and cruise function.....	10
5.2.1.	Vertical cruise and horizontal cruise.....	11
5.2.2.	Pre-position and caretaker's position.....	12
5.2.3.	Toggle Clarity.....	13
5.2.4.	Intercom.....	14
5.2.5.	Manually turn on/off alarms and white lights.....	15
5.2.6.	Screenshot and Record.....	15
5.2.7.	Setting the night vision mode.....	16
5.2.8.	View Cloud Playback.....	17
5.2.9.	View Local Playback.....	17
5.2.10.	Home Page Display Mode.....	18
6.	Camera Settings.....	19
6.1.	Notification Settings.....	20
6.1.1.	Setting the cell phone tone *Supports iOS system only.....	20
6.1.2.	Setting the alarm sound on the device.....	22
6.1.3.	Enable e-mail notification.....	22
6.2.	Device Settings.....	23
6.2.1.	Changing the camera name.....	24
6.2.2.	Setting the microphone and speaker volume.....	24
6.2.3.	Setting the night vision mode.....	25
6.2.4.	Setting the screen flip.....	25
6.2.5.	Anti-flicker setting.....	26
6.2.6.	Switching the WIFI to which the device is connected.....	26
6.2.7.	Delete Device.....	27
6.3.	Power mode.....	28
6.3.1.	Select the preset Power mode.....	28
6.3.2.	Turn motion detection on or off.....	29
6.3.3.	Setting the Motion Detection Frequency.....	29
6.3.4.	Setting the video recording duration.....	30
6.3.5.	Setting up humanoid judgment.....	30
6.3.6.	Setting the device to wake up automatically.....	31
6.4.	Device Health.....	32
6.4.1.	Update Firmware.....	32
6.5.	Monitoring Function.....	33
6.5.1.	Turn motion detection on or off.....	33
6.5.2.	Setting the motion detection distance.....	34
6.5.3.	Setting the Motion Detection Frequency.....	34
6.5.4.	Setting up humanoid judgment.....	35
6.5.5.	Enable cloud storage upload switch.....	35

6.5.6.	Setting the video recording duration .....	36
6.5.7.	Turn on the alarm flashers .....	37
6.5.8.	Setting the Activity .....	37
6.5.9.	Setting the detection time period .....	38
6.6.	AI Smart Service .....	39
6.6.1.	Buy Cloud Storage .....	40
7.	Message .....	40
7.1.	Filtering messages .....	41
7.2.	Delete Message .....	41
8.	My Page .....	42
8.1.	Email Address Binding and Switching .....	42
8.2.	Cancel an account .....	43
8.3.	Setting the app language .....	44
8.4.	Setting up offline alerts .....	44
8.5.	Camera Auto-play video .....	45
8.6.	Setting firmware update preferences .....	45
8.7.	System Privilege Setting .....	46
8.8.	View App Version .....	46

# 1. Register an account

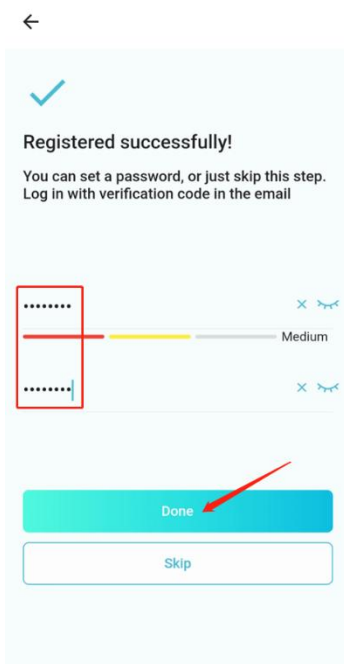
## 1.1. Use email to create an account



a. Check the User Agreement and click Register Now

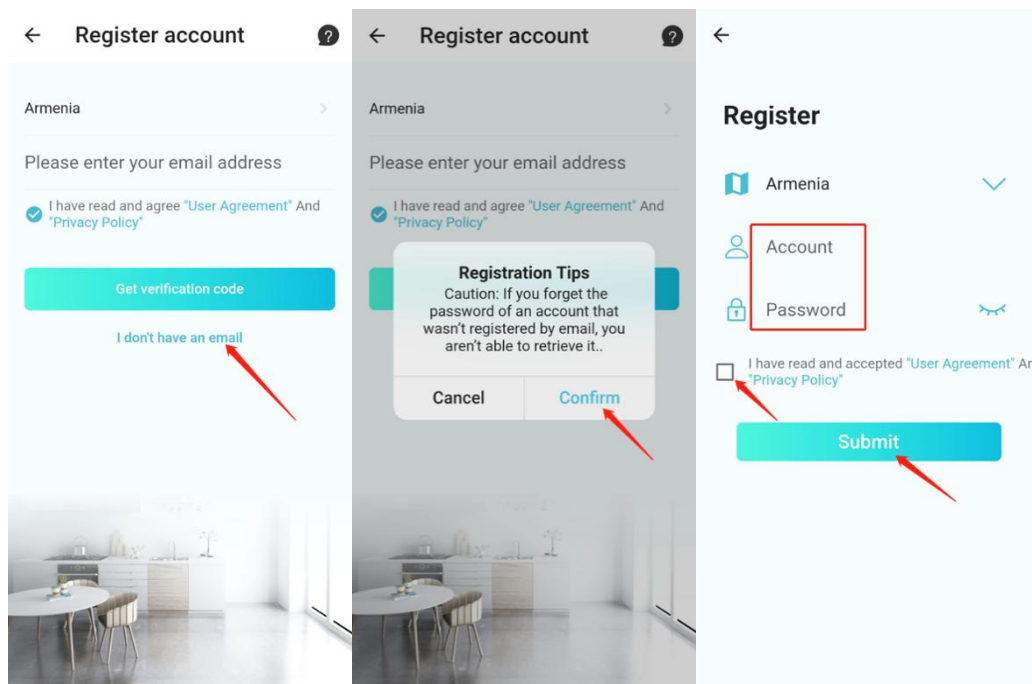
b. Select the account region, enter the email, check the user Agreement, and click Get the verification code

c. Enter the verification code to automatically jump to the next step



d. After setting the password, click Finish

## 1.2. No email required to register an account



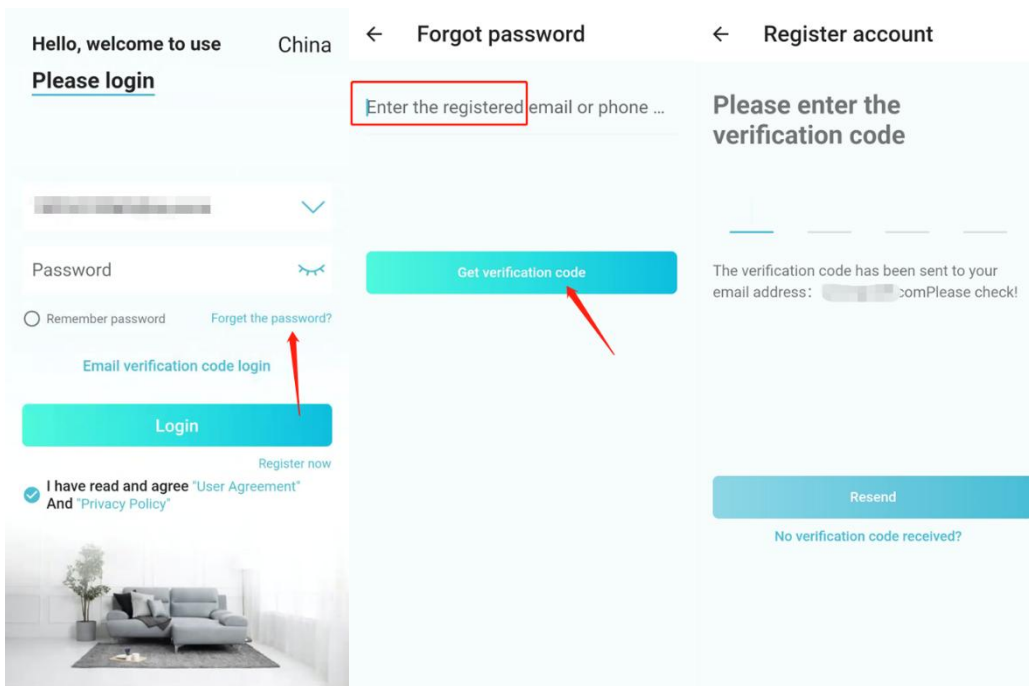
a. Go to the Register account page and click I don't have Email

b. Instructions for Consent registration

c. Enter your username and password and check the User Agreement

**Note:** Once the password of the account registered with this method is forgotten, it will not be recovered

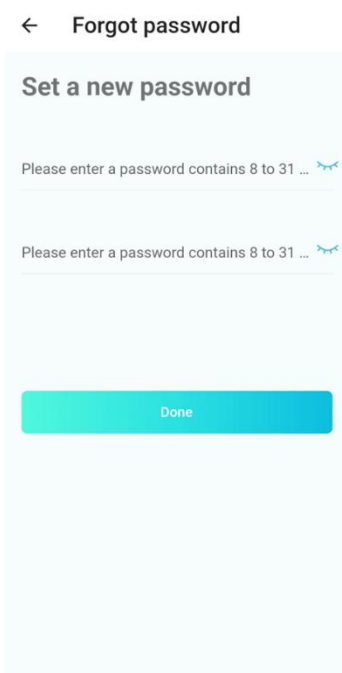
## 2. retrieve password



a. Click Forget password

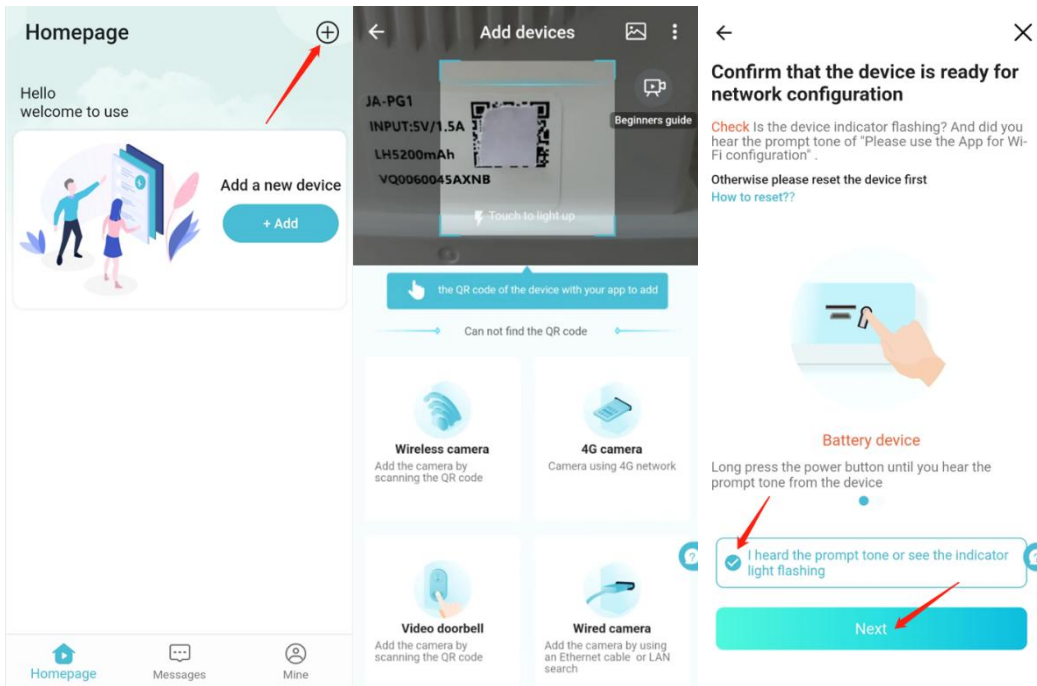
b. Enter the email and click to get the verification code

c. Enter the verification code to automatically jump to the next step

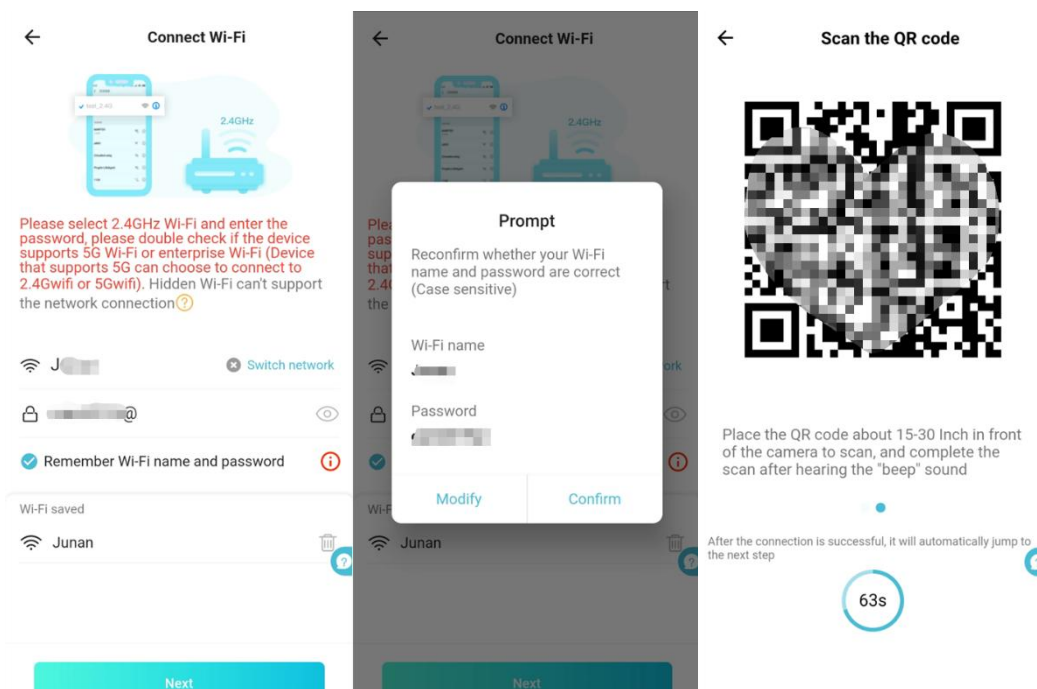


d. Set a new password and click Finish

### 3. Add Devices

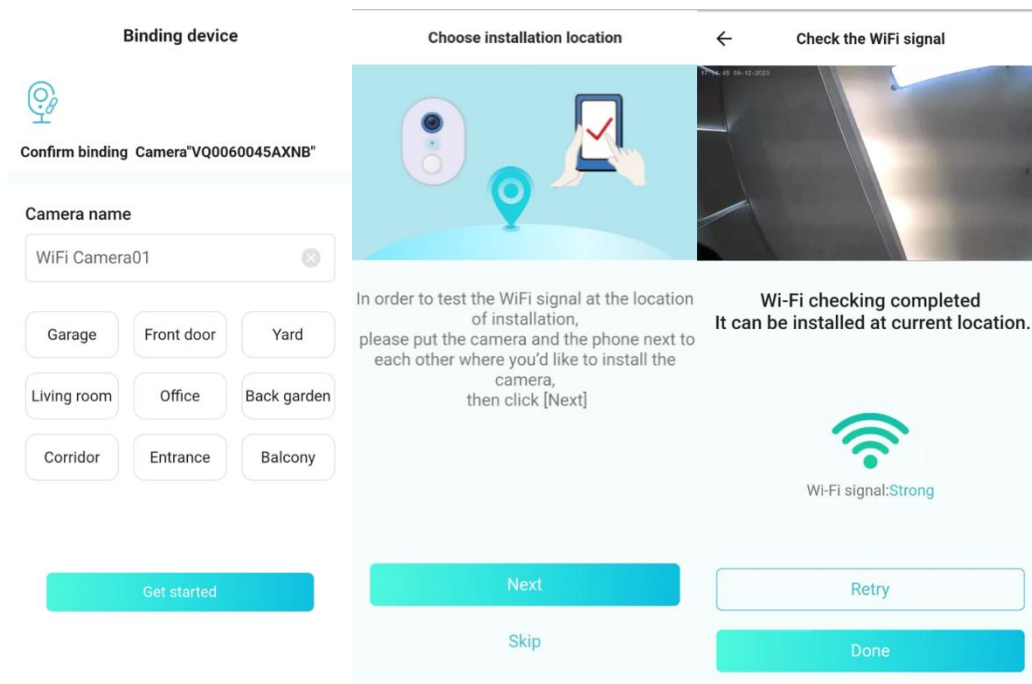


- a. Click on the top right corner
- b. Scan the QR code of the body
- c. After checking the options, click Next

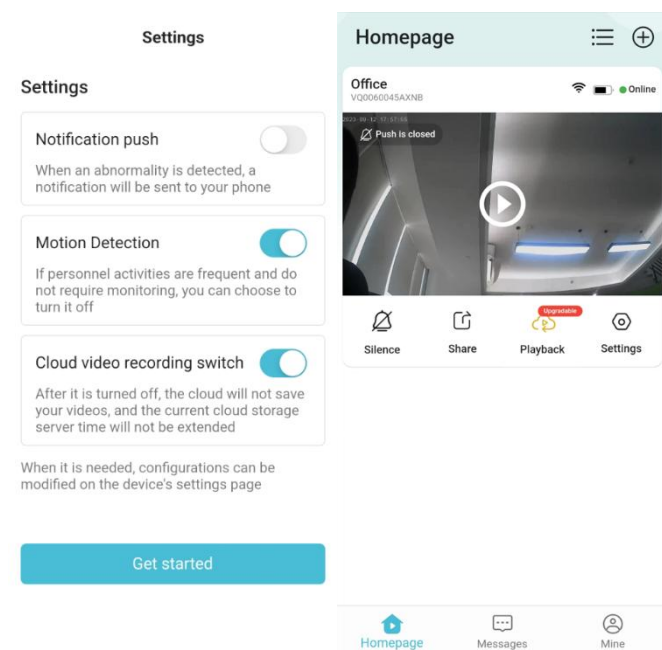


- d. Select the WiFi network to connect to, click Next, and check the password again

e. Use the camera camera to scan the QR code. After scanning successfully, the device will emit a "drop" sound and automatically jump to the next step



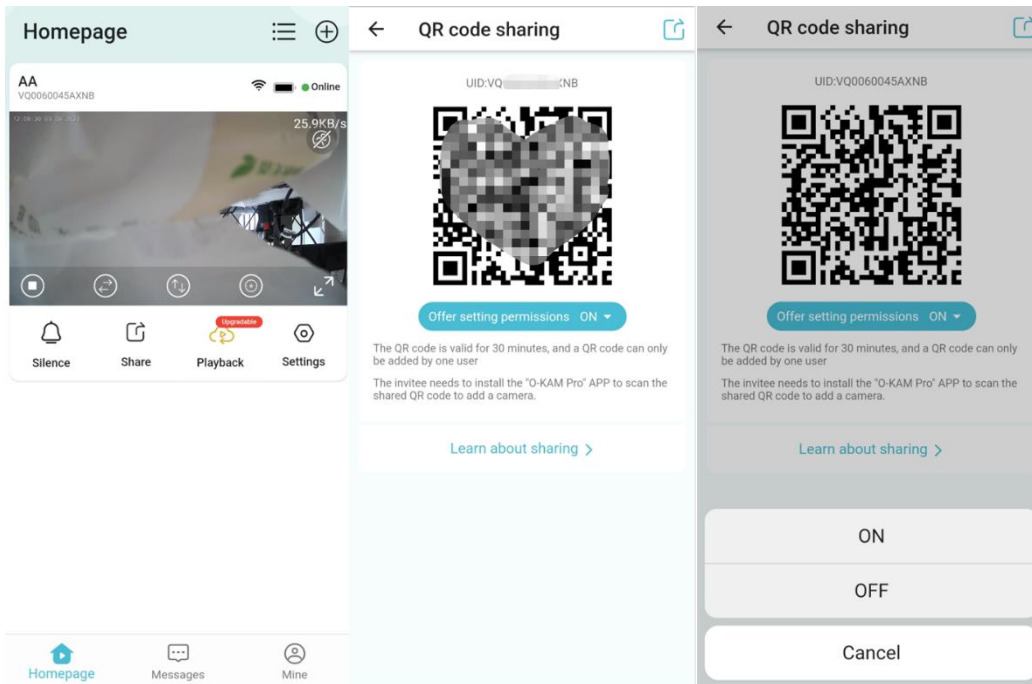
f. After successful connection, set the camera name, click the preset name below to fill in automatically, and click Next



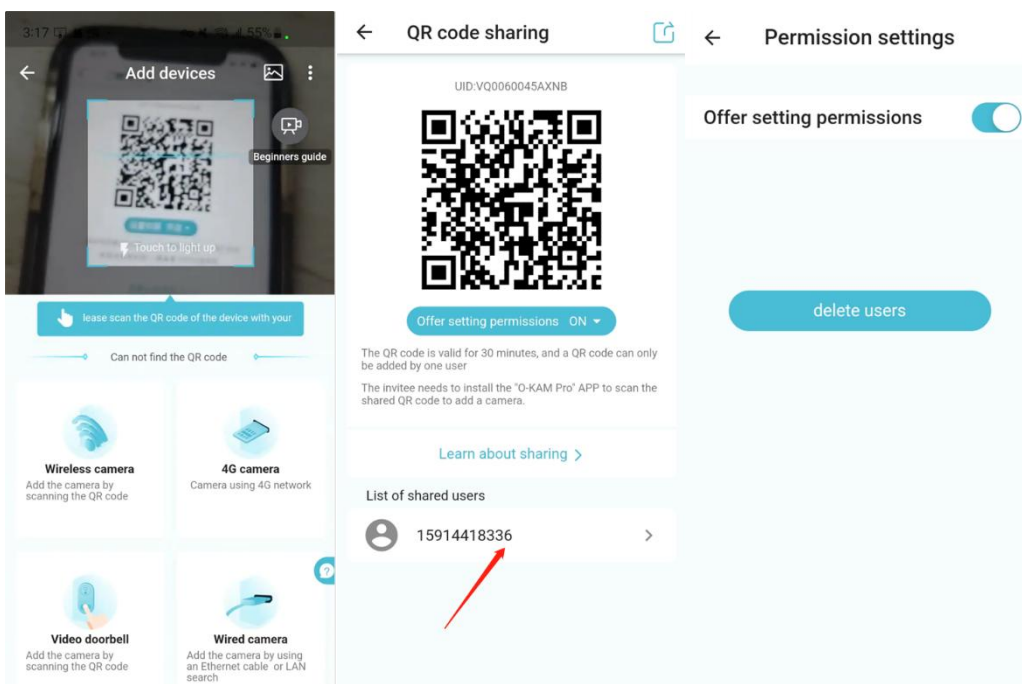
g. After the detection network and preset are completed, the camera is added successfully



## 4. Sharing devices



- Click to share
- Choose whether to provide setting permissions (on or off)
- Use the guest account to scan the generated QR code and add it

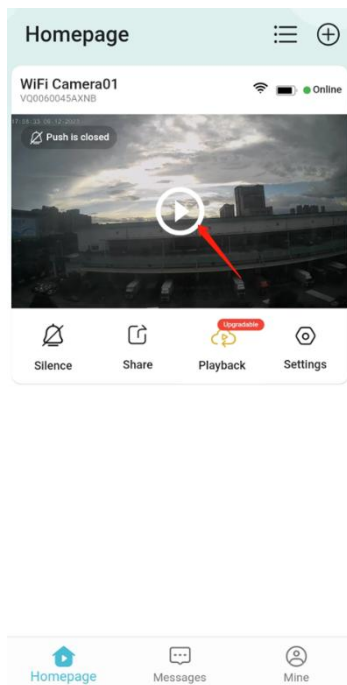


- After adding successfully, you can see the list of users, click Users

e. Toggle the setting permission of the shared user or remove the shared user

f. Devices can only be shared to accounts in the same region

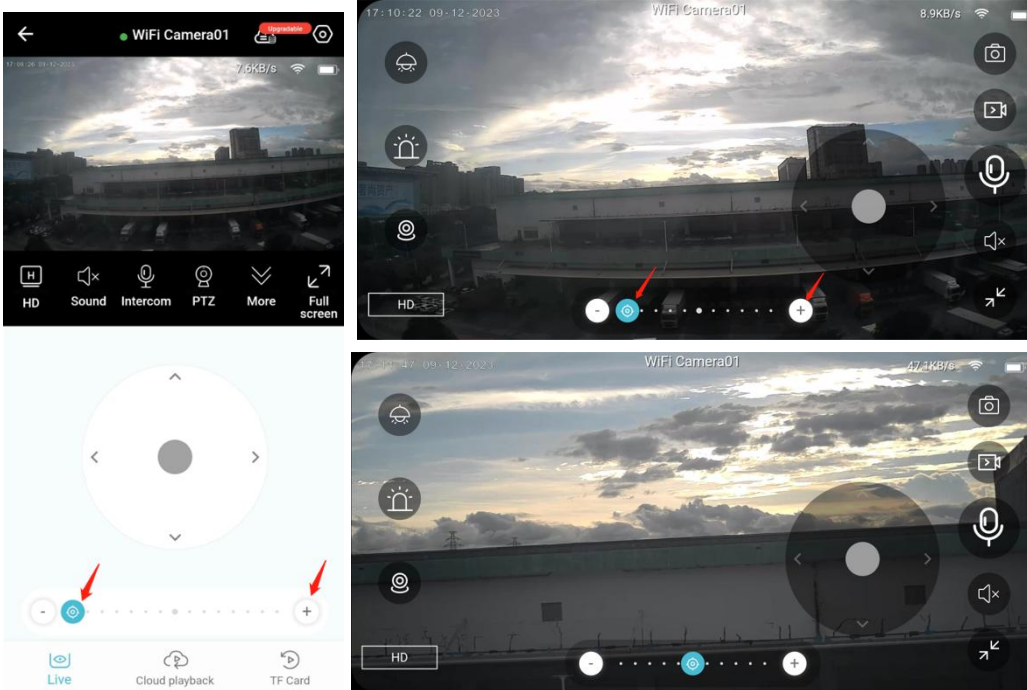
## 5. View Live stream



a. After adding the camera, click the Play button to view the live broadcast

**Note:** There are differences in the layout of the live broadcast interface for different models of cameras, The figure provided is only for illustration, please refer to the actually displayed interfaces as final.

## 5.1. Zoom in on live footage

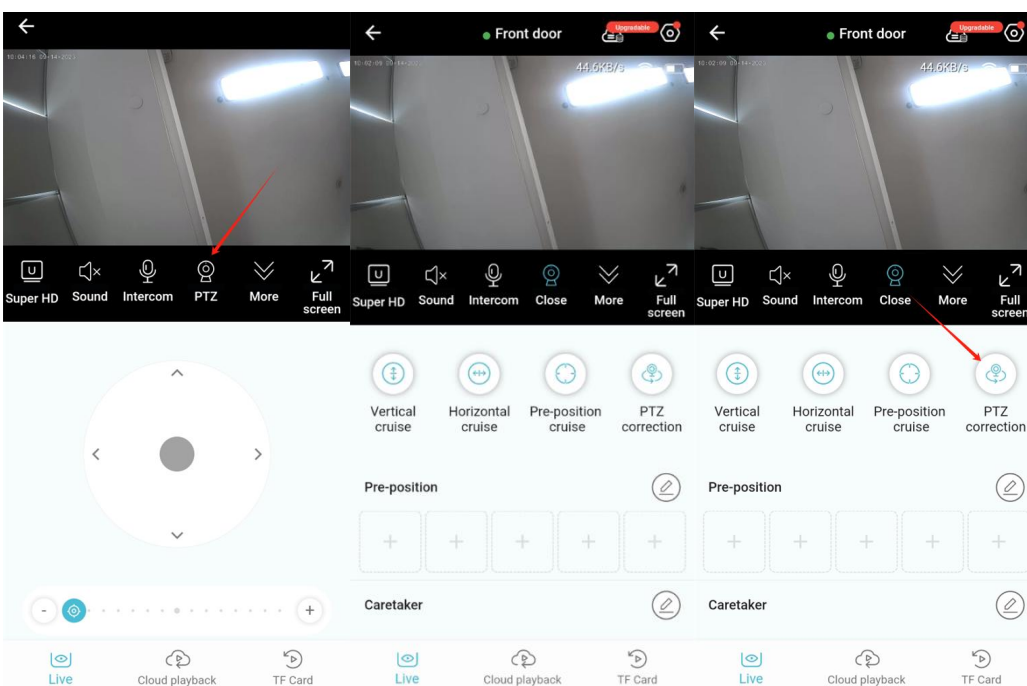


a. Click the Play button to enter the live broadcast page

b. Drag or click the button to zoom in or out

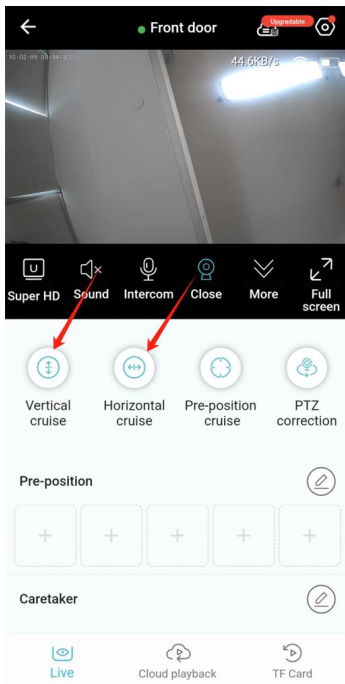
**Note:** This feature requires your camera to have a PTZ function

## 5.2. Pan-tilt and cruise function



- a. Click the roulette wheel on the live broadcast page to control the PTZ, and click the PTZ button to enter other Settings of PTZ
- b. Before cruising and setting the Pre-position, it is necessary to perform the PTZ correction

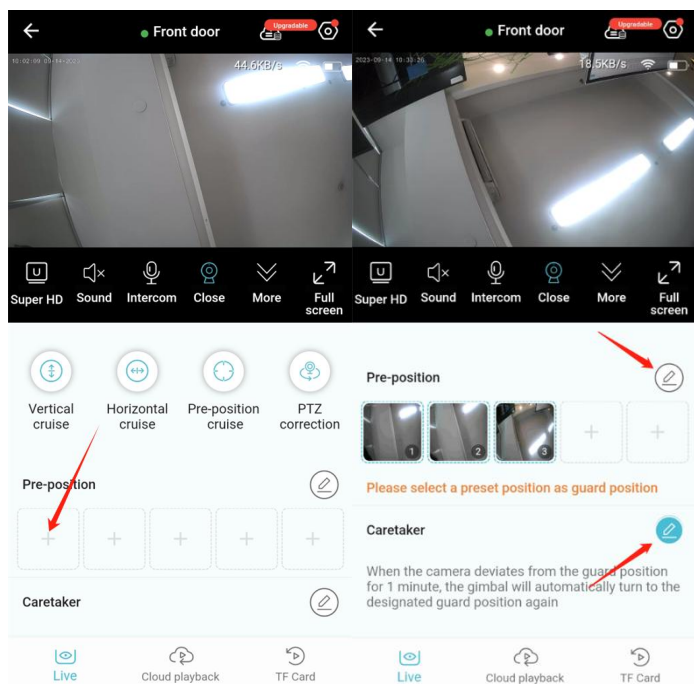
## 5.2.1. Vertical cruise and horizontal cruise



- a. If your camera is battery powered, then clicking Vertical Cruise will make the camera go back and forth at 100° vertical, and clicking horizontal cruise will make the camera go back and forth at 355° horizontal.
- b. If your camera needs to be plugged in, then clicking on Vertical Cruise will cause the camera to cruise vertically for 10 minutes, and clicking on Horizontal Cruise will cause the camera to cruise horizontally for 10 minutes

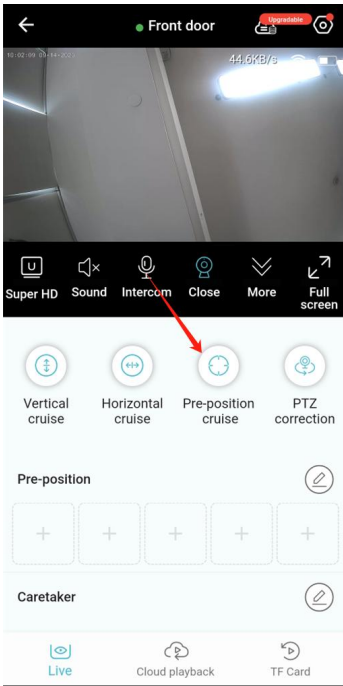
**Note:** No video will be recorded during the cruise

## 5.2.2. Pre-position and caretaker's position



- Click the + sign to set the current position as a frequently viewed position. Up to five can be set, When you click on an already set Frequently Viewed Position, the device will automatically go to the corresponding position.
- Click Edit to delete the added position.
- Click Edit next to the caretaker position to select a permanent position as a caretaker position.

Note: If you set the caretaker position, the camera will automatically return to the caretaker position before hibernating. Note: If you set the caretaker position, the camera will automatically return to the caretaker position before hibernating.

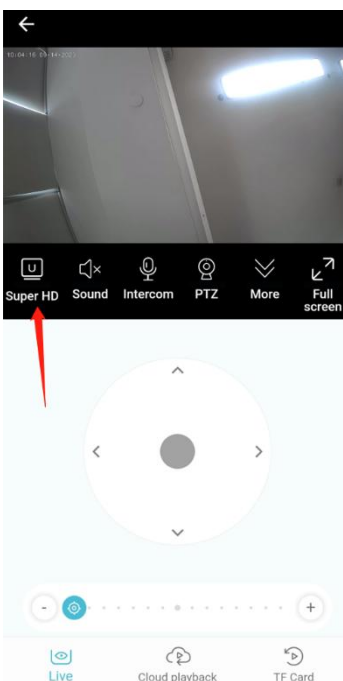


d. Click on Frequent Viewing Position Cruise, the camera will automatically view the set Pre-Positions in order.

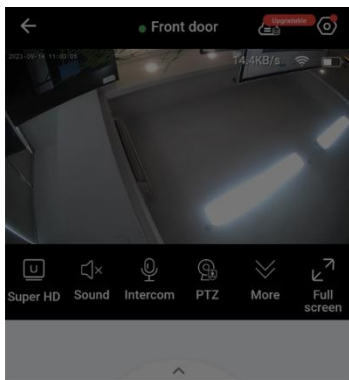
e. If your camera is battery-powered, then the camera will make a tour of the Pre-Positions in turn

f. If your camera needs to be plugged in, then the camera will make a tour of the Pre-Positions in turn for ten minutes

### 5.2.3. Toggle Clarity



a. On the Live Streaming page, click on the location shown



Switch definition



Super HD



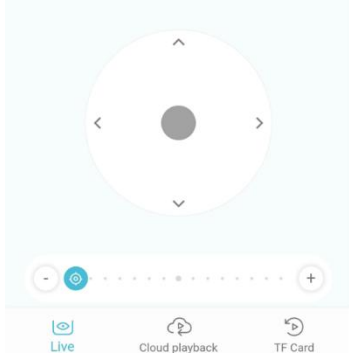
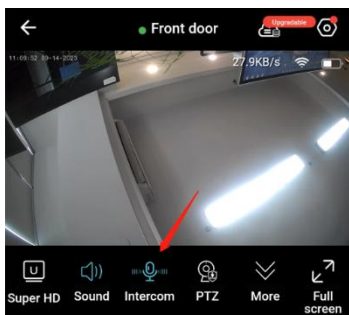
HD



SD

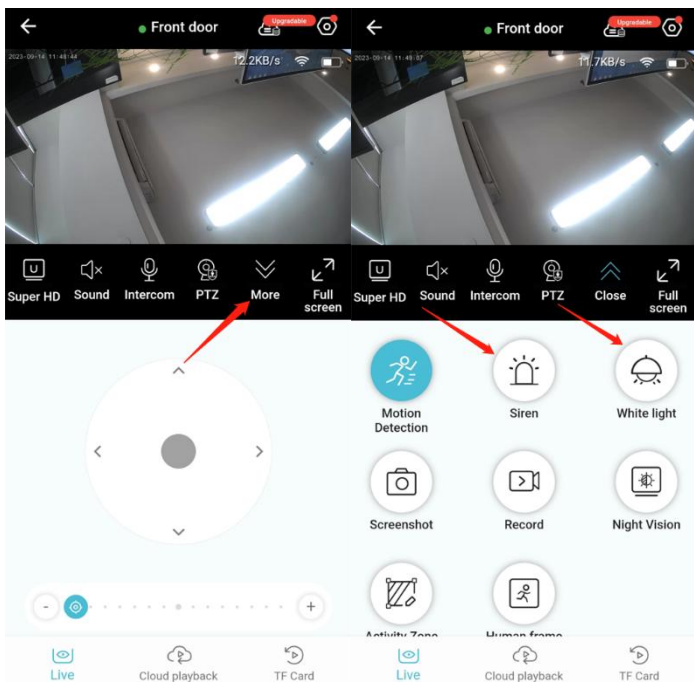
b. Choose your appropriate level of clarity

## 5.2.4. Intercom



a. Tap the microphone button to turn on the intercom, tap again to turn it off

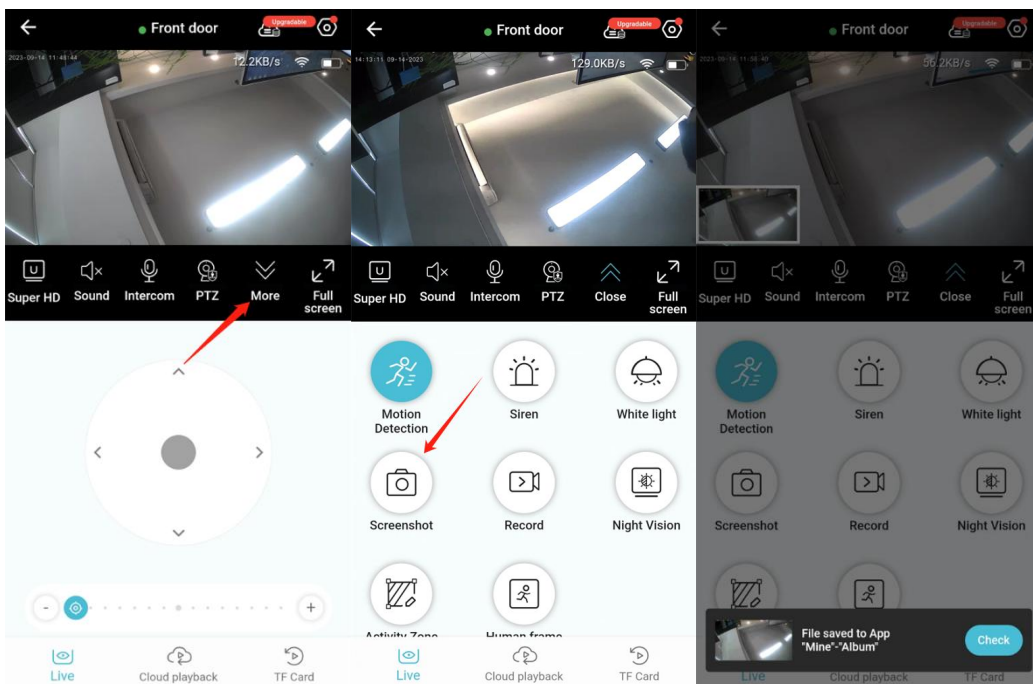
## 5.2.5. Manually turn on/off alarms and white lights



a. On the live page, click 'More'

b. Click to turn on the alarm/white light and click again to turn off the alarm/white light

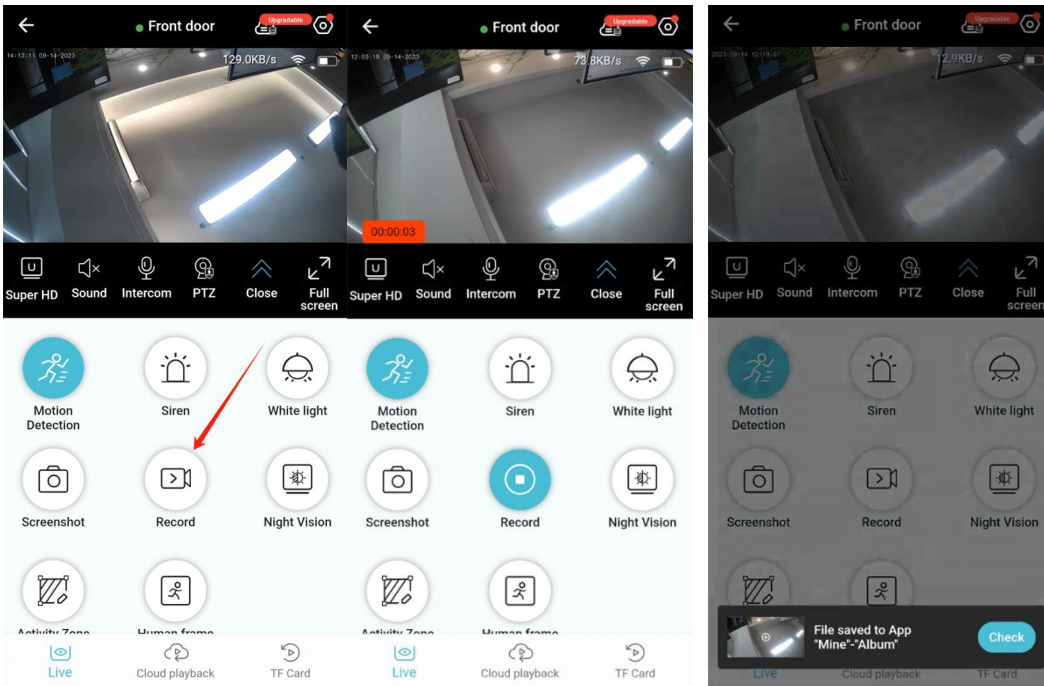
## 5.2.6. Screenshot and Record



a. On the live page, click 'More'



b. Click the 'screenshot' button

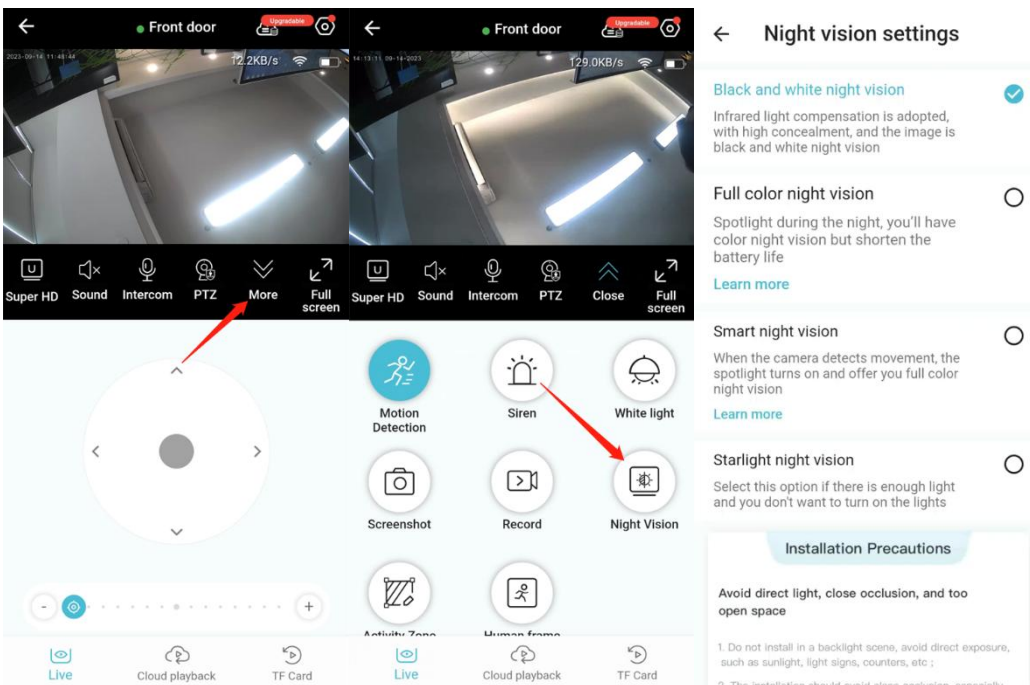


c. Click the Record button, The camera will start recording the current live feed.

d. Click the Record button again to stop recording.

e. Pictures and videos are automatically saved to your phone's photo albums

## 5.2.7. Setting the night vision mode

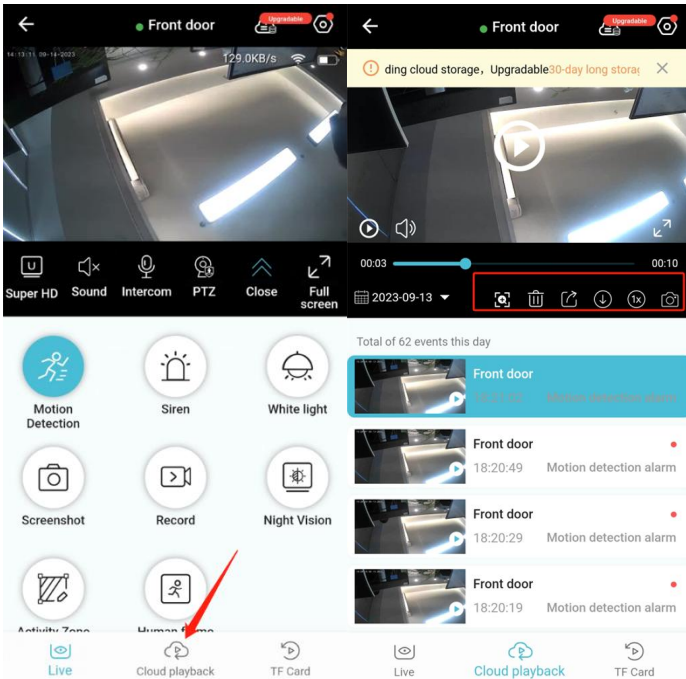


a. On the live page, click 'More'

b. Click for night vision

c. Choose the night vision mode that suits you

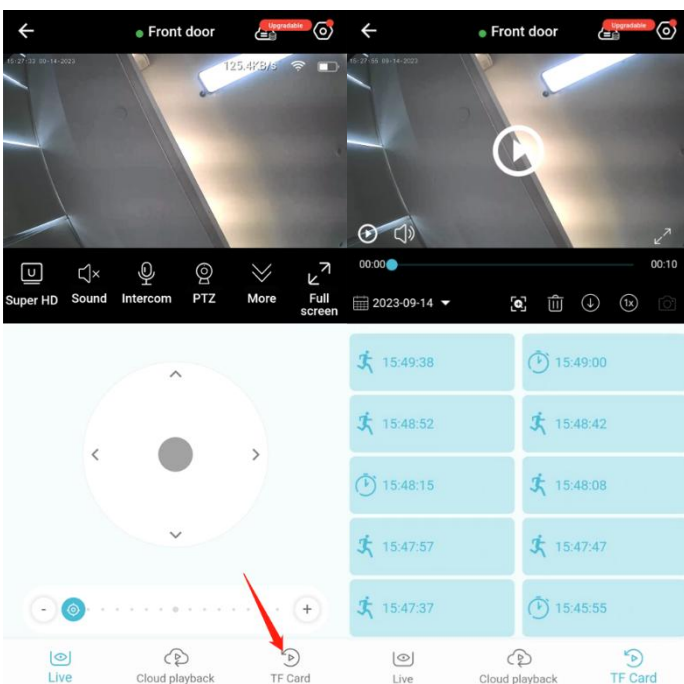
## 5.2.8. View Cloud Playback



a. Click on Cloud Playback

b. Select a video and zoom in, delete, share, download, multiply speed and take screenshots.

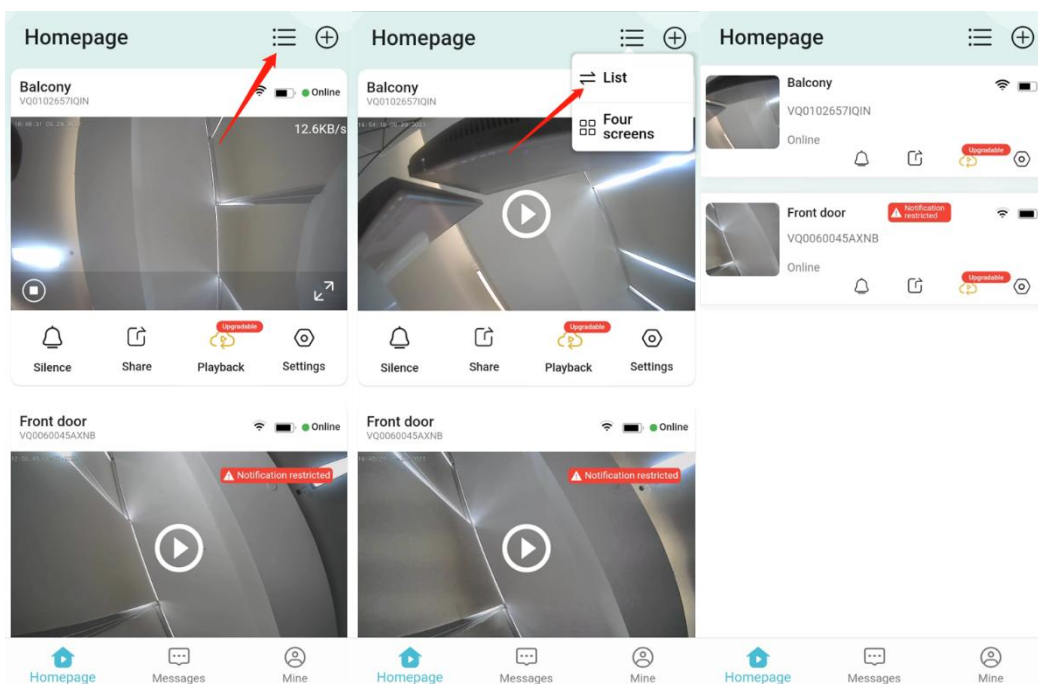
## 5.2.9. View Local Playback



a. Click on 'Local Playback' in the navigation bar below.

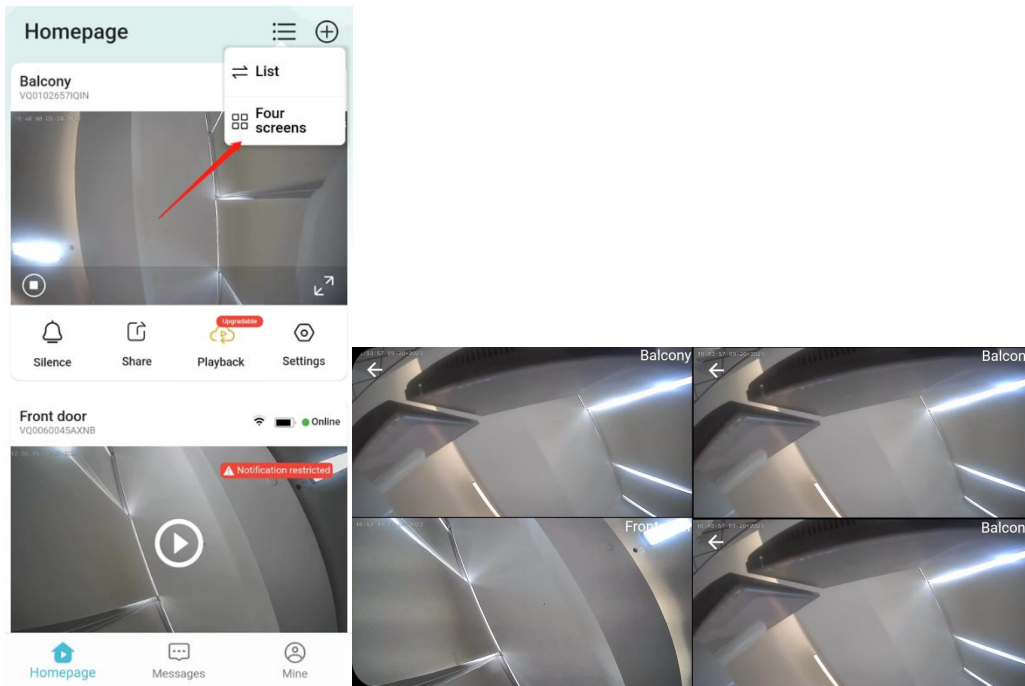
c. The camera will start recording every time it wakes up to a live broadcast and save it to the SD card, the clock icon indicates the video of waking up to a live broadcast, and the human icon indicates the video of triggering an alarm.

## 5.2.10. Home Page Display Mode



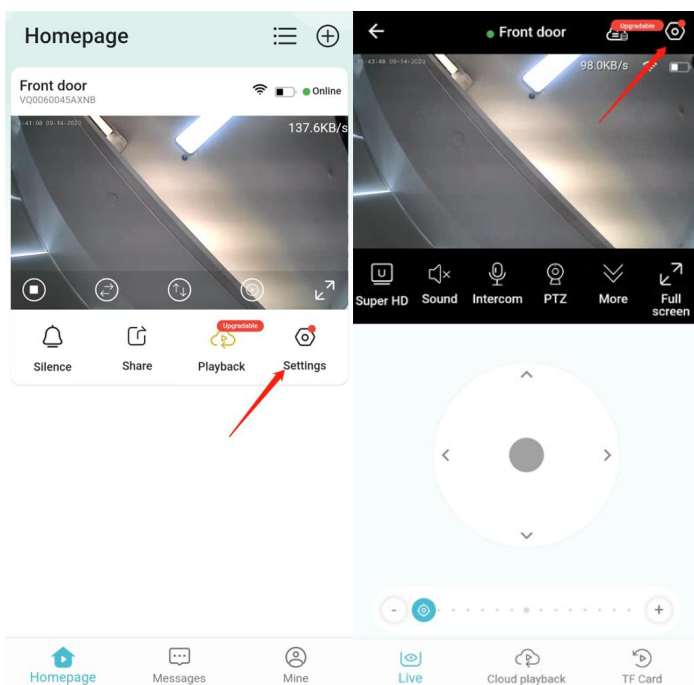
a. Click on the three dots in the upper right corner of the display icon, you can switch between large picture mode, small picture mode or four-screen mode by yourself

b. You can set auto live screen in big picture mode. In APP - My - Settings - Camera Auto Play Video, see [8.5](#) for more details



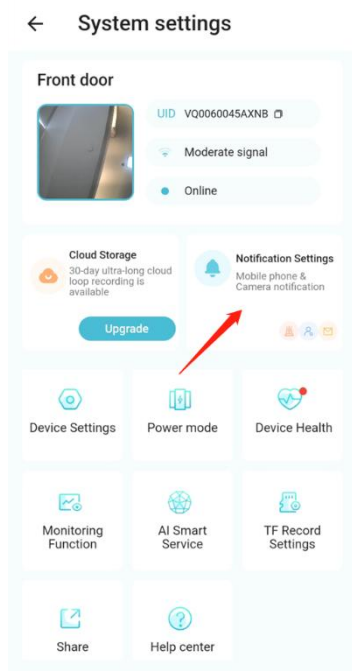
c. In four-screen mode, you can drag the screen left and right to watch multiple devices, and click on one of the device screen to enter the full-screen picture of the device monitoring.

## 6. Camera Settings



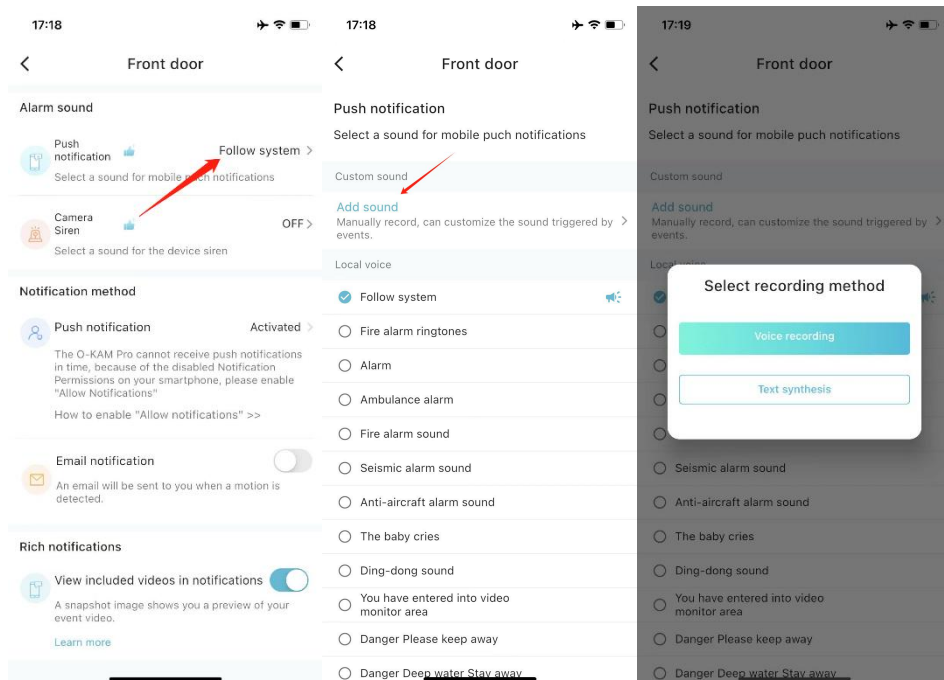
a. Click the Settings icon in the lower right corner of the camera on the homepage, or click the Settings icon in the upper right corner of the live page to enter the system settings of the camera.

## 6.1. Notification Settings



a. Click Notification Settings

### 6.1.1. Setting the cell phone tone **\*Supports iOS system only**

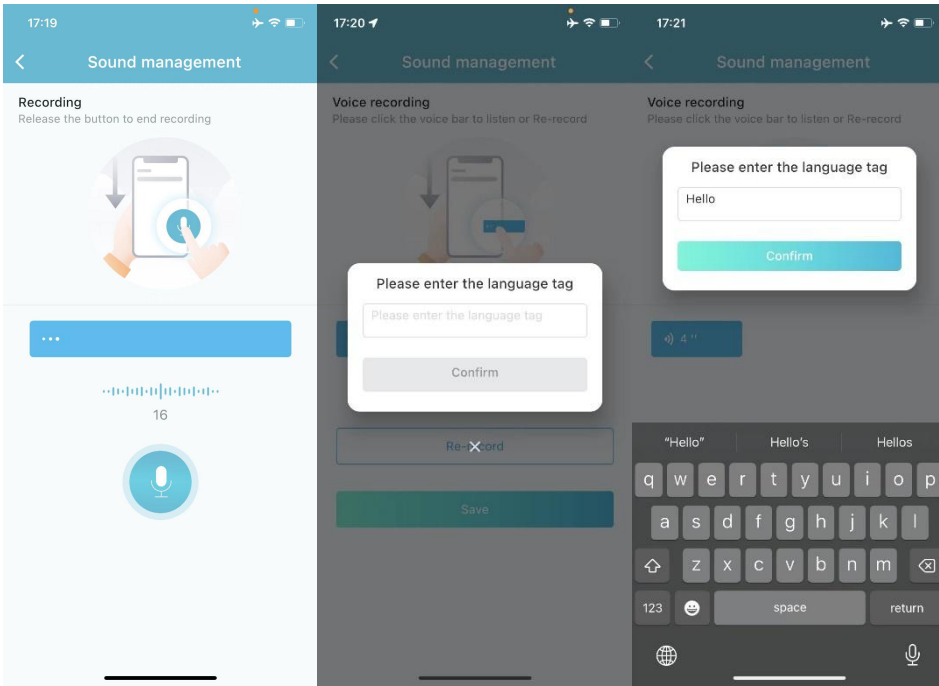


a. Tap the phone notification sound

b. Select Local Sound or Custom Sound

c. Click Add Sound

d. Tap Voice Recording

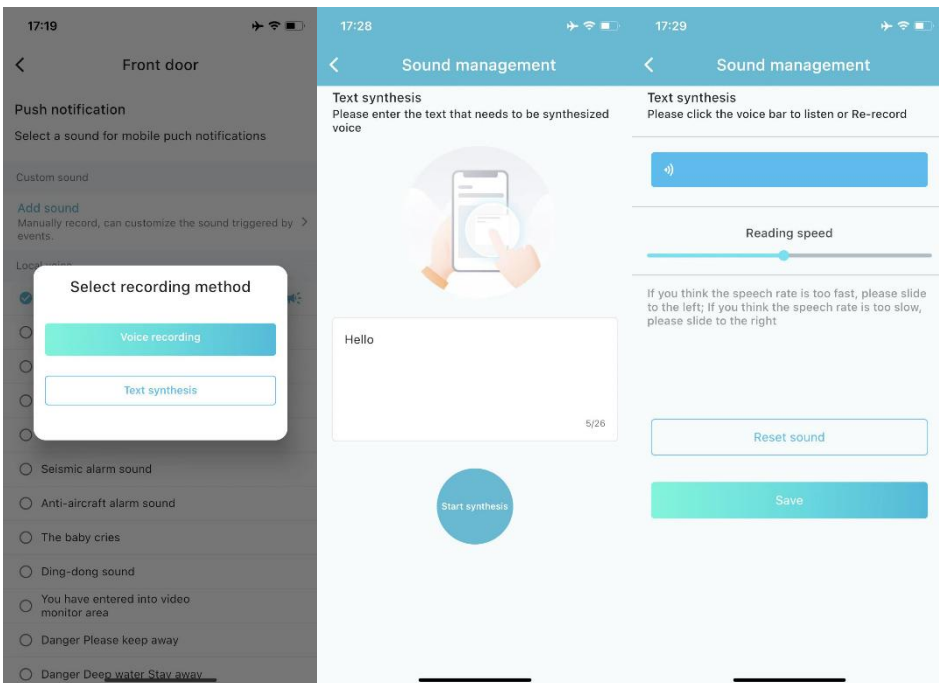


e. Long press the record button to record voice

f. After recording, click the voice bar to listen to it, click Save, or re-record until you are satisfied.

g. Input the language tag, after input, click to confirm

h. Add customized voice successfully



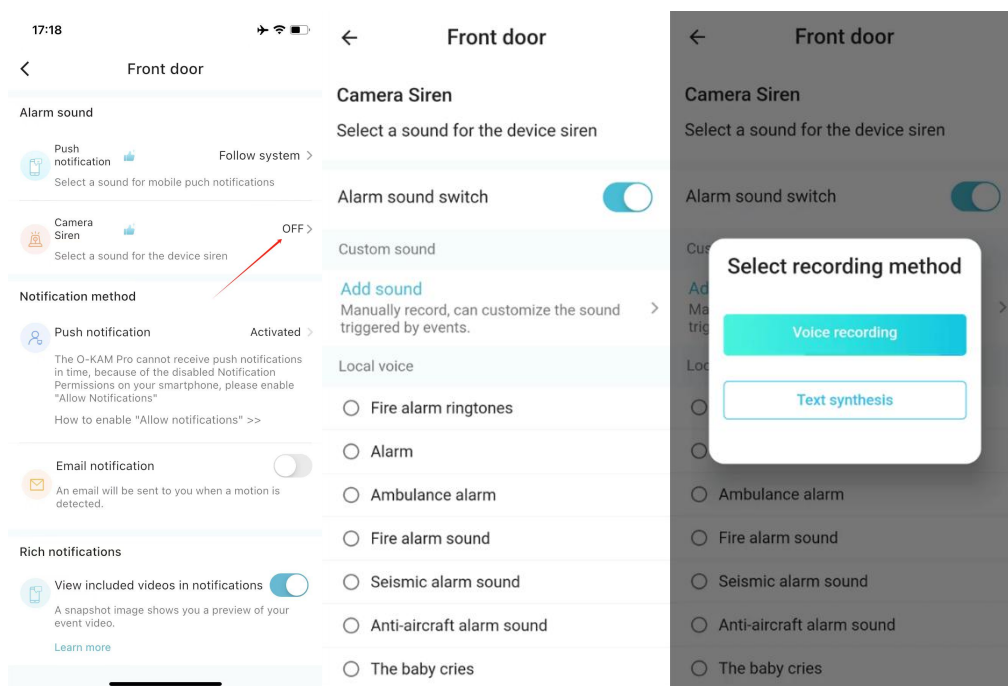
i. Click Text Synthesis

j. Input text, click Start synthesis, the input text will be displayed in the form of speech.

k. Listen to the synthesized voice, adjust the speed of voice playback, or reset the voice until you are satisfied.

I. Click Save

## 6.1.2. Setting the alarm sound on the device.

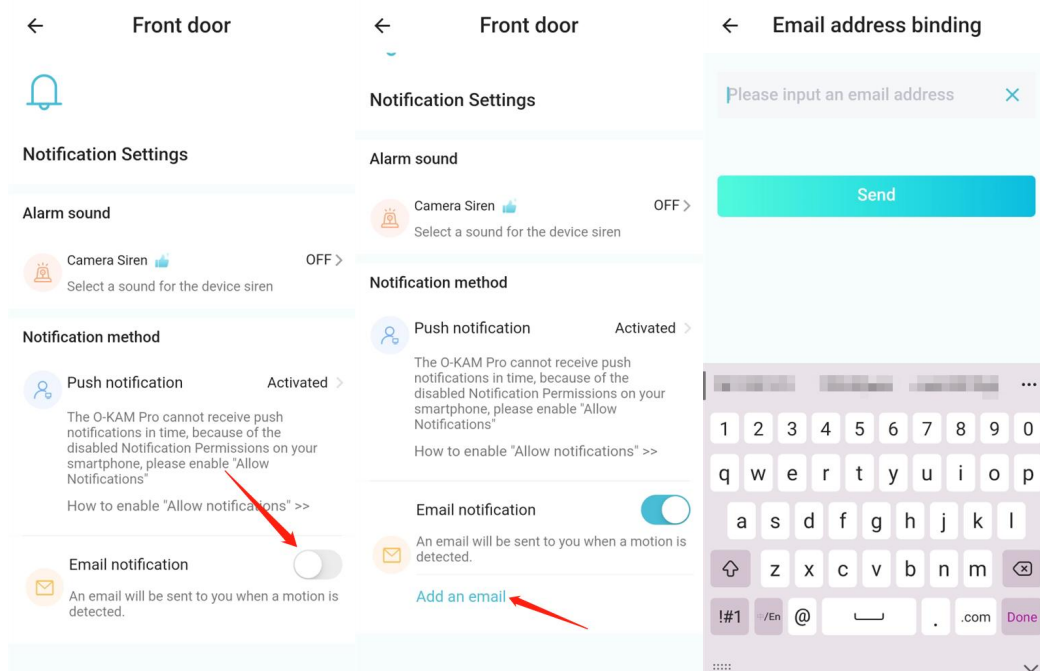


a. Click Device Alarm Sound

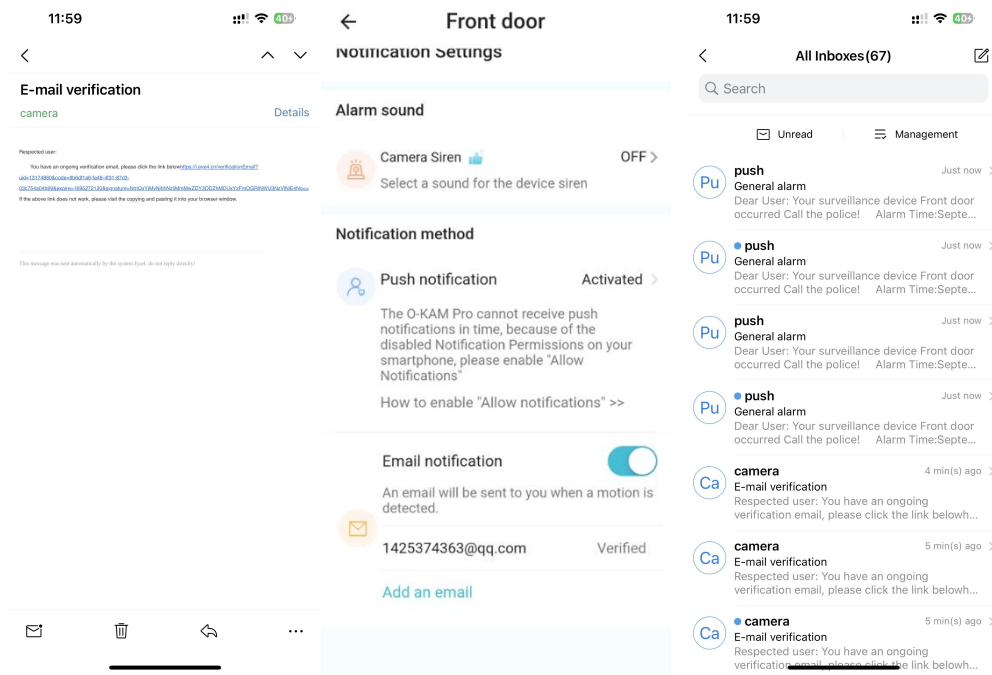
b. Select Local Sound or Custom Sound

c. Setting as above

## 6.1.3. Enable e-mail notification

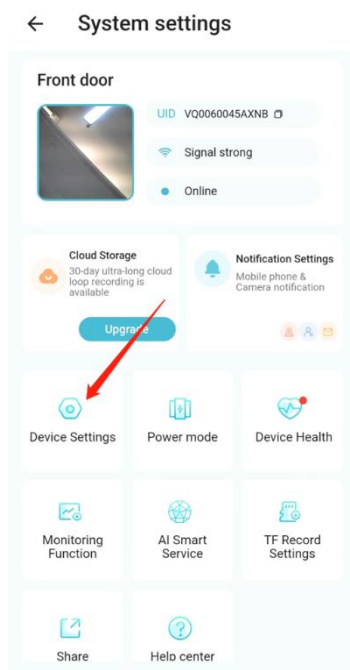


- Turn on the mailbox notification switch
- Click Add Mailbox
- Enter the added mailbox



- Log in to your mailbox and click the verification link
- After verification, you can receive email alert notification

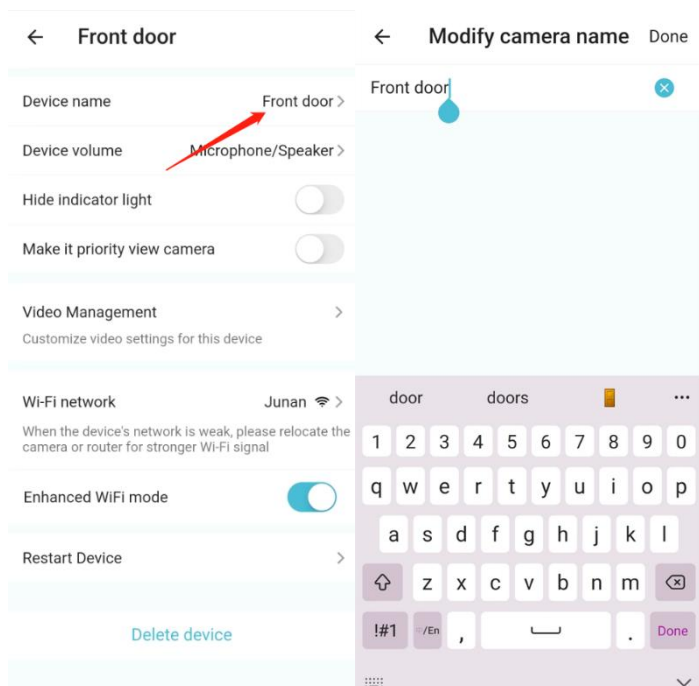
## 6.2. Device Settings



- Click Device Settings



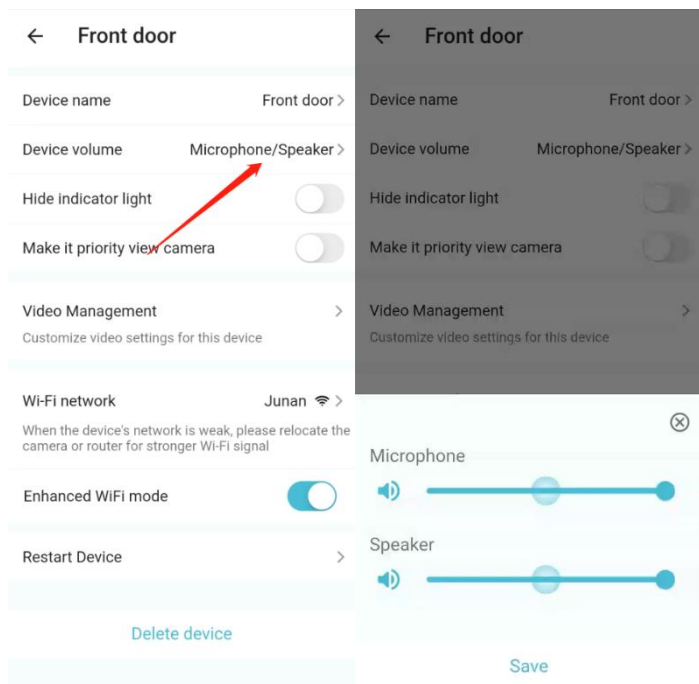
## 6.2.1. Changing the camera name



a. Click Camera on the Device settings screen and enter the changed name.

b. Click Done

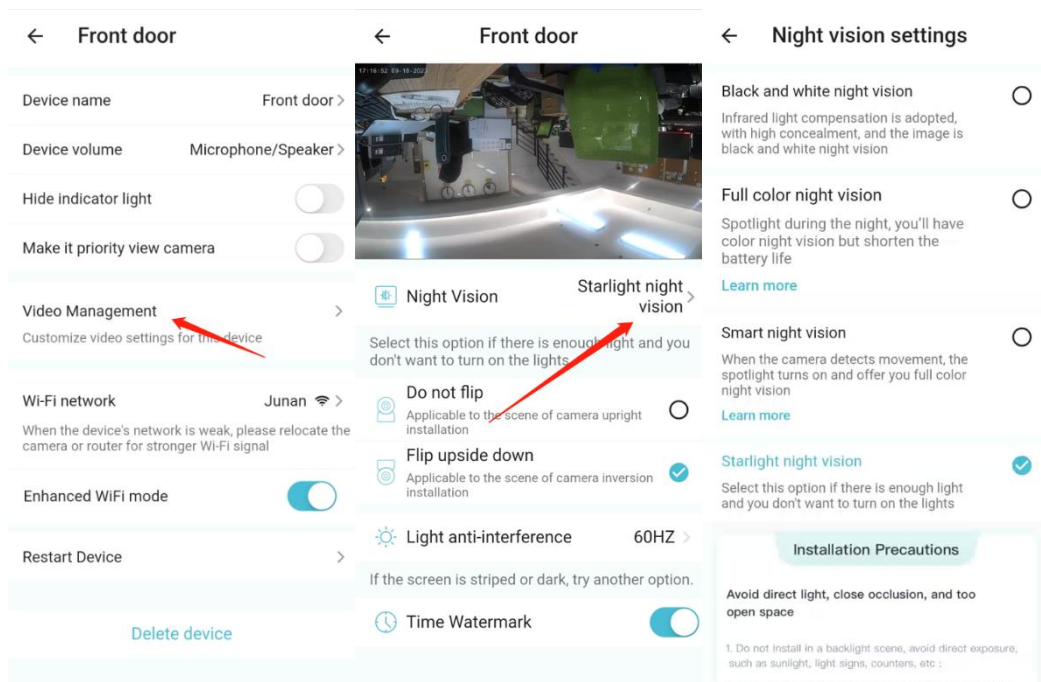
## 6.2.2. Setting the microphone and speaker volume



a. On the Device settings page, click Device volume.

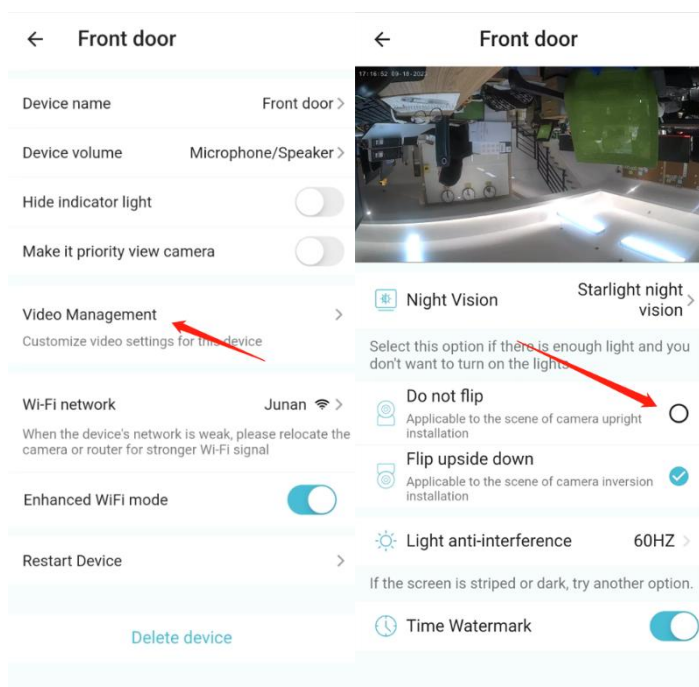
b. Adjust the volume of the microphone and speaker, and then click Save when finished.

## 6.2.3. Setting the night vision mode



- Click on Video Management
- Click on Night Vision
- Select the appropriate night vision mode

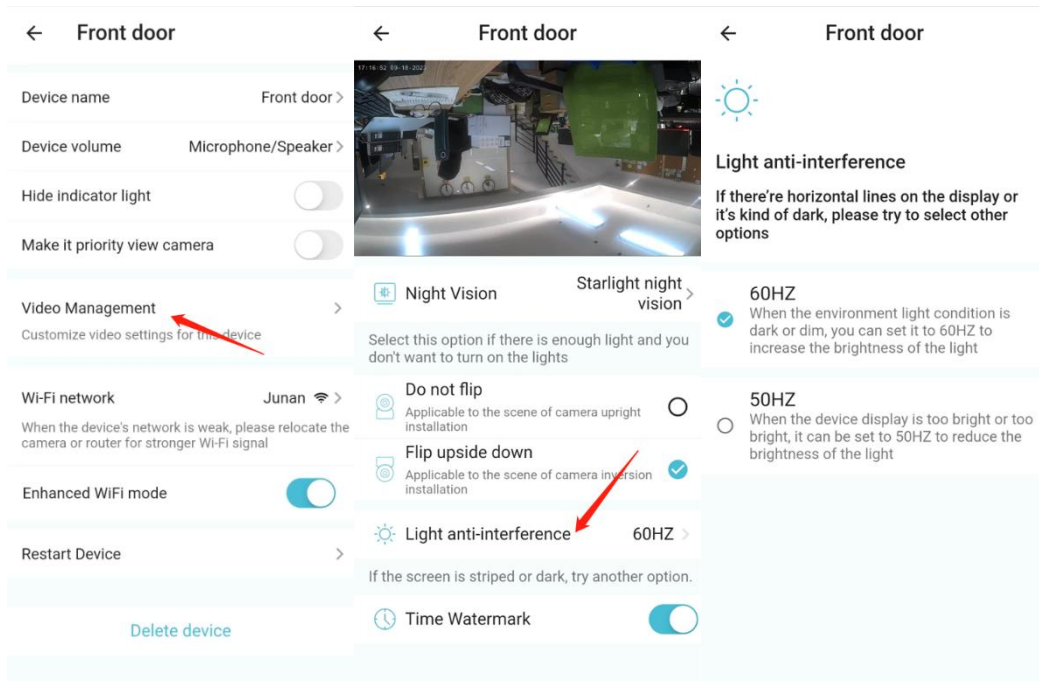
## 6.2.4. Setting the screen flip



- Click on Video Management

b. Select whether to flip the screen

## 6.2.5. Anti-flicker setting

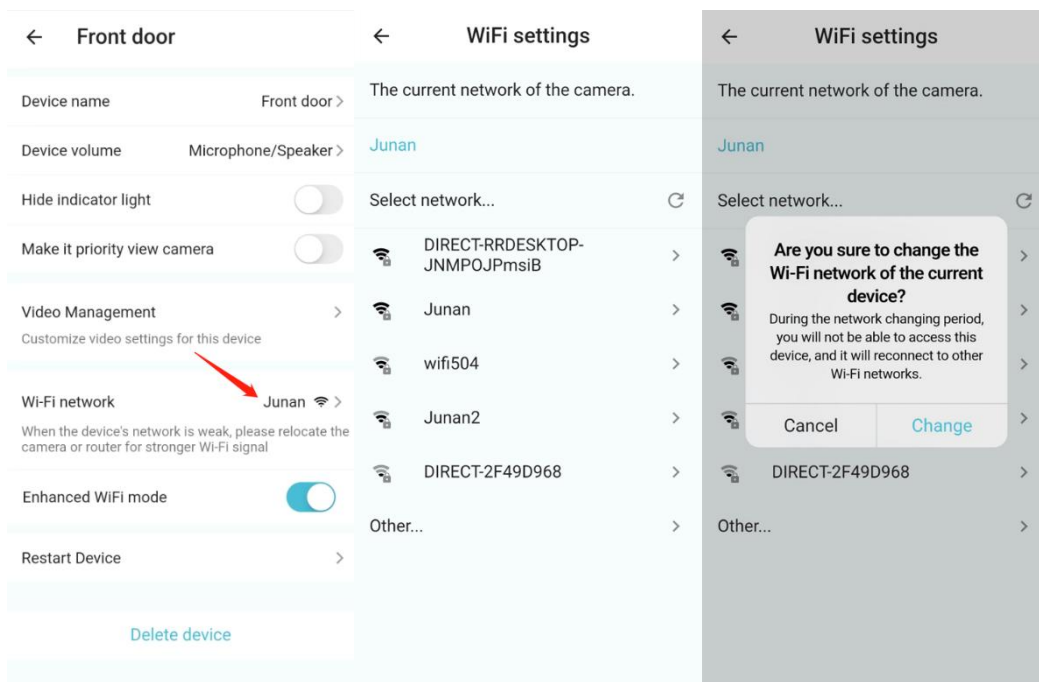


a. Click on Video Management

b. Click on Lighting Anti-Interference

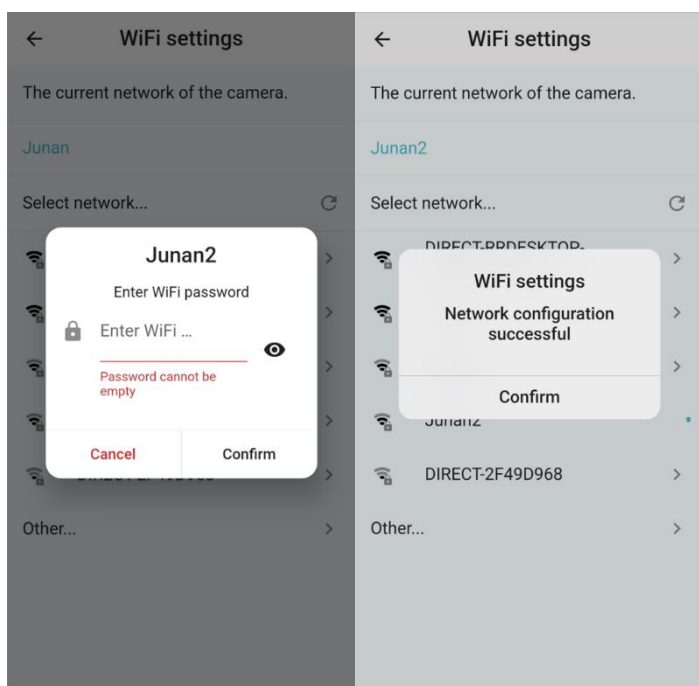
c. If the video has a flickering condition, switch to another option

## 6.2.6. Switching the WIFI to which the device is connected



a. In the device settings, tap WiFi networks

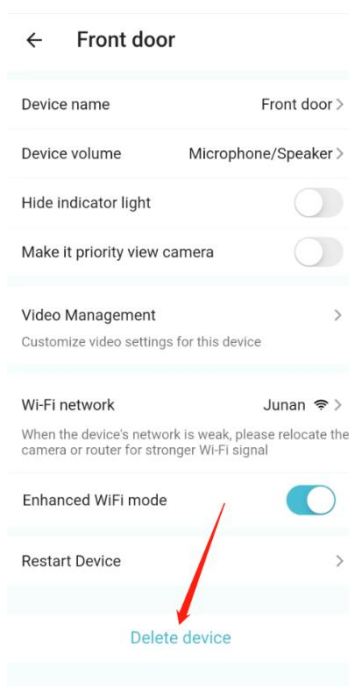
b. Select the target WiFi for switching



c. Enter the correct WiFi password

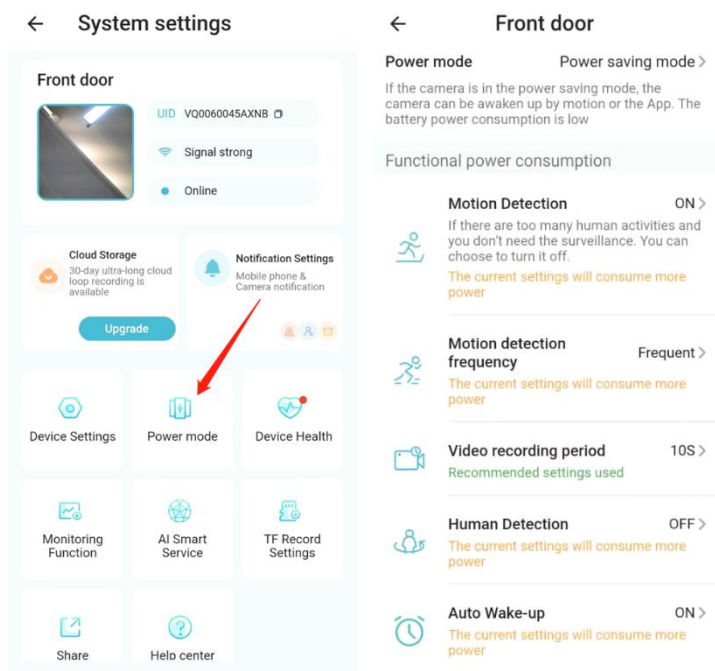
d. Wait for a moment for the switch to complete

## 6.2.7. Delete Device



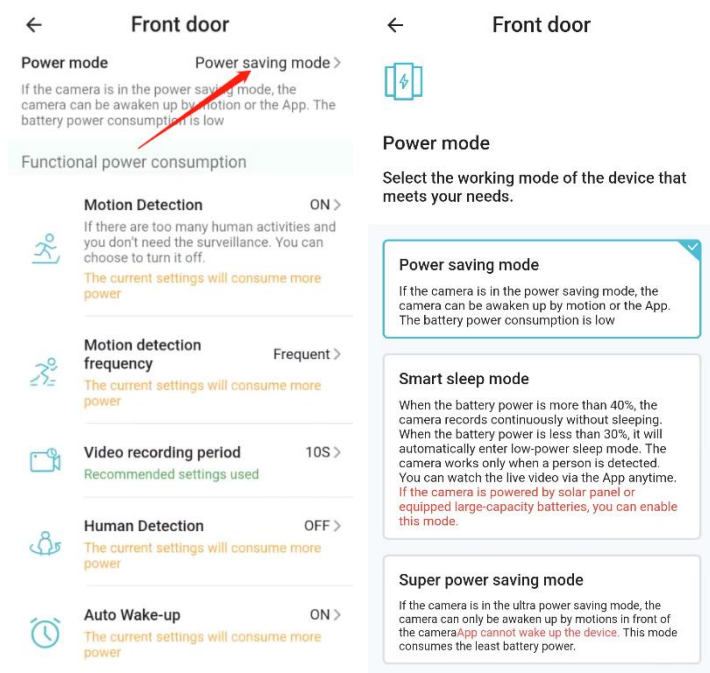
a. Enter the camera device settings and click Delete Device

## 6.3. Power mode



a. Click Power mode

### 6.3.1. Select the preset Power mode

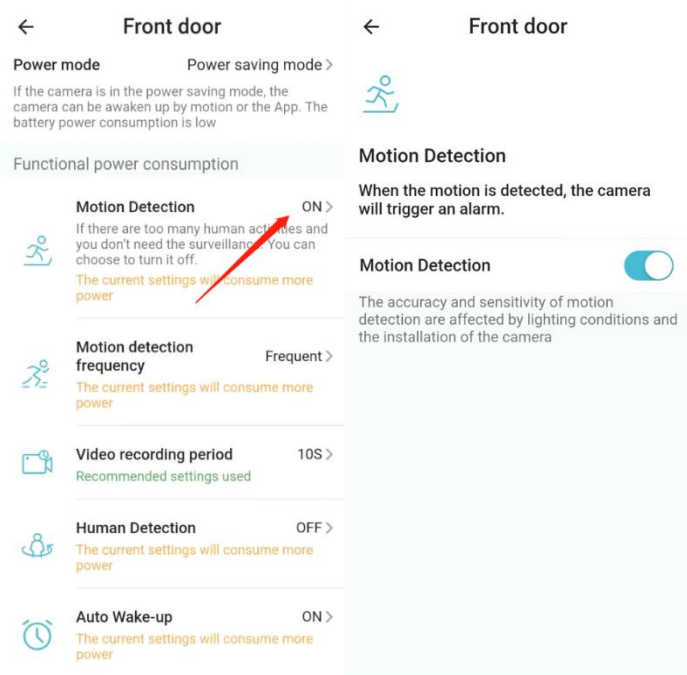


a. Click on the power mode

b. If you select Smart Sleep Mode, the camera will record continuously for 5 minutes at a time when the battery level is greater than 40% until the battery level is less than 30%, when it will automatically enter low-power

hibernation mode. The camera works only when it detects a person. It is recommended to enable this mode when the camera is powered by a solar panel

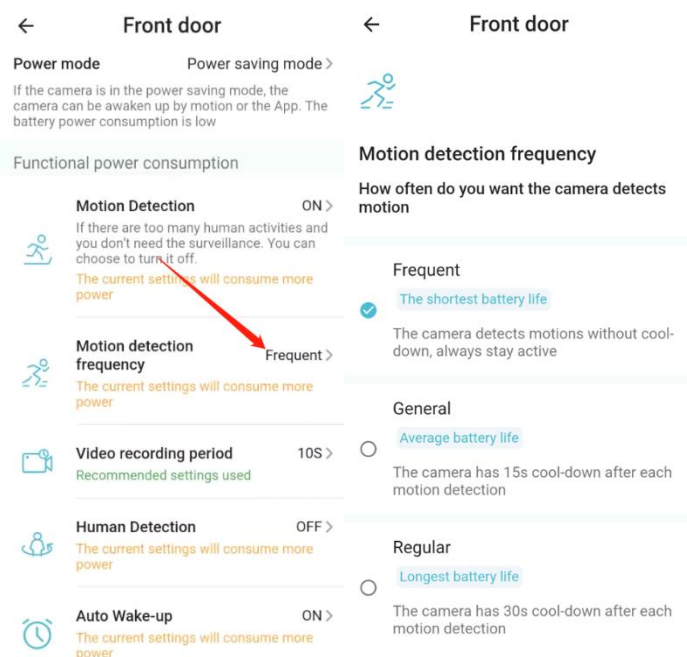
## 6.3.2. Turn motion detection on or off



a. Tap to turn on motion detection

b. Tap again to turn off motion detection

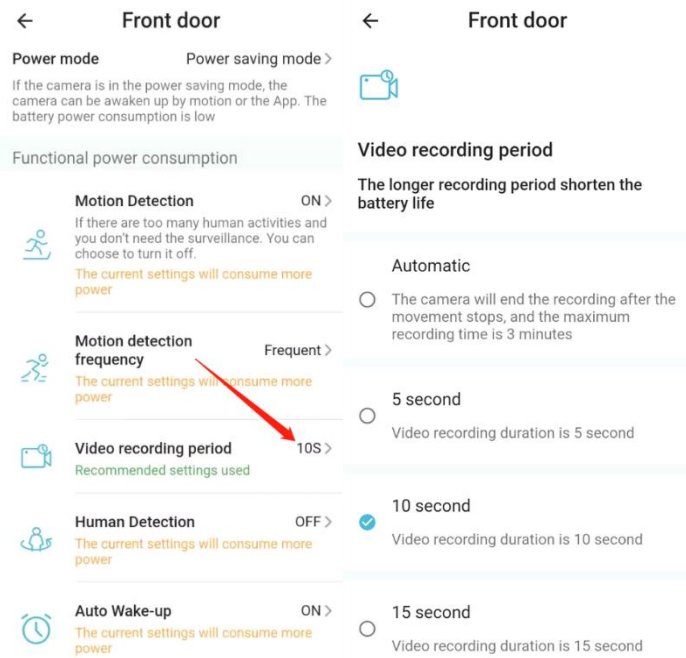
## 6.3.3. Setting the Motion Detection Frequency



a. Click Motion Detection Frequency

b. Set how often the device detects motion, the more frequent the detection frequency, the shorter the recording interval, and the faster the camera consumes power.

### 6.3.4. Setting the video recording duration

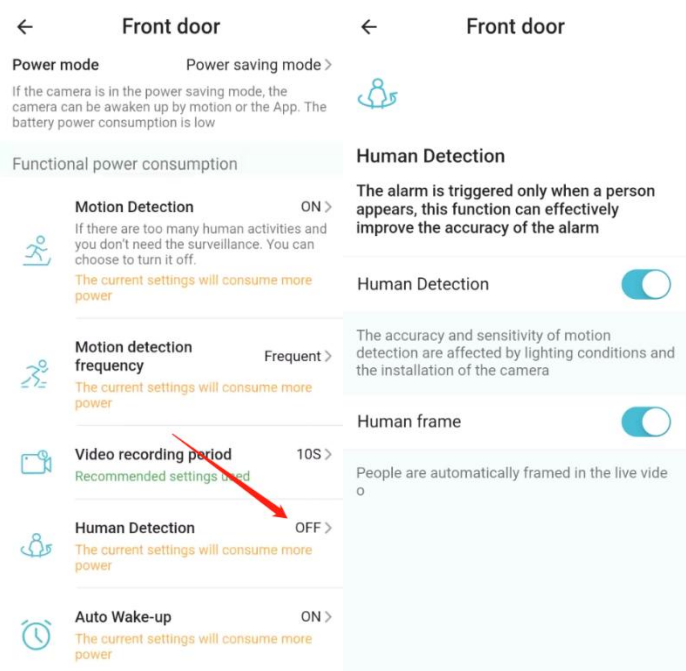


a. Click the video recording period

b. Select the desired recording length, the longer the recording time, the faster the camera consumes power.

c. Recording length level: Auto (max. 3min), 5s, 10s, 15s, 30s

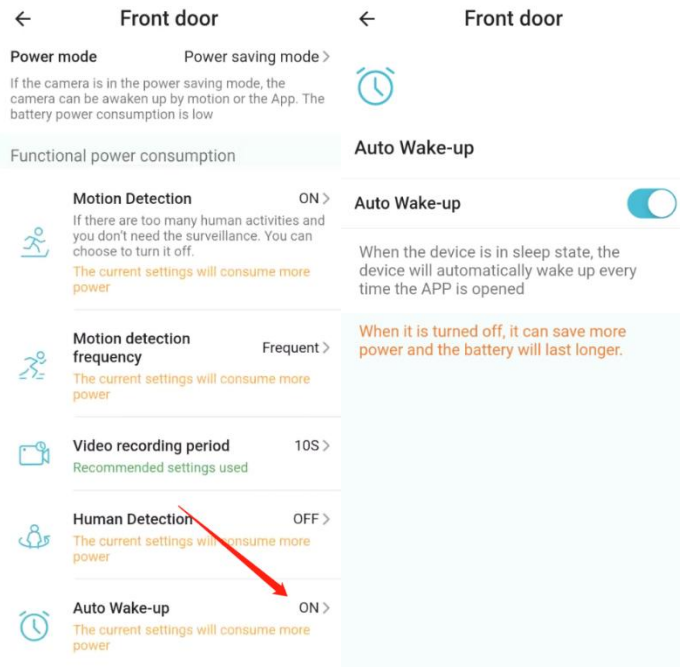
### 6.3.5. Setting up humanoid judgment



a. Clicking on Human Detection

b. Turn on and off the Human Detection and Human frame, when the judgment is turned on, the camera will only alarm when someone is present, which can reduce the power consumption of the camera.

### 6.3.6. Setting the device to wake up automatically

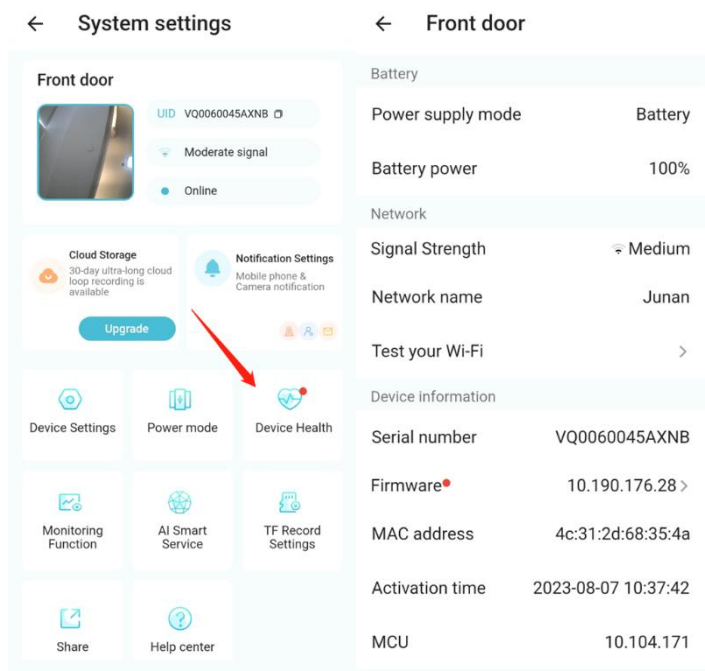


a. Click to wake up the device automatically

b. Turn on and off the automatic wake up device, turn on the device will automatically wake up every time you open the app, to be able to load the live broadcast faster!



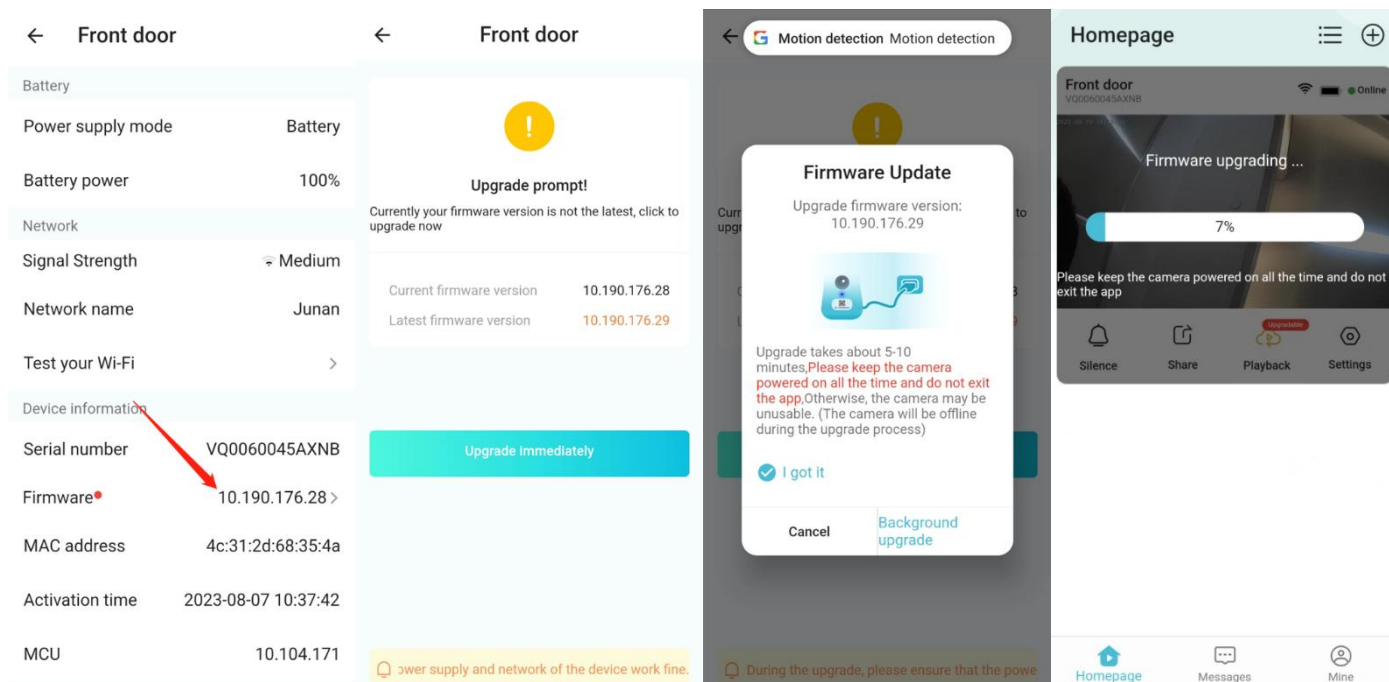
## 6.4. Device Health



a. Click on Device Health

b. Here you can check the battery level, connected WiFi name, firmware version, MAC address information

### 6.4.1. Update Firmware

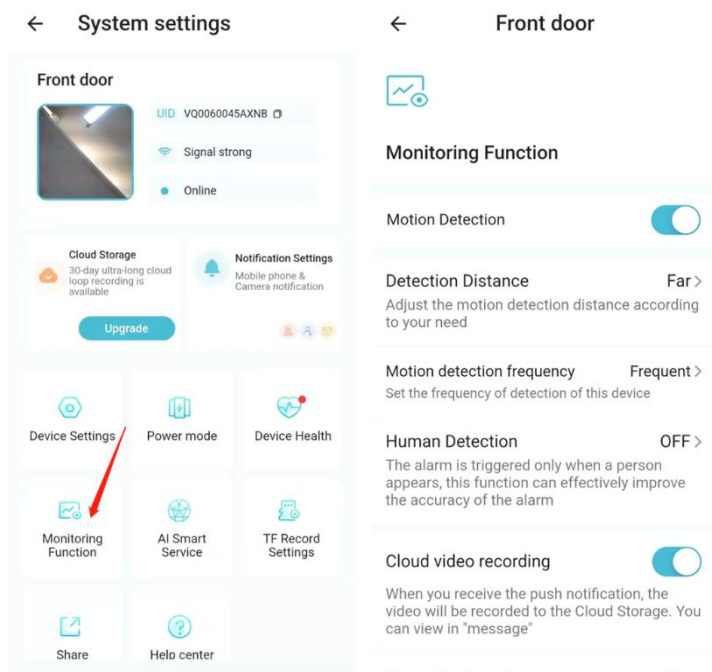


a. On the 'Device Health' page, click Firmware

b. Click Upgrade immediately

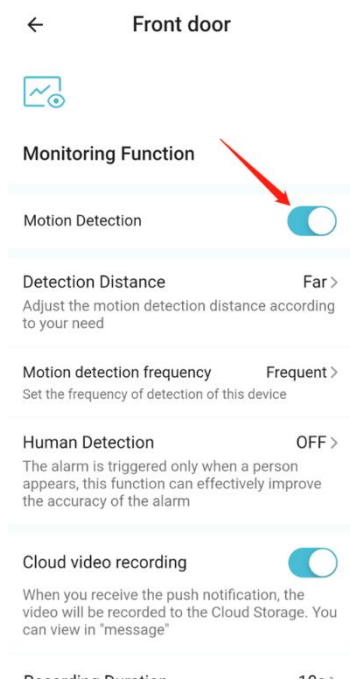
c. Please make sure the signal of the camera is above 85%, and wait for a moment to complete the upgrade.

## 6.5. Monitoring Function



a. Click Monitoring Function

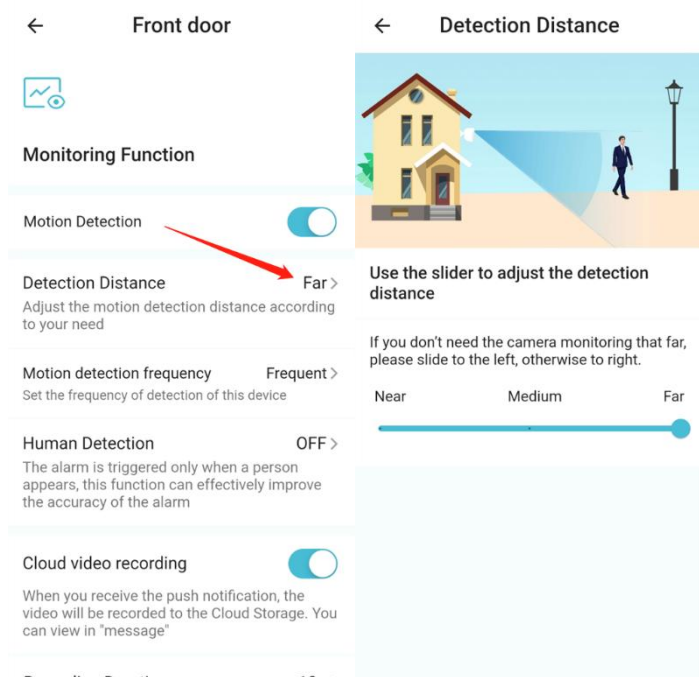
### 6.5.1. Turn motion detection on or off



a. Tap to turn on motion detection

b. Tap again to turn off motion detection

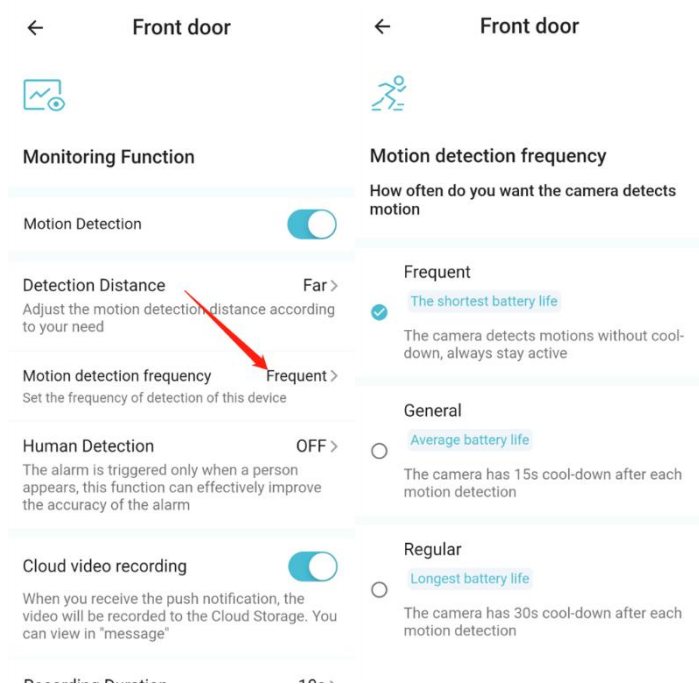
## 6.5.2. Setting the motion detection distance



a. Click the motion detection distance

b. Set the distance that the device detects motion, the farther the detection frequency is, the more sensitive the detection is, and the faster the camera consumes power.

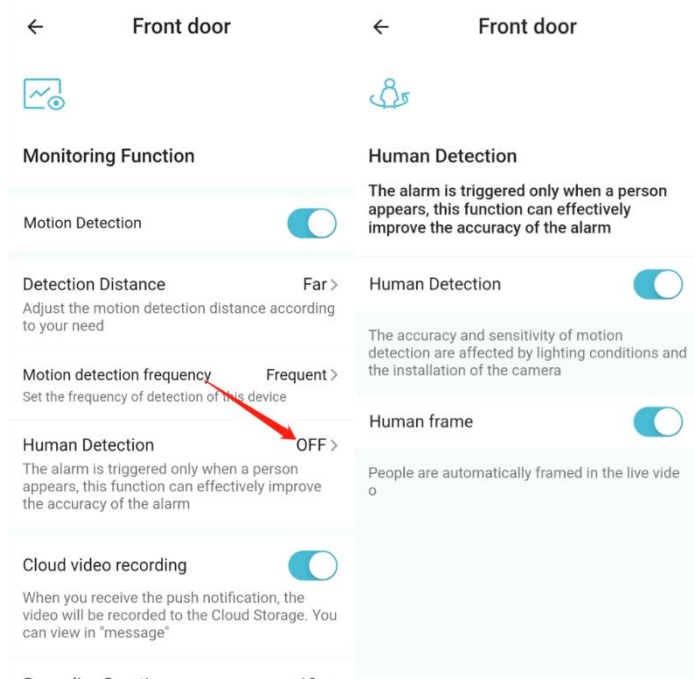
## 6.5.3. Setting the Motion Detection Frequency



a. Click Motion Detection Frequency

b. Set how often the device detects motion, the more frequent the detection frequency, the shorter the recording interval, and the faster the camera consumes power.

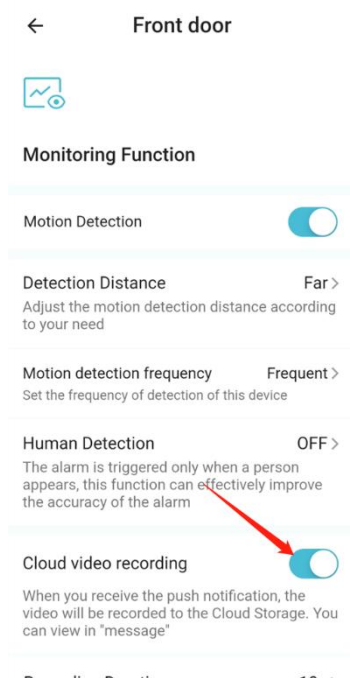
## 6.5.4. Setting up humanoid judgment



a. Clicking on Human Detection

b. Turn on and off the Human Detection and Human frame, when the judgment is turned on, the camera will only alarm when someone is present, which can reduce the power consumption of the camera.

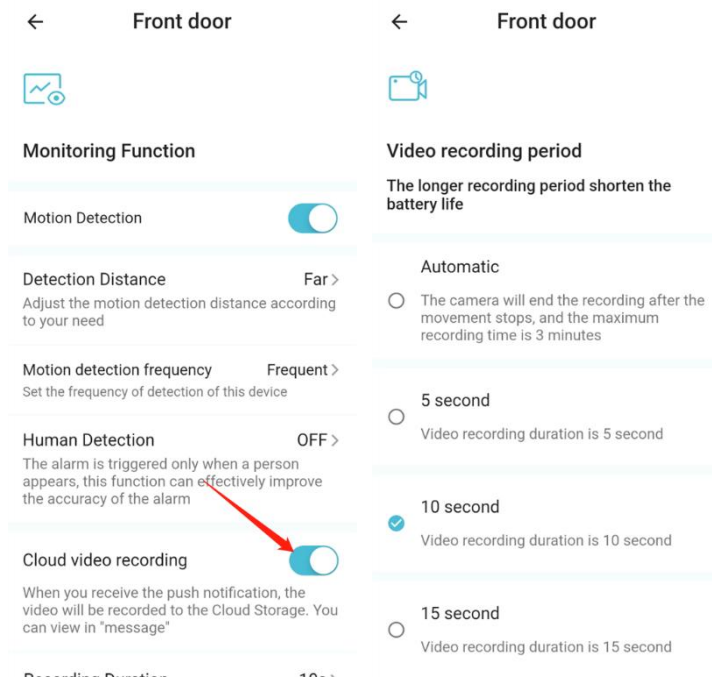
## 6.5.5. Enable cloud storage upload switch



a. Click to open cloud video recording

b. Click again to close cloud recording

## 6.5.6. Setting the video recording duration



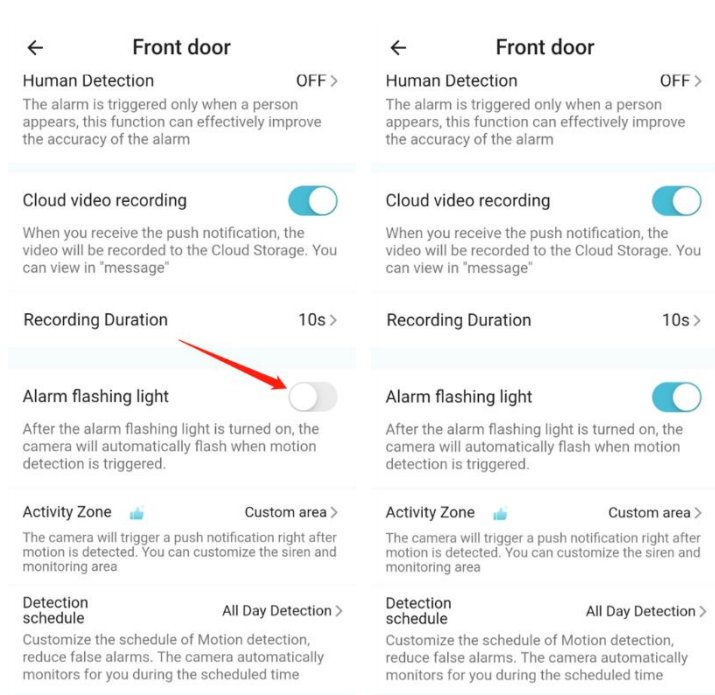
a. Click the video recording period

b. Select the desired recording length, the longer the recording time, the faster the camera consumes power.

c. Recording length level: Auto (max. 3min), 5s, 10s, 15s, 30s

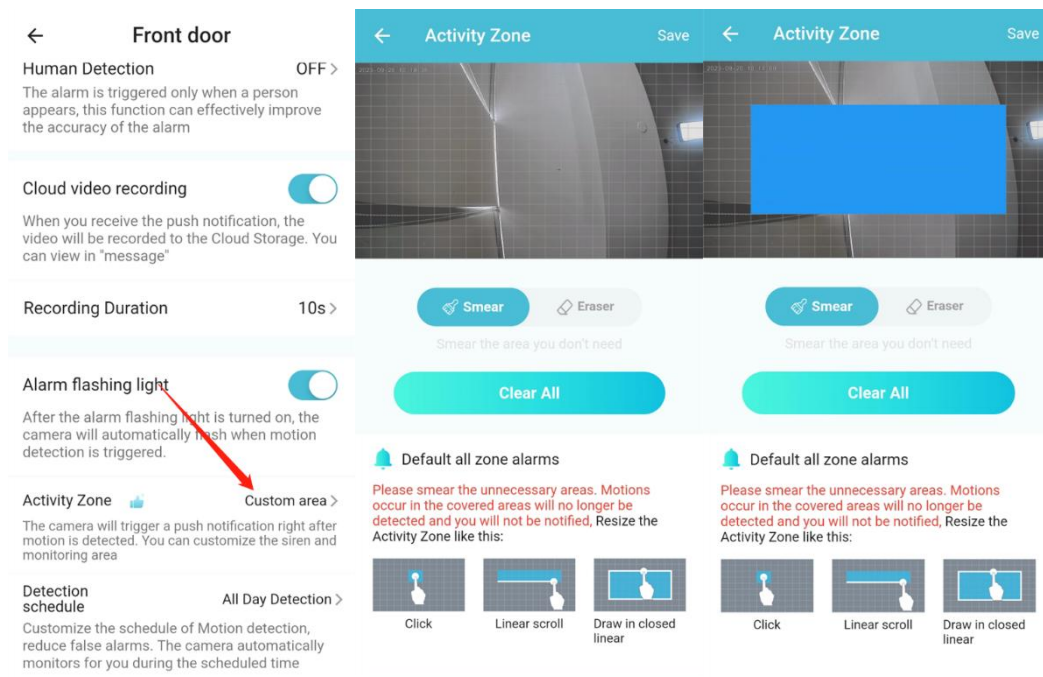
**Note:** These options are only displayed when the Cloud Storage switch is on, they can also be set in Power Consumption mode, see [6.3.4](#) for details.

## 6.5.7. Turn on the alarm flashers.



- Click to turn on the alarm flash
- Click again to turn off the alarm flashers

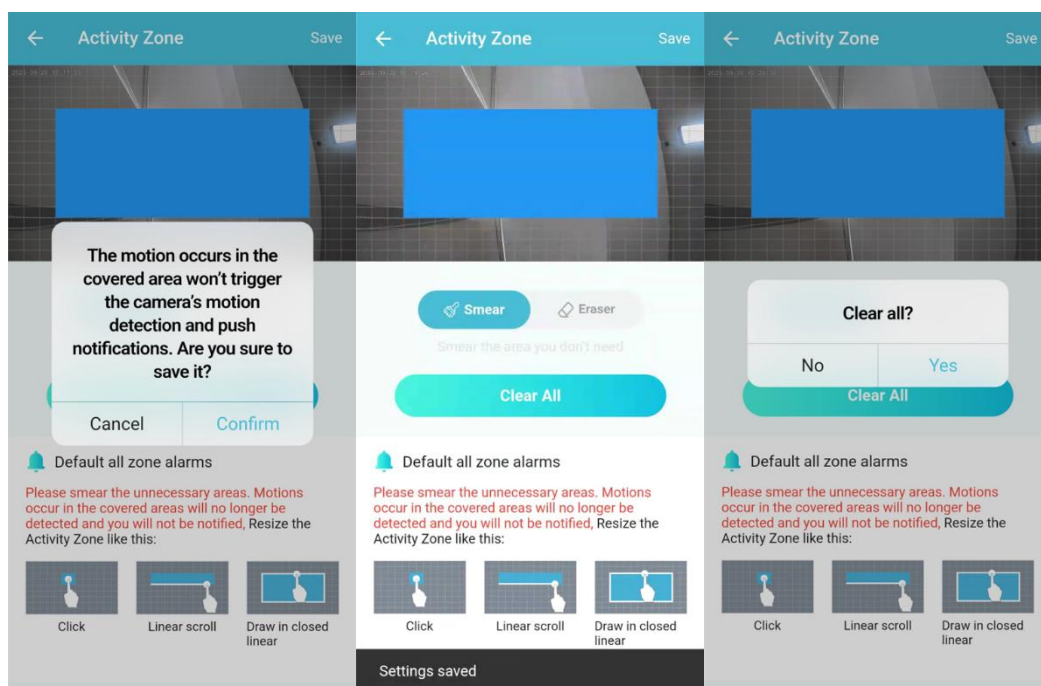
## 6.5.8. Setting the Activity



- Click on the detection area.
- Scribe the video screen to select the detection area.

c. Click on 'Eraser' to erase the drawn area.

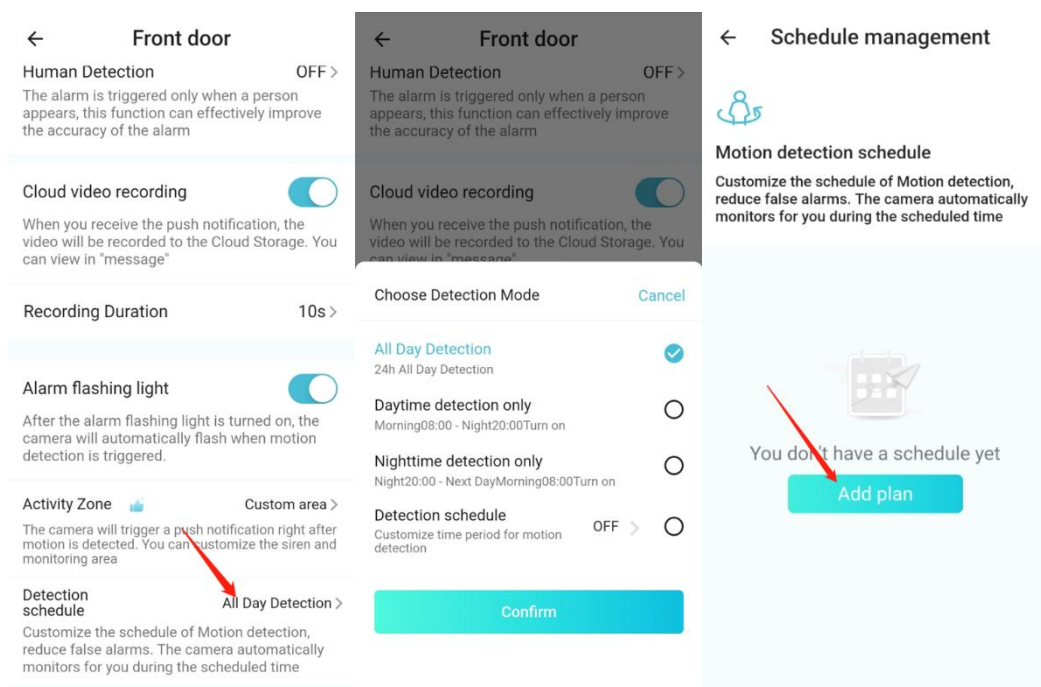
c. Click on 'Clear All' to clear the drawn area.



d. When you are done drawing remember to click 'Save' in the upper right corner to apply the settings.

Note: Areas where this setup applies settings will not be notified and recorded, areas that are not applied will be notified and recorded

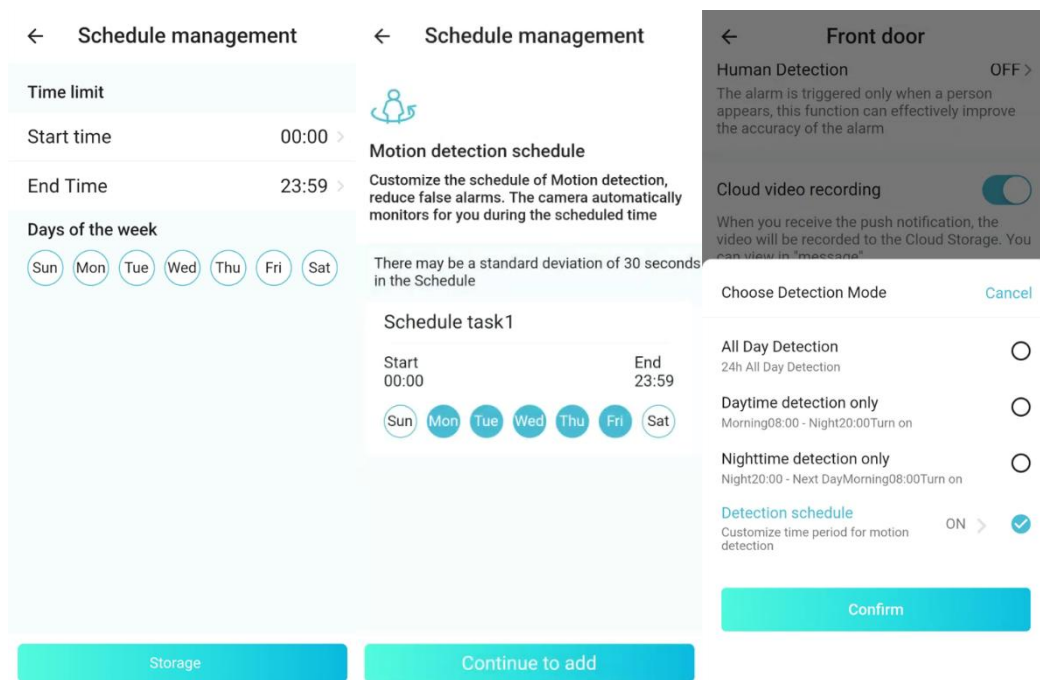
## 6.5.9. Setting the detection time period



a. Click the Detection schedule

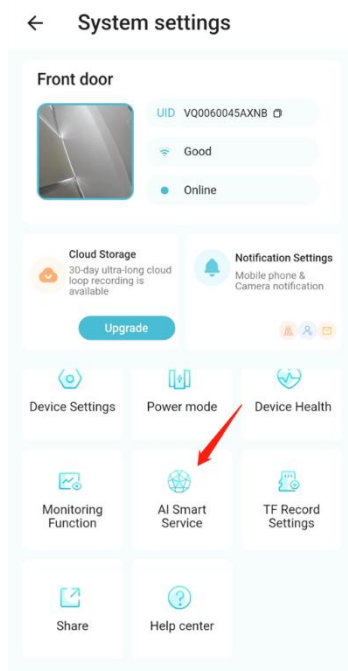
b. You can choose the preset detection time period (Daytime only or Nighttime only).

c. You can also set a custom Detection schedule.



d. Click Confirm after setting.

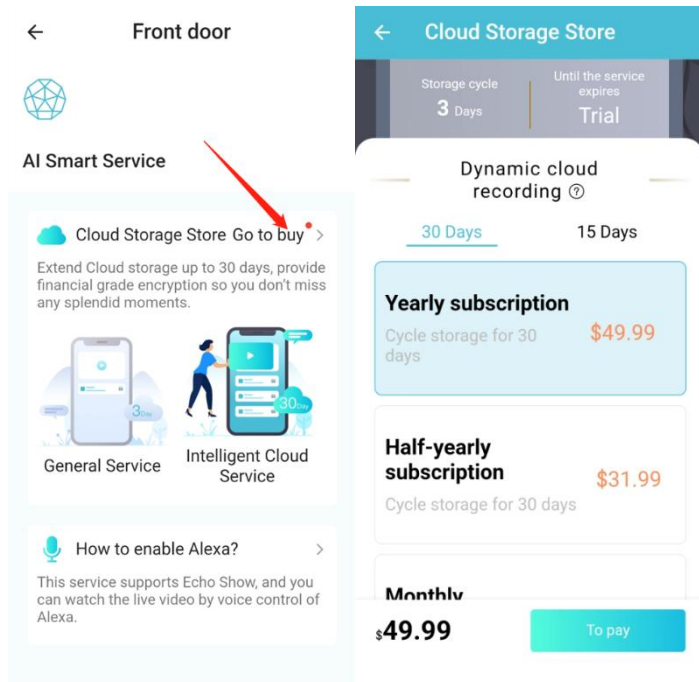
## 6.6. AI Smart Service



a. Click on AI Smart Service



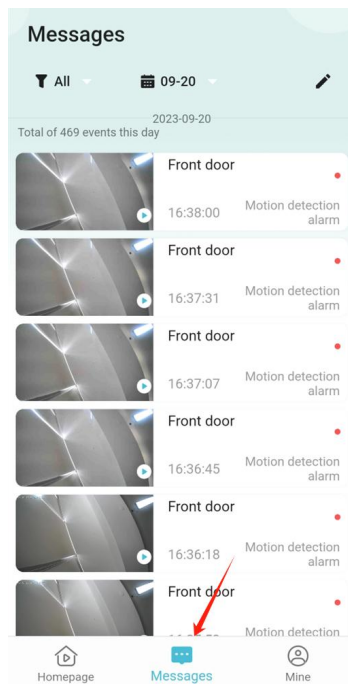
## 6.6.1. Buy Cloud Storage



a. Click the Storage Store Go to buy

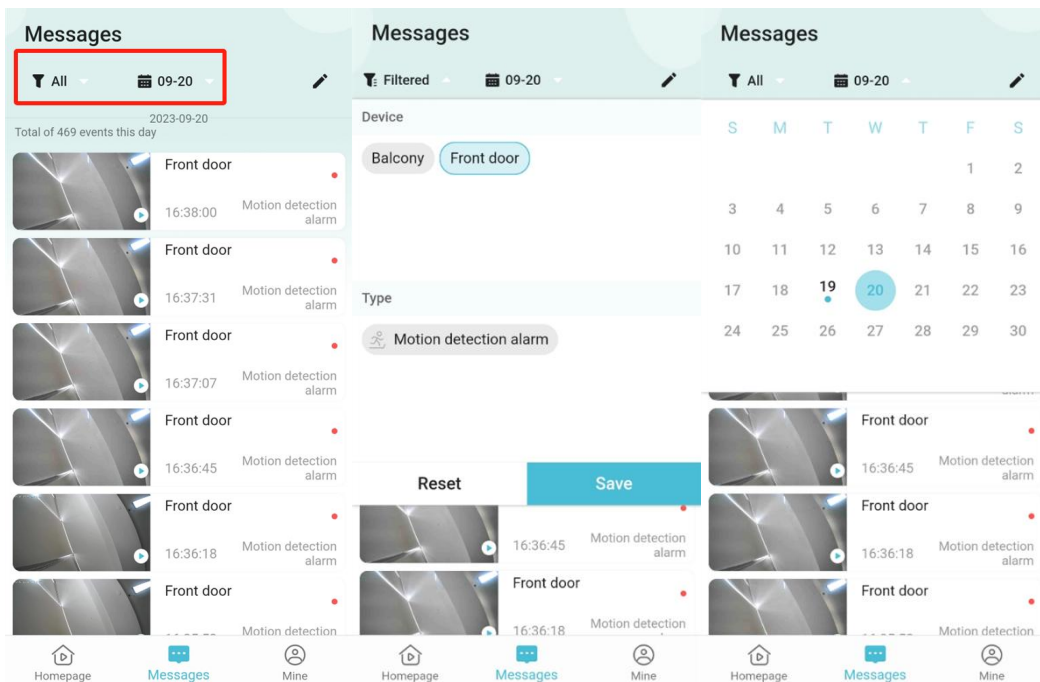
b. After selecting and paying for the appropriate package, you can open the cloud storage

## 7. Message



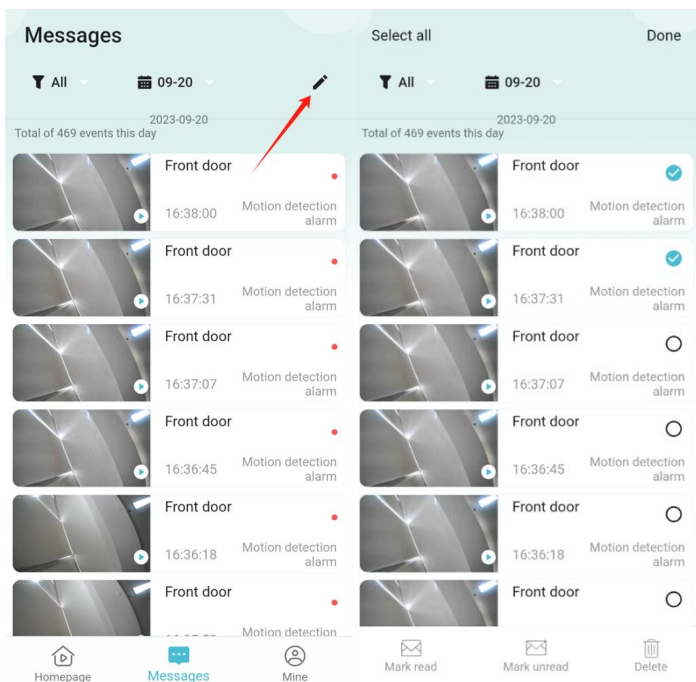
a. Click on Messages at the bottom of the main page to view messages

## 7.1. Filtering messages



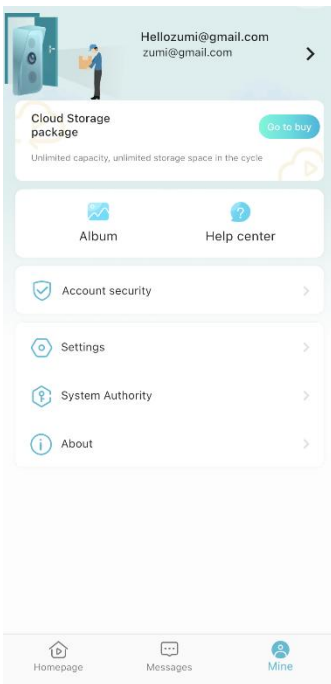
- Click on the filter icon on the top left to select the filter criteria
- Click on the date at the top to view messages from a particular date.

## 7.2. Delete Message



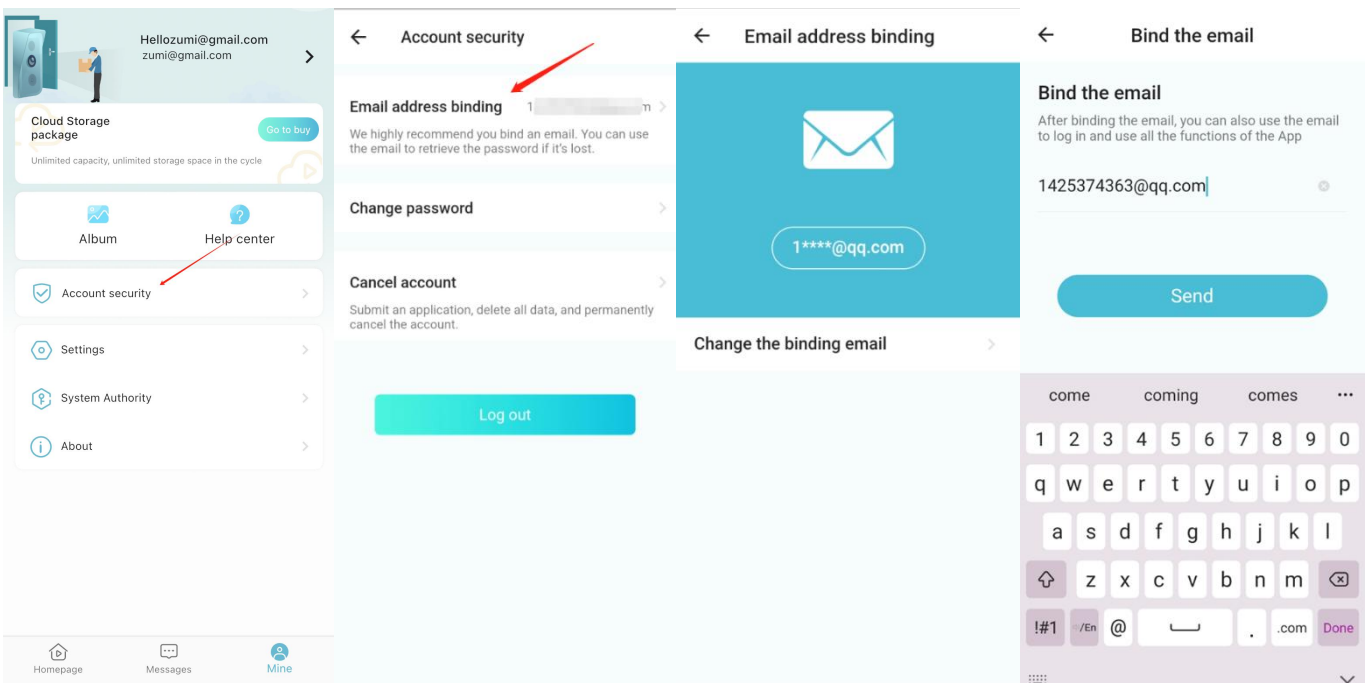
- Click the Edit icon on the top right to mark a message as read, mark it as unread, or delete it.

## 8. My Page



a. Click on 'My' in the lower navigation bar.

### 8.1. Email Address Binding and Switching



a. Click on 'My' in the lower navigation bar.

b. On the 'My' page, click on 'Account Security'.

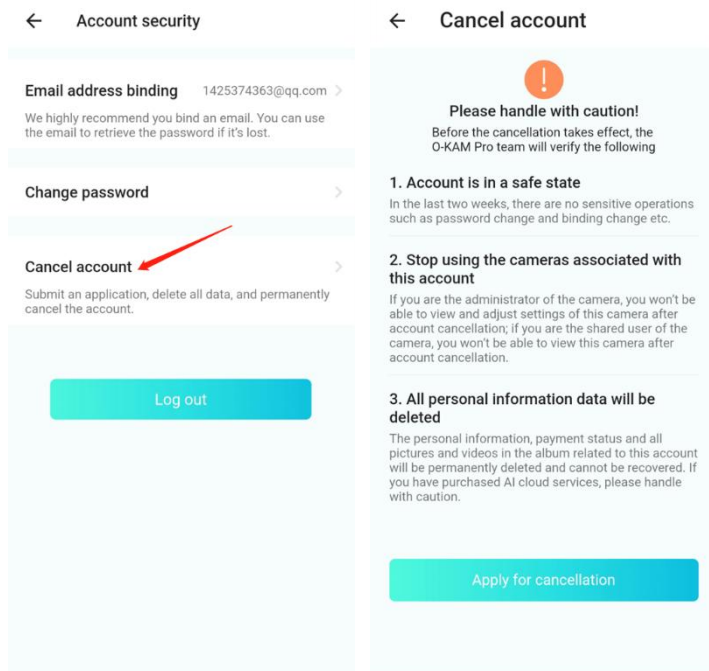
c. Click 'Email Address Binding'.

d. To change your email address, follow these steps: Click 'Change Binding Email Address'.

Enter the email address you wish to change and click send.

To authenticate your account, please log in to your email address and click the confirmation link provided in the email.

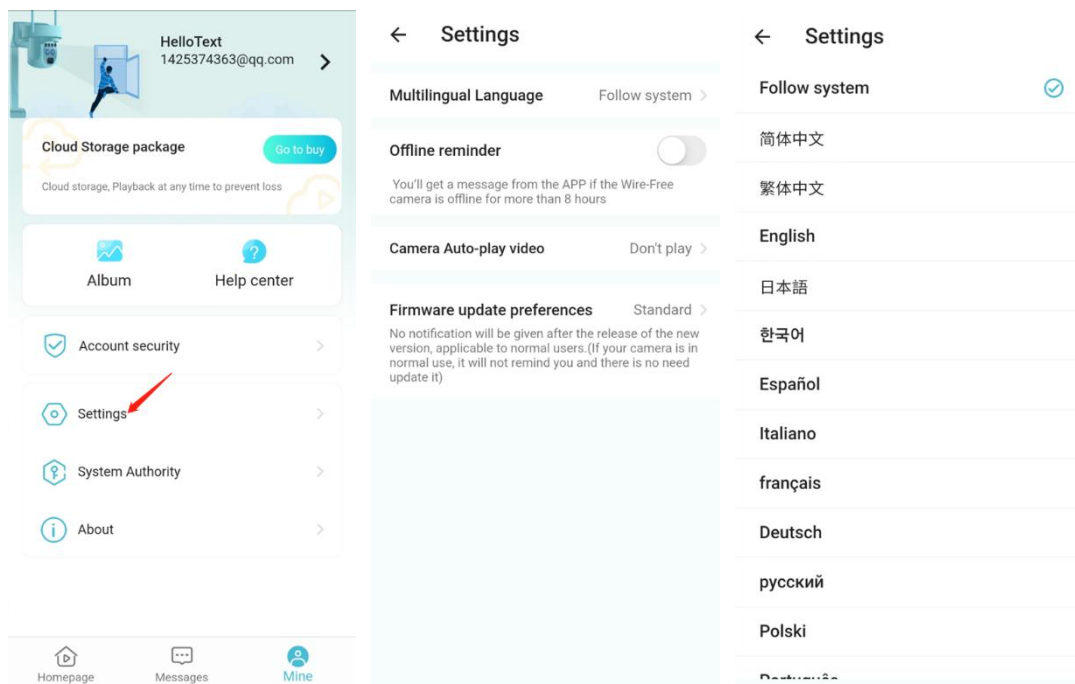
## 8.2. Cancel an account



a. Click Logout

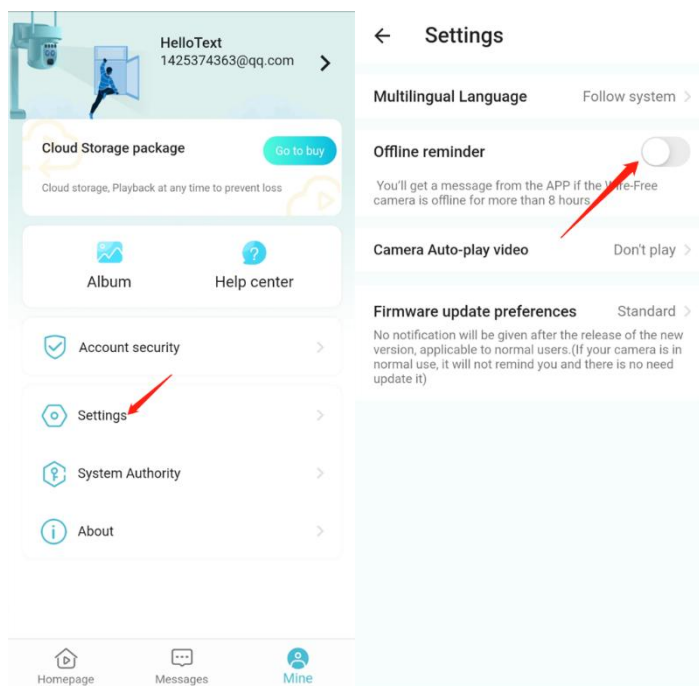
b. Read the logout instructions and click Request Logout

## 8.3. Setting the app language



- On the 'My' page, click Settings
- Click on Multi-language
- Select the desired language

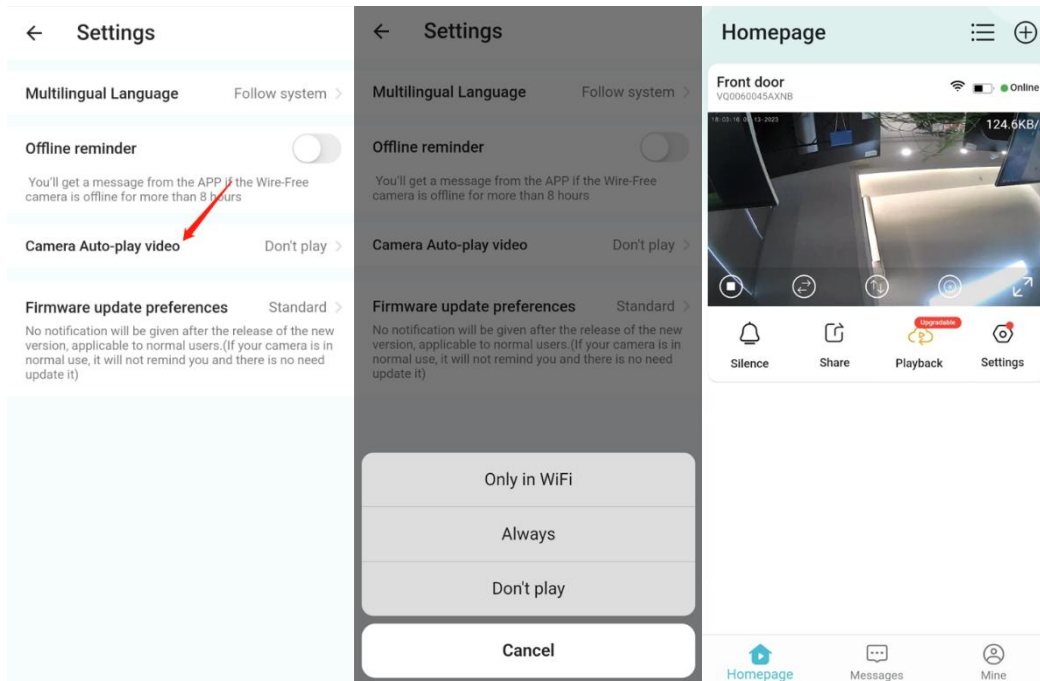
## 8.4. Setting up offline alerts



- Go to the Settings page and turn on the Offline Reminder switch.

b. Once this switch is turned on, the app will remind the user when the device has been offline for 8 hours.

## 8.5. Camera Auto-play video

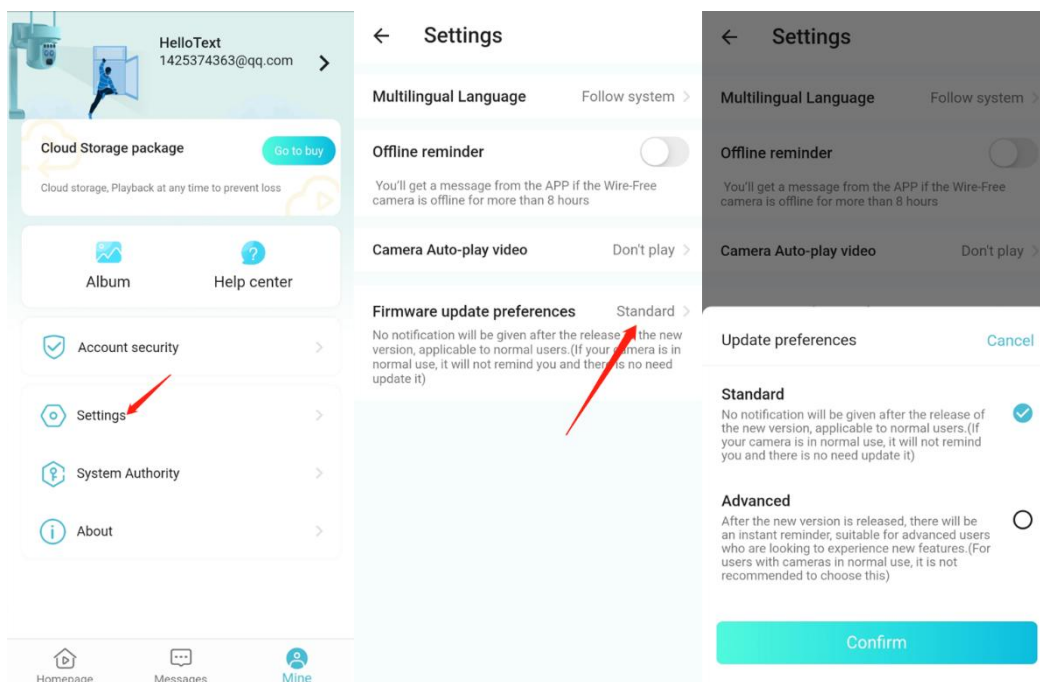


a. Go to 'My' - 'Settings' page, click the camera to play video automatically.

b. You can choose to play video Only in WiFi, Always, or Don't play.

c. Once turned on, entering the app will automatically play the camera live screen, but you need to switch the list display mode to big picture mode first, see [5.2.10](#) for more details

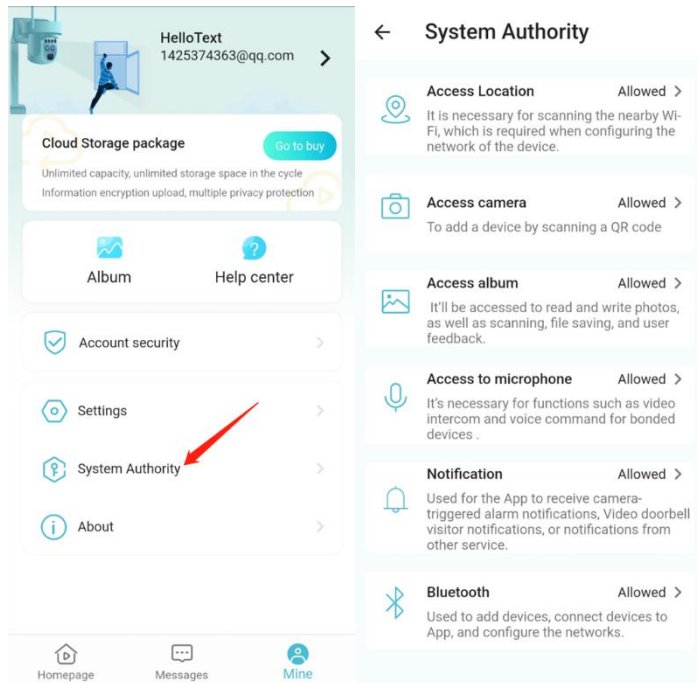
## 8.6. Setting firmware update preferences



a. Go to the 'My' - 'Settings' page and click on Firmware Update Preferences

b. Choose either Standard or Advanced, Standard for infrequent updates, Advanced for every update you receive.

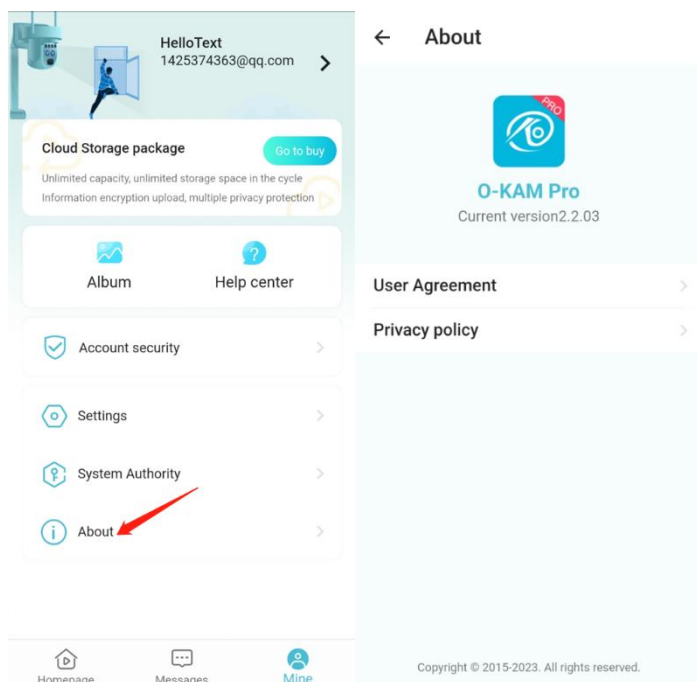
## 8.7. System Privilege Setting



a. Go to 'My' - 'Settings' page, click system permission settings.

b. Here you can check whether the system permissions required for running the app are enabled or not, if not, click the corresponding permissions to jump to the phone settings page.

## 8.8. View App Version



a. On the 'My' page, click About

b. View the app version and user agreement

---

**THE END**

**Thank you for reading.**