



Thank you for buying this Larsic product. Please read the manual carefully, taking special note of the warnings, before starting use.

Thank you

Warnings

- ! Do not put the cover on a hot surface - Heat resistant limited – Do not test**
- ! Do not cook on the cover**
- ! Do not turn the stove on when the cover is on it - Ensure the stove is off before covering it**
- ! Do not leave the iron on the cover – Do not use the cover as an iron rest station**
- ! Do not leave the iron on the cover for more than 5 seconds**
- ! Do not wash this cover with dishes or any kitchen utensils – Wash it separately**
- ! Keep all parts of the product away from kids and pets**
- ! Do not use this product or elements for other purposes**
- ! Reduce, Reuse, Recycle – Save the planet**

LARSIC

User Manual

Thank you for buying this Larsic product. Please read the manual carefully, taking special note of the warnings, before starting use.

Thank you

1. Be sure that surface is not hot
2. Clean the surface with a suitable substance and a rag
3. Slowly roll the cover on the surface, when logo on the top side, it prevents sliding
4. Put it in the middle, Make sure that cover is protecting all the surface

Finish Use & Storage

1. Take of the cover and put it on wall hooks – use all hangs (Protect wall while cooking)
2. Or simply fold the cover and put in place you are prefer

POWERFUL HOOKS



USAGE



Clean the surface



Peel off the cover

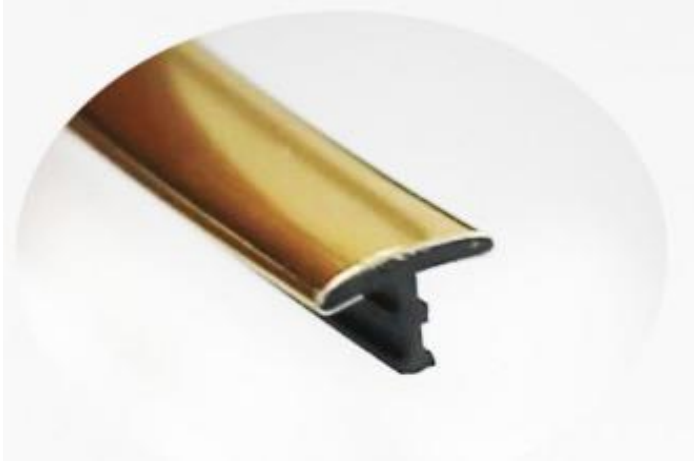


Press the basic of the hook to contact steady from middle to edge

Self Adhesive Hooks /Transparent Wall Hooks

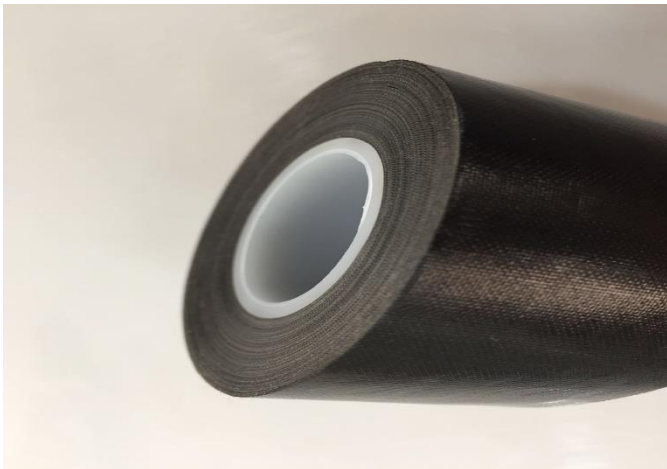
- Easy to use: the hook can be utilized repeatedly after cleaning and dry; No tools required, just peel off the cover to use and easy to re position without surface damage.
- Good quality: adhesive hook made of stainless steel and PVC material, can grasp the surface firmly and the steel hook can be move up and down, waterproof, nail free, oil proof.
- Note: Not recommended for poorly painted walls and walls that drops powders or peels away easily;
- Use on hard flat surface to lengthen their lifespan.

LARSIC[®]



Stove Gap

- Gold color stove/washer gap closing
 - With gap limits : 3-5 mm (0.11-0.20 Inch)
 - Simply lay this add in the gap
 - Not Heat Resistant less 50 C (122 F) Temperature
 - Easy Wash by wet rag (Water Only)
 - Can be covered by fiberglass fire resistant tape
-



Fiberglass Tape

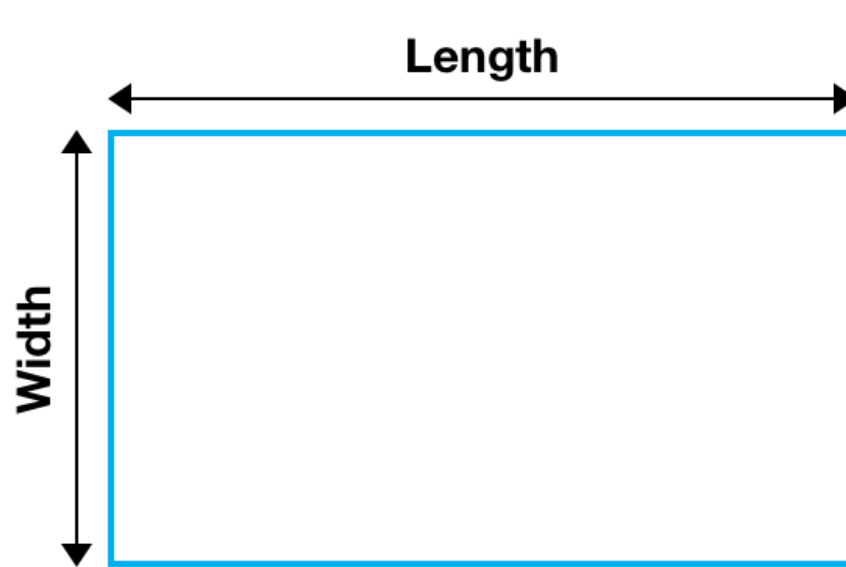
- Put this tape upon the gap start from upside
- Lay this tape carefully upon the gap
- When on downside stop and cut slow with scissors
- Tape size is 2 meter (78 inches) use it when needed
- The width of the tape is 5 cm (1.96 Inches)
- Fire flames resistant up to 300 C (572 F) (5 Seconds)

LARSIC[👑]

Measure Twice – Buy Once

Measure your Stove/Waher/Dryer surface before make an order

- 1. Take measuring tape and check size from left to right of the surface (length)**
- 2. Take measuring tape and check size from up to down of the surface (Width)**



Most Standards

Sample 38 or 36 or 31 or 28.5 or 24 inch

Choice the bigger size than measured
For example the length 37" width 21 choice
the 38*21" Size

*Add 0.5" to each size for extra cover

Sample 21 or 24 inch