



Werner Kern

FEEL THE DIFFERENCE





WERNER
KERN
Bridal

page
54



page
58



suny
by
ANNA KERN

page
46

Werner Kern
Ballerinas

page
62



ADDING DANCE TO LIFE

Dance embodies life – and life has many facets! Standard and Latin dances challenge the foot in different ways. From expansive to restrained, striding to spirited, dance shoes from Werner Kern Classic give the foot guidance and lightness. They offer support where it is needed and freedom where it is wanted.

The Werner Kern Classic collection comprises select materials, elegant aesthetics with contemporary fashion accents and the utmost in wearing comfort, for a proven combination. These dance shoes stand for trusted quality and superior comfort.

Our comfort models make dance a pleasure at any age, and some models have already gained a true cult following. Nappa leather as soft as gloves, supple kid suede, breathable leather linings and a fantastic array of fits to suit any foot make these models for ladies and gentlemen outstanding all-round dance shoes.

Carefully crafted by hand for you in Italy.



page 4



page 30



page 44



NEW IN

For everyone who loves sneakers!

Taylor LS

Nappa caramel/creme
Heel 1.5 cm



Taylor LS

Patent/Suede black
Heel 1.5 cm
(also available with
suede leather sole)



Taylor LS

Nappa black/white
Heel 1.5 cm
(also available with
suede leather sole)



Carol

Nappa white/silver/brocade
Micro Heel 1 cm
with removable footbed

NEW



Carol

Suede/patent black/brocade
Micro Heel 1 cm
with removable footbed

NEW



Taylor LS

Nappa barolo/creme
Heel 1.5 cm



LS Ledersohle
street-leathersole



Ultralight slip on suede sole boots with soft suede uppers, perfect for Line Dancing and West Coast Swing. Handmade in Italy.

Cocco

Suede black
Micro Heel 1.5 cm



Harper

Suede black
Micro Heel 1.5 cm



Harper

Suede marrone
Micro Heel 1.5 cm



Harper

Suede red
Micro Heel 1.5 cm





Flats 1.5 cm

Fanny

Nappa black
Micro Heel 1.5 cm



Taylor

Nappa black/white
Micro Heel 1.5 cm
(also available with
street sole)



Franca

Suede black
Micro Heel 1.5 cm



Fenja

Nappa black
Micro Heel 1.5 cm

NEW



Taylor

Patent/Suede black
Micro Heel 1.5 cm
(also available with
street sole)



Vega

Suede black
Micro Heel 1.5 cm





Heel 3.4 cm / comfort

NEW

Stine

Nappa black
Heel 3.4 cm
with removable footbed

comfort



Comfort models

comfort

Every individual's feet are unique. Our comfort footbed models offer dancers of all ages and those with especially discerning standards a secure hold and comfort while dancing. The anatomically formed joint support hugs the sole of the foot, providing stable support and comfort through a wider design.

Felice

Chevro antik
Heel 3.4 cm

comfort



Daniela

Suede black
Heel 3.4 cm
with elastic strap

comfort



NEW

Ronja

Suede black
Heel 3.4 cm

comfort



Felice

Nappa black
Heel 3.4 cm

comfort



Gala

Suede black
Heel 3.4 cm
(also available with 4.5 and 6 cm)

comfort



Cindy

Nappa black
Heel 3.4 cm

comfort



Felice

Nappa beige
Heel 3.4 cm

comfort



Alice

Quadrato black
Heel 3.4 cm

comfort



Heel 3.5 cm / comfort



Marina

Suede/Patent black
Heel 3.4 cm

comfort



Runa

Suede black
Heel 3.5 cm
with split sole

comfort



NEW

Olivia

Suede black
Heel 3.4 cm
(also available
with 6 cm)

comfort



Runa

Brocade 15
Heel 3.5 cm
with split sole

comfort



NEW

Kim

NEW

Chevro platin/Fantasia beige
Heel 3.5 cm

comfort



Vera

Nappa black
Heel 3.5 cm

comfort



Rikke

*Suede black/
Stella glitter black*
Heel 3.5 cm

comfort



Solveig

Nappa perl silver
Heel 3.5 cm

comfort



Freya

Nappa black
Heel 3.5 cm

comfort



Marion

Nappa black
Heel 3.5 cm

comfort



Sanna

Quadrato black
Heel 3.5 cm

comfort



Ilka

Nappa black
Heel 3.5 cm

comfort



Ines

Nappa black
Heel 3.5 cm

comfort



Heel 4.5 cm / comfort



Anke

Suede grey
Heel 4.5 cm
with removable footbed

comfort



Emma

Nappa black/white
Heel 4.5 cm

comfort



Gala

Suede black
Heel 4.5 cm
(also available
with 3.4 and 6 cm)

comfort



Naia

Nappa beige
Heel 4.5 cm

comfort



Emma

Nappa kaduna/creme
Heel 4.5 cm

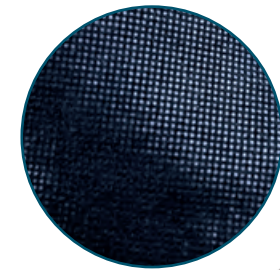
comfort



Jessie

Stella glitter blue
Heel 4.5 cm

comfort



Ashley

Suede black
Heel 4.5 cm
(also available
with 6 cm)

comfort



Debby

Nappa black
Heel 4.5 cm

comfort



Ruby

Suede black
Heel 4.5 cm
(also available
with 6 cm)

comfort



Tabea

Suede/Patent black
Heel 4.5 cm
with removable footbed

comfort



Gala

Chevro antik
Heel 4.5 cm

comfort



Gina

Nappa black
Heel 4.5 cm

comfort



Sidney

Nappa black
Heel 4.5 cm

comfort



Olivia

Nappa black
Heel 4.5 cm

comfort



Lea

Suede black
Heel 4.5 cm

comfort



Heel 5 cm / comfort

Laura

Shark antik
Heel 5 cm
with elastic insert

comfort



Laura

Nappa black
Heel 5 cm
with elastic insert

comfort




Werner Kern

Heel 6 cm / comfort

Gala

Suede black
Heel 6 cm
(also available
with 3.4 and 4.5 cm)

comfort



Olivia

Suede black
Heel 6 cm
(also available
with 3.4 cm)

comfort



Ashley

Suede black
Heel 6 cm
(also available
with 4.5 cm)

comfort



Tamara

Suede grey
Heel 6 cm

comfort



Layla

Nappa black
Heel 6 cm

comfort



Kyra

Nappa black
Heel 6 cm

comfort



Merle

Suede black
Heel 6 cm

comfort



Heel 4.5 cm / comfort

Ruby

Suede black
Heel 6 cm
(also available
with 4.5 cm)

comfort



Bess

Suede black/Chevro antik
Heel 4.5 cm

comfort

NEW



Holly

Stella/Suede black
Heel 4.5 cm

comfort

NEW



Gilian

Nappa black
Heel 6 cm

comfort



Coleen

Chevro platin/Fantasia beige
Heel 4.5 cm

comfort

NEW

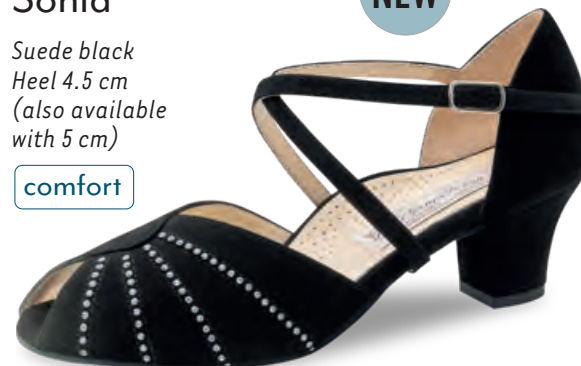


Sonia

Suede black
Heel 4.5 cm
(also available
with 5 cm)

comfort

NEW





Heel 5 cm / comfort

Ebony

Stella glitter blue
Heel 5 cm

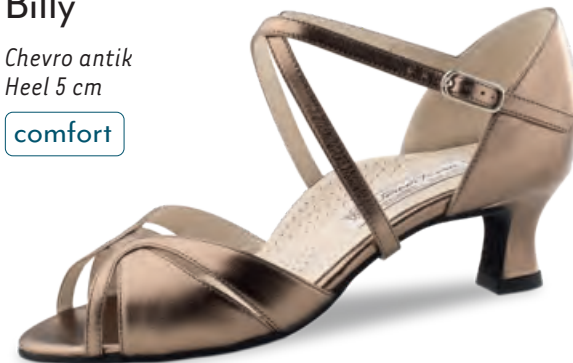
comfort



Billy

Chevro antik
Heel 5 cm

comfort



Ruth

Nappa black
Heel 5 cm

comfort



Ruth

Nappa beige
Heel 5 cm

comfort



Gaby

Suede black/Chevro antik
Heel 5 cm

comfort



Sonia

Suede black
Heel 5 cm
(also available
with 4.5 cm)

comfort



Smilla

Nappa perl nude
Heel 5 cm

comfort



Fatima

Suede black
Heel 5 cm
(also available
with 6 cm)

comfort



Murielle

Suede black
Heel 5 cm

comfort



Ilona

Suede black
Heel 5 cm

comfort



Heel 6 cm / comfort

Georgia

Suede black
Heel 6 cm

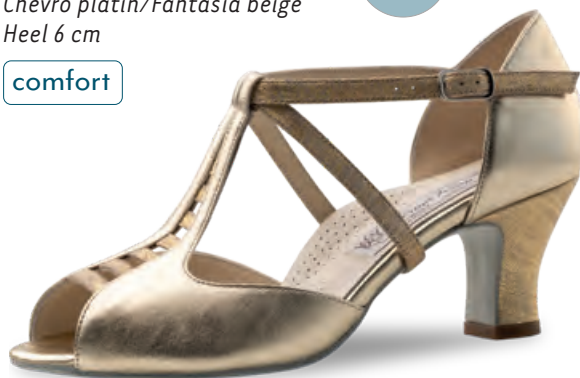
comfort



Holly

Chevro platin/Fantasia beige
Heel 6 cm

comfort



Lindsay

Nappa red
Heel 6 cm

comfort



Paulette

Nappa perl nude
Heel 6 cm

comfort



Fatima

Suede black
Heel 6 cm
(also available
with 5 cm)

comfort



Ginny

Brocade black-silver/
Patent black
Heel 6 cm

comfort





Heel 5.5 cm

Francis

Nappa perl silver
Heel 5.5 cm



Swantje

Suede black/
Chevro antik
Heel 5.5 cm



Tiziana

Chevro silver
Heel 5.5 cm



Astrid

Nappa perl nude
Heel 5.5 cm



Asta

Suede black
Heel 5.5 cm
(also available
with 6.5 cm)



Claudia

Suede black
Heel 5.5 cm
(also available
with 6.5 cm)



Eva

Suede black
Heel 5,5 cm
also available
for narrow feet



Mary

Chevro silver
Heel 5.5 cm



Francis

Suede black
Heel 5.5 cm
(also available
with 6.5 cm)



Holly

Suede blue/
Chevro silver
Heel 5.5 cm



Niki

Suede black
Heel 5.5 cm
for narrow feet



narrow

Holly

Suede black/
Chevro antik
Heel 5.5 cm



Dora

Nappa perl nude
Heel 5.5 cm
for narrow feet



narrow



Heel 6.5 cm

Avery

Stella glitter black
Heel 6.5 cm



Holly

Nappa beige/black
Heel 6.5 cm



Tilla

Stella glitter black
Heel 6.5 cm



July

Nappa black
Heel 6.5 cm
(also available
with 8 cm)



Holly

Brocade black-silver/
Patent black
Heel 6.5 cm



Asta

Suede black
Heel 6.5 cm
(also available
with 5.5 cm)



Asta

Shark antik
Heel 6.5 cm



Claudia

Suede black
Heel 6.5 cm
(also available
with 5.5 cm)



Mary

*Chevro platin/
Fantasia beige
Heel 6.5 cm*



Dalia

*Suede black
Heel 6.5 cm*



Francis

*Suede black
Heel 6.5 cm
(also available
with 5.5 cm)*



Astrid

*Nappa/Suede black
Heel 6.5 cm*



Astrid

*Nappa perl silver
Heel 6.5 cm*



Eva

*Chevro silver
Heel 6.5 cm*



Eva

*Suede black/
Chevro antik
Heel 6.5 cm*



Eva

*Nappa perl nude
Heel 6.5 cm*



NEW

Lindsay

Stella glitter blue
Heel 6.5 cm



NEW

Mary

Chevro fuchsia/multi
Heel 6.5 cm



July

Brocade silver multi
Heel 6.5 cm



Jamie

Brocade black/silver
Heel 6.5 cm
with silver
metallic heel



Ida

*Stella glitter/
Suede black*
Heel 6.5 cm
for narrow feet

narrow



Amy

Nappa perl nude
Heel 6.5 cm
for narrow feet

narrow



Irina

Suede black
Heel 6.5 cm
for narrow feet

narrow



July

Chevro antik
Heel 6.5 cm



Elsa

Suede black
Heel 6.5 cm
with elastic strap



Liz

Chevro antik
Heel 6.5 cm



Heel 8 cm

even higher?

Asta

Nappa black
Heel 8 cm



July

Nappa black
Heel 8 cm
(also available
with 6.5 cm)



Alina

Glitter multi
Heel 8 cm



Heel 5.5 cm

Patty

Chevro antik
Heel 5.5 cm



Patty

Nappa black
Heel 5.5 cm
(also available
with 6.5 and 8 cm)



Betty

Nappa black
Heel 5.5 cm
(also available
with 6.5 cm)



Patty

Quadrato black
Heel 5.5 cm



Patty

Nappa red
Heel 5.5 cm



Linda

Nappa black
Heel 5.5 cm
(also available
with 6.5 cm)



Shirley

Nappa black
Heel 5.5 cm



Celine

Nappa black
Heel 5.5 cm



Pippa

Suede black/
Chevro antik
Heel 5.5 cm



NEW

Heel 6.5 cm

Rita

Nappa black
Heel 5.5 cm
(also available
with 6.5 cm)



Ines

Nappa red
Heel 6.5 cm



Fabiola

Nappa black
Heel 6.5 cm
for narrow feet

narrow



Ines

Nappa black
Heel 5.5 cm
(also available
with 6.5 cm)



Ines

Nappa black
Heel 6.5 cm
(also available
with 5.5 cm)



Abby

Brocade black-silver
Heel 6.4 cm
with silver metallic heel



Melodie

Suede black
Heel 6.4 cm
with silver metallic heel



Sarah

Suede black
Heel 6.4 cm
with silver metallic heel



Betty

Nappa black
Heel 6.5 cm
(also available
with 5.5 cm)



Betty

Chevro antik
Heel 6.5 cm



Betty

Brocade 15
Heel 6.5 cm



Linda

Chevro silver
Heel 6.5 cm



Linda

Nappa black
Heel 6.5 cm
(also available
with 5.5 cm)



Rita

Nappa black/ Patent black
Heel 6.5 cm
(also available
with 5.5 cm)



Betty

Brocade silver multi
Heel 6.5 cm



Rita

Satin flesh
Heel 6.5 cm



Andrea

Nappa black
Heel 6.5 cm



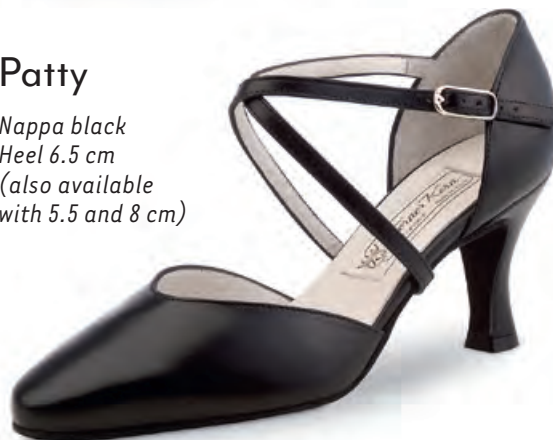
Laura

Satin flesh
Heel 6.5 cm
with elastic insert



Patty

Nappa black
Heel 6.5 cm
(also available
with 5.5 and 8 cm)



Heel 8 cm

Patty

Nappa black
Heel 8 cm
(also available
with 5.5 and 6.5 cm)





SEDUCTION FOR THE FEET

Argentine tango is passion brought to life through dance. The rhythm of the music sparks intense communication between dance partners: every movement a statement. Extravagant and supple – the ideal shoe is as elegant as the dance itself.

It provides support where necessary and offers freedom for boundless, spirited expression when the dance and the partners demand it. The models in the Nueva Epoca collection reflect the joy of Italian design with exquisite details and striking colours with assertive lines.

The trendsetters in the Nueva Epoca collection are made by hand in Italy, using traditional methods. Painstakingly selected materials include kid leather as soft as gloves, breathable leather linings, a flexible latex midsole and shock-absorbing heel, all providing an incomparable feel both during wearing and dancing. The high-quality suede sole allows for easy, controllable turns and gliding on the dance floor. It's a new era in dance – in more than just looks!



Heel 6 cm / slim

India

Satin white
Heel 6 cm



Mable

Satin white
Heel 6 cm



Karen

Suede/Patent black
Heel 6 cm



Joy

Suede black
Heel 6 cm
for narrow feet



narrow



Paris

Satin white
Heel 6 cm



Rose

Chevro/Brocade platin
Heel 6 cm



Alexia

Suede grey/Patent black
Heel 6 cm



Rosita

Suede blue/Patent black
Heel 6 cm



Vicky

Suede black/red
Heel 6 cm



Sierra

Chevro platin
Heel 6 cm



Heel 7 cm / slim

Violeta

Chevro/Petrol prugna
Heel 7 cm

NEW



Marissa

Suede red
Heel 6 cm



Caia

Chevro silver
Heel 7 cm

NEW



Martinee

Chevro/Cielo fuchsia
Heel 7 cm

NEW



Berenice

Stella glitter beige
Heel 7 cm

NEW



Sylvie

Stella glitter black
Heel 7 cm

NEW



Cleo

Chevro platin
Heel 7 cm

NEW



Ornella

Stella glitter beige
Heel 7 cm



Linea

Suede red
Heel 7 cm



Maxima

Suede indigo/Ariel black
Heel 7 cm



Riana

Suede black
Heel 7 cm
with silver
metallic heel



Yolanda

Chevro silver
Heel 7 cm





Cosima

*Suede red/
Ariel black
Heel 7 cm*



Reyna

*Suede indigo
Heel 7 cm*



Gracia

*Suede blue
Heel 7 cm*



Sienna

*Suede/Ariel black
Heel 7 cm*



Pearl

*Chevro silver/
Brocade platin
Heel 7 cm*



Lydia

Suede grey/Ariel black
Heel 7 cm



Valeria

Stella glitter beige
Heel 7 cm



Tessa

Suede hazel/Chevro copper
Heel 7 cm



Christina

Suede/Ariel black
Heel 7 cm



Paloma

Nappa white/Patent black
Heel 7 cm



Heel 8 cm / slim

Camelia

Chevro/Petrol prugna
Heel 8 cm

NEW



Jacinta

Suede black
Heel 8 cm
with gold metallic heel

NEW



NUEVA
EPOCA

Martha

Suede black
Heel 8 cm



Filia

Suede fuchsia
Heel 8 cm



April

Suede/Ariel black
Heel 8 cm



Shakira

*Suede/Ariel black
Heel 8 cm*



Jaida

*Suede black
Heel 8 cm*



Donna

*Suede blue/Brocade black multi
Heel 8 cm*



Helen

*Suede hazel/Chevro copper
Heel 8 cm*



Talia

*Suede black/Patent red
Heel 8 cm*





Amalia
Suede black
Heel 8 cm



Serena
Suede black
Heel 8 cm



Angeles
Chevro/Print capri blue
Heel 8 cm



Flavia
Suede red
Heel 8 cm
with gold metallic heel



Gloria

Chevro/Brocade platin
Heel 8 cm



Saskia

*Chevro copper/
Print Leo*
Heel 8 cm



Paola

Suede indigo/Ariel black
Heel 8 cm



Lupe

Patent black
Heel 8 cm



Adora

Patent red
Heel 8 cm



Penelope

Chevro/Nappa print olive
Heel 8 cm



Josefina

Suede grey/Ariel black
Heel 8 cm



Heel 9 cm / slim

Corazon

Suede viola
Heel 8 cm



Simona

Suede viola
Heel 8 cm



Nora

Suede/Patent black
Heel 9 cm



ALL YOU

Freedom's just
another word
for nothing
left to lose

TH

JANIS JOPLIN



ENCHANTINGLY VIBRANT

When the curtain goes down on the daily routine, life behind the scenes starts. This is where the body, rhythm and music come together as one to form a vibrant presence.

Salsa and bachata invigorate the body, halting the whirl of thoughts – welcome to the moment! Demanding rhythms, firm posture and mobility, and now your foot needs a dance partner that attracts the eye not just with a perfect fit and secure hold, but also with unconventional and provocative design.

ANNA KERN

Designed in Italy

Anna Kern shoes are the modern-day princesses among ladies dance shoes. Their youthful, progressive design is striking: glittering brocades, gold and silver, and a lovely narrow heel offer a fresh take on the idea of the dance shoe. Leather uppers and linings are joined through superior craftsmanship to form a shoe that represents the perfect marriage of the joy of movement and vitality expressed by Latin dance and a generous dash of glamour.



140 - pureflex for women (sizes 3 ½ - 8)
Nappa/Canvas white
with split PU sole



145 - pureflex for women (sizes 3 ½ - 8)
Nappa/Velour black
with split PU sole,
with inserted suede leather sole



150 - pureflex for women (sizes 3 ½ - 8)
Knit grey/black
with split PU sole

NEW



110 - pureflex for women (sizes 3 ½ - 8)
Knit black/grey/white
with split PU sole



115 - pureflex for women (sizes 3 ½ - 8)
Knit black/grey/red/white
with split PU sole



155 - pureflex for women (sizes 3 ½ - 8)
Suede black
with split PU sole

NEW



130 - pureflex for women (sizes 3 ½ - 8)
Knit blue/black
with split PU sole



135 - pureflex for women (sizes 3 ½ - 8)
Knit red/black
with split PU sole



120 - pureflex for women (sizes 3 ½ - 8)
Knit black
with split PU sole



THE EMBODIMENT OF PERFECTION

Precise steps, concentrated bodies, smooth, practiced repetitions. And with it all, a lightweight, comfortable shoe that can keep up with you during all your training needs. Down-to-earth, sporty, focused on the essentials – that's the simple SUNY dance sneaker by Anna Kern, available for both [women](#) and [men](#).



As a second shoe for training, it wins points for its sporty design, casual look and unpretentious air.

Made of lightweight, breathable mesh material,

it hugs the foot comfortably for a perfect fit.

Its PU sole has two parts (split-sole) for superior

flexibility and a flat heel, so controlled turns during training are a breeze. Men and women can wear the same casual models while still benefiting from an individual feminine or masculine fit.

SUNY by Anna Kern is the modern dance sneaker that adds a sporty twist to any training session, from salsa to kizomba and from bachata to rueda.

also available in half sizes



Heel 3 cm

Babette

559 - 30
Suede black
Heel 3 cm



Heel 3.5 cm

Sabrina

530 - 35
Suede black
Heel 3.5 cm



Monique

973 - 35
Satin flesh
Heel 3.5 cm



Gabrielle

520 - 35
Satin bronze
Heel 3.5 cm



Fabienne

599 - 35
Nappa silver
Heel 3.5 cm



Heel 5 cm

Denise

572 - 50
Suede black
Heel 5 cm



Magalie

908 - 50
Nappa silver
Heel 5 cm



Meline

580 - 50
 Nappa gold
 Heel 5 cm



Lucile

540 - 50
 Satin bronze
 Heel 5 cm



Aliette

620 - 50
 Sparkle gold
 Heel 5 cm



Clemence

960-50
 Suede black
 Heel 5 cm



Thea

893-50
 Suede black
 Heel 5 cm



Noel

874-50
 Nappa gold/silver
 Heel 5 cm



Heel 6 cm

Adele

740 - 60
Nappa gold
Heel 6 cm



Lisette

750 - 60
Sparkle gold
Heel 6 cm



Adele

740 - 60
Nappa gold
Heel 6 cm



Jolie

598 - 60
Nappa gold
Heel 6 cm



Adline

569 - 60
Suede black
Heel 6 cm



Adele

740 - 60
Nappa silver
Heel 6 cm



Odile

672 - 60
Suede black
Heel 6 cm



Justine

470 - 60
Satin flesh
Heel 6 cm



Delphine

780 - 60
Sparkle black-silver
Heel 6 cm



Dorette

700 - 60
Satin bronze
Heel 6 cm



Manon

640 - 60
Satin bronze
Heel 6 cm



Blanche

526 - 60
Satin bronze
Heel 6 cm



Manon

640 - 60
Satin black
Heel 6 cm



Ninon

875-60
Nappa silver/gold
Heel 6 cm



NEW

Solange

769-60
Nappa antik
Heel 6 cm



NEW

ANNA KERN
Designed in Italy

Heel 7.5 cm

Regine

981-75
Suede black
Heel 7.5 cm
with zipper
in the back

NEW



Celeste

800 - 75
Suede beige
with zipper
in the back
Heel 7.5 cm



Mignon

845 - 75
Suede/Sparkle black
with zipper
in the back
Heel 7.5 cm



Vivian

835 - 75
Suede black
with zipper
in the back
Heel 7.5 cm



Elodie

870 - 75
Nappa silver
Heel 7.5 cm



Elodie

870 - 75
Sparkle gold
Heel 7.5 cm



Heel 8 cm

ANNA KERN

Designed in Italy

Giselle

910 - 80
Suede black/ Nappa
antik
Heel 8 cm



Fleur

830 - 80
Suede black
with zipper
in the back
Heel 8 cm



Desiree

950 - 80
Nappa silver
Heel 8 cm



Ivette

930 - 80
Suede black
Heel 8 cm



Desiree

950 - 80
Nappa gold
Heel 8 cm





IN LOVE WITH A SHOE

Who says bridal shoes have to be uncomfortable? Werner Kern Bridal offers a wide range of feminine options to choose from so the bride can glide through the happiest day of her life like walking on clouds. As dance shoes, they combine superior fit and comfort with Italian design. Soft satin hugs the foot, while a breathable lining cools and the heel cushions every step. With these features, you can glide with relaxed feet from the altar to the dance floor.



Want to dance the night away in your bridal shoes or walk all day long even after the wedding? It's up to you.

For a glittering evening of wedding waltzes with your beloved, choose a suede sole. Or, for superior suitability for everyday use, choose smooth leather instead. These elegant models, available in white, pearl, nude and beige tones and also in red, gold and silver, flatter any wedding dress. And if you want to keep the magic going after your wedding, you can even carefully dye the satin models to a different colour.



WERNER
KERN
Bridal

also available with street sole

Gala

Satin white
Heel 4.5 cm

comfort



also available with street sole

Felice

Satin white
Heel 4.5 cm

comfort



also available with street sole

July

Satin white
Heel 5.5 cm

NEW



also available with street sole

Felice

Satin white
Heel 3.4 cm

comfort



also available with street sole

Mable

Satin white
Heel 6 cm



also available with street sole

Patty

Satin white
Heel 5.5 cm



also available with street sole

India

Satin white
Heel 6 cm



also available with street sole

Ashley

Satin white
Heel 6 cm

comfort



also available with street sole

July

Satin white
Heel 6.5 cm



also available with street sole



Paris

Satin white
Heel 6 cm



also available with street sole

Francis

Satin white
Heel 6.5 cm



also available with street sole

Betty

Satin white
Heel 6.5 cm



also available with street sole

Mable LS

Satin white
Heel 6 cm



Maite LS

Suede/Patent black
Heel 7 cm



Aurora LS

Patent beige
Heel 8 cm



India LS

Satin white
Heel 6 cm



Paris LS

Satin white
Heel 6 cm



Roslyn LS

Patent red
Heel 8 cm



A FEAST FOR THE SENSES

If you enjoy sauntering instead of simply walking; if you are reluctant to say goodbye to your dance shoes even after the milonga; if you want to enjoy the comfort and style of your favourite shoe even when going out with friends, at the club or at the next cocktail party – then the Nueva Epoca Street models are perfect for you!



When you step out in these shoes, you are making a confident statement, with unmistakable signature design in footwear.

These extravagant models feature street leather soles, transitioning smoothly from the dance floor to the street, where they turn heads with glamorous details, provocative colours and feminine cuts.

While your companions will mainly see your trend-conscious look, you will feel the luxury of excellent handi-craft with every step you take: The softest Mediterranean leather and a perfect fit make the luxury of Nueva Epoca a sensual experience.



Sienna LS

Suede/Ariel black
Heel 7 cm



Shakira LS

Suede/Ariel black
Heel 8 cm



Ornella LS

Stella glitter beige
Heel 7 cm



Simona LS

Nappa black/white
Heel 8 cm



Christina LS

Suede/Ariel black
Heel 7 cm



Cosima LS

Suede red/Ariel black
Heel 7 cm



Valeria LS

Stella glitter beige
Heel 7 cm



Lupe LS

Patent black
Heel 8 cm



Tanja LS

Suede black
Heel 6 cm



Scarlet LS

Chevro/Brocade platin
Heel 6 cm



Martha LS

Suede black
Heel 8 cm



Werner Kern

Ballerinas

Lavorazione Sacchetto



BALLERINAS

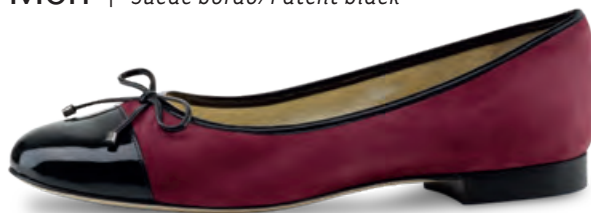
Heel 1.5 cm

We have designed this collection of leather-soled ballerinas for you, taking inspiration from one of our dancing shoes and the Italian sun.

Myke | *Suede/Patent black*



Mori | *Suede bordo/Patent black*



Ada | *Nappa black/red*



Kay | *Brocade black-silver/Patent black*



Mila | *Suede grey/Patent black*



Mimi | *Nappa black/white*



Juno | *Suede marrone/Chevro copper*



Jil | *Stella glitter/Patent black*



Mia | *Nappa beige/black*



Beth | *Nappa beige/marrone*



Luna | *Suede/Nappa black*





Werner Kern

Ballerinas

Lavorazione Sacchetto

Aoi | *Suede fuchsia/Grosgrain black*



Lee | *Velvet/Grosgrain black*



Mag | *Suede grey/Grosgrain black*



Linn | *Brocade black-silver/Grosgrain black*



Ava | *Samt bordo/Grosgrain black*



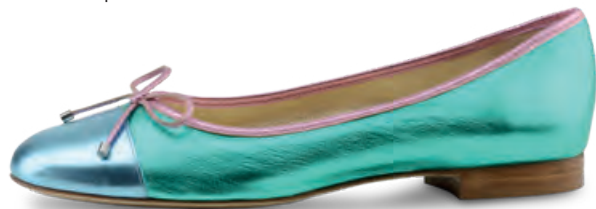
Ive | *Suede blue/Grosgrain black*



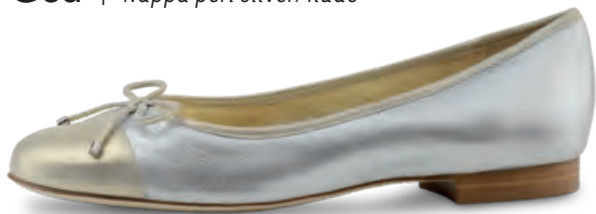
Heel 1.5 cm



Pina | *Chevro lind/bleu/rose*



Gea | *Nappa perl silver/nude*



Sandy | *Brocade/Nappa rose*



Sole | *Brocade/Chevro platin*



Fay | *Brocade/Chevro platin*





Baia | *Suede red/Ariel black*



Fee | *Suede marrone/Chevro copper*



Cassy | *Suede fuchsia/Ariel black*



Jane | *Suede grey/Ariel black*



Dana | *Suede blue/Ariel black*



Juma | *Suede green/Ariel black*



Andy | *Suede viola/Ariel black*



Kyle | *Nappa perl silber/nude*



Minu | *Stella glitter/Patent black*



Heel 1.5 cm

Werner Kern

Ballerinas

Lavorazione Sacchetto

Candy | *Brocade multi/Chevro platin*



Clara | *Nappa black*



Liu | *Nappa blue*





4040 - pureflex for men (sizes 5 - 12)

Nappa/Canvas white
with split PU sole



4045 - pureflex for men (sizes 5 - 12)

Nappa/Velour black, with split PU sole,
with inserted suede leather sole



4050 - pureflex for men (sizes 5 - 12)

Knit grey/black
with split PU sole

NEW



4010 - pureflex for men (sizes 5 - 12)

Knit black/grey/white
with split PU sole



4015 - pureflex for men (sizes 5 - 12)

Knit black/grey/red/white
with split PU sole



4055 - pureflex for men (sizes 5 - 12)

Suede black
with split PU sole

NEW



4030 - pureflex for men (sizes 5 - 12)

Knit blue/ black
with split PU sole



4035 - pureflex for men (sizes 5 - 12)

Knit red/ black
with split PU sole



4020 - pureflex for men (sizes 5 - 12)

Knit black
with split PU sole



also available in half sizes

MEN'S SHOES



Ultralight models

ultralight

The mens models with ultralight heel and non-reinforced toe and heel caps feature superior wearing comfort while being extremely lightweight. The lightweight microfoam heel cushions the wearers steps, reducing impact on the joints and making each shoe light and comfortable.

Sorrent

28063
Suede/Coco black
(Micro Heel)

ultralight



Treviso

28049
Nappa black
(Micro Heel)

ultralight



Prato

28057
Suede/Patent black
(Micro Heel)

ultralight



Treviso

28049
Nappa/Suede blue
(Micro Heel)

ultralight





Firenze

28053

Nappa black/Suede vino
(Micro Heel)

ultralight



Cuneo

28045

Suede grey
(Micro Heel)

ultralight



Trieste

28047

Nappa/Suede black
(Micro Heel)

ultralight



Cuneo

28045

Suede black
(Micro Heel)

ultralight



Carrara

NEW

28066

Nappa barolo/creme

ultralight



Ancona

28044

Suede black
(Micro Heel)

ultralight



Cuneo

28045

Suede denim
(Micro Heel)

ultralight



Modena

28058

Suede black
(Micro Heel)

ultralight



Udine

28023
Nappa cognac



Udine

28023
Nappa black/ Suede grey
(Micro Heel)



Lido

28016
Nappa black
(Micro Heel)



Udine

28023
Nappa/Suede black



Arezzo

28012
Nappa black
(Micro Heel)



Tarento

28024
Deerleather black
(Micro Heel)



Udine

28023
Nappa black/white
(Micro Heel)



Arezzo

28012
Patent black
(Micro Heel)



Lugano

28015
Nappa black



Ravenna

28043
Grattato blue
(Micro Heel)



Anzio

28068
Suede black
(Micro Heel)

NEW



Pesaro

28017
Nappa black
(Micro Heel)



Como

28018
Nappa black
(Micro Heel)
supersoft
handweaving



Carrara LS

28066
Nappa barolo/creme

NEW





Bergamo

28051
Nappa kaduna/creme
(Micro Heel)



Bergamo

28051
Nappa black/white
(Micro Heel)



Forli

28019
Nappa black
Latin Heel 4 cm

latin



Cordoba

Nappa black/white
(Micro Heel)
supersoft handweaving



Bergamo

28051
Nappa/Suede black
(Micro Heel)



Palermo

Nappa/Suede black
Latin Heel 4 cm

latin



Bari

28061
Suede/Nappa black
(Micro Heel)
with removable
footbed



Parma

28065
Suede black/grey
(Micro Heel)
with removable
footbed

NEW



Positano

28062
Nappa black
(Micro Heel)
with removable
footbed

NEW



Bari

28061
Suede/Nappa blue
(Micro Heel)
with removable
footbed



Cortino

28060
Suede black
(Micro Heel)
with removable
footbed



Positano

28062
Nappa mocca/sahara
(Micro Heel)
with removable
footbed



Bari

28061
Suede blue/vino/beige
(Micro Heel)
with removable
footbed



Tadil

Nappa/Canvas sahara
(Micro Heel)



Río Negro

Patent/Suede black
supersoft handweaving





Sucre

*Patent black/Suede red
with split sole*



Belgrano

*Nappa black/bordo
hand brushed*



Monza

*28036
Deerleather black
with split sole*



La Plata

*Nappa white/Patent black
with split sole*



Torino

28011
Nappa black
(Micro Heel)
for wider feet



Milano

28010
Nappa black
(Micro Heel)
for wider feet



Lecce

28040
Patent black
(Micro Heel)
for wider feet



Padua

28059
Nappa black
(Micro Heel)
for wider feet



Bormio

28034
Deerleather black
(Micro Heel)
for wider feet



Remo

28052
Nappa/Suede black
(Micro Heel)
for wider feet



Lucca

28048
Nappa black
(Micro Heel)
with removable
footbed



Capri

28050
Nappa black
(Micro Heel)
for wider feet
with removable
footbed



Perugia

28064
Nappa black
(Micro Heel)
for extra wide feet
with removable
foodbed

NEW



Extra large

Fano

28012
Nappa black
(Micro Heel)
available in
sizes 13½ bis 16



Catania

28067
Nappa black
for narrow feet

NEW



Imola

28011
Nappa black
(Micro Heel)
available in
sizes 13½ bis 16



VISUALIZING CUSTOMER WISHES

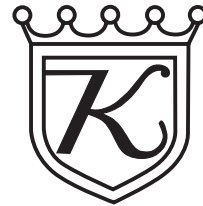


Dance shoes from Werner Kern are impressive for their diversity in form, colour and style. Finding the right dance shoe is an important step when it comes to having a fulfilling dance experience. Advising dancers on-site at a store specialising in these types of shoes is the first step. After individual recommendations and trying on different shoes, the customers desired model has been found.

Retailers can use the model configuration tool to offer their customers individualised dance shoe service.

The virtual configuration tool makes it possible to personalise a large number of models and visualise the personal model for customers.





Werner Kern

FEEL THE DIFFERENCE