

MAINTENANCE TIPS

CHAPIN PUMP SPRAYERS



TASK CLEAN YOUR SPRAYER AFTER EACH USE

TASK PROPERLY STORE YOUR SPRAYER

TASK UNDERSTAND HOW YOUR SPRAYER FUNCTIONS

OBJECTIVE KEEP THE COMPLETE PATH OF TRAVEL CLEAN AND UNOBSTRUCTED FROM THE INSIDE OF THE TANK TO THE TIP OF THE NOZZLE

spray [sprey]

Noun water or other liquid broken up into minute droplets and blown, ejected into, or falling through the air a jet of fine particles of liquid, as medicine, insecticide, paint, perfume, etc., discharged from a tank by pumping for direct surface application

Verb to spray an insecticide on plants

sprayer [spreyer]

Noun a device for discharging such a liquid

seals [gaskets and o-rings]

Noun critical to maintaining pressure

ISSUES RESULTS IN LEAKS, LOSS OF PRESSURE OR FAILURE TO MAINTAIN PRESSURE

PROLONGED EXPOSURE TO CHEMICALS BREAKDOWN SEALS

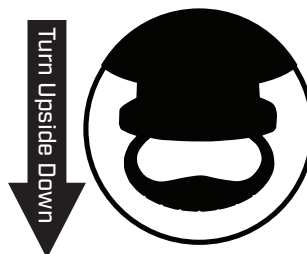


CLEAN AND RINSE x2

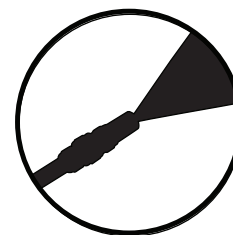
with recommended chemical cleaner

PRESSURIZE

pressurize the empty sprayer and discharge air through the wand and nozzle and release the pressure by the Pressure Relief Valve



with chemical still in tank



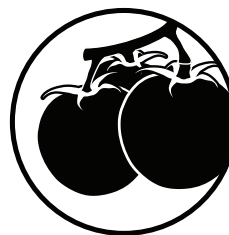
spray until only air comes out

to keep hose, shut-off and nozzle from clogging and contents from drying out

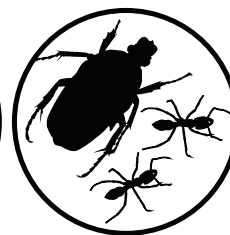
USE SPRAYER FOR ONE PURPOSE



1 for fertilizer



1 for herbicide



1 for pesticide

make sure the sprayer you have purchased is designed for the liquid you are spraying



Chapin International, Inc.
PO Box 549 Batavia, NY
14021-0549 USA
chapinmfg.com ©2022