

CHAPIN

10800

⚠ WARNING ⚠

WARNING: Improper use or failure to follow instructions can result in explosive failure causing serious eye or other injury. For safe use of this product you must read and follow all instructions. Do not leave a pressurized sprayer in the hot sun. Heat can cause pressure build-up resulting in possible explosion. Do not store or leave solution in tank after use. Always wear goggles, gloves, long sleeve shirt, long pants and full foot protection when spraying. Never use any tool to remove pump if there is pressure in sprayer. Never stand with face or body over top of tank when pumping or loosening pump to prevent ejecting pump assembly and/or solution from striking and injuring you. Never pressurize sprayer by any means other than the original pump. Do not attempt to modify this sprayer. Replace parts only with manufacturer's original parts. **Never spray flammable, caustic, acidic, chlorine, bleach or other corrosive solutions or heat, pressure, or gas producing chemicals. Always read and follow chemical manufacturer's instructions before use with this sprayer as some chemicals may be hazardous when used with this sprayer.**

Sk-1154-1

Parts, Piezas, Pièces



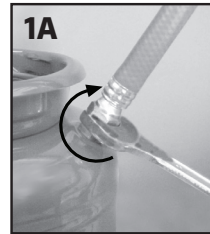
Note: Your particular sprayer may not include all parts pictured above.
Nota: Es posible que este pulverizador en particular no incluya todas las partes que se ilustran arriba.
Remarque: Votre pulvérisateur particulier pourrait ne pas inclure toutes les pièces illustrées plus haut.

Congratulations!

You have just purchased a quality Chapin product.
Register Your Sprayer Online @ www.chapinmfg.com Questions? Do Not Return To Store.
Call us @ **1-800-950-4458** or www.chapinmfg.com

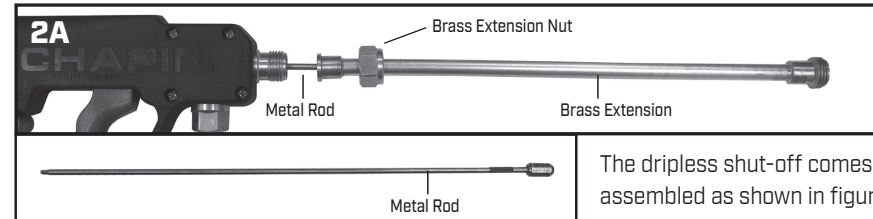
018444R0623

1. Hose to Tank



Attach the hose by screwing the swivel nut clockwise and tightening to 37 in. lbs. Refer to Pre-use check before using.

2. Shut-off/Nozzle Assembly

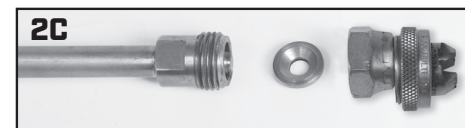


The dripless shut-off comes assembled as shown in figure 2A.

Fan Nozzle



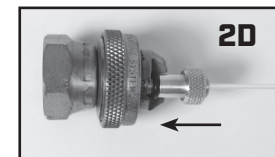
4 Position Nozzle (Not included with all models)



Loosen the retainer cap and rotate nozzle tip to align desired pattern opening with the outlet hole in the nozzle neck. Tighten retainer cap.

Crevice Tool Attachment (for use with 4 position nozzle only)

1. Loosen retaining cap.
2. Align threaded hole in nozzle tip with outlet hole in nozzle neck.
3. Tighten retainer cap.
4. Screw crevice tool into threaded hole in nozzle tip to a snug fit **[Do Not Over Tighten]**.



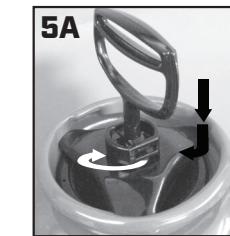
3. Pre-Use Check

- 1) **Do:** Check tightness of hose nut to be sure hose is securely attached to the tank outlet.
- 2) **Do:** Inspect hose for deterioration, cracks, softness, or brittleness. If any of these conditions are found, replace hose before using. Replace with original manufacturer's parts only.
- 3) **Do:** Remove pump (see Filling, Pressurizing and Spraying Instructions), inspect interior and exterior of tank for signs of deterioration of body and bottom. Any sign of deterioration indicates possible tank weakening and could result in explosive bursting under pressure. If any of these signs are found, discard tank immediately and replace. Do not attempt to patch leaks, etc., as this could result in serious injury.
- 4) **Do:** Follow Filling, Pressurizing and Spraying Instructions, except use water only (Pump plunger 10-20 strokes and inspect for leaks).
- 5) **Do:** Direct shut-off away from you and open to make sure discharge is not clogged.
- 6) **Do:** If unit passes this test, release pressure (see Pressure Releasing Instructions), empty tank, and proceed with Filling, Pressurizing and Spraying Instructions.
- 7) **Do:** Inspect all metal parts including the wand, nozzle and fittings for rust, corrosion and pitting. If any of these conditions are found, replace affected part with original manufacturer's part before using.

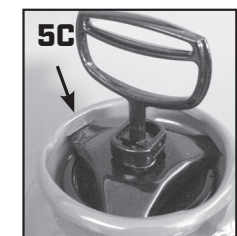
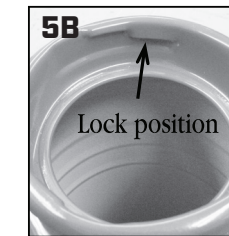
4. Filling

- 1) **Do:** Turn pump handle counterclockwise and remove pump
- 2) **Do:** Prepare spray solution following all directions and safety warnings on chemical label.
- 3) **Do:** Fill tank to no more than the proper gallon marker. Do NOT: overfill to accommodate pump.
- 4) **Do:** Check pump to make sure that no grass or dirt is stuck to barrel. Replace pump in tank and tighten securely.

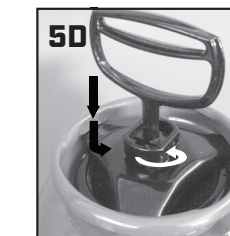
5. Pressurizing and Spraying



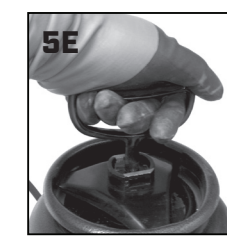
TO LOCK HANDLE: Push handle down to depress coil spring and turn handle 1/4 turn clockwise, then allow handle to raise into lock position.



TO LOCK PUMP: Place pump prongs down into slots in funnel, turn clamp clockwise to furthest position under bottom slot, then turn handle clockwise until tightly locked and sealed in place.



TO UNLOCK PUMP: Turn handle counterclockwise until 3-prong clamp is loose. Then rotate clamp counterclockwise to stop and lift out.



TO RELEASE HANDLE: Push down to depress coil spring and turn handle counterclockwise 1/4 turn, then lift handle.



Pump until you feel resistance.



6. Lock Off

For safety lock-off feature (no-spraying), push trigger forward and rotate locking mechanism into lock-off position as shown in fig. 6A.



7. To Release Pressure

- 1) **Do:** With pump facing away, turn locked handle counterclockwise until air begins to escape. Stop turning handle when you hear air escaping.
- 2) **Do:** Stay away from the sprayer until all air has escaped.

8. Care, Storage and Maintenance

- 1) **Do:** Follow chemical manufacturer's instructions for cleaning. Rinse thoroughly with recommended solvent. Follow Filling, Pressurizing and Spraying Instructions, except pump unit only 8-10 strokes. Be sure that the wand and nozzle are thoroughly rinsed after each use.
- 2) **Do:** Open shut-off and allow recommended solvent to run through discharge assembly.
- 3) **Do:** Release pressure (Follow Pressure Release Instructions), remove pump and empty sprayer.
- 4) **Do:** Store sprayer tank upside down, with pump removed, in a warm dry location.
- 5) **Do:** Periodically oil pump by dropping 10-12 drops of light oil down pump rod through opening in cover.

