



Tactical Support Equipment
www.tserecon.com

Surveillance Detection Course

The Surveillance Detection Course provides students with an overall understanding of basic surveillance tactics; mission development and contingency planning; foot, vehicle and multi-mode surveillance; surveillance detection including surveillance detection route (SDR) development and execution; site survey fundamentals. Additionally, the students receive instruction in the use of urban cover. The Surveillance Detection Course is designed to take the student through the "crawl/walk/run" phases of urban covert surveillance and surveillance detection. Students leave the course with the proper expertise needed to operate in the real world.

Objective: Provide students with the fundamentals of surveillance tactics, techniques and procedures (TTPs); step-by-step doctrinal instruction and practical exercise in team surveillance as well as surveillance detection and construction of foot, mobile and multi-mode SDRs; and an assessment of each student's demonstrated ability to detect surveillance and operate successfully as an individual in a high CI threat environment.



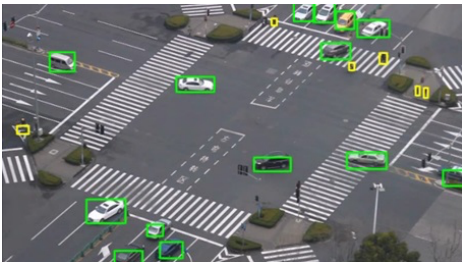
Lesson Assessment: Daily classroom instruction, hands-on assessments & practical exercises are given to demonstrate a mastery of that day's objective. Each day of class includes hands-on demonstrations by the instructor. When the instructor is confident that the objective of the demonstration is understood, the class conducts practical exercises to test their comprehension of the task. These practical exercises include:

Site survey fundamentals; area familiarization; screening and flow; target acquisition and re-acquisition.

Mission planning and contingency development; operational utilization of sites; construction of single mode SDRs; demeanor; surveillance detection; decision points; and defense of cover during initial screening by host nation authorities.

Conducting surveillance as a team; team communications, surveillance terminology and brevity; surveillance team TTPs for foot, vehicle and multi-mode operations in 1-6 person teams; utilization of fixed point surveillance and counter surveillance; and proper employment of polish.

Basics of surveillance detection for foot, vehicle, and multi-mode; construction, execution and timing of SDRs; casing and utilization of operational sites; demeanor; utilization of public transportation; detection of dismounted and mobile surveillance teams; isolation, identification, documentation and reporting of surveillance.



Prerequisites: Students of the Surveillance Detection Course are not required to have any specific knowledge of surveillance detection, urban fixed or mobile applications, or surveillance experience. Mission planning experience is helpful but not necessary to complete or attend the course.

Enrollment is restricted to individuals who are employed as law enforcement agents, investigators, or officers; members of the U.S. military and allied militaries; non-contract employees of the Department of Defense, Department of Homeland Security, and U.S. intelligence agencies. All students

need a willingness to learn and an attitude that fosters a good learning environment for all parties involved.

Materials: Students need note taking materials and cell phones. As the majority of learning is dependent upon having the necessary materials TSE, Inc. provides all equipment necessary to conduct the course. This includes mapping & planning computers, mapping software, digital map data, CCTV equipment, connectors, tools, communication systems,

Tactical Support Equipment Inc.
4039 Barefoot Road
Fayetteville, NC 28306
www.tserecon.com

For More Information
Contact training@tserecon.com

Phone: 800.889.4030
Phone: 910.425.3360
Fax: 910.425.3361



Tactical Support Equipment
www.tserecon.com

Surveillance Detection Course

and expendable supplies. TSE also provides all role-players, offsite training venues (hotels, safe-houses, exploitable structures, etc...), role player vehicles and fuel required to facilitate the course. **The customer must provide transportation, lodging, and per diem for the students. "Transportation" includes shared vehicles for phase II and vehicles for each individual student during phase III.**

Instruction: The instruction given by TSE, Inc. is paramount to the student's successful understanding of the course objectives. A power point presentation is used as a teaching and lecture tool. This presentation progresses in a logical manner starting with an overview of basic surveillance TTPs, then single mode SDR construction followed by multi-mode SDRs. Next the presentations provide the students with several case studies on mobile force protection; common equipment used and force protection surveys. Each period of instruction flows to instructor guided demonstrations & individual/team practical exercises.

Student Activities: Student activities are geared toward a 13-day block of instruction.

Days 1-3, "Crawl Phase": Focus is on classroom instruction on proper area familiarization, site selection and surveys, introduction to SDRs, casing for operational acts, single mode SDR construction, proper demeanor, identification of surveillance, decision points, and an introduction to team surveillance. Practical exercises include single mode SDR construction (foot and mobile routes), Kim's game, and a demeanor/cover test. Day 3 ends with a review and question and answer session. Each day's tasks demonstrate that the students have learned all the objectives of the course so far.

Days 4-7, "Walk Phase": Focuses on practical application in area familiarization, instructor led exercises in team surveillance and introduction/demonstration of multi-mode SDRs. Practical exercises include constructing/executing single mode (foot and mobile) SDRs, conducting surveillance as a team, multi-mode SDR construction. Day 7 consists of the students executing their first multi-mode SDR and traveling to the phase III location.

Days 8-13 "Run Phase": Focus is 100% practical application of area familiarization, operational site selection, multi-mode construction and execution of SDRs as a singleton, identification and reporting of surveillance. Each student will be given operational tasks that require them to construct and execute three to four multi-mode routes during which they must accurately identify and report surveillance to their instructor daily over the next six days of the course. Each student receives a one on one in process review with their instructor to document their progress at the completion of each day's routes. This written record is maintained by TSE in accordance with the contract and shall be made available to the unit as required by the government. The last day ends with a course critique and question and answer session.



Contact: For questions concerning registration, training, and location please contact the Director of Training, Mark Conneway at (910) 425-7232 or 3360, or via email at training@tserecon.com.

Tactical Support Equipment Inc.
4039 Barefoot Road
Fayetteville, NC 28306
www.tserecon.com

For More Information
Contact training@tserecon.com

Phone: 800.889.4030
Phone: 910.425.3360
Fax: 910.425.3361