



Tactical Support Equipment
www.tserecon.com

Multi-Radio Shock Mount

The TSE-RM-4 Radio Shock Mount allows for fast and easy installations of transceivers and their attached power supplies and power adapters.

The TSE-RM-4 Radio Shock Mount can be used in vehicle, aircraft and permanent shelter installation. Can also be use with Transceiver power supplies and Power Adapters from most manufacturers.

Transceivers with attached power supplies mount directly on the TSE-RM-4. Tools are not required to install radio., The TSE-RM-4 Radio Shock Mount is well suited for emergency egress operations from vehicles or static locations.

The TSE-RM-4 Radio Shock Mount's four heavy-duty shock/vibration isolators protect equipment from severe jolts and vibration.



*(Radio & Power Supply Not Included)



Part #: TSE-RM-4

Features

- For use with 117F or 117G Radios
- Also, works with PRC-150 and PSC-5x Radios
- Protects equipment from shock & vibration
- No tools required to install equipment
- Allows for emergency egress
- Integrated Ground and Bonding Points
- Adaptable to Vehicles, Boats, Aircraft or Static Locations
- Integrated Locking Cable to Secure Equipment
- 3-Year Limited Warranty

Tactical Support Equipment Inc.
4039 Barefoot Road
Fayetteville, NC 28306
www.tserecon.com

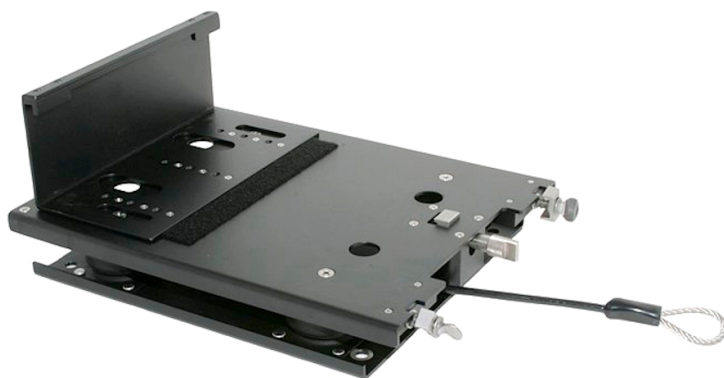
For More Information
Contact sales@tserecon.com

Phone: 800.889.4030
Phone: 910.425.3360
Fax: 910.425.3361



Specifications subject to change without notice, the information in this document does not form part of any contract or quote.

Specifications (TSE-RM-4)	
Material	Aluminum
Finish	Powder Coated
Latching	Fine-Thread Rescinding, Quick-Release Thumbscrew for 117G and Dual Quick-Release Thumbscrews with Latches for Larger Radios with adjustable rear mounting bracket
Transceiver Mounting Compatibility	AN/PRC-117F, AN/PRC-117G, AN/PRC-150, AN/PSC-5 Series
Power Supply/Adapter Compatibility	Can be used with Transceiver Power Supplies and Power Adapters from most manufacturers.
Hardware	Stainless Steel
Mounting	8ea Mounting Holes 3/8" with Bonding Surfaces
Size	15"L x 10.5"W x 5.9"H
Weight	7.43 lbs.
Operating Temperature	-55° C to +150° C (-67° F to +302° F)
Storage Temperature	-55° C to +150° C (-67° F to +302° F)



Tactical Support Equipment Inc.
 4039 Barefoot Road
 Fayetteville, NC 28306
www.tserecon.com

For More Information
 Contact sales@tserecon.com

Phone: 800.889.4030
Phone: 910.425.3360
Fax: 910.425.3361



Specifications subject to change without notice, the information in this document does not form part of any contract or quote.