



Tactical Support Equipment
www.tserecon.com

Elevated Multi-Band Antenna and Mast (4 Radio with HF)

The **TSE-ANT-EMB-MST-4HF** is a tactical 4-Radio, single-port antenna with Mast that covers 30-88 MHz, 225-450 MHz and 1200-2600 MHz. It is a one piece tactical antenna designed for use with all modern in service radios covering the band from 30-88 and 225-450 MHz. The extra port covering the modern SRW, ANW2, TSM-X, Wave Relay and Silvus waveforms allows for a full network centric system. A separate HF Wire Dipole Antenna covers the 1.6-30 MHz band. Simultaneous transmit and receive.

The modern design gives improved gain and radiation characteristics across the full frequency range. For urgent use or stealth requirements, the antenna can also be sat on the ground with only the tripod support, without the mast.

Includes a Triplexer to allow operators to combine multiple carrier frequencies onto a single run of coax, resulting in reduced cost, lower wind-loads and reduced weight. The antenna is the easiest and quickest antenna of this type to mount. All the parts needed to erect a high gain tactical antenna are supplied in the transit bag.



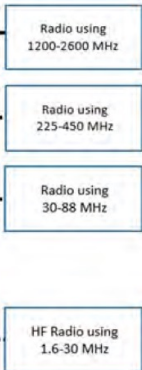
Four radio communication ports from one elevated antenna:

- 1 x HF (1.6-30 MHz)
- 1 x VHF (30-88 MHz)
- 1 x UHF (225-450 MHz)
- 1 x L-S Band (1200-2600 MHz)

* Simultaneous transmit or receive

Lower guy ropes replaced with HF wire antenna

Triplexer included with ETAMS



Drawing not to scale



Antenna and mast kit supplied in one compact carrying bag



Antennas and mast kit contents

Part #: TSE-ANT-EMB-MST-4HF

Features

- Triplexer to reduce Cabling and Weight
- Easy to Erect in less than 10 mins
- 1-Year Warranty
- Includes HF Wire Dipole Antenna
- Replaces the COM201B & OE-254
- One antenna handles four Bands

Tactical Support Equipment Inc.
4039 Barefoot Road
Fayetteville, NC 28306
www.tserecon.com

For More Information
Contact sales@tserecon.com

Phone: 800.889.4030
Phone: 910.425.3360
Fax: 910.425.3361

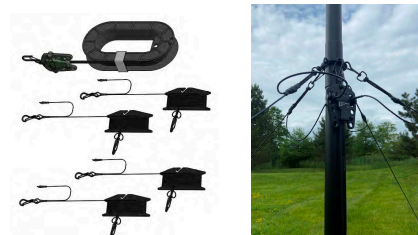
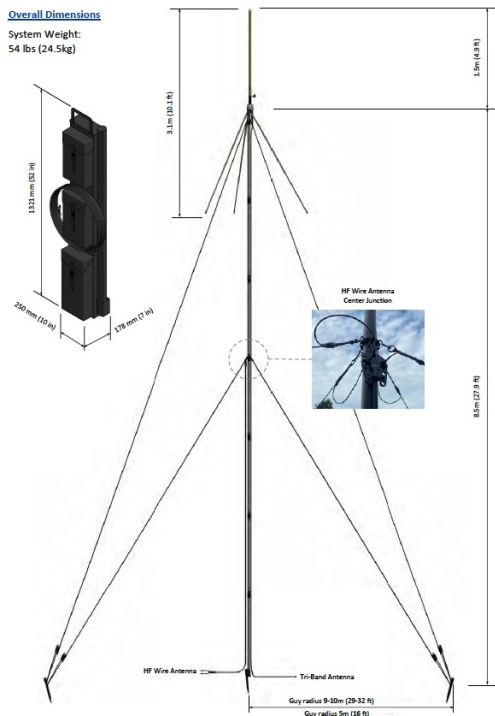
Specifications (TSE-ANT-EMB-MST-4HF):

Antennas and Tripod Assembly

Frequency Range:	VHF: 30-88 MHz	UHF: 225-450 MHz	L-S Band: 1200-2600 MHz	HF: 1.6-30 MHz
VSWR:	VHF: < 3.5	UHF: < 3.0	L-S Band: < 3.0	HF: < 3.5
Nominal Impedance:	50Ω			300Ω
Power Rating:	VHF: 75W	UHF: 75W	L-S Band: 50W	HF: 400W
Radiation Pattern:	Omnidirectional within ±2dB			
Polarization:	Vertical			Horizontal
Connector:	N Type Female			2x Hook Terminals
Design:	VHF monopole, UHF dipole, L-S band dipole elements. Radiating elements completely enclosed in epoxy/fiberglass laminate. Metal parts are brass, aluminum and stainless steel.			Crossed Dipole Wire Antenna
Height	10ft. (3.1m) – Antenna + Tripod			
Weight	Whip: 3.1 lbs. (1.4 kg), Tripod: 8.3 lbs. (3.8 kg)			3.5lbs (1.6 kg)
Temperature Range	-55°C to +71°C (-67°F to +160°F)			

Overall Dimensions

System Weight:
54 lbs (24.5kg)

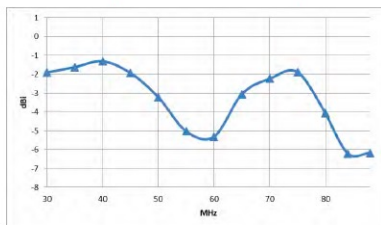


Triplexer
(Combines three radio/frequency bands into a single antenna port)

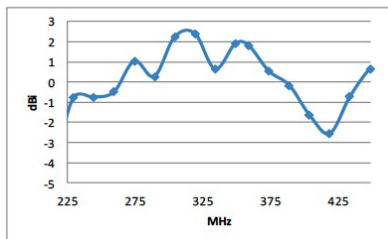
Mast

Mast Sections:	Fiberglass tube outside diameter Ø1.75in (Ø44.5mm), 52in (132cm) long. Green, Tan or Black paint finish
Guys:	4 x Upper and 4 x Middle, 1/8 in braided line on winder with adjustable lock/snap hooks each end
Guy Pegs:	5 pcs powder coated steel
Base Support:	Baseplate
Wind Speed (Max):	60 mph (96 km/h), including gust
Weight:	32.7 lbs. (14.9 kg)
Temperature Range	-55°C to +55°C (-67°F to +131°F)

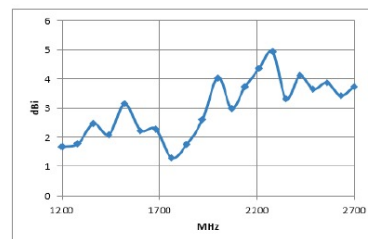
VHF gain, dB rel. 1/4 wave resonant whip.



UHF gain, dBi



L-S band gain, dBi



Tactical Support Equipment Inc.
4039 Barefoot Road
Fayetteville, NC 28306
www.tserecon.com

For More Information
Contact sales@tserecon.com

Phone: 800.889.4030
Phone: 910.425.3360
Fax: 910.425.3361