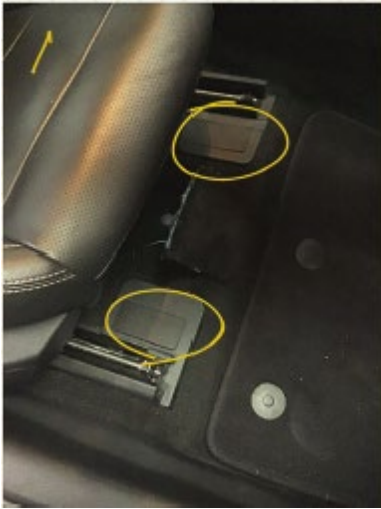


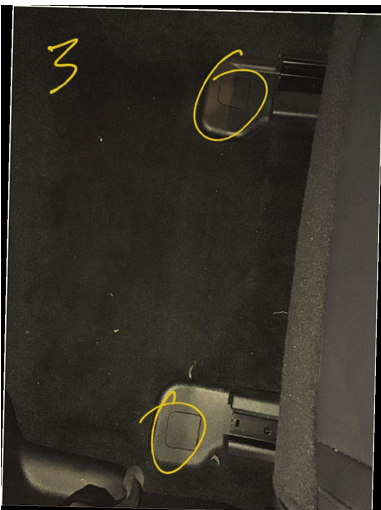
Factory Seat Removal

Before you begin, make sure you set aside enough time to complete the work. This is a more involved process due to the complexity of the OEM seats and associated systems. If you are not confident of your ability to complete the work shown here to a safe standard, please pass the work to a qualified mechanic.

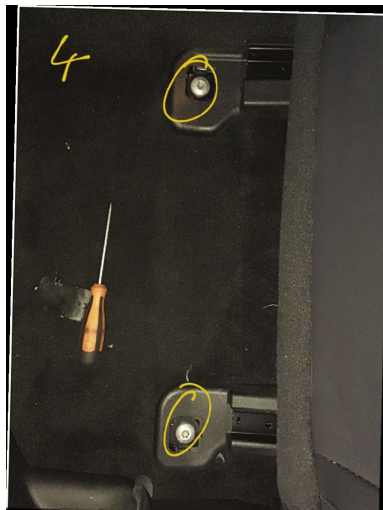
- Seat Removal
- Remove Battery
- Move seat to the rear as far as possible
- Remove plastic covers to reveal bolts



- Undo and remove Front T50 Bolts

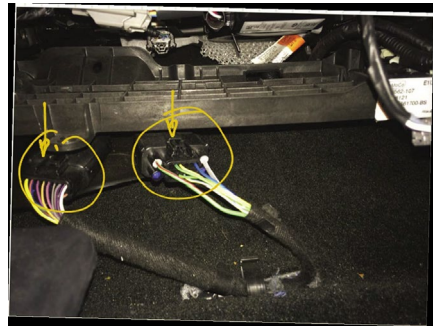


- Move seat to the front as far as possible
- Remove plastic covers to reveal bolts



- Undo and remove T50 Bolts

- Put seat to central position
- Remove Plugs for seat wiring



- Remove seat from vehicle
- Repeat for passenger seat

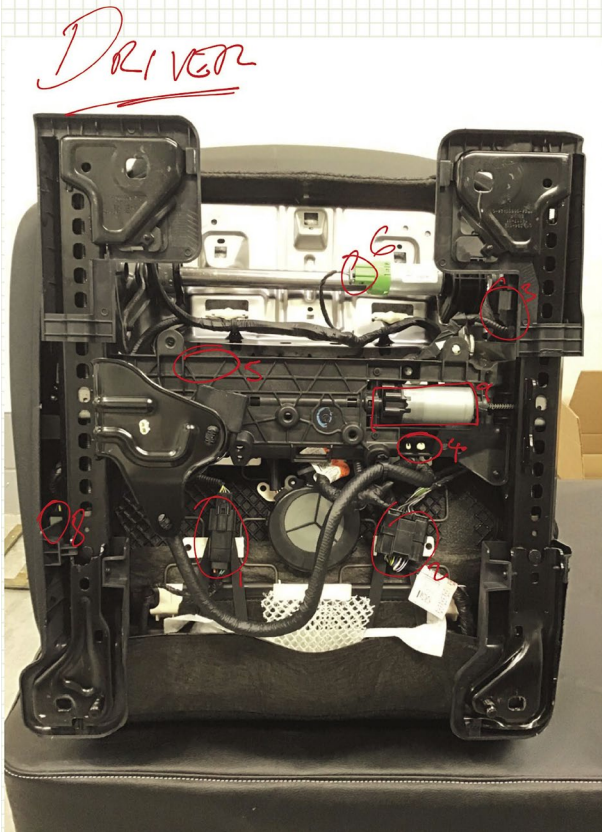
Components Required from Factory Seats

To ensure the airbag light does not activate, there are some parts that need to be transferred over from the OEM seats. See further on for details on storing the components.

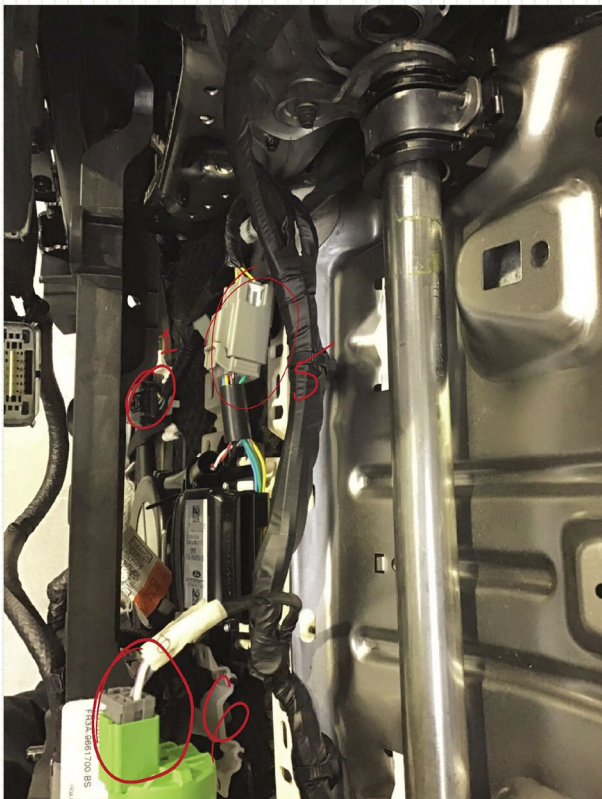
These are:

- Wiring Harness
- Airbag deployment sensor
- Under Seat Control Module
- Seat Belt Buckle & Wires
- ***For passenger side ONLY –***
- ***Occupancy Sensor***
- ***Control Box***

Driver Seat

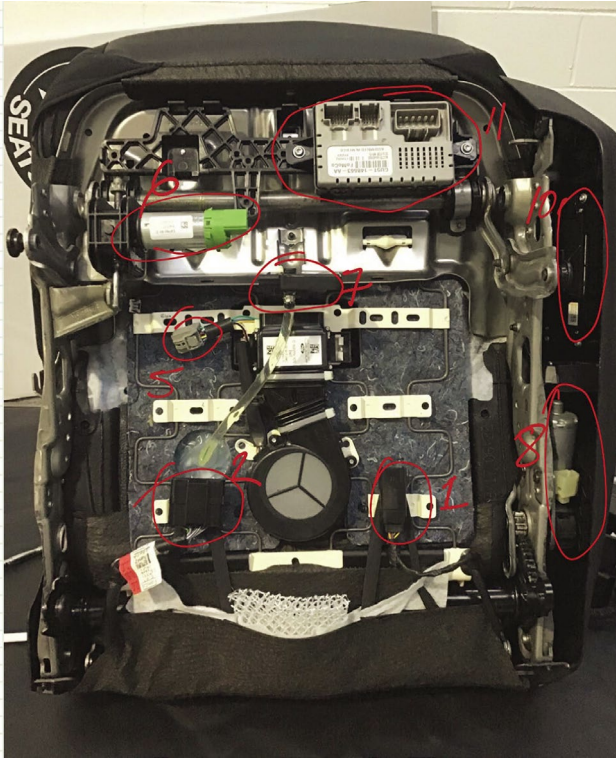


1. Airbag Plug
2. Seat Heater
3. Airbag Deployment Sensor
4. (Behind) S/B plug
5. (Behind) Blower Plug
6. Tilt Motor
7. Occupancy Weight Sensor (Pass)
8. Height Motor
9. Slide Motor
10. Switches
11. Control Box (Pass)



Passenger Seat

Shown with Runners & Harness Removed



- 10. Switches
- 11. Control Box

- Mark each Connection with Masking Tape and a Pen
- Carefully remove the wiring harness from both seats. Take pictures as you go
- From passenger seat also remove control module (x2 T20 Bolts) & Carefully remove Occupancy Weight Sensor taking care to not puncture the bag or disconnect the pipe

Corbeau Seat Prep



- Seat laid on its back
- Remove 4 x M8 (6mm) Hex Bolts



- Fit Runners as Shown
- Handle MUST Point Down
- Note orientation of runners and the release spring

Subframe Fitment

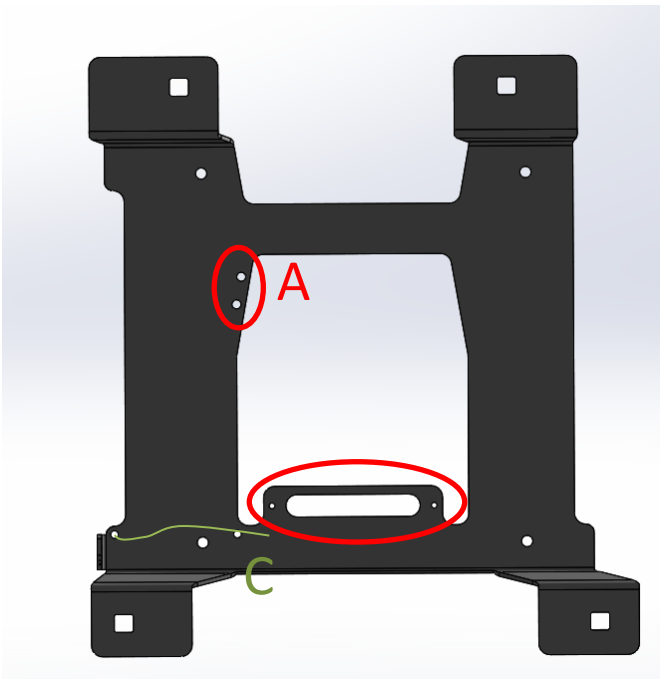


- Fit as Shown in Image
- Torque Bolts 30nm

NOTE: Subframe may differ from one shown



- Fit Seat Belt Buckle as Shown
- T50 Bolt
- 50nm (M10)



- A – Fit Airbag Deployment Sensor here (see item 3 in image on previous page) using hardware from OEM seat
- B – Fit control box here (see item 11 in image on previous page) using hardware from OEM Seat
- C – Route wire from seatbelt buckle as shown, using OEM Clips

Neatly and carefully arrange the Occupancy Sensor from the passenger seat underneath the new seat, securing with cable ties. Take care not to disconnect the tube from the bag, or pierce the bag.

Secure any remaining wires from the OEM loom out of the way of snagging underneath the seat.

Warning: Airbag systems can cause serious injury or death if misused. Use extreme caution when working with airbag systems.

To install the replacement seats, first connect the wiring underneath the seat, then use the OEM bolts to fix the subframe in the OEM positions. Torque fasteners to 30Nm.

Neatly Arrange the Wiring to the Subframe with the OEM Clips where possible and cable tie