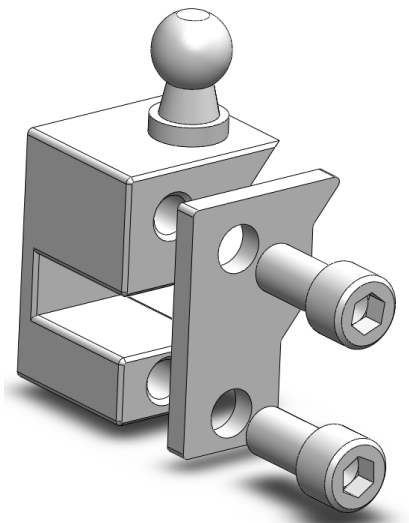




STEEEDA

Billet Transmission Shifter Bracket

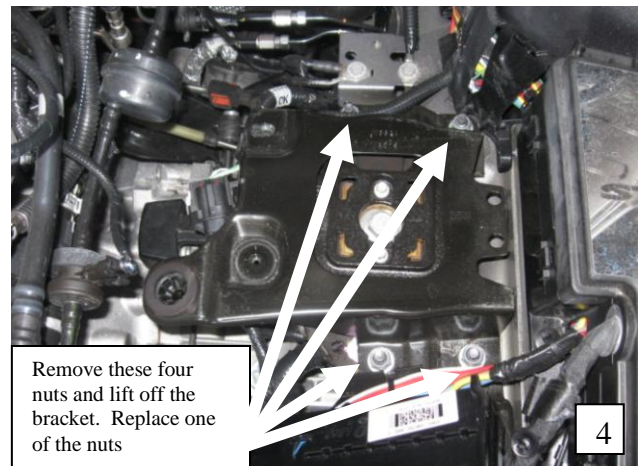
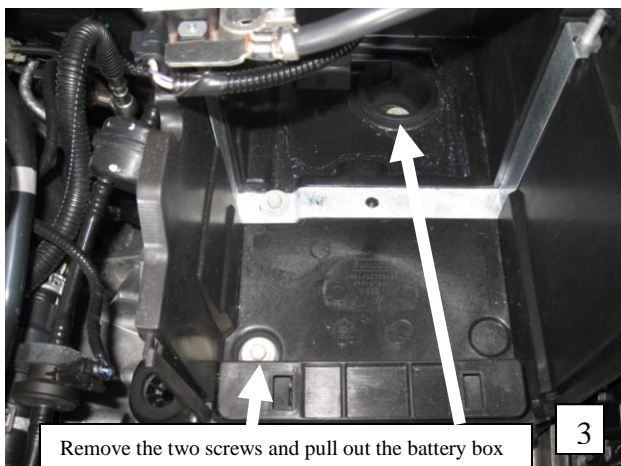
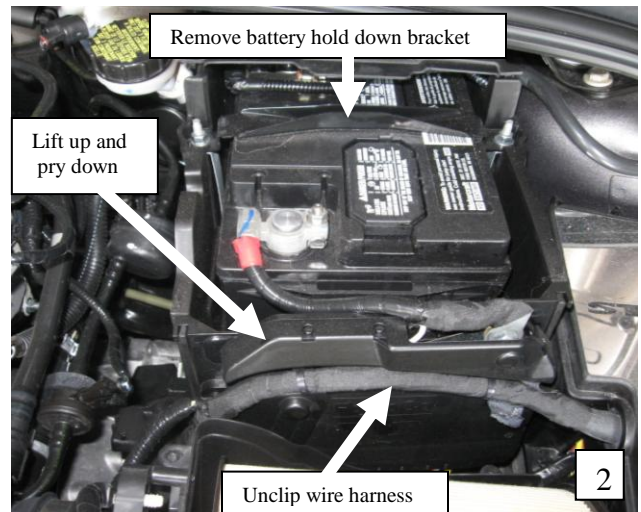
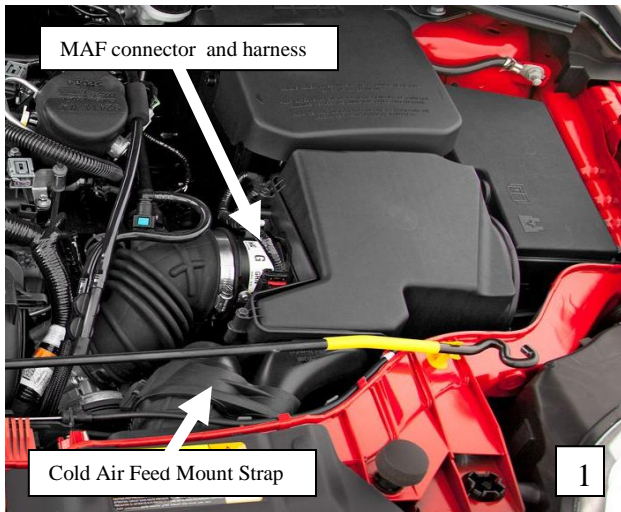
For: 2012+ Ford Focus
Installation Instructions For Kit #555-7237



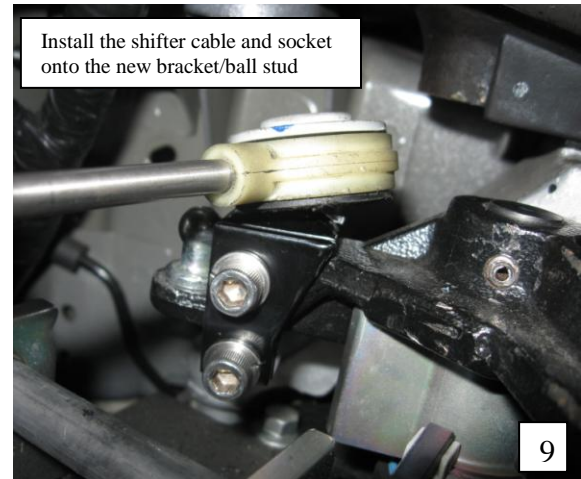
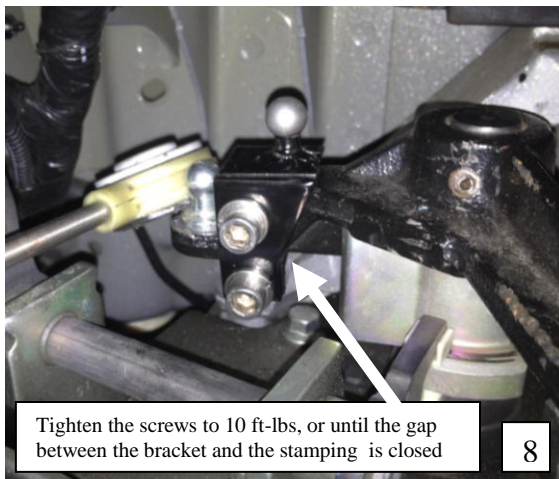
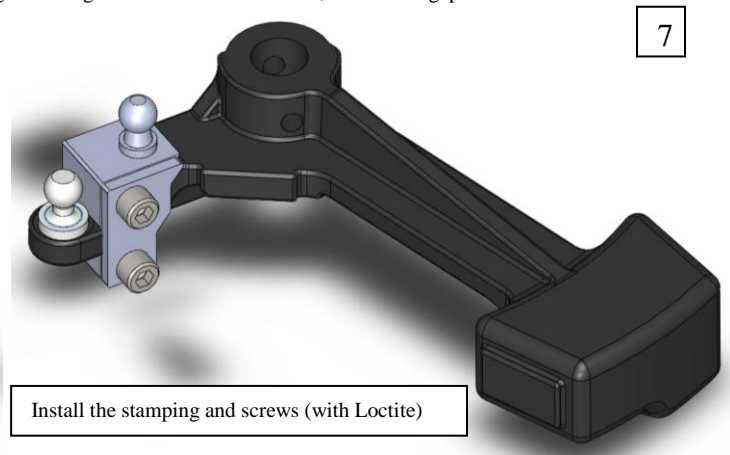
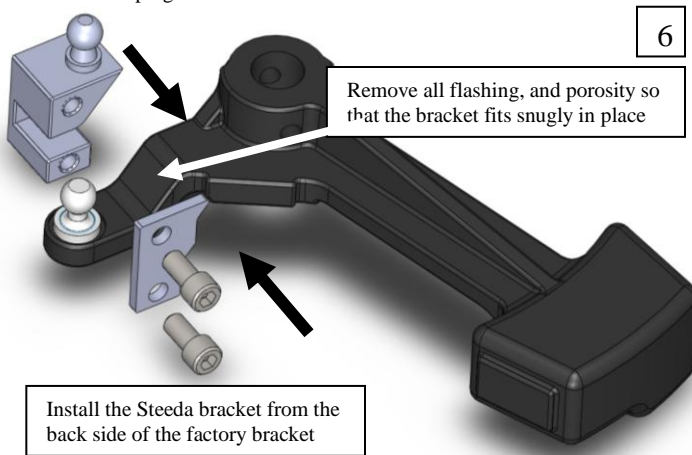
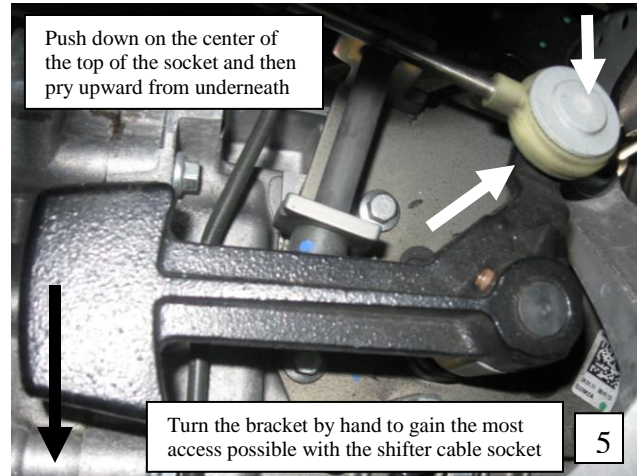
- Due to tight fitment this part is rather difficult to replace if you are not familiar with Ford FWD car shifters. A qualified technician should be used if you are not confident after carefully reading through the instructions.
- Refer to a service manual for fastener torque specifications, and also general guidance.

Installation of the Steeda Billet Transmission Shifter Bracket

1. Place the car on a level surface and apply the parking brake. Shift the car into Neutral.
2. Open the hood and carefully lift off the plastic battery cover. See figure 1. Disconnect the positive battery cable, at the battery.
3. Remove the factory airbox assembly (see figure 1) by:
 - a. Loosen the hose clamp securing the intake tube to the mass air flow pipe.
 - b. Release the red locking tab, and disconnect the electrical connector for the mass air flow sensor. Unclip the sensor's wire harness from the airbox. See figure 1.
 - c. Unclip the rubber strap securing the cold air feed tubes from their mount at the cold air feed coming from the grille. See figure 1.
 - d. Gently pull up on the airbox and dislodge the rubber grommets (beneath the airbox) from their locating holes on the chassis. Lift out the entire assembly, with cold air feed tubes attached, in one piece.
4. Carefully unclip the wire harness clipped to the front of the battery box. Now lift up/unclip the front battery box cover/Electrical Distribution Center and gently pry the cover down to allow the battery to slide forward/out. See figure 2.
5. Remove the battery hold down bracket by removing the two 10mm nuts securing it. See figure 2. Slide the battery forward and disconnect the negative battery cable. Remove the battery from the car.



6. Remove the two 10mm head screws securing the battery box to the chassis. See figure 3. Carefully pull the entire battery box out of the car.
7. Remove the four Nylon lock nuts securing the motor mount cover to the motor mount. See figure 4. Carefully unclip the wire harness attached to the cover, and set the cover aside.
8. Replace one of the nuts to hold the motor mount in place for the mean time.
9. Shift the transmission input bracket so that the shifter cable socket is easiest to access. This can be done by turning the bracket by hand. See figure 5.
10. **!!!This is a delicate/tricky step!!!** Take a small center punch, or Phillips head screwdriver, and firmly press down on the rubber center portion on top of the shifter cable socket. See figure 5. This will release the internal clip securing the socket to its ball stud. With your other hand, using a small forked prying tool (or a large flat tip screwdriver), pop the socket/cable off the ball stud by prying up between the bottom of the socket and the bracket. **DO NOT** force the socket off, **IF** the internal clip is fully released, the socket will come off with relatively little force
11. **Due to the nature of the part there may be considerable flashing or heavy porosity that needs to be removed/smoothed on the factory trans bracket.** A file or coarse sand paper should be used to ensure the Steeda bracket fits properly. See figure 6.
12. Install the Steeda bracket as seen in figures 6 and 7. The bracket should be a snug fit, however if the bolt holes do not line up upon installation the factory bracket should be smoothed further.
13. Apply a small amount of Loctite to the threads of the two provided socket head Allen screws.
14. Install the stamping and the two socket head screws over the bracket as seen in figure 7. Tighten the screws to 10ft-lbs, or until the gap between the bracket and



stamping is closed. See figure 8. Install the shifter cable socket over the new ball stud. It must snap into place. See figure 9. Ensure it is securely clipped into place by gently trying to pull it off the ball stud. It should not pull off.

15. Complete installation by reinstalling all of the factory parts in reverse order of removal.
Note: prior to reinstalling the battery and airbox, shift the transmission through all gears (with the engine off) to ensure there is no binding or problems with the shifter assembly.
16. You are done. Test drive the car to verify shifter function.

Thank you for choosing Steeda Autosports! We truly appreciate your commitment to U.S manufactured products. If you have any questions or comments please call us at 954-960-0774 or email GoFast@Steeda.com