

PINtooth Installation Manual

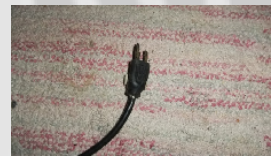
Version 1.1 May 04, 2014



1. Warnings and Agreements

Welcome! The Jersey Jack Pinball Wizard of Oz PINtooth kit has been designed for simplicity of installation! As with any Pinball Machine modification and add on kit there is a required level of expertise for the installation. If you are not proficient in basic pinball parts installation we recommend having our kit installed by someone who is proficient with the basics of pinball repair. Pinnovators requires our kit be installed by an experienced Pinball service technician with basic electrical skills. As with any electrical piece of equipment a danger does exist and you must agree to not hold Pinnovators responsible for any injury, damages, etc. before continuing.

Power Cord: ALWAYS UNPLUG THE POWER CORD for safety when working on your pinball machine!



2. What's included in the PINtooth Kit

- 1 PINtooth Module
- 1 USB to Mini USB Cable
- 1 3.5MM Male to 3.5mm Male cable



Requirements:

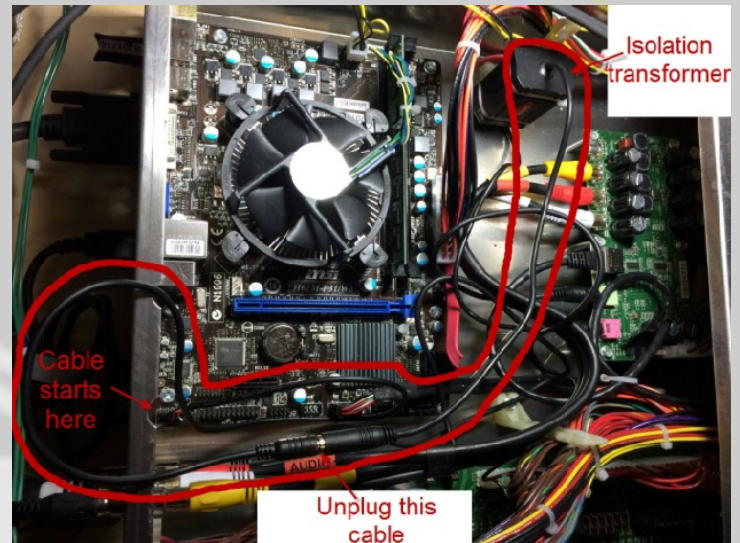
You will not need any tools to do this installation.

This manual was written using a newer production WOZ. The PINtooth was tested on the same machine. Installation will vary slightly on an older model.

3. Installation

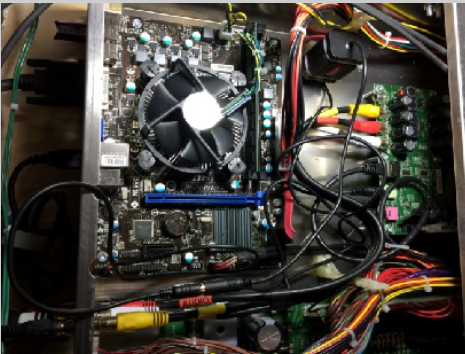
Unpack the PINtooth kit. Everything is included in the shipping box and bag.

Remove the WOZ lockdown bar and playfield glass. Lift up and slide the playfield out into the service position.



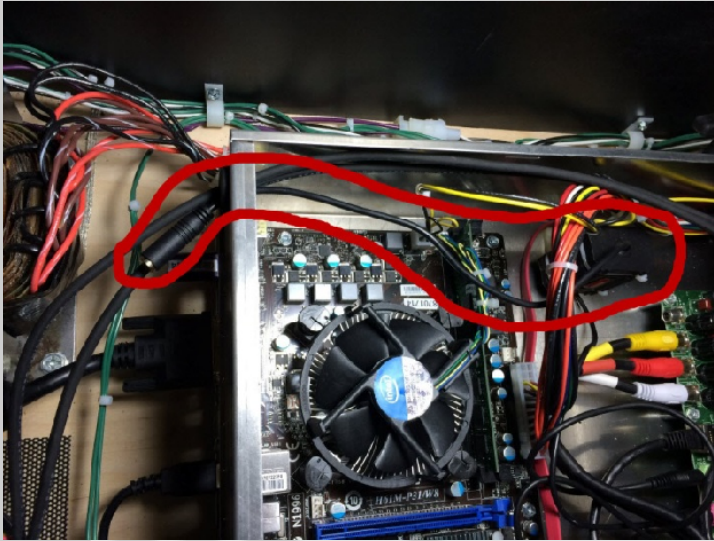
Technical Details (If you want to know more!) Audio comes out of the CPU board and goes through a 3.5mm male connector. This connector mates with the 3.5mm female connector that is on the cable going to the isolation transformer. The other end of the isolation transformer delivers the audio to the Amplifier board.

Remove the cover from the I/O Control box. Slide the cover back enough to expose the Amplifier card.

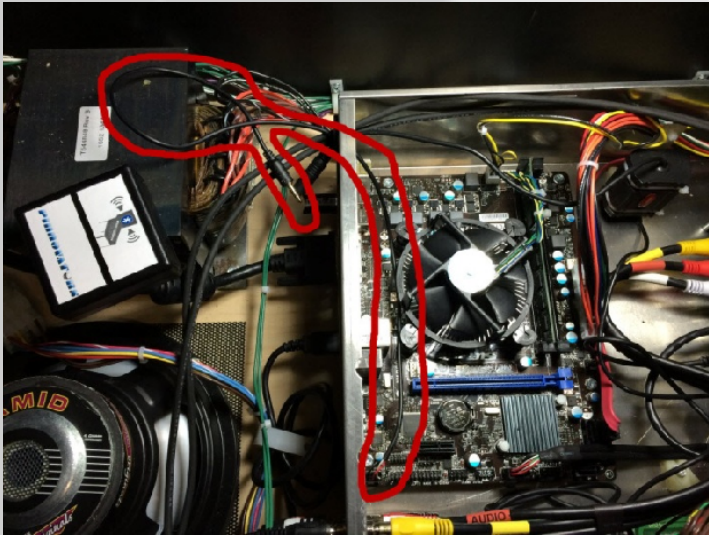


Unplug the 3.5mm cable that goes to the isolation transformer.

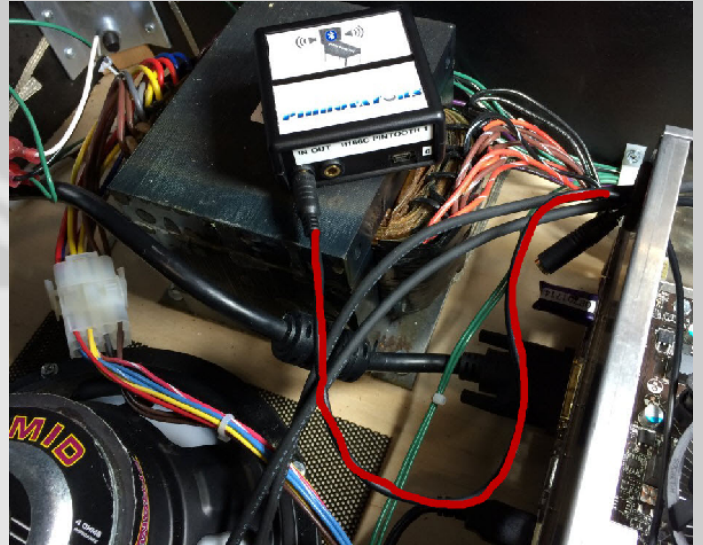
Route the wire going to the isolation transformer through the grommet on the control box. Audio will be coming back in on this cable.



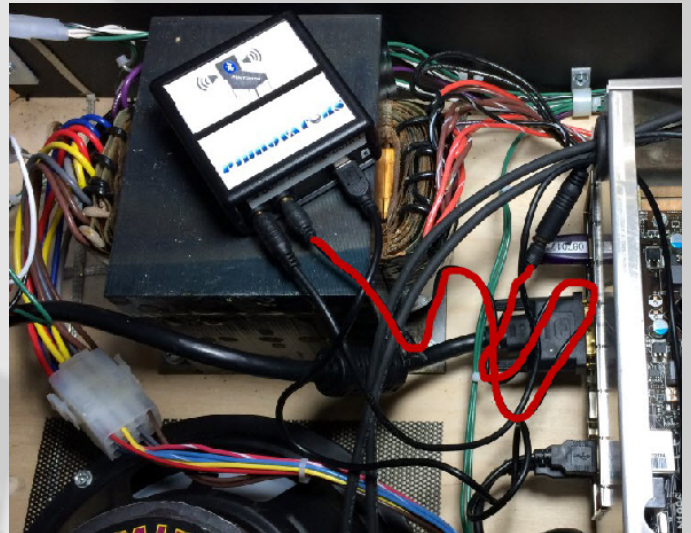
Route the wire coming from the CPU board out the grommet too. Make sure the wire does not come in contact with the cooling fan on the CPU board!



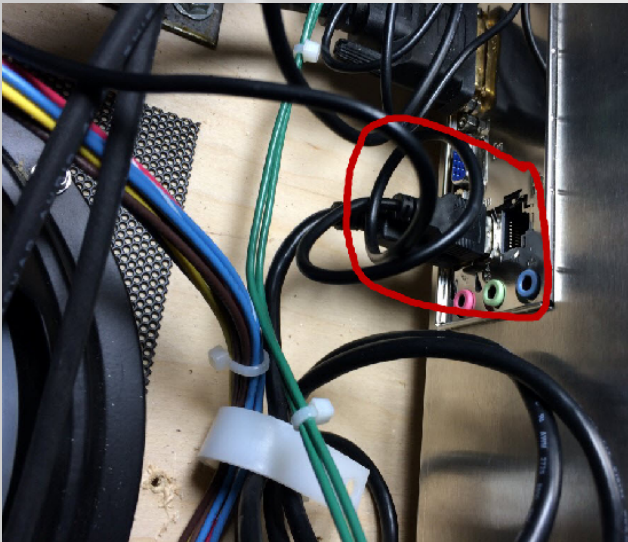
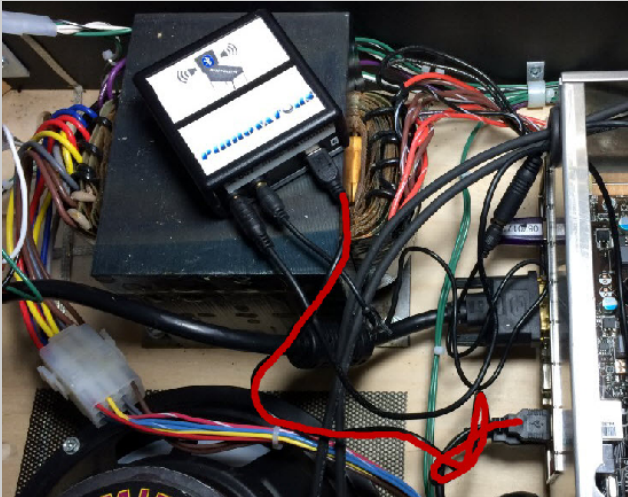
Place the PINtooth module on the main power transformer temporarily. Plug the cable from the CPU board into the jack labeled "IN" on the PINtooth module.



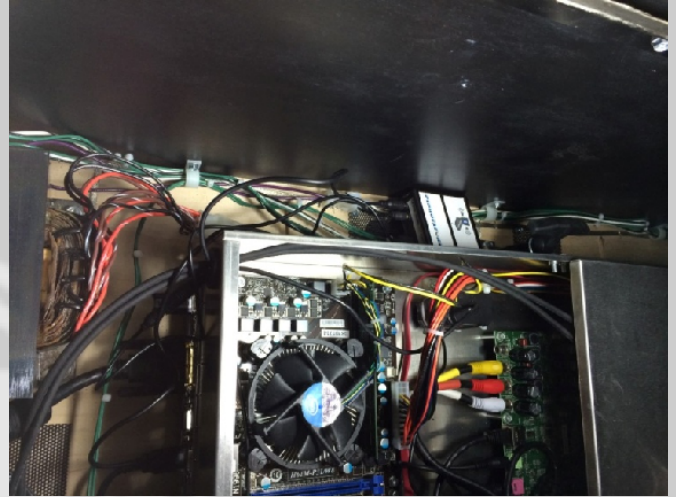
Using the 3.5mm to 3.5mm short included kit cable; connect from the "Out" jack of the PINtooth to the 3.5mm female connector that goes to the isolation transformer.



Using the included USB to mini USB cable:
Plug the small end of the cable into the connector on the front of the PINtooth.
Connect the other end to an available USB connector on the CPU board.



Place the PINtooth module on the side of the I/O control box as shown.



Reassembly

Reassemble the I/O Control box cover.
Reinstall the playfield.
Plug the machine back in and power up.

Final Checkout

Please read this entire section first so you know what to expect.

Power up the system. When the system starts up, you will hear the PINtooth module play a short tune in the speakers. If not then review your setup. Feel free to ask us for help!

You will now have three minutes to “Pair” your BT player to the PINtooth. (Pinnovators uses iPhone as our audio player.) When you “pair” the PINtooth, your audio player asks for a 4 digit code, use “0000”.

Verify that you can now play your music through the PINtooth. The PINtooth will automatically switch over to audio from your player when you start to play. When you pause or stop the music, the PINtooth will automatically switch back to the regular audio on the machine!

Verify the game audio is working properly by playing a game.

When you shut down your pinball machine, the PINtooth will be powered down also. It will remember the last device it paired with so there is no need to pair it again unless you tell your player to “forget this device”.

If you want to allow someone else to play their music, simply “turn off” your Bluetooth. The other person will have three minutes to pair their player with the PINtooth. If the 3 minutes times out, the system will have to be power cycled to start the Pairing process again.

The PINtooth kit is the perfect complement to your Pinnovators JJP Sound system.

Please check out our WOZWoofer upgrade kit too!

Thank your purchase of our product! We hope you get many years of service from it.

The Pinnovators Team.

Please visit our website at www.Pinnovators.com